

Product datasheet for **RG207065**

MIER2 (NM_017550) Human Tagged ORF Clone

Product data:

Product Type:	Expression Plasmids
Product Name:	MIER2 (NM_017550) Human Tagged ORF Clone
Tag:	TurboGFP
Symbol:	MIER2
Synonyms:	KIAA1193; Mi-er2
Mammalian Cell Selection:	Neomycin
Vector:	pCMV6-AC-GFP (PS100010)
E. coli Selection:	Ampicillin (100 ug/mL)



[View online »](#)

ORF Nucleotide Sequence:

>RG207065 representing NM_017550
 Red=Cloning site Blue=ORF Green=Tags(s)

TTTTGTAATACGACTCACTATAGGGCGGCCGGGAATTCGTCGACTGGATCCGGTACCGAGGAGATCTGCC
 GCC**CGGATCGCC**

ATGGCGGAGGCCTCCTCGCTGGGGAGGCAGAGTCTCGCTGGTCTCCTGCCTCGAGCACAGCCTGTGCC
 CAGGGGAGCCGGCTTGACAGACAACAGCAGTGGTGTCCATGGGCTCTGGAGACCATCAGTTCAACCTCGC
 AGAGATCCTGTACAGAACTACAGTGTAGGGGGAGTGCAGGAGGCCTCGAGGTGCCAGACAAGCCC
 AAGGAGGAGCTGGAGAAGGACTTCATCTCCAGAGCAACGACATGCCCTTGATGAGCTGCTTGCCTCT
 ATGGCTACGAGGCGTCAGACCCATTTCAGACCGGAGAGTGGGGTGGTACGTTGCCCCGAACCTCCC
 AGACATGACCCTGGACAAAGAACAATAGCGAAGGATTTGCTTTCAGGGGAAGAAGGAAGAGACGCAA
 TCATCTGCTGACGACCTACCCCGTCCGTACCTCCCACGAGGCCTCCGACCTCTCCCTAACCGGAGTG
 GATCTCGTTTCTGGCTGATGAAGACAGAGAGCCTGGCTCTTCTGCCTCCTCCGACACCGAGGAGACTC
 TCTTCTGCCAACAAATGTAAGAAGGAGATCATGGTGGGACCTCAGTTCCAAGCTGACCTCAGCAACCTG
 CACTTGAACCGGCACTGTGAGAAGATCTACGAGAACGAAGACCAGCTGCTCTGGGACCCAGCGTCTCC
 CTGAGAGGGAGGTGGAGGAGTTCCTGTACAGGGCGGTGAAGCGCGGTGGACAGGATGGCCGGGCTCA
 GCTCCCAGAGGGAGAAGCCGTGAAAGACAGTGAGCAGGCGCTGTACGAGTTGGTGAATGCAACTCAAT
 GTGGAGGAGGCCCTGCGAAGGCTGCGGTTCAACGTGAAGTGATCCGAGATGGGCTCTGTGCTTGGAGTG
 AAGAGGAGTGCAGGAACCTTGGACACGGCTCCGTGTGCATGGAAAGAACTTTCACCTGATCCAGGCCAA
 CAAGGTGCGCACACGGTCACTGGGCGAGTGTGTCGAGTACTACTACCTGTGGAAGAAGTCGGAGCGCTAC
 GACTACTTCGCCACGACAGCGCGCTGGCCGGAGGAAGTACGTCCTCCGGAACACGGACGCAGACC
 AGGACTGGATGGCAGCGACCCCGATGGCCCGGCGTCCGCGCCCGGAGCAAGACACCTGACTGGGAT
 GCGCACAGATCCACTGAGCGTGGATGGCAGCGCGGTGGTCTCGATGAGCCCGGAGTGGCCCTGATGGA
 CTCCCGTCTCGAGCCAGGCGGTGTTCTTCCAGCAGCTGGATGAGTCCCCCGCTGTACCCCTGTCCC
 ATCGGCCCCAGCCCTGGCCGACCCAGCCTCATACCAGCCAGCTGCACTGCTCCGGAGCCAGACGCCAG
 CCCAAGGCTGGCCGTGGACTTCGCCCTGCCAAGGAGCTGCCCTCATCTCCAGCCATGTGGACCTCAGC
 GGGGATCCGGAGGAGACTGTGGCCCGACAGGTGGCTTTGTGGTACCAGGTTTGGACTCATCGGCA
 TTGGGGACGTGAACCCCTTCTGGCCGCCACCCACGTGCCCGCCCGGGCTACACTCGGAGCCCT
 GTCACACTGTAACGTGATGACCTGC

ACGCGTACGCGGCCGCTCGAG - GFP Tag - GTTTAA

Protein Sequence:

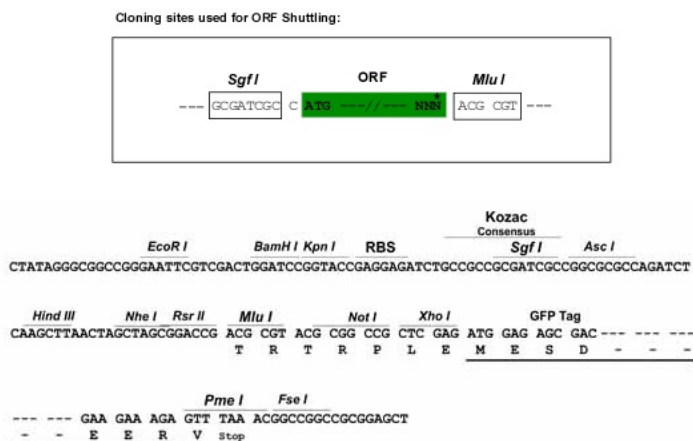
>RG207065 representing NM_017550
 Red=Cloning site Green=Tags(s)

MAEASSLGRQSPRVVSCLEHSLCPGEPGLQTTAVVSMGSDHQFNLAELISQNYSVRGECEEASRCPDKP
 KEELEKDFISQSNMPFDELLALYGEASDPI SDRESEGGDVAPNLPDMLDKEQIAKDLLSGEEEEETQ
 SSADDLTPSVTSHEASDLFPNRSRFLADEDREPGSSASSDTEEDSLPANKCKKEIMVGPQFQADLSNL
 HLNHRHCEKIYENEDQLLWDPVLPEREVEEFLYRAVKRRWHEMAGPQLPEGEAVKDSEQALYELVKCNFN
 VEEALRRLRFNVKVI RDGLCAWSEEECRNFEHGFVHGKFNHFIQANKVTRSVGECVEYYLWKKSER
 DYFAQQTRLGRRKYVPSGTTDADQDL DGSDDPGPRRPEQDTLTGMRTDPLSVDGTAGGLDEPGVSDG
 LPSSEPGPCSFQQLDESPAVPLSHRPPALADPASYQPAVTAPEPDASPRLAVDFA LPKELPLISSHV DLS
 GDPEETVAPAQVALSVTEFGLIGIGDVPFLAAHPTCPAPGLHSEPLSHCNVMT

TRTRPLE - GFP Tag - V

Restriction Sites:

Sgfl-MluI

Cloning Scheme:


ACCN: NM_017550

ORF Size: 1635 bp

OTI Disclaimer: The molecular sequence of this clone aligns with the gene accession number as a point of reference only. However, individual transcript sequences of the same gene can differ through naturally occurring variations (e.g. polymorphisms), each with its own valid existence. This clone is substantially in agreement with the reference, but a complete review of all prevailing variants is recommended prior to use. [More info](#)

OTI Annotation: This clone was engineered to express the complete ORF with an expression tag. Expression varies depending on the nature of the gene.

Components: The ORF clone is ion-exchange column purified and shipped in a 2D barcoded Matrix tube containing 10ug of transfection-ready, dried plasmid DNA (reconstitute with 100 ul of water).

Reconstitution Method:

1. Centrifuge at 5,000xg for 5min.
2. Carefully open the tube and add 100ul of sterile water to dissolve the DNA.
3. Close the tube and incubate for 10 minutes at room temperature.
4. Briefly vortex the tube and then do a quick spin (less than 5000xg) to concentrate the liquid at the bottom.
5. Store the suspended plasmid at -20°C. The DNA is stable for at least one year from date of shipping when stored at -20°C.

RefSeq: [NM_017550.2](#)

RefSeq Size: 2825 bp

RefSeq ORF: 1638 bp

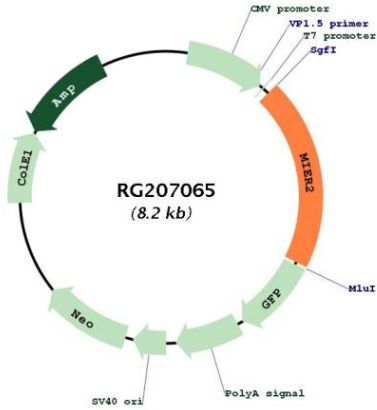
Locus ID: 54531

UniProt ID: [Q8N344](#)

Cytogenetics: 19p13.3

Gene Summary: Transcriptional repressor.[UniProtKB/Swiss-Prot Function]

Product images:



Circular map for RG207065