

Product datasheet for **RG207061**

SLC25A34 (NM_207348) Human Tagged ORF Clone

Product data:

Product Type:	Expression Plasmids
Product Name:	SLC25A34 (NM_207348) Human Tagged ORF Clone
Tag:	TurboGFP
Symbol:	SLC25A34
Mammalian Cell Selection:	Neomycin
Vector:	pCMV6-AC-GFP (PS100010)
E. coli Selection:	Ampicillin (100 ug/mL)
ORF Nucleotide Sequence:	>RG207061 representing NM_207348 Red=Cloning site Blue=ORF Green=Tags(s)

TTTTGTAATACGACTCACTATAGGGCGGCCGGAATTCGTCGACTGGATCCGGTACCGAGGAGATCTGCC
GCC**CGATCGCC**

ATGGAGACGGTGCCCCAGCAGTGGACCTGGTGTGGGTGCTTCTGCCTGCTGCCTGGCCTGTGTCTTCA
CCAACCCCTGGAGGTGGTGAAGACGCGGCTGCAGCTGCAGGGGAGCTGCAGGCCGGGGCACCTACCC
ACGGCCCTACCATGGCTTCATAGCCTCTGTGCTGCTGTGGCCGAGCAGACGGGCTGTGGGGCTGCAG
AAGGGCTGGCTGCCGGCCTTCTGTACCAAGGCCTCATGAATGGCGTTCGTTTCTACTGCTACAGCCTGG
CGTGCCAGGCTGGCCTCACGACGAACCAAGTGGCACCGTGGTTGCGGGAGCCGTGGCGGGGCACTGGG
AGCCTTCTGGGGAGCCCTGCTTACCTGATCAAAACGCAGCTGCAAGCTCAGACAGTGGCCGAGTGGCC
GTGGGACACCAGCAATCACCAGACTGTCTGGGTGCCTTGGAGACCATCTGGCGGCAGCAAGGGCTCT
TGGGGCTGTGGCAGGGCTTGGTGGGGCTGTGCCCGAGTCATGGTGGGCTCAGCTGCCAGCTGGCCAC
CTTCGCTCTGCCAAGGCCTGGGTACAGAAGCAACAGTGGCTCCCTGAGGACAGCTGGCTGGTGGCCCTG
GCTGGGGCATGATCAGCAGCATAGCCGTGGTGTGTCGTCATGACTCCCTTCGATGTGGTCAACACGGC
TATAAATCAGCCGGTGGACACAGCTGGCAGGGGCCAGCTCTATGGGGCCTCACCGACTGCATGGTGAA
GATCTGGCGGCAGGAGGGCCCCCTGGCACTCTACAAGGGCCTGGGCCCGCCTACCTGCGCTGGGGCC
CACACCATCTCAGCATGCTTCTGGGACGAGCTTCGAAACTGGCTGGCGGGCCAGCACAAAGGGCA
CC

ACGCGTACGCGGCCGCTCGAG - GFP Tag - GTTTAA



[View online »](#)

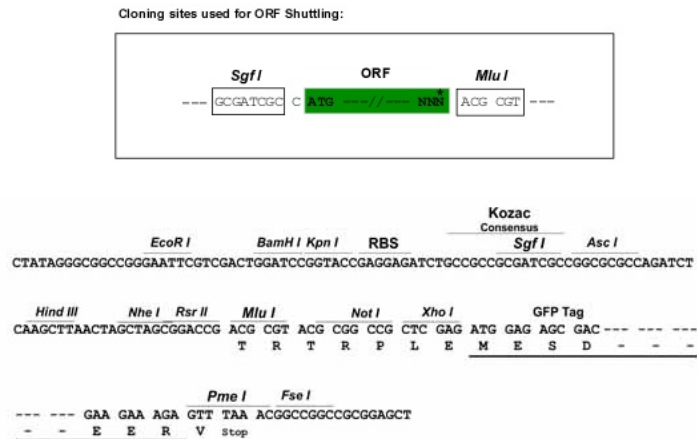
Protein Sequence: >RG207061 representing NM_207348
 Red=Cloning site Green=Tags(s)

METVPPAVDLVLGASACCLACVFTNPLEVVKTRLQLQGELQARGTYPRPYHGF IASVAVARADGLWGLQ
 KGLAAGLLYQGLMNGVRFYCYSLACQAGLTQQPGGTVVAGAVAGALGAFVGSPAYLIKTLQAQTVAAVA
 VGHQHNHQTIVLGALETIWRQGLLGLWQGVGGAVPRVMVGSAAQLATFASAKAWVQKQWLPEDSLVAL
 AGGMISSIAVVVVMTPFDDVSTRLYNQPVDTAGRGQLYGGLTDCMVKIWRQEGPLALYKGLGPAYLRLGP
 HTILSMLFWDELRLKLAGRAQHKG

TRTRPLE - GFP Tag - V

Restriction Sites: SgfI-MluI

Cloning Scheme:



ACCN: NM_207348

ORF Size: 912 bp

OTI Disclaimer: The molecular sequence of this clone aligns with the gene accession number as a point of reference only. However, individual transcript sequences of the same gene can differ through naturally occurring variations (e.g. polymorphisms), each with its own valid existence. This clone is substantially in agreement with the reference, but a complete review of all prevailing variants is recommended prior to use. [More info](#)

OTI Annotation: This clone was engineered to express the complete ORF with an expression tag. Expression varies depending on the nature of the gene.

Components: The ORF clone is ion-exchange column purified and shipped in a 2D barcoded Matrix tube containing 10ug of transfection-ready, dried plasmid DNA (reconstitute with 100 ul of water).

Reconstitution Method:

1. Centrifuge at 5,000xg for 5min.
2. Carefully open the tube and add 100ul of sterile water to dissolve the DNA.
3. Close the tube and incubate for 10 minutes at room temperature.
4. Briefly vortex the tube and then do a quick spin (less than 5000xg) to concentrate the liquid at the bottom.
5. Store the suspended plasmid at -20°C. The DNA is stable for at least one year from date of shipping when stored at -20°C.

RefSeq: [NM_207348.3](#)

RefSeq Size: 3172 bp

RefSeq ORF: 915 bp

Locus ID: 284723

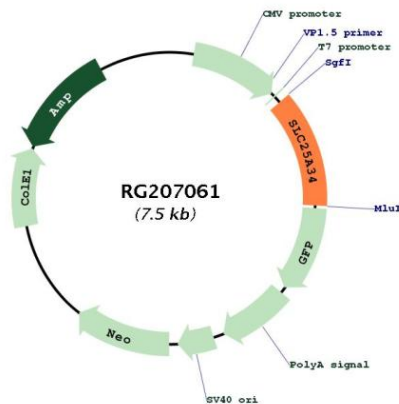
UniProt ID: [Q6PIV7](#)

Cytogenetics: 1p36.21

Protein Families: Transmembrane

Gene Summary: SLC25A34 belongs to the SLC25 family of mitochondrial carrier proteins (Haitina et al., 2006 [PubMed 16949250]).[supplied by OMIM, Mar 2008]

Product images:



Circular map for RG207061