

## Product datasheet for **RG207041**

### **LENG8 (NM\_052925) Human Tagged ORF Clone**

#### **Product data:**

Product Type:	Expression Plasmids
Product Name:	LENG8 (NM_052925) Human Tagged ORF Clone
Tag:	TurboGFP
Symbol:	LENG8
Synonyms:	pp13842
Mammalian Cell Selection:	Neomycin
Vector:	pCMV6-AC-GFP (PS100010)
E. coli Selection:	Ampicillin (100 ug/mL)



[View online »](#)

**ORF Nucleotide Sequence:**

>RG207041 representing NM\_052925  
 Red=Cloning site Blue=ORF Green=Tags(s)

TTTTGTAATACGACTCACTATAGGGCGGCCGGGAATTCGTCGACTGGATCCGGTACCGAGGAGATCTGCC  
 GCC**CGGATCGCC**

ATGGCGGCCAACGTGGGTGATCAACGTAGCACAGATTGGTCTTCTCAGTACAGCATGGTGGCTGGGGCAG  
 GCCGAGAGAATGGCATGGAGACGCCGATGCACGAGAACC CGAGTGGGAGAAGGCCCGTCAGGCCCTGGC  
 CAGCATCAGCAAGTCAGGAGCTGCCGGCGCTCTGCCAAGTCCAGCAGCAATGGGCTGTGGCCAGTGCA  
 CAGTACGTGTCCCAGGCAGAAGCCTCAGCTTTCAGCAGCAGCAGTACTACCAGTGGTACCAGCAGTACA  
 ACTATGCCTACCCCTACAGCTACTACTATCCCATGAGCATGTACCAGAGCTATGGCTCCCCTTCCAGTA  
 TGGGATGGCCGGCTCCTATGGCTCAGCCACACCCAGCAGCCATCCGCACCCCAACCAAGGGACTCTG  
 AACCCAGCCCCAGTCCCCGGCATGGATGAGAGCATGTCTACCAGGCTCCCCCTCAGCAGCTGCCGTCGG  
 CTCAGCCCCCTCAGCCCTCAAATCCCCACATGGGGCTCACACGCTGAACAGTGGCCCTCAGCCTGGGAC  
 AGCTCCAGCCACACAGCAGCCAGGCGGGGCCGCCACGGGCCAGGCCTATGGGCCACACACCTACACC  
 GAACCTGCCAAGCCCAAGAAGGGCCAACAGCTGTGGAACCGCATGAAACCCGCCCTGGGACTGGAGGTC  
 TCAAGTTCAACATCCAGAAGCGACCCTTTGCTGTTACCACCCAGAGCTTTGGCTCCAACGCAGAGGGCCA  
 GCACAGTGGTTTTGGCCCCAGCCCAACCTGAGAAAAGTTCAGAACACAGCGGGTCTCTGCCCGGGG  
 AACCTGTCTGGGAAGCCGGATGACTGGCCCCAGGACATGAAAGAGTATGTGGAGCGCTGCTTACCAGCCT  
 GTGAGTCGGAGGAGGACAAGGACCGCACGAAAAGCTGCTCAAGGAGGTGCTGCAGGCGCGGCTGCAGGA  
 CGGCTCGGCCTATACATTGACTGGAGCCGGGAGCCCTTGCCGGGGTGCACCCGGGAGCCTGTGGCTGAG  
 AGCCCTAAGAAGAAGCGGTGGGAGGCCGCTAGCAGCCTTACCCTCCTAGAGGGGAGCCTCGGCGACAA  
 GGGCGGGGGTGCCCGTCCCAGCGAGGGACGCCGGGGTGGGGTGGCGTGCAGCCCGGGCAACAG  
 CTTACCAAGTTTGGCAACCGCAACGTCTTATGAAGGACAACAGCTCTTCTTCCAGCACAGACTCCCGC  
 TCCCGCTCCTCCTCCAGGTCCCCGACGCGCCACTTCCGCAAGTACTCCCACTCAGACTCCGACAGCT  
 CCTACTCAGGGAATGAGTGTACCCTGTGGGCCGAGGAACCCGCCCTAAGGGCCGGGGCGTGCAGG  
 GGCCCATATGGATCGGGCCGAGGCAGGGCGCAGCGTGGGAAGAGGCACGATCTGGCGCCACCAAGCGC  
 AGTCGAAAGAAGATGGCGGCGTGGAGTGTGAGGACCCGAGCGAGAGCTGAAGAAGCAGAAGCGGGCAG  
 CCCGCTTCCAGCACGGACTCCCGCCGCTGCGCCTCGAGCCCTGGTGTGCAGATGAGCAGCCTGGA  
 GAGCAGTGGGGTACCCTGACTGGCAGGAGCTGCAGATCGTGGGCACCTGCCCTGACATACCAAGCAC  
 TACCTGCGCCTCACCTGTGCCCCGACCCGTCCACCGTGCGCCCTGTGGCAGTTTTGAAAAAGTCGCTGT  
 GCATGGTCAAGTGCCACTGGAAAGAGAAGCAGGACTACCGTTTTGCCTGCGAGCAGATGAAGTCGATCCG  
 GCAGGATCTGACGGTGCAGGGCATCCGCACCGAGTTCACGGTGGAGGTGTACGAGACCCATGCCCGGATC  
 GCCTTGGAGAAGGGTGACCATGAAGAGTTAAACCAGTGCCAGACGCAGCTCAAGTCGCTGTACGCCGAGA  
 ACTTGCCTGGCAATGTGGGCGAGTTTACTGCCTACCGAATCCTCTACTACATCTTACCAAGAAGCTGGG  
 AGACATCACACGGAGCTGGCATACTCACACGAGAAGTGAAGGCAGATCCTTGGTGGCCACGCCTTG  
 GCATTAAGGACAGCCTGGGCCCTGGGCACTACCACCGCTTTTCCGGCTCTACTGCCATGCACCCCTGCA  
 TGTCTGGTACCTCGTGGACAAGTTTGCAGATCGGGAGCGCAAGTTCGCCCTCAAGGCCATGATCAAAAC  
 CTTCCGCCCTGCGCTGCCAGTCTCCTACCTGCAGGCCGAGCTGGCCTTCGAGGGCGAGGCCGCTGCCGG  
 GCCTTCTAGAGCCCTGGCCCTACACGGGCCCGGACAACCTCCAGCATCGACTGCCGCTCAGCC  
 TGGCGCAGCTGTACGCTTC

AG**CGGACCG**ACGCGTACGCGGCCGCTCGAG - GFP Tag - GTTTAA

**Protein Sequence:** >RG207041 representing NM\_052925  
 Red=Cloning site Green=Tags(s)

```

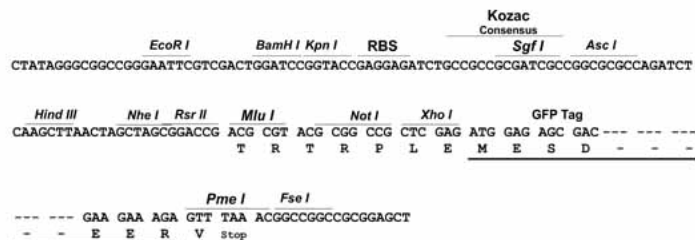
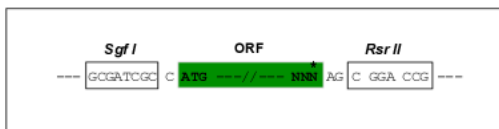
MAANVGDRSTDWSSQYSMVAGAGRENGMETPMHENPEWEKARQALASISKSGAAGGSAKSSSNPVASA
QYVSQAEASALQQQYYQWYQQYNYAYPYSYYYPMSMYQSYGSPSQYGMAGSYGSATPQQPSAPQHGTL
NQPPVPGMDESMSYQAPPQQLPSAQPPQPSNPPHGAHTLNSGPQPGTAPATQHSQAGPATGQAYGPHTYT
EPAKPKKGQQLWNRMKPAPGTGGLKFNIQKRPFVTTQSFSGNAEQHSGFGPQPNPEKVQNHSGSSARG
NLSGKPDWPDQMKKEYVERCFTACESEEDKDRTEKLLKEVLQARLQDGSAYTIDWSREPLPGLTREPVAE
SPKKKRWEAASSLHPPRGAGSATRGGGAPSQRGTPGAGGAGRARGNSFTKFGNRRVFMKDNSSSSSTDSR
SRSSSRSPTRHFRSDSHSDSDSSYSGNECHPVGRRNPPPKGRGGRGAHMDRGRGRAQRGKRHDLAPTGR
SRKKMAALECEDPERELKKQKRAARFQHGHSRRLRLEPLVLQMSSESSGADPDWQELQIVGTCPDITKH
YLRLTCAPDPSTVRPVAVLKKSLCMVKCHWKEKQDYAFACEQMKSIHQDLTVQGIRTEFTVEVYETHARI
ALEKGDHEEFNQCTQLKSLYAENLPGNVGEFTAYRILYYIFTKNSGDITTELAYLTRELKADPCVAHAL
ALRTAWALGNYHRFFRLYCHAPCMGYLVDKFAADRERKVALKAMIKTRPALPVSYLQAEAFEGEAACR
AFLEPLGLAYTGPDNSSIDCRLSLAQLSAF
  
```

SGPTRRRLE - GFP Tag - V

**Restriction Sites:** SgfI-RsrII

**Cloning Scheme:**

Cloning sites used for ORF Shuttling:



**ACCN:** NM\_052925

**ORF Size:** 2400 bp

**OTI Disclaimer:** The molecular sequence of this clone aligns with the gene accession number as a point of reference only. However, individual transcript sequences of the same gene can differ through naturally occurring variations (e.g. polymorphisms), each with its own valid existence. This clone is substantially in agreement with the reference, but a complete review of all prevailing variants is recommended prior to use. [More info](#)

**OTI Annotation:** This clone was engineered to express the complete ORF with an expression tag. Expression varies depending on the nature of the gene.

**Components:** The ORF clone is ion-exchange column purified and shipped in a 2D barcoded Matrix tube containing 10ug of transfection-ready, dried plasmid DNA (reconstitute with 100 ul of water).

**Reconstitution Method:**

1. Centrifuge at 5,000xg for 5min.
2. Carefully open the tube and add 100ul of sterile water to dissolve the DNA.
3. Close the tube and incubate for 10 minutes at room temperature.
4. Briefly vortex the tube and then do a quick spin (less than 5000xg) to concentrate the liquid at the bottom.
5. Store the suspended plasmid at -20°C. The DNA is stable for at least one year from date of shipping when stored at -20°C.

**Note:** Plasmids are not sterile. For experiments where strict sterility is required, filtration with 0.22um filter is required.

**RefSeq:** [NM\\_052925.4](#)

**RefSeq Size:** 3720 bp

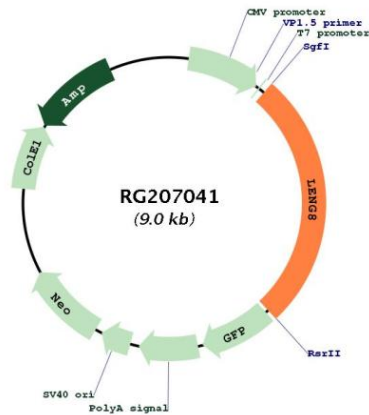
**RefSeq ORF:** 2403 bp

**Locus ID:** 114823

**UniProt ID:** [Q96PV6](#)

**Cytogenetics:** 19q13.42

**Product images:**



Circular map for RG207041