

## Product datasheet for **RG207039**

### **NXF1 (NM\_006362) Human Tagged ORF Clone**

#### **Product data:**

Product Type:	Expression Plasmids
Product Name:	NXF1 (NM_006362) Human Tagged ORF Clone
Tag:	TurboGFP
Symbol:	NXF1
Synonyms:	MEX67; TAP
Mammalian Cell Selection:	Neomycin
Vector:	pCMV6-AC-GFP (PS100010)
E. coli Selection:	Ampicillin (100 ug/mL)



[View online »](#)

**ORF Nucleotide Sequence:**

>RG207039 representing NM\_006362  
 Red=Cloning site Blue=ORF Green=Tags(s)

TTTTGTAATACGACTCACTATAGGGCGGCCGGAATTCGTCGACTGGATCCGGTACCGAGGAGATCTGCC  
 GCC**CGCATCGCC**

ATGGCGGACGAGGGGAAGTCGTACAGCGAACACGATGATGAACCGGTTAATTTCCCTCAAAGAAAGAAGA  
 AAGGCCGGGTCCCTTCCGGTGGAAATATGGTGAAGGAAACCGTAGGCTGGAAGAGCGGTTCTGGTAT  
 TCGGTCTTCCGCCTTGAGGAAGATGATGGAGATGTGGCAATGAGTGATGCCAGGATGGTCCCGAGTA  
 CGATAACAACCCTATACCACCCGACCTAACCGTCGGGGTGATACTTGGCATGATCGAGATCGCATTATG  
 TACTGTGCGGAGAGACAGAGCTCCTCCAGAGAGAGGAGGGGCTGGCACCAGCCAGGATGGGACCTCAA  
 GAACTGGTTCAAGATTACAATTCCTTATGGCAGAAAGTATGACAAGGCATGGCTCCTGAGCATGATTGAG  
 AGCAAGTGCAGTGTGCCCTTACCCTATTGAGTTTCACTATGAGAATACACGGGCCAGTTCTTCGTTG  
 AAGACGCCAGTACTGCCTCTGCATTGAAGGCTGTCAACTATAAGATTTTGGATCGGGAGAACCGAAGGAT  
 ATCTATCATCACTCTTCTGCTCCACCCACACTATACTGAATGAAGTGAAGCCAGAACAAGTAGAA  
 CAGCTAAAGCTGATCATGAGCAAACGATACGATGGCTCCCAACAAGCCCTTGACCTCAAAGGCCCTCCGT  
 CAGACCCAGATTTGGTGGCCAGAACATTGACGTTGTCCTGAATCGCAGAAGCTGTATGGCAGCTACCC  
 GAGGATCATTGAAGAGAACATCCCTGAGCTATTGTCTTGAACCTGAGCAACAACAGGCTGTACAGGCTG  
 GATGACATGTCTAGCATTGTTGAGAAGGCACCAACCTGAAGATCCTAAACCTTTCTGGAATGAATTGA  
 AGTCTGAGCGGGAATTGGACAAGATAAAGGGGCTGAAGCTAGAAGAGCTCTGGCTCGATGGAAATCCCT  
 GTGTGACACCTCCGAGACCAGTCCACCTACATCAGCGCCATTCGCGAACGATTTCCCAAGTTACTACGC  
 CTGGATGGCCATGAGTACCCCAACCAATTGCCTTGTGTTGAAGCCCCACGACGTTACCGCCCTGCA  
 AGGGAAGCTATTTGGAACAGAAAACCTGAAGAGTCTGGTCTTGCACTTCTGCAACAGTACTATGCAAT  
 TTACGACTCTGGAGACCGACAAGGGCTCCTGGATGCCTACCATGATGGGGCCTGCTGTTCCCTGAGCAT  
 CCTTTCATTCTCAGAACCCTGCCCGAAGCAGCTTAGCCGAGATTTCAAGGATAGCAGAAATGTGAAGA  
 AGCTTAAAGACCCTACCTTGCAGTTCCGGCTGCTGAAGCACACGCGTCTCAACGTTGTTGCCTTCTCAA  
 TGAGTTGCCAAAACCCAGCAGCAGCTCAATTCCTTCTGGTAGACATAAGCGCCAGACAAGCACATTG  
 CTGTGTTTTCTGCAATGGAGTCTTCAAGGAAGTGGACGAAAGTCCCGGATTCTTTCGAGCCTTCA  
 CCCGGACATTCATTGCTGTTCTGCTAGCAATTCAGGGCTATGTATTGTAATGATGAGCTATTTGTGCG  
 GAATGCCAGTTCTGAAGAGATCCAAAGAGCCTTCGCTATGCCTGCACCCACGCTTCTCCAGCCCGGTG  
 CCCACCCTCTCTCAGAGCAGCAGGAAATGTTGCAAGCATTCTCTACCCAGTCTGGCATGAACCTCGAGT  
 GGTCACAGAAAGTGCCTTACAGACAACAACCTGGGACTACACCAGATCTGCCAGGCCCTTCACTCATCTCAA  
 GGCCAAGGGCGAGATCCAGAAGTGGCATTTCATGAAG

AG**CGGACCG**ACGCGTACGCGGCCGCTCGAG - GFP Tag - GTTTAA

**Protein Sequence:**

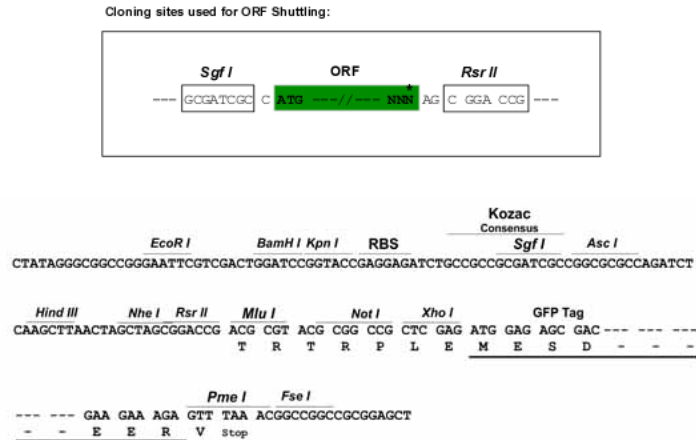
>RG207039 representing NM\_006362  
 Red=Cloning site Green=Tags(s)

MADEGKSYSEHDDERVNFPQRKKKGRGPFWRKYGEGNRRSGRGGSGIRSSRLEEDDGDVAMSDAQDQPRV  
 RYNPYTTRPNRRGDTWHRDRIHVTVRRDRAPPERGGAGTSQDGTSKNWFKITIPYGRKYDKAWLLSMIQ  
 SKCSVPFTPIEFHYENTRAQFFVEDASTASALKAVNYKILDRENRRISIIINSSAPPHTILNELKPEQVE  
 QLKLIMSKRYDGSQQALDLKGLRSDPDVAQNIDVVLNRRSCMAATLRIIEENIPELLSLNLNNRLYRL  
 DMSSIVQKAPNLKILNLSGNELKSERELDKIKGLKLEELWLDGNSLCDTFRDQSTYISAIRERFPKLLR  
 LDGHELPPPIAFDVEAPTTLPCKGSYFGTENLKSLLVHFLQYYAIYDSGDRQGLLDAYHDGACCSLSI  
 PFIPQNPARRSLAEYFKDSRNVKLLKDPTLRFRLLKHTRLNVVAFNLNPKTQHDVNSFVVDISAQTSTL  
 LCFVNGVFKEVDGKSRDSLRAFTRTFIAPVANSGLCIVNDELVFNASSEEIQRAFAMPAPTSSSPV  
 PTLSPQQEMLQAFSTQSGMNLWSQKCLQDNNWDYTRSAQAFTHLKAKGEIPEVAFMK

SGP**TRRRLE** - GFP Tag - V

**Restriction Sites:**

Sgfl-RsrII

**Cloning Scheme:**


**ACCN:** NM\_006362

**ORF Size:** 1857 bp

**OTI Disclaimer:** The molecular sequence of this clone aligns with the gene accession number as a point of reference only. However, individual transcript sequences of the same gene can differ through naturally occurring variations (e.g. polymorphisms), each with its own valid existence. This clone is substantially in agreement with the reference, but a complete review of all prevailing variants is recommended prior to use. [More info](#)

**OTI Annotation:** This clone was engineered to express the complete ORF with an expression tag. Expression varies depending on the nature of the gene.

**Components:** The ORF clone is ion-exchange column purified and shipped in a 2D barcoded Matrix tube containing 10ug of transfection-ready, dried plasmid DNA (reconstitute with 100 ul of water).

**Reconstitution Method:**

1. Centrifuge at 5,000xg for 5min.
2. Carefully open the tube and add 100ul of sterile water to dissolve the DNA.
3. Close the tube and incubate for 10 minutes at room temperature.
4. Briefly vortex the tube and then do a quick spin (less than 5000xg) to concentrate the liquid at the bottom.
5. Store the suspended plasmid at -20°C. The DNA is stable for at least one year from date of shipping when stored at -20°C.

**Note:** Plasmids are not sterile. For experiments where strict sterility is required, filtration with 0.22um filter is required.

**RefSeq:** [NM\\_006362.5](#)

**RefSeq Size:** 2346 bp

**RefSeq ORF:** 1860 bp

**Locus ID:** 10482

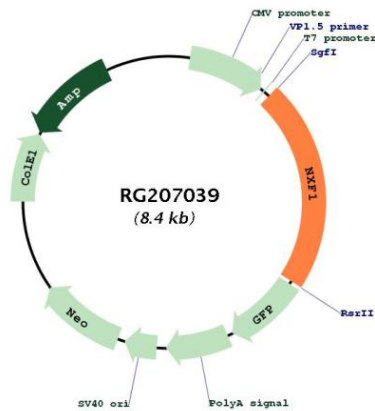
UniProt ID: [Q9UBU9](#)

Cytogenetics: 11q12.3

Domains: LRR, NTF2, TAP\_C

**Gene Summary:** This gene is one member of a family of nuclear RNA export factor genes. Common domain features of this family are a noncanonical RNP-type RNA-binding domain (RBD), 4 leucine-rich repeats (LRRs), a nuclear transport factor 2 (NTF2)-like domain that allows heterodimerization with NTF2-related export protein-1 (NXT1), and a ubiquitin-associated domain that mediates interactions with nucleoporins. The LRRs and NTF2-like domains are required for export activity. Alternative splicing seems to be a common mechanism in this gene family. The encoded protein of this gene shuttles between the nucleus and the cytoplasm and binds in vivo to poly(A)<sup>+</sup> RNA. It is the vertebrate homologue of the yeast protein Mex67p. The encoded protein overcomes the mRNA export block caused by the presence of saturating amounts of CTE (constitutive transport element) RNA of type D retroviruses. Alternative splicing results in multiple transcript variants. [provided by RefSeq, Jul 2008]

**Product images:**



Circular map for RG207039