

## Product datasheet for **RG207038**

### CNPase (CNP) (NM\_033133) Human Tagged ORF Clone

#### Product data:

Product Type:	Expression Plasmids
Product Name:	CNPase (CNP) (NM_033133) Human Tagged ORF Clone
Tag:	TurboGFP
Symbol:	CNPase
Synonyms:	CNP1
Mammalian Cell Selection:	Neomycin
Vector:	pCMV6-AC-GFP (PS100010)
E. coli Selection:	Ampicillin (100 ug/mL)
ORF Nucleotide Sequence:	>RG207038 representing NM_033133 Red=Cloning site Blue=ORF Green=Tags(s)

TTTTGTAATACGACTCACTATAGGGCGGCCGGAATTCGTCGACTGGATCCGGTACCGAGGAGATCTGCC  
GCC**CGATCGCC**

ATGAACAGAGGCTTCTCCCGAAAAAGCCACACATTCTGCCCAAGATCTTCTCCGCAAGATGTCATCCT  
CAGGGGCCAAGGACAAGCCTGAGCTGCAGTTCCCTTCTTCAGGATGAGGACACAGTGGCCACGCTGCT  
AGAGTGAAGACGCTCTCATCTTGC GCGCCTGCCAGGAAGCGCAAGTCCACGCTGGCACGGGTATC  
GTGGACAAGTACCGTATGGCACCAAGATGGTGTGGCTGACGCTACAAGATCACCCCGCGCTCGAG  
GAGCCTTCTCCGAGGAGTACAAGCGGCTCGATGAGGACCTGGCTGCCTACTGCCCGCCGGGACATCAG  
AATTCTTGTTGCTTATGACACCAACCACGAACGGGAACGGCTGGAGCAGCTCTTTGAAATGGCCGACCAG  
TACCAGTACCAGGTGGTCTGGTGGAGCCAAAGACGGCGTGGCGGCTGGACTGTGCCAGCTCAAGGAGA  
AGAACCAGTGGCAGCTGTGGCTGATGACCTGAAGAAGCTGAAGCCTGGGCTGGAGAAGGACTTCTGCC  
GCTCTACTTCGGCTGGTTCTGACCAAGAAGAGCTCTGAGACCCTCCGCAAAGCCGGCCAGGTCTTCTG  
GAAGAGCTGGGGAACCACAAGGCCTTCAAGAAGGAGCTGCGACAATTCTGCTCCCTGGGGATGAGCCAGGG  
AGAAGATGGACTTGGTCACCTACTTTGAAAGAGACCCCGGCGTGTGATTGACAACCAAGTTTTG  
TGACTACGGGAAGGCTCCCGGGCAGAGGAGTACGCTCAACAAGATGTGTTAAAGAAATCTTACTCCAAG  
GCCTTCACGCTGACCATCTTCCCTCTTTGTGACACCCAAGACGACTGGGGCCCGGTGGAGTTAAGCG  
AGCAGCAACTGCAGTTGTGGCCGAGTGATGTGGACAAGCTGTACCCACTGACAACCTGCCCGGGGGAG  
CCGCGCCACATCACCTCGGCTGTGACGTGACGTAGAGGCCGTGCAGACGGGCCTTGACCTCTTAGAG  
ATTCTGCGGCAGGAGAAGGGGGCAGCCGAGGCGAGGAGTGGCGAGCTAAGCCGGGGCAAGCTTATT  
CCTTGGGCAATGGGCGCTGGATGCTGACCCTGGCCAAGAACATGGAGGTGAGGGCCATCTTACGGGGTA  
CTACGGGAAAGGCAAACCTGTGCCACGCAAGGTAGCCGGAAGGGGGCGCCTTGACGTCTGCACCATC  
ATA

**ACGCGT**ACGCGGCCGCTCGAG - GFP Tag - GTTTAA



[View online »](#)

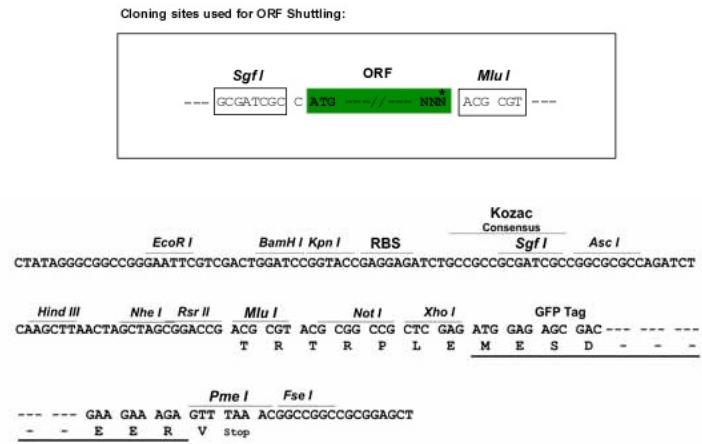
**Protein Sequence:** >RG207038 representing NM\_033133  
 Red=Cloning site Green=Tags(s)

MNRGFSRKSHTFLPKIFFRKMSSSGAKDKPELQFPFLQDEDTVATLLECKTLFILRGLPGSGKSTLARVI  
 VDKYRDGTMVSADAYKITPGARGAFSEYKRLDEDLAAYCRRRDIRILVLDDTNHERERLEQLFEMADQ  
 YQYQVVLVEPKTAWRLDCAQLKEKNQWQLSADDLKKLPGLEKDFLPLYFGWFLTKKSSETLRKAGQVFL  
 EELGNHKAFKKELRQFVPGDEPREKMDLVTYFGKRPPGVLHCTTKFCDYGKAPGAEYYAQDVLKKSYSK  
 AFTLTISALFVTPKTTGARVELSEQQLLWPSVDKLSPTDNLPRGSRAHITLGCADVEAVQTGLDLLE  
 ILRQEKGGSRGEEVGELSRGKLYSLGNRWMLTLAKNMEVRAIFTGYYGKGPVPTQGSRKGGALQSCTI  
 I

TRTRPLE - GFP Tag - V

**Restriction Sites:** SgfI-MluI

**Cloning Scheme:**



**ACCN:** NM\_033133

**ORF Size:** 1263 bp

**OTI Disclaimer:** The molecular sequence of this clone aligns with the gene accession number as a point of reference only. However, individual transcript sequences of the same gene can differ through naturally occurring variations (e.g. polymorphisms), each with its own valid existence. This clone is substantially in agreement with the reference, but a complete review of all prevailing variants is recommended prior to use. [More info](#)

**OTI Annotation:** This clone was engineered to express the complete ORF with an expression tag. Expression varies depending on the nature of the gene.

**Components:** The ORF clone is ion-exchange column purified and shipped in a 2D barcoded Matrix tube containing 10ug of transfection-ready, dried plasmid DNA (reconstitute with 100 ul of water).

**Reconstitution Method:**

1. Centrifuge at 5,000xg for 5min.
2. Carefully open the tube and add 100ul of sterile water to dissolve the DNA.
3. Close the tube and incubate for 10 minutes at room temperature.
4. Briefly vortex the tube and then do a quick spin (less than 5000xg) to concentrate the liquid at the bottom.
5. Store the suspended plasmid at -20°C. The DNA is stable for at least one year from date of shipping when stored at -20°C.

**RefSeq:** [NM\\_033133.5](#)

**RefSeq Size:** 5222 bp

**RefSeq ORF:** 1266 bp

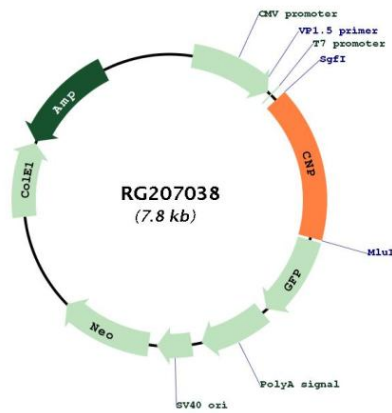
**Locus ID:** 1267

**UniProt ID:** [P09543](#)

**Cytogenetics:** 17q21.2

**Gene Summary:** May participate in RNA metabolism in the myelinating cell, CNP is the third most abundant protein in central nervous system myelin.[UniProtKB/Swiss-Prot Function]

**Product images:**



Circular map for RG207038