

## Product datasheet for **RG207037**

### Alpha SNAP (NAPA) (NM\_003827) Human Tagged ORF Clone

#### Product data:

Product Type:	Expression Plasmids
Product Name:	Alpha SNAP (NAPA) (NM_003827) Human Tagged ORF Clone
Tag:	TurboGFP
Symbol:	Alpha SNAP
Synonyms:	SNAPA
Mammalian Cell Selection:	Neomycin
Vector:	pCMV6-AC-GFP (PS100010)
E. coli Selection:	Ampicillin (100 ug/mL)
ORF Nucleotide Sequence:	>RG207037 representing NM_003827 Red=Cloning site Blue=ORF Green=Tags(s)

TTTTGTAATACGACTCACTATAGGGCGGCCGGAATTCGTCGACTGGATCCGGTACCGAGGAGATCTGCC  
GCC**CGATCGCC**

ATGGACAATCCGGGAAGGAAGCGGAGGCGATGGCGCTGTTGGCCGAGGCGGAGCGCAAAGTGAAGAACT  
CGCAGTCCTTCTTCTCTGGCCTCTTTGGAGGCTCATCCAAAATAGAGGAAGCATGCGAAATCTACGCCAG  
AGCAGCAAACATGTTCAAATGGCCAAAACCTGGAGTGTCTGTTGAAACCGGTTCTGCCAGGCTGCACAG  
CTGCACCTGCAGCTCCAGAGCAAGCACGACGACCCACCTGCTTTGTGGACGCTGGCAACGCATTCAAGA  
AAGCCGACCCCAAGAGGCCATTAAGTGTGGATGCGAGCAATCGAGATCTACACAGACATGGGCCGATT  
CAGGATTGCGGCCAAGCACCACATCTCCATTGCTGAGATCTATGAGACAGAGTTGGTGGACATCGAGAAG  
GCCATTGCCACTACGAGCAGTCTGCACTACTACAAAGGCGAGGAGTCCAACAGCTCAGCCAACAAGT  
GTCTGCTGAAGGTGGCTGGTTACGCTGCGCTGCTGGAGCAGTATCAGAAGGCCATTGACATCTACGAACA  
GGTGGGGACCAATGCCATGGACAGCCCCCTCTCAAGTACAGCGCCAAAGACTACTTCTTCAAGCGGCC  
CTCTGCCACTTCTGCATCGACATGCTCAACGCCAAGCTGGCTGTCCAAAAGTATGAGGAGCTGTTCCAG  
CTTTCTCTGATCCCGGGAATGCAAGTTGATGAAAAAATGCTAGAGGCCACGAGGAGCAGAATGTGGA  
CAGCTACACCGAGTCGGTGAAGGAATACGACTCCATCTCCCGGCTGGACCAGTGGCTCACCACCATGCTG  
CTGCGCATCAAGAAGACCATCCAGGGCGATGAGGAGGACCTGCGC

AG**CGGACCG**ACGCGTACGCGGCCGCTCGAG - GFP Tag - GTTTAA



[View online »](#)

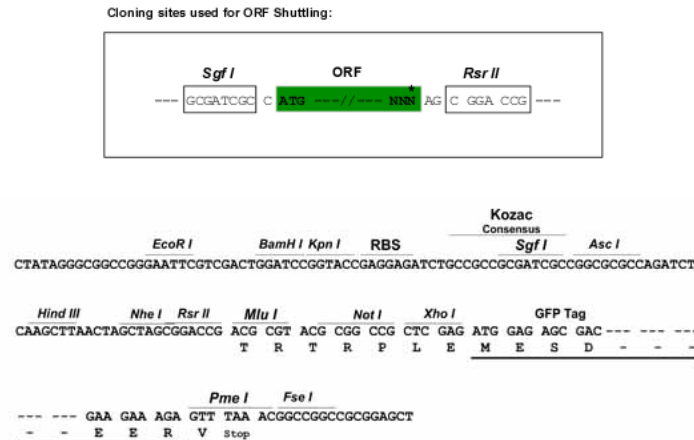
**Protein Sequence:** >RG207037 representing NM\_003827  
Red=Cloning site Green=Tags(s)

MDNSGKEAEAMALLAEERKVKNSQSFSSGLFGGSSKIEEACEIYARAANMFKMAKNWSAAGNAFCQAAQ  
 LHLQLQSKHDAATCFVDAGNAFKKADPQEAINCLMRAIEIYDTMGRFTIAAKHHISIAEIIYETELVDIEK  
 AIAHYEQSADYYKGEESNSSANKCLLKVAGYAALLEQYQKAIIDIYEQVTNAMDSPLLKYSADYFFKAA  
 LCHFCIDMLNAKLAVQKYEELFFAFSDSRECKLMKKLLEAHEEQNVDSYTESVKEYDSISRLDQWLTTML  
 LRIKKTIQGDEEDLR

SGPTRRRLE - GFP Tag - V

**Restriction Sites:** SgfI-RsrII

**Cloning Scheme:**



**ACCN:** NM\_003827

**ORF Size:** 885 bp

**OTI Disclaimer:** The molecular sequence of this clone aligns with the gene accession number as a point of reference only. However, individual transcript sequences of the same gene can differ through naturally occurring variations (e.g. polymorphisms), each with its own valid existence. This clone is substantially in agreement with the reference, but a complete review of all prevailing variants is recommended prior to use. [More info](#)

**OTI Annotation:** This clone was engineered to express the complete ORF with an expression tag. Expression varies depending on the nature of the gene.

**Components:** The ORF clone is ion-exchange column purified and shipped in a 2D barcoded Matrix tube containing 10ug of transfection-ready, dried plasmid DNA (reconstitute with 100 ul of water).

**Reconstitution Method:**

1. Centrifuge at 5,000xg for 5min.
2. Carefully open the tube and add 100ul of sterile water to dissolve the DNA.
3. Close the tube and incubate for 10 minutes at room temperature.
4. Briefly vortex the tube and then do a quick spin (less than 5000xg) to concentrate the liquid at the bottom.
5. Store the suspended plasmid at -20°C. The DNA is stable for at least one year from date of shipping when stored at -20°C.

**RefSeq:** [NM\\_003827.4](#)

**RefSeq Size:** 1846 bp

**RefSeq ORF:** 888 bp

**Locus ID:** 8775

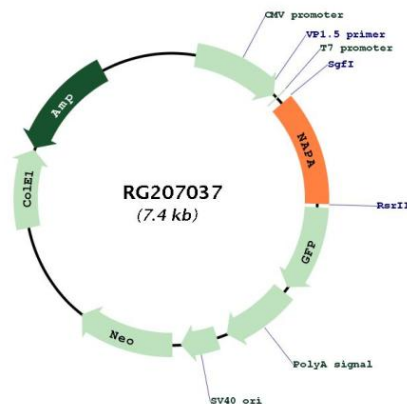
**UniProt ID:** [P54920](#)

**Cytogenetics:** 19q13.32-q13.33

**Domains:** NSF

**Gene Summary:** This gene encodes a member of the soluble NSF attachment protein (SNAP) family. SNAP proteins play a critical role in the docking and fusion of vesicles to target membranes as part of the 20S NSF-SNAP-SNARE complex. The encoded protein plays a role in the completion of membrane fusion by mediating the interaction of N-ethylmaleimide-sensitive factor (NSF) with the vesicle-associated and membrane-associated SNAP receptor (SNARE) complex, and stimulating the ATPase activity of NSF. Alternatively spliced transcript variants have been observed for this gene. [provided by RefSeq, Jun 2011]

### Product images:



Circular map for RG207037