

Product datasheet for **RG207031**

ICOS (NM_012092) Human Tagged ORF Clone

Product data:

Product Type: Expression Plasmids
Product Name: ICOS (NM_012092) Human Tagged ORF Clone
Tag: TurboGFP
Symbol: ICOS
Synonyms: AILIM; CD278; CVID1
Mammalian Cell Selection: Neomycin
Vector: pCMV6-AC-GFP (PS100010)
E. coli Selection: Ampicillin (100 ug/mL)
ORF Nucleotide Sequence: >RG207031 representing NM_012092
 Red=Cloning site Blue=ORF Green=Tags(s)

TTTTGTAATACGACTCACTATAGGGCGCCGGGAATTCGTCGACTGGATCCGGTACCGAGGAGATCTGCC
 GCC**CGATCGCC**

ATGAAGTCAGGCCTCTGGTATTTCTTTCTTCTGCTTGCGCATTAAGTTTTAACAGGAGAAATCAATG
 GTTCTGCCAATTATGAGATGTTTATATTTACACACGGAGGTGTACAAATTTATGCAAATATCCTGACAT
 TGTCAGCAATTTAAAAATGCAGTTGCTGAAAGGGGGCAAATACTCTGCGATCTCACTAAGACAAAAGGA
 AGTGAAAACACAGTGTCCATTAAGAGTCTGAAATCTGCCATTCTCAGTTATCCAACAACAGTGTCTCTT
 TTTTCTATACAACTTGGACCATTCTCATGCCAACTATTACTTCTGCAACCTATCAATTTTTGATCCTCC
 TCCTTTAAAGTAACTCTTACAGGAGGATATTTGCATATTTATGAATCACAACCTTTGTTGCCAGCTGAAG
 TTCTGGTTACCCATAGGATGTGCAGCCTTTGTTGTAGTCTGCATTTTGGGATGCATACTTATTTGTTGGC
 TTACAAAAAGAAGTATTCATCCAGTGTGCACGACCCTAACGGTGAATACATGTTTCATGAGAGCAGTGAA
 CACAGCCAAAAATCTAGACTCACAGATGTGACCCTA

ACGCGTACGCGGCCGCTCGAG - GFP Tag - GTTTAA

Protein Sequence: >RG207031 representing NM_012092
 Red=Cloning site Green=Tags(s)

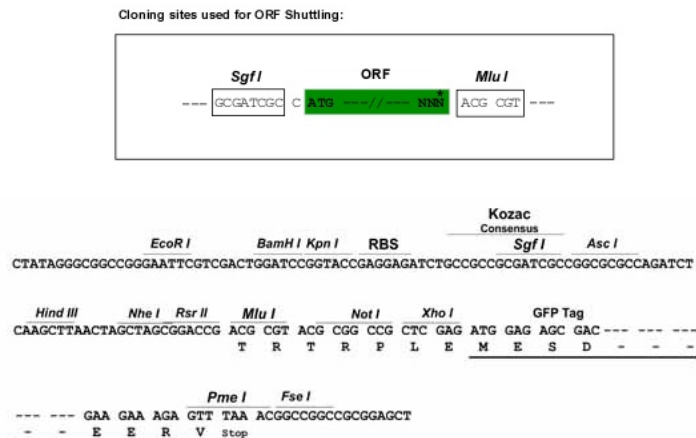
MKSGLWYFFLFCLRIKVL TGEINGSANYEMFIFHNGGVQILCKYPDIVQQFKMQLLKGQILCDLTKTKG
 SGNTVSIKSLKFCHSQLSNNSVSFFLYNLDHSHANYFCNLSIFDPPPFKVTLTGGYLHIYESQLCCQLK
 FWLPIGCAAFVVVCILGCILICWLTKKKYSSSVHDPNGEYMFMRVAVNTAKKSRLTDVTL

TRTRPLE - GFP Tag - V

Restriction Sites: Sgfl-MluI



[View online »](#)

Cloning Scheme:


ACCN: NM_012092

ORF Size: 597 bp

OTI Disclaimer: The molecular sequence of this clone aligns with the gene accession number as a point of reference only. However, individual transcript sequences of the same gene can differ through naturally occurring variations (e.g. polymorphisms), each with its own valid existence. This clone is substantially in agreement with the reference, but a complete review of all prevailing variants is recommended prior to use. [More info](#)

OTI Annotation: This clone was engineered to express the complete ORF with an expression tag. Expression varies depending on the nature of the gene.

Components: The ORF clone is ion-exchange column purified and shipped in a 2D barcoded Matrix tube containing 10ug of transfection-ready, dried plasmid DNA (reconstitute with 100 ul of water).

Reconstitution Method:

1. Centrifuge at 5,000xg for 5min.
2. Carefully open the tube and add 100ul of sterile water to dissolve the DNA.
3. Close the tube and incubate for 10 minutes at room temperature.
4. Briefly vortex the tube and then do a quick spin (less than 5000xg) to concentrate the liquid at the bottom.
5. Store the suspended plasmid at -20°C. The DNA is stable for at least one year from date of shipping when stored at -20°C.

RefSeq: [NM_012092.4](#)

RefSeq Size: 2620 bp

RefSeq ORF: 600 bp

Locus ID: 29851

UniProt ID: [Q9Y6W8](#)

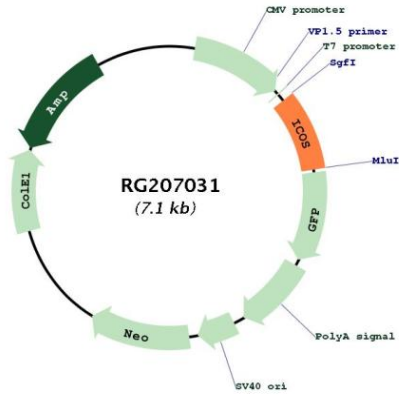
Cytogenetics: 2q33.2

Protein Families: Secreted Protein, Transmembrane

Protein Pathways: Cell adhesion molecules (CAMs), Primary immunodeficiency, T cell receptor signaling pathway

Gene Summary: The protein encoded by this gene belongs to the CD28 and CTLA-4 cell-surface receptor family. It forms homodimers and plays an important role in cell-cell signaling, immune responses, and regulation of cell proliferation. [provided by RefSeq, Jul 2008]

Product images:



Circular map for RG207031