

## Product datasheet for **RG207027**

### ASB2 (NM\_016150) Human Tagged ORF Clone

#### Product data:

Product Type:	Expression Plasmids
Product Name:	ASB2 (NM_016150) Human Tagged ORF Clone
Tag:	TurboGFP
Symbol:	ASB2
Synonyms:	ASB-2
Mammalian Cell Selection:	Neomycin
Vector:	pCMV6-AC-GFP (PS100010)
E. coli Selection:	Ampicillin (100 ug/mL)



[View online »](#)

**ORF Nucleotide Sequence:**

>RG207027 representing NM\_016150  
 Red=Cloning site Blue=ORF Green=Tags(s)

TTTTGTAATACGACTCACTATAGGGCGGCCGGAATTCGTCGACTGGATCCGGTACCGAGGAGATCTGCC  
 GCC**CGGATCGCC**

ATGACCCGCTTCTCTATGCAGAGTACTTTCCCTCTTTCACTCTGCTCTGCACCTCCAGGTCCACTG  
 CACCTCCTGAGAGTTCGCCGGCCGGGCCCAATGGGCTTGTCCAAGGGGTATGCAGAAATACAGCAG  
 CAGCTTGTCAAGACCTCCAGCTGGCGCTGCGACCCCTTGATAAAGGCCATCAAGGATGGCGATGAA  
 GAGGCTTGAAGACCATGATCAAGGAAGGGAAGAATCTCGCAGAGCCCAACAAGGAGGGCTGGTGCCGC  
 TGCACGAGGCCGATACTATGGCCAGGTGGGCTGCCTGAAAGTCTGCAGCGAGCGTACCCAGGGACCAT  
 CGACCAGCGCACCTGCAGGAGGAACAGCCGTTTACTTGGCAACGTGCAGGGGCCACCTGGACTGTCTC  
 CTGTCACTGCTCAAGCAGGGGCAGAGCCGACATCTCCAACAAATCCCGAGAGACACCGCTCTACAAAG  
 CCTGCGAGCGCAAGAACGCGGAGGCCGTGAAGATTCTGGTGCAGCACACGCAGACCAACCACCGCTG  
 CAACCGCGGCTGGACCGCTCTGCAGAGTCTGTGTCTCGCAATGACCTGGAGGTCATGCAGATCCTGGTG  
 AGCGGAGGAGCCAAGGTGGAATCCAAGAAGCCTACGGCATCACCCCTTGTTCTGTGGCCGCCAGAGTG  
 GACAGTTGGAGGCCTTGAGGTTCTTAGCCAAGTACGGTGTGACATCAACACGCAGGCCAGCGACACGC  
 GTCTGCCCTCTACGAGGCCTGCAAGAATGAGCATGAGGAGGTGGTGGAGTTTCTGCTGTACAGGGTGCC  
 GACGCCAACAAGACCAACAAGGACGGCTTGCTCCCGCTGCACATCGCCTCCAAGAAGGGCAACTACAGGA  
 TCGTGCAGATGCTGTGCCGGTGACACGCCGACACGCGCATACGCCGTAGCGGCGTCACTCCGCTGCACCT  
 GGGCGCCGAGCGCAACCACGACGAGGTGCTGGAGGCGTGTGAGCGCGCGCTTGCAGTGAACACGCCG  
 CTGGCGCCGAGCGCGCGCCCTCTACGAAGACCGCGCAGCTCCGCGCTGTACTTCGCGGTGGTCAACA  
 ACAACGTGTACGCCACCGAGCTGCTGTGCAACACGGCGCCGACCCCAACCAGCGAGCTATCAGCCCTT  
 GCTCGTGGCCATCCGCCACGGCTGCCTGCGCACAATGCAGCTGCTGTGACCACGGCGCGGAACATCGAC  
 GCCTATATCGCCACGCACCCACCGCTTCCCGCCACCATCATGTTCCGCATGAAGTGCCTGTGCTGCTG  
 TCAAGTTCCTCATGGACCTGGGCTGCGACGGCGAGCCCTGCTTCTCATGCCTCTACGGCAACGGCCCGCA  
 CCCGCCGCCCGCAGCCCTCCAGCAGGTTCAACGACGCGCCCGCGGCCGACAAGGAGCCAGCGTGGTG  
 CAGTTCTGTGAGTTCGTATCTGCCCCAGAGGTGAGCCGCTGGCGGGGCCATCATCGATGTCTCTCTGG  
 ACTACGTGGGCAACGTGCAGCTCTGCTCGCGGCTGAAGGAACACATCGACAGCTTGGAGACTGGCCGT  
 CATCAAGGAGAAGGCAGAACCTCAAGACCTCTGGCTCACCTTGGCCACTGCGGGTTCGAAAGGCCATT  
 GGGAAATACCGTATAAACTCCTAGACACCTTGGCGCTCCAGGCAGGCTGATTAGATACCTGAAATACG  
 AGAACACCCAG

AG**CGGACCG**ACGCGTACGCGGCCGCTCGAG - GFP Tag - GTTTAA

**Protein Sequence:**

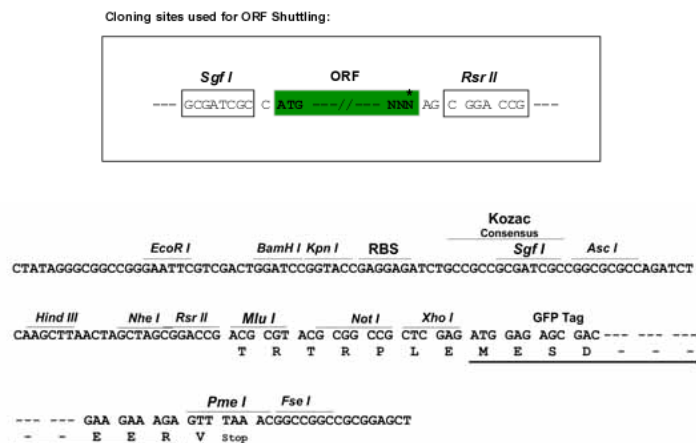
>RG207027 representing NM\_016150  
 Red=Cloning site Green=Tags(s)

MTRFSYAEYFSLFHSCSAPSRSTAPPESSPARAPMGLFQGVMMQKYSSSLFKTSQLAPADPLIKAIKDGE  
 EALKTMIKEGKNAEPNKEGWLPLHEAAYYGQVGLKVLQRAYPGTIDQRTLQEEETAVYLATCRGHLDC  
 LSLQAGAEPDISNKSRETPLYKACERKNAEAVKILVQHNADTNHRCNRGWTALHESVSRNDLEVMQILV  
 SGGAKVESKNAYGITPLFVAAQSGQLEALRFLAKYGADINTQASDNASALYEACKNEHEEVVEFLLSQGA  
 DANKNTKDGLLPLHIASKKGNRYIVQMLLPVTSRTRIRRSVSPHLAAERNHDEVLEALLSARFDVNTPL  
 LAPERARLYEDRRSSALYFAVNNVYATELLQHGADPNRDVISPILLVAIRHGCLRTMQLLLDHGANID  
 AYIATHPTAFPATIMFAMKCLSLKFLMDLGCDGEPFCCLYGNPHTPPAPQPSSRFNDAPAADKEPSV  
 QFCEVSAPEVSRWAGPIIDVLLDYVGNVQLCSRLEKIDSFEDWAVIKEKAEPPLAHLRRLRVRKAI  
 GKYRIKLLDTPPLPGRLLIRYLKYENTQ

SGP**TRRRLE** - GFP Tag - V

**Restriction Sites:**

Sgfl-RsrII

**Cloning Scheme:**


**ACCN:** NM\_016150

**ORF Size:** 1761 bp

**OTI Disclaimer:** The molecular sequence of this clone aligns with the gene accession number as a point of reference only. However, individual transcript sequences of the same gene can differ through naturally occurring variations (e.g. polymorphisms), each with its own valid existence. This clone is substantially in agreement with the reference, but a complete review of all prevailing variants is recommended prior to use. [More info](#)

**OTI Annotation:** This clone was engineered to express the complete ORF with an expression tag. Expression varies depending on the nature of the gene.

**Components:** The ORF clone is ion-exchange column purified and shipped in a 2D barcoded Matrix tube containing 10ug of transfection-ready, dried plasmid DNA (reconstitute with 100 ul of water).

**Reconstitution Method:**

1. Centrifuge at 5,000xg for 5min.
2. Carefully open the tube and add 100ul of sterile water to dissolve the DNA.
3. Close the tube and incubate for 10 minutes at room temperature.
4. Briefly vortex the tube and then do a quick spin (less than 5000xg) to concentrate the liquid at the bottom.
5. Store the suspended plasmid at -20°C. The DNA is stable for at least one year from date of shipping when stored at -20°C.

**RefSeq:** [NM\\_016150.3](#), [NP\\_057234.2](#)

**RefSeq Size:** 2742 bp

**RefSeq ORF:** 1764 bp

**Locus ID:** 51676

**UniProt ID:** [Q96Q27](#)

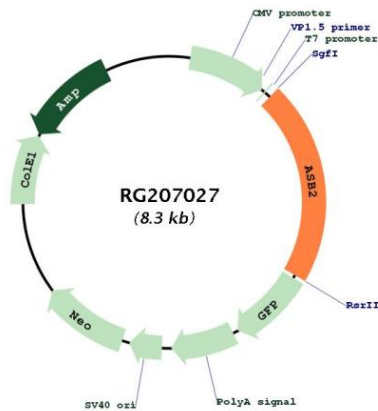
**Cytogenetics:** 14q32.12

**Domains:** SOCS, ANK

**Protein Families:** Druggable Genome

**Gene Summary:** This gene encodes a member of the ankyrin repeat and SOCS box-containing (ASB) protein family. These proteins play a role in protein degradation by coupling suppressor of cytokine signalling (SOCS) proteins with the elongin BC complex. The encoded protein is a subunit of a multimeric E3 ubiquitin ligase complex that mediates the degradation of actin-binding proteins. This gene plays a role in retinoic acid-induced growth inhibition and differentiation of myeloid leukemia cells. Alternatively spliced transcript variants encoding multiple isoforms have been observed for this gene. [provided by RefSeq, Jan 2011]

**Product images:**



Circular map for RG207027