

## Product datasheet for **RG207012**

### TCCR (IL27RA) (NM\_004843) Human Tagged ORF Clone

#### Product data:

Product Type:	Expression Plasmids
Product Name:	TCCR (IL27RA) (NM_004843) Human Tagged ORF Clone
Tag:	TurboGFP
Symbol:	TCCR
Synonyms:	CRL1; IL-27RA; IL27R; TCCR; WSX1; zcytor1
Mammalian Cell Selection:	Neomycin
Vector:	pCMV6-AC-GFP (PS100010)
E. coli Selection:	Ampicillin (100 ug/mL)



[View online »](#)

**ORF Nucleotide Sequence:**

>RG207012 representing NM\_004843  
 Red=Cloning site Blue=ORF Green=Tags(s)

TTTTGTAATACGACTCACTATAGGGCGGCCGGAATTCGTCGACTGGATCCGGTACCGAGGAGATCTGCC  
 GCC**CGGATCGCC**

ATCGGGGAGGCAGGGGCGCCCTTTCTGGCTGTGGCCGTGCCAAGCTGGCGTGCTGCCTCTGTTGT  
 GGGTGCTTTCCAGCGGACGCGTCCCCAGGGCAGCGCCGGCCACTGCAGTGCTACGGAGTTGGACCCTT  
 GGGCGACTTGAAGTCTCGTGGGAGCCTTTGGGGACCTGGGAGCCCCCTCCGAGTTACACCTCCAGAGC  
 CAAAAGTACCGTTCCAACAAAACCCAGACTGTGGCAGTGGCAGCCGACGGAGCTGGGTGGCCATTCCTC  
 GGAACAGCTCACCATGTCTGACAACTCCTTGTCTGGGGCACTAAGGCAGGCCAGCCTCTCTGGCCCC  
 CGTCTTCGTGAACCTAGAAACCCAAATGAAGCCAAACGCCCCCGGCTGGGCCCTGACGTGGACTTTTCC  
 GAGGATGACCCCTGGAGGCCACTGTCCATTGGGCCCCACCTACATGGCCATCTCATAAAGTTCTGATCT  
 GCCAGTCCACTACCGAAGATGTCAGGAGCGGCCTGGACCCTGTGGAACCGGAGCTGAAGACCATAACC  
 CCTGACCCTGTTGAGATCCAAGATTTGGAGCTAGCCACTGGCTACAAAGTGTATGGCCGCTGCCGGATG  
 GAGAAAGAAGAGGATTTGTGGGGCGAGTGGAGCCCCATTTTGTCCCTCCAGACACCGCCTTCTGCTCAA  
 AAGATGTGTGGGTATCAGGGAACCTCTGTGGGACGCTGGAGGAGAGGAACCTTTGCTTCTATGGAAGGC  
 CCCAGGGCCCTGTGTGCAGGTGAGCTACAAAGTCTGGTCTGGGTGGAGGTCGTGAGCTGAGTCCAGAA  
 GGAATTACCTGCTGCTGCCAATTCACAGTGGGGCGGAGTGGGCCAGGGTGTCCGCTGTCAACGCCA  
 CAAGCTGGGAGCCTCTCACCAACCTCTCTTTGGTCTGCTTGGATTACGCTCTGCCCCCGTAGCGTGGC  
 AGTCAGCAGCATCGCTGGGAGCACGGAGCTACTGGTACCTGGCAACCGGGGCTGGGAACCACTGGAG  
 CATGTAGTGGACTGGGCTCGAGATGGGGACCCCTGGAGAACTCACTGGTCCGGCTTCCCCCTGGGA  
 ACCTCAGTCTGTTACCAGGGAATTTCACTGTCCGGTCCCCTATCGAATCACTGTGACCCGAGTCTC  
 TGCTTCAGGCTTGGCCTCTGCATCCTCCGTCTGGGGTTCAGGGAGGAATTAGCACCCCTAGTGGGGCCA  
 ACGCTTTGGCGACTCCAAGATGCCCTCCAGGGACCCCGCCATAGCGTGGGGAGAGGTCCAAGGCACC  
 AGCTTCGAGGCCACCTCACCCACTACACCTTGTGTGCACAGAGTGAACACAGCCCTCCGCTGTCATGAA  
 TGTGAGTGGCAACACACAGAGTGTACCCTGCCTGACCTTCTTTGGGTCCCTGTGAGCTGTGGGTGACA  
 GCATCTACCATCGCTGGACAGGGCCCTCCTGGTCCATCCTCCGGCTTCTTACCAGATAACACCTGA  
 GGTGAAAAGTTCTGCCGGCATCTATTCTTGTGGGGCTGTTCCTGTTGGGGTGTGGCCTGAGCCTGGC  
 CACCTCTGGAAGGTGCTACCACTAAGGCACAAAGTGTGCCCGCTGGGTCTGGGAGAAAGTTCCTGAT  
 CCTGCCAACAGCAGTTCAGGCCAGCCCCACATGGAGCAAGTACCTGAGGCCAGCCCTTGGGGACTTGC  
 CCATCCTGGAAGTGGAGGAGATGGAGCCCCCGCGTTATGGAGTCTCCAGCCCGCCAGGCCACCGC  
 CCCGCTTGACTCTGGGTATGAGAAGCACTTCTGCCACACCTGAGGAGCTGGGCCTTCTGGGGCCCCC  
 AGGCCACAGGTTCTGGCC

AG**CGGACCG**ACGCGTACGCGGCCGCTCGAG - GFP Tag - GTTTAA

**Protein Sequence:**

>RG207012 representing NM\_004843  
 Red=Cloning site Green=Tags(s)

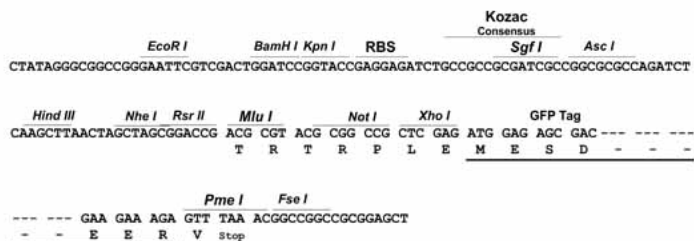
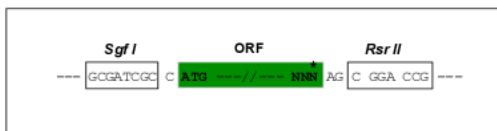
MRGGRGAPFWLWPLPKLALLPLLWVLFQRTRPQGSAGPLQCYGVGPLGDLNCSWEPLGDLGAPSELHLQS  
 QKYRSNKQTVAAGRSWVAIPREQLTMSDKLLVWGKAGQPLWPPVFNLETQMKPNAPRLGPDVDFS  
 EDDPLEATVHWAPPTWPSHKVLICQFHYRRCQEAAWTLLEPELKIPLTPVEIQDLELATGYKVYGRCRM  
 EKEEDLWGEWSPILSFQTPPSAPKDVVWSGNLCGTPGGEEPLLLWKAPGPCVQVSYKVVFWVGGRELSPE  
 GITCCCSLIPSGAEWARVSAVNATSWEPLTNLSLVCLDSASAPRSYAVSSIAGSTELLVTWQPGGEPLE  
 HVVDWARDGDPLEKLNWVRLPPGNLSALLPGNFTVGVVYRITVTAVSASGLASASSVWGFREELAPLVGP  
 TLWRLQDAPPGTPAIWGEVPRHLRGLHLYTLCAQSGTSPSVMNVSGNTQSVTLPLDLPWGPCELWVT  
 ASTIAGQGPPGPIRLHLDPNTRLRWKVLPGILFLWGLFLLGCGLSLATSGRCYHLRHKVLPWWWEKVPD  
 PANSSSGPHMEQVPEAQPLGDLPILEVEEMEPVMESSQPAQATAPLDSGYEKHFLPTPEELGLLGP  
 RPQVLA

SGP**TRRRLE** - GFP Tag - V

Restriction Sites: SgfI-RsrII

Cloning Scheme:

Cloning sites used for ORF Shuttling:



ACCN: NM\_004843

ORF Size: 1908 bp

OTI Disclaimer: The molecular sequence of this clone aligns with the gene accession number as a point of reference only. However, individual transcript sequences of the same gene can differ through naturally occurring variations (e.g. polymorphisms), each with its own valid existence. This clone is substantially in agreement with the reference, but a complete review of all prevailing variants is recommended prior to use. [More info](#)

OTI Annotation: This clone was engineered to express the complete ORF with an expression tag. Expression varies depending on the nature of the gene.

Components: The ORF clone is ion-exchange column purified and shipped in a 2D barcoded Matrix tube containing 10ug of transfection-ready, dried plasmid DNA (reconstitute with 100 ul of water).

Reconstitution Method:

1. Centrifuge at 5,000xg for 5min.
2. Carefully open the tube and add 100ul of sterile water to dissolve the DNA.
3. Close the tube and incubate for 10 minutes at room temperature.
4. Briefly vortex the tube and then do a quick spin (less than 5000xg) to concentrate the liquid at the bottom.
5. Store the suspended plasmid at -20°C. The DNA is stable for at least one year from date of shipping when stored at -20°C.

RefSeq: [NM\\_004843.4](#)

RefSeq Size: 3258 bp

RefSeq ORF: 1911 bp

Locus ID: 9466

UniProt ID: [Q6UWB1](#)

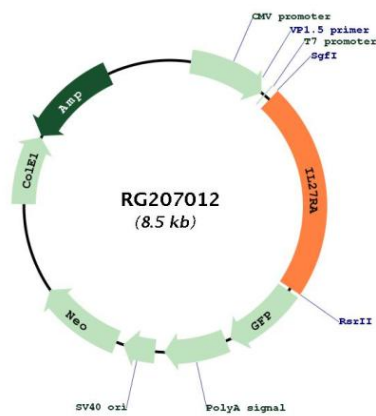
**Cytogenetics:** 19p13.12

**Domains:** FN3

**Protein Families:** Druggable Genome, Transmembrane

**Gene Summary:** In mice, CD4+ helper T-cells differentiate into type 1 (Th1) cells, which are critical for cell-mediated immunity, predominantly under the influence of IL12. Also, IL4 influences their differentiation into type 2 (Th2) cells, which are critical for most antibody responses. Mice deficient in these cytokines, their receptors, or associated transcription factors have impaired, but are not absent of, Th1 or Th2 immune responses. This gene encodes a protein which is similar to the mouse T-cell cytokine receptor Tccr at the amino acid level, and is predicted to be a glycosylated transmembrane protein. [provided by RefSeq, Jul 2008]

**Product images:**



Circular map for RG207012