

## Product datasheet for **RG206997**

### **ATP2C1 (NM\_001001485) Human Tagged ORF Clone**

#### **Product data:**

Product Type:	Expression Plasmids
Product Name:	ATP2C1 (NM_001001485) Human Tagged ORF Clone
Tag:	TurboGFP
Symbol:	ATP2C1
Synonyms:	ATP2C1A; BCPM; HHD; hSPCA1; PMR1; SPCA1
Mammalian Cell Selection:	Neomycin
Vector:	pCMV6-AC-GFP (PS100010)
E. coli Selection:	Ampicillin (100 ug/mL)



[View online »](#)

**ORF Nucleotide Sequence:**

>RG206997 representing NM\_001001485  
 Red=Cloning site Blue=ORF Green=Tags(s)

TTTTGTAATACGACTCACTATAGGGCGGCCGGGAATTCGTCGACTGGATCCGGTACCGAGGAGATCTGCC  
 GCC**GCGATCGCC**

ATGAAGGTTGCACGTTTTCAAAAAATACCTAATGGTGAAAATGAGACAATGATTCCTGTATTGACATCAA  
 AAAAAGCAAGTGAATTACCAAGTCAGTGAAGTTGCAAGCATTCTCCAAGCTGATCTTCAGAATGGTCTAAA  
 CAAATGTGAAGTTAGTCATAGGCGAGCCTTTCATGGCTGGAATGAGTTTGATATTAGTGAAGATGAGCCA  
 CTGTGGAAGAAGTATATTTCTCAGTTTAAAAATCCCTTATTATGCTGCTTCTGGCTTCTGCAGTCATCA  
 GTGTTTTAATGCATCAGTTTGTATGATGCCGTCAGTACTGTGGCAATACTTATCGTTGTTACAGTTGC  
 CTTTGTTCAGGAATATCGTTTCAGAAAAATCTCTGAAGAATTGAGTAACTTGTGCCACCAGAATGCCAT  
 TGTGTGCGTGAAGGAAAATTGGAGCATACACTTGCCCGAGACTTGGTCCAGGTGATACAGTTTGCCTTT  
 CTGTTGGGATAGAGTTCTGCTGACTTACGCTTGTGGAGGCTGTGGATCTTCCATTGATGAGTCCAG  
 CTTGACAGGTGAGACAACGCCTTGTCTAAGGTGACAGCTCCTCAGCCAGCTGCAACTAATGGAGATCTT  
 GCATCGAGAAGTAACATTGCCTTTATGGGAACACTGGTCAGATGTGGCAAAGCAAAGGGTGTGTCATTG  
 GAACAGGAGAAAAATTCTGAATTTGGGGAGGTTTTTAAAAATGATGCAAGCAGAAGAGGCCACAAAAACCC  
 TCTGCAGAAGAGCATGGACCTCTTAGGAAAAACACTTTCCTTTACTCCTTTGGTATAATAGGAATCATC  
 ATGTTGGTTGGCTGGTTACTGGGAAAAGATATCCTGGAATGTTACTATTAGTGAAGTTTGGCTGTAG  
 CAGCAATTCCTGAAGGTCTCCCATTTGGTTCACAGTACGCTAGCTCTGGTGTATGAGAATGGTGAA  
 GAAAAGGGCCATTGTGAAAAAGCTGCCTATTGTTGAACTCTGGGCTGCTGTAATGTGATTTGTTTCAGAT  
 AAAACTGGAACACTGACGAAGAATGAAATGACTGTTACTCACATTTACTTCAGATGGCTGCATGCTG  
 AGTTACTGGAGTTGGCTATAATCAATTTGGGGAAGTATTGTTGATGGTGTGTTGTTTCATGGATTCTA  
 TAACCCAGCTGTTAGCAGAATTGTTGAGGCGGGCTGTGTGTGCAATGATGCTGTAATTAGAAACAATACT  
 CTAATGGGGAAGCCAACAGAAGGGCCCTTAATTGCTCTTGAATGAAGATGGGTCTTGTGACTTCAAC  
 AAGACTACATCAGAAAAGCTGAATACCCTTTAGCTCTGAGCAAAAGTGGATGGCTGTTAAGTGTGTACA  
 CCGAACACAGCAGGACAGACCAGAGATTTGTTTTATGAAAGGTGCTTACGAACAAGTAATTAAGTACTGT  
 ACTACATACCAGAGCAAAGGGCAGACCTTGACACTTACTCAGCAGCAGAGAGATGTGTACCAACAAGAGA  
 AGGCACGCATGGGCTCAGCGGGACTCAGAGTCTTGTCTTGGCTTCTGGTCTGAACTGGGACAGCTGAC  
 ATTTCTTGGCTTGGTGGGAATCATTGATCCACCTAGAAGTGGTGTGAAAGAAGCTGTTACAACACTCATT  
 GCCTCAGGAGTATCAATAAAAAATGATTACTGGAGATTCACAGGAGACTGCAGTTGCAATCGCCAGTCGTC  
 TGGGATTTGATTCCAAAACCTCCAGTCAGTCTCAGGAGAAGAAATAGATGCAATGGATGTTTCAGCAGCT  
 TTCACAAATAGTACCAAAGGTTGCAATTTTACAGAGCTAGCCCAAGGCACAAGATGAAAATTATTAAG  
 TCGCTACAGAAGAACGGTTCAGTTGTAGCCATGACAGGAGATGGAGTAAATGATGCAAGTGTCTGAAGG  
 CTGCAGACATTGGAGTTGCGATGGGCCAGACTGGTACAGATGTTTGCAAAGAGGCAGCAGACATGATCCT  
 AGTGGATGATGATTTTCAAACATAATGTCTGCAATCGAAGAGGGTAAAGGGATTATAATAACATTA  
 AATTTTCGTTAGATTCCAGCTGAGCAGGATATAGCAGCATTAACTTTAATCTCATTGGCTACATTAATGA  
 ACTTTCTAATCCTCTCAATGCCATGCAGATTTGTGGATCAATATTATGATGGATGGACCCCAAGCTCA  
 GAGCCTTGGAGTAGAACCAGTGGATAAAGATGTCAATCGTAAACCTCCTCGCAACTGGAAGACAGCATT  
 TTGACTAAAAACTTGATACTTAAAAACTTGTTCATCAATAATCATTGTTTGTGGGACTTTGTTTGTCT  
 TCTGGCGTGAGCTACGAGACAATGTGATTACACCTCGAGACACAACAATGACCTTACATGCTTTGTGTT  
 TTTTGACATGTTCAATGCACTAAGTTCAGATCCAGACCAAGTCTGTGTTTGTGATTGGACTCTGCAGT  
 AATAGAATGTTTTGCTATGCAGTTCTGGATCCATCATGGGACAATTAAGTTATTTACTTCTCCGC  
 TTCAGAAGGTTTTTCAGACTGAGAGCCTAAGCATACTGGGTCTGGCTCTGGGAGAGGAGTGGACAGCAGC  
 TGGT

**ACGCGTACGCGGCCGCTCGAG** – GFP Tag – **GTTTAA**

**Protein Sequence:** >RG206997 representing NM\_001001485  
 Red=Cloning site Green=Tags(s)

```

MKVARFQKIPNGENETMIPVLTSSKASELPVSEVASILQADLQNLNKCEVSHRRAFHGWNEFDISEDEP
LWKYISQFKNPLIMLLASAVISVLMHQFDDAVSITVAILIVVTVAVFQVEYRSEKSLLEELSKLVPPECH
CVREGKLEHTLARDLVPGDTVCLSVGDRVPADLRLFEAVDLSIDESSLTGETTPCSKVTAPQPAATNGDL
ASRSNIAFMGTLVRCGKAKGVVIGTGENSEFGEVFKMMQAEAPKTPKQKSMDDLKQLSFYSFGIIGII
MLVWGLLGKIDILEMFTTISVSLAVAAIPEGLPIVVTVTLALGVMRMVKKRAIVKKLPIVETLGCCNVICSD
KTGTLTKNEMTVTHIFTS DGLHAEVTGVGYNQFGEVIVDGDVVHGFYNPAVSRIVEAGCVNDVAVIRNNT
LMGKPTGALIALAMKMGDLGLQQDYIRKAEYPFSSSEQKWMVAVKCVHRTQQDRPEICFMKGAYEQVIKYC
TTYQSKGQTLTLTQQQRDVYQEQEKARMSAGLRVLAALASGPELGQLTFLGLVGIIDPRTGVKEAVTTLI
ASGVSIIKMITGDSQETAVAIASRLGLYSKTSQSVSGEEIDAMDVQQLSQIVPKVAVFYRASPRHKMKI IK
SLQKNGSVVAMTGDGVNDAVALKAADIGVAMGQTGTDVCKEAADMILVDDDFQTIMSAIEEGKGIYNNIK
NFVRFQLSTIAALTLISLATLMNFPNPLNAMQILWINIIMDGPPAQLGVEPVDKDVIRKPPRNWKDSI
LTKNLILKILVSSIIIVCGTLFVFWREL RDNVITPRDTTMTFTCFVFFDMFNALSSRSQTKSVFEIGLCS
NRMFCYAVLGSIMGQLLVIFPPLQKVFQTESLSILGLALGEEWTAAG
  
```

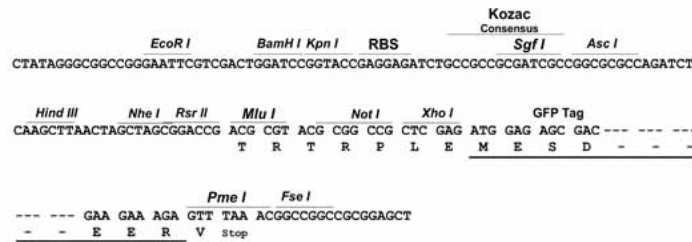
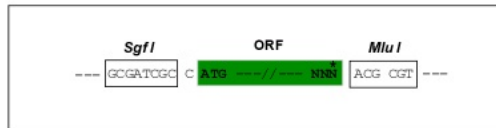
TRTRPLE - GFP Tag - V

**Restriction Sites:**

Sgfl-MluI

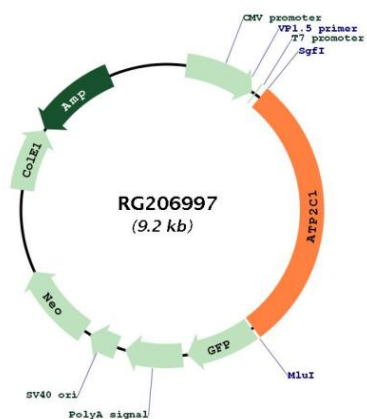
**Cloning Scheme:**

Cloning sites used for ORF Shuttling:



<b>ACCN:</b>	NM_001001485
<b>ORF Size:</b>	2664 bp
<b>OTI Disclaimer:</b>	<p>Due to the inherent nature of this plasmid, standard methods to replicate additional amounts of DNA in E. coli are highly likely to result in mutations and/or rearrangements. Therefore, OriGene does not guarantee the capability to replicate this plasmid DNA. Additional amounts of DNA can be purchased from OriGene with batch-specific, full-sequence verification at a reduced cost. Please contact our customer care team at <a href="mailto:custsupport@origene.com">custsupport@origene.com</a> or by calling 301.340.3188 option 3 for pricing and delivery.</p> <p>The molecular sequence of this clone aligns with the gene accession number as a point of reference only. However, individual transcript sequences of the same gene can differ through naturally occurring variations (e.g. polymorphisms), each with its own valid existence. This clone is substantially in agreement with the reference, but a complete review of all prevailing variants is recommended prior to use. <a href="#">More info</a></p>
<b>OTI Annotation:</b>	This clone was engineered to express the complete ORF with an expression tag. Expression varies depending on the nature of the gene.
<b>Components:</b>	The ORF clone is ion-exchange column purified and shipped in a 2D barcoded Matrix tube containing 10ug of transfection-ready, dried plasmid DNA (reconstitute with 100 ul of water).
<b>Reconstitution Method:</b>	<ol style="list-style-type: none"><li>1. Centrifuge at 5,000xg for 5min.</li><li>2. Carefully open the tube and add 100ul of sterile water to dissolve the DNA.</li><li>3. Close the tube and incubate for 10 minutes at room temperature.</li><li>4. Briefly vortex the tube and then do a quick spin (less than 5000xg) to concentrate the liquid at the bottom.</li><li>5. Store the suspended plasmid at -20°C. The DNA is stable for at least one year from date of shipping when stored at -20°C.</li></ol>
<b>RefSeq:</b>	<a href="#">NM_001001485.2</a>
<b>RefSeq Size:</b>	3389 bp
<b>RefSeq ORF:</b>	2667 bp
<b>Locus ID:</b>	27032
<b>UniProt ID:</b>	<a href="#">P98194</a>
<b>Cytogenetics:</b>	3q22.1
<b>Protein Families:</b>	Druggable Genome, Transmembrane
<b>Gene Summary:</b>	<p>The protein encoded by this gene belongs to the family of P-type cation transport ATPases. This magnesium-dependent enzyme catalyzes the hydrolysis of ATP coupled with the transport of calcium ions. Defects in this gene cause Hailey-Hailey disease, an autosomal dominant disorder. Alternatively spliced transcript variants encoding different isoforms have been identified. [provided by RefSeq, Aug 2011]</p>

Product images:



Circular map for RG206997