

Product datasheet for **RG206993**

Centaurin gamma 1 (AGAP2) (NM_014770) Human Tagged ORF Clone

Product data:

Product Type:	Expression Plasmids
Product Name:	Centaurin gamma 1 (AGAP2) (NM_014770) Human Tagged ORF Clone
Tag:	TurboGFP
Symbol:	AGAP2
Synonyms:	CENTG1; GGAP2; PIKE
Mammalian Cell Selection:	Neomycin
Vector:	pCMV6-AC-GFP (PS100010)
E. coli Selection:	Ampicillin (100 ug/mL)



[View online »](#)

ORF Nucleotide
Sequence:

>RG206993 representing NM_014770
Red=Cloning site Blue=ORF Green=Tags(s)

TTTTGTAATACGACTCACTATAGGGCGGCCGGAATTCGTCGACTGGATCCGGTACCGAGGAGATCTGCC
GCC**CGGATCGCC**

ATGCATGCCAGAGGCAGTTTCGTTGAGCTGCAGTGAGAGCAGAAGTCAGACGACATGAGGTGGCCAAGC
AGGCTCTAAACCGCCTCAGGAAGCTGGCAGAGAGGGTGGACACCCGAACTCCAGGACAGCATCCAGGC
CTCATTGGACAGCATTTCGAGAGGCTGTGATCAATAGCCAGGAATGGACTTTGAGCCGCTCCATTCCTGAA
CTGCGCCTGGGTGTGCTGGGCGATGCCAGGAGTGGGAAGTCATCGCTCATCCACCGATTCTGACTGGCT
CATACCAGGTGCTGGAGAAGACAGAGAGTGAGCAGTACAAGAAAGAAATGTTGGTGGATGGACAGACACA
TCTGGTGTAAATCCGAGAGGAAGCTGGGGCACCTGATGCCAAGTTCTCAGGCTGGCAGATGCTGTGATC
TTCGTCTTCAGCCTGGAGGATGAGAACAGTTTCCAGGCTGTGAGCCGTCTCCATGGGCAGCTGAGTTCCC
TTCGCGGGGAGGACGAGGAGGCTGGCCTTGGCACTGGTGGGACACAAGACAGGATCAGTGTCTCCTC
CCCTCGGGTGGTGGGAGATGCTCGTCCAGAGCTGTGCGCGGACATGAAACGCTGCAGCTACTATGAG
ACTTGTGCAACCTATGGGCTCAATGTGGATCGGGTCTTCCAGGAGGTGGCCAGAAAGGTGGTGACCTTGC
GCAAGCAGCAACAGCTTCTGGCTGCCTGCAAGTCCCTTCCAGCTCCCAAGCCACTCAGCTGCATCCAC
TCCGGTAGCTGGCCAGGCTAGTAACGGGGGCCACACTAGCGACTACTTCTTCCCTCCCGTCTCACCG
AATGTTGGTCACCGGGAGCTCCGAGCCGAGGCAGCTGCAGTGGCTGGATTGAGCACCCAGGGTCCCTGC
ACCGGGCAGCCAAGCGCAGGACCAGCCTTTTTGCGAATCGTCGGGGTAGTGACTCCGAGAAACGAAGCTT
GGATAGTCGGGGAGAGACAACAGGGAGTGGGCGAGCCATCCCCATCAAACAGAGCTTCTACTAAAACGA
AGTGGCAATTCTTGAACAAAGAATGGAAGAAGAAATATGTAACCCTGTCCAGTAATGGCTTCTACTCT
ACCACCCAGTATTAACGATTACATCCACAGTACCCACGCAAGGAGATGGACTTGTCTGCAACAACAGT
CAAAGTCCCGGGCAAGCGGCCCCCGAGGGCCATCTCTGCCTTTGGCCCTCAGCCAGCATTAAACGGGCTC
GTCAAGGACATGAGCACTGTCCAGATGGGTGAAGGCTGGAAGCCACTACTCCCATGCCAAGCCCTAGCC
CCAGCCCCAGTTCCTGCAGCCACCACCAGATCAGACATCCAAACACCTGCTGAAGCCAGACCGGAATTT
GGCCCCAGCCCTCAGCACGGACTGTACCCATCTGGAGACCTGAGCCCCCTGAGTCGGGAACCCCTCCT
TCTCCCATGGTGAAGAAGCAGAGGAGGAAAAAATTGACAAACCATCCAAGACTGAAGGCTCGGCTGGGC
AGGCTGAAGAGGAAAACTTTGGTTCTGATCGTGTCCAGCACGGGTGAGACGTGGCACTTTGAGGCAGC
CAGTTTTGAGGAGCGGGATGCCTGGTCCAGGCCATCGAGAGTCCAGTCCAGTCTGCAATGCTGT
GAGAGCAGCAAGGTCAAGCTGCGCACAGACAGCCAAAGCGAGGCCGTGGCCATCCAGGCATCCGGAACG
CCAAGGGGAATCAATCTGCGTGGACTGCGGGGCCCCAAACCCACGTGGGCCAGCTTGAACCTGGGCGC
CCTCATCTGCATCGAGTGTCTGGCATCCACCGCAACCTGGGCACACACCTGTCCCGCTTCGCTCGCTG
GACTTGGACGACTGGCCACGGGAGCTGACCCTGGTGTGACGGCTATTGGCAACGACACGGCCAACCGCG
TGTGGGAAAGCGACACCGGAGGCCGTGCCAAGCCCTCGCGGGACTCTTCGCGGGAGGAGCGGAGTCTGT
GATTCGCGCAAGTACGAGCAGTACTGTTCTGGCGCCGCTGAGCACCTCGGAGGAGCCGCTGGGCCG
CAGCTGTGGGCCCGCTGACAGGCCAGGACGTGGCTACCGTTCCTGCTTTTGGCCATGCGCGACAG
GGCCGCTCGACACCAGCGTAGAGGACCCACAGTGCCTCCCCACTCCACTGGCGGCCGAGCTCGCCCA
CGTCGTATCACGCAACTGCTGCTGTGGTACGGCGCGGACGTGGCGGCCGCTGACGCCAGGGCCGCAAG
GCGCTGTTCTACGCCCGCAGGCTGGAAGCCAGCTGTGCGCCGACATCCTTCTCCAGCAGGCTGCCCG
GTGAGGGCGCAGCGCGGCCACCAGCCAGCGGCCACCAGCCAGCATCACCGCCAGCCAGCCAGCC
CCGCCCGGAGCAGCGCCGCTAGCGTGGGCCGCGCCAGCCCCGTTGCGCTGGTA

ACGGTACGCGGCCGCTCGAG - GFP Tag - GTTAA

Protein Sequence: >RG206993 representing NM_014770
Red=Cloning site Green=Tags(s)

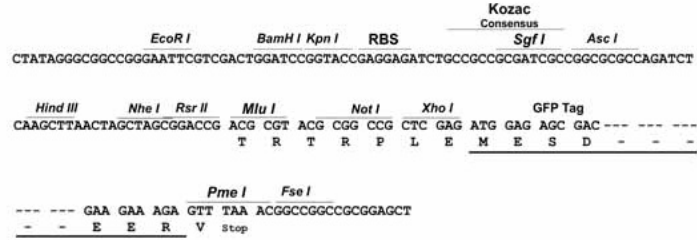
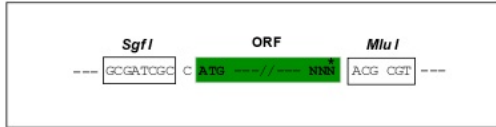
MHAQRQFVVAAVRAEVRREHAVAKQALNRLRKLAEVDDPELQDSIQASLDSIREAVINSQEWTLRSRIPE
LRLGVLGDARSGKSSLIHRFLTGSYQVLEKTESEYKKEMLVDGQTHLVLIREEAGAPDAKFSGWADAVI
FVFSLEDENSFQAVSRLHGQLSSLRGEGRGGLALALVGTQDRISASSPRVVGARARALCADMKRCSYYE
TCATYGLNVDVRFQEVAKVVTLRKQQQLLAACKSLPSSPSHSAASTPVAGQASNGGHTSDYSSSLPSSP
NVGHRELRAEAAAVAGLSTPGSLHRAAKRRTSLFANRRGSDSEKRSLDSRGETTGSGRAIPIKQSFLLKR
SGNSLNKEWKKKYVTLSSNGFLLYHPSINDYIHSTHGKEMDLLRTTVKVPGRPPRAISAFGPSASINGL
VKDMSTVQMGEGLEATTMPSPSPSSSLQPPDQTSKHLKPDRLARALSTDCTPSGDLSPLSREPPP
SPMVKKQRRKLTTPSKTEGSAGQAEENFEFLIVSSTGQWHFEAASFEERDAWVQAIESQILASLQCC
ESSKVKLRTDSQSEAVAIQAIRNAKNSICVDCGAPNPTWASNLGALICIECGIHRNLGTHLSRVRS
DLDDWPRELTLVLTAINDTANRVWESDTRGRAKPSRDSSREERESWIRAKYEQLLFLAPLSTSEEPLGR
QLWAAVQAQDVATVLLLLAHARHGPLDTSVEDPQLRSPLHLAAELAHVITQLLLWYGADVAARDAQGR
ALFYARQAGSQLCADILLQHGPCGEGGSAATTPSAATTPSITATPSPRRRSSAASVGRADAPVALV

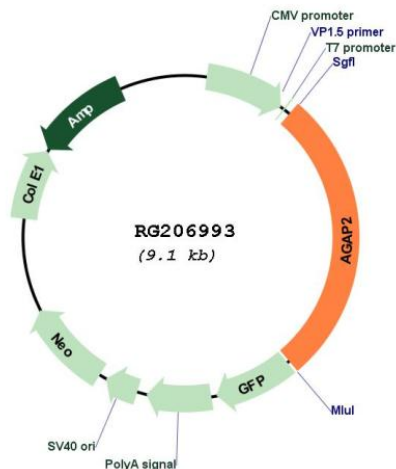
TRTRPLE - GFP Tag - V

Restriction Sites: SgfI-MluI

Cloning Scheme:

Cloning sites used for ORF Shutting:



Plasmid Map:


ACCN: NM_014770

ORF Size: 2508 bp

OTI Disclaimer: Due to the inherent nature of this plasmid, standard methods to replicate additional amounts of DNA in *E. coli* are highly likely to result in mutations and/or rearrangements. Therefore, OriGene does not guarantee the capability to replicate this plasmid DNA. Additional amounts of DNA can be purchased from OriGene with batch-specific, full-sequence verification at a reduced cost. Please contact our customer care team at custsupport@origene.com or by calling 301.340.3188 option 3 for pricing and delivery.

The molecular sequence of this clone aligns with the gene accession number as a point of reference only. However, individual transcript sequences of the same gene can differ through naturally occurring variations (e.g. polymorphisms), each with its own valid existence. This clone is substantially in agreement with the reference, but a complete review of all prevailing variants is recommended prior to use. [More info](#)

OTI Annotation: This clone was engineered to express the complete ORF with an expression tag. Expression varies depending on the nature of the gene.

Components: The ORF clone is ion-exchange column purified and shipped in a 2D barcoded Matrix tube containing 10ug of transfection-ready, dried plasmid DNA (reconstitute with 100 ul of water).

Reconstitution Method:

1. Centrifuge at 5,000xg for 5min.
2. Carefully open the tube and add 100ul of sterile water to dissolve the DNA.
3. Close the tube and incubate for 10 minutes at room temperature.
4. Briefly vortex the tube and then do a quick spin (less than 5000xg) to concentrate the liquid at the bottom.
5. Store the suspended plasmid at -20°C. The DNA is stable for at least one year from date of shipping when stored at -20°C.

RefSeq: [NM_014770.2](#), [NP_055585.1](#)

RefSeq Size: 3938 bp

RefSeq ORF: 2511 bp

Locus ID: 116986

UniProt ID: [Q99490](#)

Cytogenetics: 12q14.1

Domains: ArfGap, PH, ANK, RAS, RAB

Protein Pathways: Endocytosis

Gene Summary: The protein encoded by this gene belongs to the centaurin gamma-like family. It mediates anti-apoptotic effects of nerve growth factor by activating nuclear phosphoinositide 3-kinase. It is overexpressed in cancer cells, and promotes cancer cell invasion. Alternatively spliced transcript variants encoding different isoforms have been described for this gene. [provided by RefSeq, Aug 2011]