

Product datasheet for **RG206992**

TMEM63A (NM_014698) Human Tagged ORF Clone

Product data:

Product Type:	Expression Plasmids
Product Name:	TMEM63A (NM_014698) Human Tagged ORF Clone
Tag:	TurboGFP
Symbol:	TMEM63A
Synonyms:	HLD19; KIAA0792
Mammalian Cell Selection:	Neomycin
Vector:	pCMV6-AC-GFP (PS100010)
E. coli Selection:	Ampicillin (100 ug/mL)



[View online »](#)

ORF Nucleotide Sequence:

>RG206992 representing NM_014698
 Red=Cloning site Blue=ORF Green=Tags(s)

TTTTGTAATACGACTCACTATAGGGCGGCCGGGAATTCGTCGACTGGATCCGGTACCGAGGAGATCTGCC
 GCC**CGGATCGCC**

ATGATGGACTCCCCGTTCTGGAGCTGTGGCAGTCCAAGGCAGTGTCCATCAGGGAGCAGCTGGGACTCG
 GGGACCGGCCAACGACTCCTATTGCTACAACCTCGGCCAAAAACAGCACCGTGCTCCAGGGGTCACCTT
 TGGTGGCATCCCCACTGTCTGCTCATAGACGTGAGCTGCTTCTGTTCTTAATCTTGGTGTCTTATT
 ATAAGAAGAAGATTCTGGGACTATGGCCGATTGCCCTGGTGTGAGAAGCAGACAGCGAGTCCAGATTTT
 AGAGATTGTATCGACTTCTCTCAGGTCAACAAGACTTTGAAAATGAGCTGGGATGCTGTCCCTGGCT
 GACTGCCATCTTCGCTGCATGATGACCAGATCTGGAATGGTGTGGGAGGACGCCATCCACTACCTG
 TCCTCCAGAGGCACATCATCTTCTGTTGGTGGTGGTCACTTTTTGTCCTGTGTGCATCCTGCCTG
 TCAACCTCTCAGGGGACTTGTGGACAAAGACCCGTATAGTTTTGGGAGGACAACAATAGCAAACCTACA
 GACTGACAATGACCTCCTTTGGCTGCACACCATCTTTGCTGTCACTTACCTCTTCTCAGTGGGTTTC
 ATGCGGCCACCACACTCAGTCCATTAAGTACAAAGAGGAGAACCTGGTGGGCGGACCCCTGTTTCATCACAG
 GACTCCCCAGAGATGCCAGGAAGGAGACTGTGGAGAGCCACTTCCGGGACCGGTATCCCACGTGTGAGGT
 GGTGTGATGTGAGCTGTGCTACAACGTGGCCAACTGATCTACCTGTGCAAGGAGAAAAAGAAGACTGAG
 AAGAGCCTGACCTATTACACAAACCTGCAGGTGAAGACAGGCCAGCGGACCCCTCAACCCCAAGCCCT
 GTGGCCAGTTTTGCTGCTGTGAAGTGTGGGCTGTGAGTGGGAAGACGCCATCTTACTACACAGGAT
 GAAGGACAGGCTGCTGGAGAGGATCACAGAGGAAGAAGCCACGTCCAGGACCAGCCCTGGGAATGGCC
 TTCGTACCTTCCAGGAGAAGTCCATGGCCACCTACATCTGAAAGATTTCAATGCCTCAAGTGGCAGT
 CACCTTTGCTGCTGACCCTGAGGACATCTGCTGGAAGAACCTCTCTATCCAGGGCCTCCGCTGGTGGCTA
 CAGTGGCTGGGCATCAACTTACCCCTTCTCCTGGGCTATTTTTCTGACCACACCCTCCATCATCTGT
 CCACCATGGACAAGTTTAAATGTCACCAAACCCATCCATGCGCTGAATAACCCGATCATCAGCCAGTTCTT
 CCCCACCCTCCTGCTCTGGTCTTCTCGGCCCTGCTCCCCTCCATTGTCTACTACTCTACACTGCTGGAG
 TCTCACTGGACCAAGTCGGGGAAAACCAGATCATGATGACCAAAGTCTACATATTCTTGATCTTCATGG
 TGCTGATCCTGCCCTCCCTGGTCTCACCAGTCTAGATTTTTTCTTCCGGTGGCTCTTTGACAAAACCTC
 CTCGGAGGCTCCATCAGGTTGGAGTGCCTTCTGCTGACCAGGGTGCCTTCTTTGTGAAGTATGTC
 ATCGCCTCGGCCTTCATCGGCAATGGCATGGAGCTGCTGCGGCTGCCAGGTCTCATCCTCTATACCTTCC
 GCATGATCATGGCCAAGACGGCTGCTGACCGCAGGAATGTCAAGCAGAACCAGGCCTCCAGTACGAGTT
 TGGAGCCATGTATGCATGGATGTGTGTCTTCACTGTGATCGTGGCCTACAGCATCACTTGTCCCATC
 ATCGCGCCATTTGGCCTCATCTACATCCTGCTCAAGCACATGGTGGACCGGCACAACCTCTACTTCGTCT
 ACCTCCCAGCCAAGTGGAGAAGGGATCCACTTTGCCGCTGTGAACCAGGCCTTGGCAGCCCCATCCT
 GTGCCTCTTCTGGCTCTACTTCTTTCTTCTGCGCCTGGGTATGAAGGCCCCCGCCACTCTGTTACCC
 TTCCTGGTGTGCTGCTCACCATCCTGGTCTGCTGGCTCACACCTGCTTTGGATGCTTCAAGCACCTCA
 GCCCTCTGAACACAAAACAGAAGAGCCTGCAAGTGACAAAGGAAGTGAAGCAGAGGCCACATGCCCC
 ACCGTTACACCCTACGTGCCTCGGATTCTGAACGGCTTGGCCTCGGAGAGGACAGCACTGTCTCCGCG
 CAGCAGCAGCAGCAGACCTATGGTGCCATCCACAACATCAGCGGGACTATCCCTGGACAGTGTCTGGCGC
 AGAGCGCCACGGCAGTGTGGCTGCTGCCCCCAGGAGGCC

AG**CGGACCG**ACGCGTACGCGGCCGCTCGAG - GFP Tag - GTTTAA

Protein Sequence: >RG206992 representing NM_014698
Red=Cloning site Green=Tags(s)

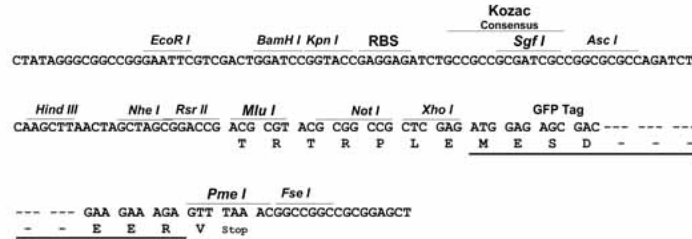
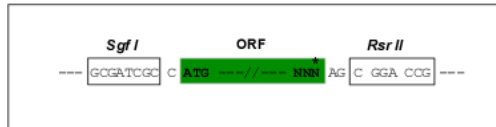
MMDSPFLELWQSKAVSIREQLGLGDRPNDSYCYNSAKNSTVLQGVTGGIPTVLLIDVSCFLFLILVFSI
IRRRFWDYGRIALVSEADSESRFQRLSSTSSSGQDFENELGCCPWLTAIFRLHDDQILEWCGEDAIHYL
SFQRHIIIFLLVVVSFLSLCVILPVNLSGDLLDKDPYSFGRTTIANLQTDNDLLWLHTIFAVIYFLTVGF
MRHHTQSIKYKEENLVRRTLFITGLPRDARKETVESHRDAYPTCEVVDVQLCYNVAKLIYLCKEKKKTE
KSLTYYTNLQVKTGQRTLINPKPCGQFCCCEVLGCEWEDAISSYYTRMKDRLLERITEEERHVQDQPLGMA
FVTFQEKS MATYILKDFNACKCQSLQCKGEPQPSHSRELYTSKWTVTFAADPEDICWKNLSIQGLRWL
QWLGINF TLFGLFFLTTPSII LSTMDKFNVTKPIHALNNPIISQFFPTLLLWFSALLPSIVYYSTLLE
SHWTKSGENQIMMTKVYIFLIFMVLILPSLGLTSLDFFFRWLFDKTSSEASIRLECVFLPDQGAFVYNYV
IASAFIGNGMELLRLPGLILYTFRMIMAKTAADRRNVKQNAFQYEFGAMYAWMLCVFTVIVAYSITCPI
IAPFGLIYILLKHMVDRHNLVYVYLPKLEKGIHFAAVNQALAAPILCLFWLYFFSFLRLGMKAPATLFT
FLVLLL TILVCLAHTCFGCFKHLSP LNYKTEEPASDKGSEAEAHMPPPF TPYVPRILNGLASERTALSPQ
QQQQQTYGAIHNISGTIPGQCLAQSATGSVAAAAPQEA

SGP TRRRLE - GFP Tag - V

Restriction Sites: Sgfl-RsrII

Cloning Scheme:

Cloning sites used for ORF Shuttling:


ACCN: NM_014698

ORF Size: 2421 bp

OTI Disclaimer: The molecular sequence of this clone aligns with the gene accession number as a point of reference only. However, individual transcript sequences of the same gene can differ through naturally occurring variations (e.g. polymorphisms), each with its own valid existence. This clone is substantially in agreement with the reference, but a complete review of all prevailing variants is recommended prior to use. [More info](#)
OTI Annotation: This clone was engineered to express the complete ORF with an expression tag. Expression varies depending on the nature of the gene.

Components: The ORF clone is ion-exchange column purified and shipped in a 2D barcoded Matrix tube containing 10ug of transfection-ready, dried plasmid DNA (reconstitute with 100 ul of water).

Reconstitution Method:

1. Centrifuge at 5,000xg for 5min.
2. Carefully open the tube and add 100ul of sterile water to dissolve the DNA.
3. Close the tube and incubate for 10 minutes at room temperature.
4. Briefly vortex the tube and then do a quick spin (less than 5000xg) to concentrate the liquid at the bottom.
5. Store the suspended plasmid at -20°C. The DNA is stable for at least one year from date of shipping when stored at -20°C.

RefSeq: [NM_014698.3](#)

RefSeq Size: 4074 bp

RefSeq ORF: 2424 bp

Locus ID: 9725

UniProt ID: [O94886](#)

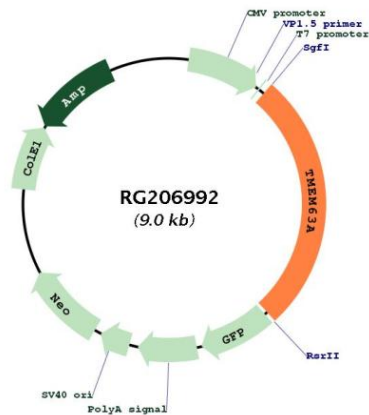
Cytogenetics: 1q42.12

Domains: DUF221

Protein Families: Transmembrane

Gene Summary: Acts as an osmosensitive calcium-permeable cation channel.[UniProtKB/Swiss-Prot Function]

Product images:



Circular map for RG206992