

Product datasheet for **RG206975**

ZNF34 (NM_030580) Human Tagged ORF Clone

Product data:

Product Type:	Expression Plasmids
Product Name:	ZNF34 (NM_030580) Human Tagged ORF Clone
Tag:	TurboGFP
Symbol:	ZNF34
Synonyms:	KOX32
Mammalian Cell Selection:	Neomycin
Vector:	pCMV6-AC-GFP (PS100010)
E. coli Selection:	Ampicillin (100 ug/mL)



[View online »](#)

ORF Nucleotide Sequence:

>RG206975 representing NM_030580
 Red=Cloning site Blue=ORF Green=Tags(s)

TTTTGTAATACGACTCACTATAGGGCGGCCGGAATTCGTCGACTGGATCCGGTACCGAGGAGATCTGCC
 GCC**CGCATCGCC**

ATGATGGTAGGGGTGCCCTGAGACCCCATGCAGCCACCCTTGGGATGTATTAGCTGGCTCGGTGGCA
 GATGGGTCAAGCCACCCACTGTGCTGCTGCCTTTAGCATGCTTCTGCTGCCTCCCCGCCCTACCGCCC
 ACTCTGGACCACACCTGGGCTGCAGCAGTCCCTGTCAATCCAGGCCGAGGTGACCTTCGAGGACGTGGCT
 GTGTACCTCTCCCGGAGGAATGGGGCCGCTGGGCCCTGCTCAGAGGGGCTCTACAGGGACGTGATGC
 TGGAGACCTACGGGAACCTAGTCTCACTGGCTCTGGGACCAGAAGCTGAGTACAAGGAGTTGACTTCACA
 GGAGACATTTGGTGAGGAAGATCCCAGGGATCTGAGCCAGTAGAAGCCTGTGACCACATCAGTAAGTCA
 GAGGGGAGCTGGAAAAGCTAGTGGAGCAGAGAGGCCCCAGGGCAGTCACACTGACCAACGGGGAGAGCA
 GCAGGGAGTCTGGGGAAACCTCAGTTGCTGTCAAGACCTGTTCTGATCAGAGACCTCACAAATGTGA
 TATATGTGAGCAAAGTTTGAACAGAGATCATATCTCAACAACCATAAGCGTGTACACAGGTCAAAAAA
 ACAAATACAGTTCGTAACCTCTGGGAAATCTTCAGTGCAAACCTTAGTTGTTAAAGAAGATCAGAAAAATC
 CTAAGTGGAAAAAATTGCATTATTGCAGTACTGTGGGAAAAACATTCAGGTACAGTGCCAACTTGTCAA
 GCATCAGCGGCTTCACTGAAGAGAAGCCCTACAAATGTGATGAGTGTGGGAAAGCCTTCAGCCAGAGC
 TGCGAGTTCATCAATCACCGAAGGATGCACTCAGGAGAGATCCCTACCGGTGTGACGAGTGTGGGAAGA
 CATTACCCCGGAGGCCAACCTCATGAAGCACCAGAGGATTCACTGGGAGAAACCTACAAGTGTGG
 GGAGTGTGGGAAGCACTTAGCGCCTACTCTCCCTGATTTATCACCAGAGAATCCACCCGGAGAGAAA
 CCCTATAAATGTAATGACTGCGGAAAGCCTTCAGTGATGGCTCAATCCTATCCGACATCGTCGGACTC
 ACACCGGAGAGAAGCCATTTGAGTGAAGGAATGTGGCAAAGGCTTTACACAAAGTTCTAACCTTATCCA
 ACATCAGAGAATTCACACTGGAGAGAAACCTATAAATGTAATGAATGTGAGAAAAGCTTTCAATCAAAAA
 ACCAAACTCGTGAACATCAGAGAAGCCACACTGGAGAGAAGCCCTATGAATGCAATGACTGTGGCAAAG
 TTTTCAGCCAAAGCACACCTCATCCAGCACCAGAGAATCCACACAGGAGAGAAGCCCTACAAGTGCAG
 CGAGTGTGGGAAGCCTTCCACAACAGTCCAGACTCATCCACCACCAGAGGCTGCACCACGGAGAGAAA
 CCCTACAGATGCAGCGATTGCAAGAAAGCCTTCAGCCAGAGCACGTAATTGATTACGACCCGGAGGATCC
 ACACCGGGGAGAAGCCCTACAAGTGCAGCGAGTGTGGGAAGCCTTCCGGCACAGTTCCAACATGTGTCA
 GCATCAGCGGATTCACCTCCGGGAGGACTTCTCCATG

ACGCGTACGCGGCCGCTCGAG - GFP Tag - GTTTAA

Protein Sequence:

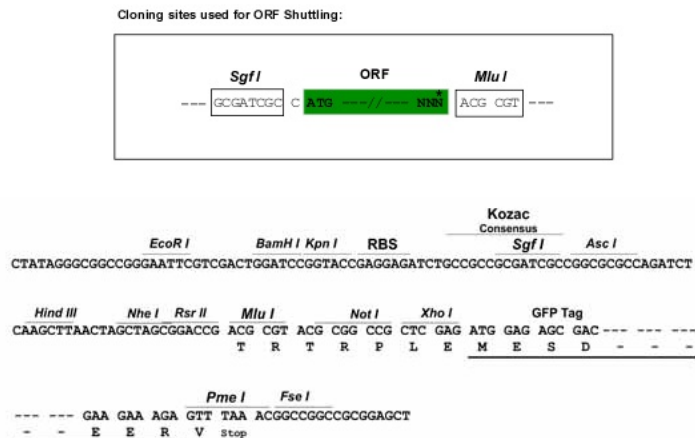
>RG206975 representing NM_030580
 Red=Cloning site Green=Tags(s)

MMVGVALRPPCSHPLGCIISWLGRRVVRPPTVLLPLACFCCLPAPTSPLWTPGLQQSLSFQAEVTFEDVA
 VYLSREEWGRLGPAQRGLYRDVMLETYGNLVSLALGTRTEYKELTSQETFGEEDPQGSEPEACDHISKS
 EGSLEKLVEQRGPRAVTLTNGESSRESGNLRLLSRPVPDQRPHKCDICEQSFEQRSYLNHHRVHRSK
 TNTVRSNGEIFSANLVKEDQKIPTGKLLHYCSYCGKTFRYSANLVKHQRLHTEEKPYKDCGKAFSQS
 CEFINHRMHSGEIPYRCDECGKTFTRRPNLMKHQRIHTGEKPYKCGECGKHFSAYSYL IYHQR IHTGEK
 PYKNDGKAFSDGSILIRHRRHTGEKPFCKEKGKFTQSSNL IYHQR IHTGEKPYKNECEKAFIQK
 TKLVEHQRSHTEKPYECNDGKVFVSQSTHL IYHQR IHTGEKPYKCECGKAFHNSRL IHHQRLHHGEK
 PYRCDCKKAFSSTYL IYHRR IHTGEKPYKCECGKAFRHSNMCQHQR IHLREDFSM

TRTRPLE - GFP Tag - V

Restriction Sites:

Sgfl-Mlul

Cloning Scheme:


ACCN: NM_030580

ORF Size: 1647 bp

OTI Disclaimer: The molecular sequence of this clone aligns with the gene accession number as a point of reference only. However, individual transcript sequences of the same gene can differ through naturally occurring variations (e.g. polymorphisms), each with its own valid existence. This clone is substantially in agreement with the reference, but a complete review of all prevailing variants is recommended prior to use. [More info](#)

OTI Annotation: This clone was engineered to express the complete ORF with an expression tag. Expression varies depending on the nature of the gene.

Components: The ORF clone is ion-exchange column purified and shipped in a 2D barcoded Matrix tube containing 10ug of transfection-ready, dried plasmid DNA (reconstitute with 100 ul of water).

Reconstitution Method:

1. Centrifuge at 5,000xg for 5min.
2. Carefully open the tube and add 100ul of sterile water to dissolve the DNA.
3. Close the tube and incubate for 10 minutes at room temperature.
4. Briefly vortex the tube and then do a quick spin (less than 5000xg) to concentrate the liquid at the bottom.
5. Store the suspended plasmid at -20°C. The DNA is stable for at least one year from date of shipping when stored at -20°C.

RefSeq: [NM_030580.2](#), [NP_085057.2](#)

RefSeq Size: 1943 bp

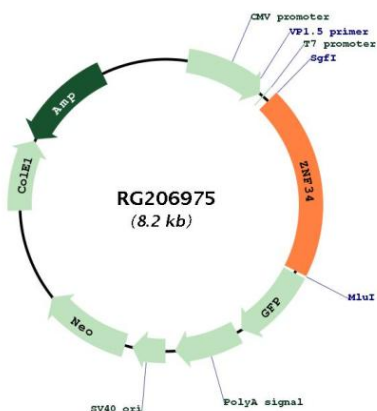
RefSeq ORF: 1683 bp

Locus ID: 80778

UniProt ID: [Q8IZ26](#)

Cytogenetics: 8q24.3
Domains: KRAB, zf-C2H2
Protein Families: Transcription Factors
Gene Summary: May be involved in transcriptional regulation.[UniProtKB/Swiss-Prot Function]

Product images:



Circular map for RG206975