

Product datasheet for **RG206974**

TORC1 (CRTC1) (NM_015321) Human Tagged ORF Clone

Product data:

Product Type:	Expression Plasmids
Product Name:	TORC1 (CRTC1) (NM_015321) Human Tagged ORF Clone
Tag:	TurboGFP
Symbol:	CRTC1
Synonyms:	Mam-2; MAML2; MECT1; TORC-1; TORC1; WAMTP1
Mammalian Cell Selection:	Neomycin
Vector:	pCMV6-AC-GFP (PS100010)
E. coli Selection:	Ampicillin (100 ug/mL)



[View online »](#)

ORF Nucleotide Sequence:

>RG206974 representing NM_015321
 Red=Cloning site Blue=ORF Green=Tags(s)

TTTTGTAATACGACTCACTATAGGGCGGCCGGAATTCGTCGACTGGATCCGGTACCGAGGAGATCTGCC
 GCC**CGATCGCC**

ATGGCGACTTCGAACAATCCGCGGAAATTCAGCGAGAAGATCGCGCTGCACAATCAGAAGCAGGCGGAGG
 AGACGGCGGCTTCGAGGAGGTCATGAAGGACCTGAGCCTGACGCGGGCCGCGCGCTCCAGCTCCAGAA
 ATCCCAGTACCTGCAACTGGGCCCCAGCCGAGGCCAGTACTATGGCGGGTCCCTGCCCAACGTGAACCGAG
 ATCGGGAGTGGCACCATGGACCTGCCCTTCAGACCCCTTCCAATCCTCGGGCTGGACACCAGCCGGA
 CCACCCGGCACCATGGGCTGGTGGACAGGGTGTACCGGGAGCGTGGCCGGCTCGGCTCCACACCCGCCG
 GCCCTGTCACTGGACAAACACGGACGGCAGGCCGACAGCTGCCCTATGGCACCATGTACTCTCACCA
 CCCCGGGACACCAGCTGGAGAAGGACCAATTCTGACTCCGCCCTGCACCAGACACAATGACGCCACCGC
 AGCCAGAATCCTTAGCAGTGGGTCCAGGACGTGCACCAGAAAAGAGTCTTACTGTTAACAGTCCCAGG
 AATGGAAGAGACCACATCAGAGGCAGACAAAACCTTTCCAAGCAAGCATGGGACACCAAGAAGACGGGG
 TCAGGCCCAAGTCTGTGAGGTCGCCGAATCAACATCTCCCGTCTGCCGACCAGGAAAACACTACAG
 CCCTGATCCCGCCACCCACAACACAGGGGGTCCCTGCCCGACCTGACCAACATCCACTTCCCCTCCCC
 GCTCCCGACCCGCTGGACCCCGAGGAGCCACCTTCCCTGCACTGAGCAGCTCCAGCAGCACCGGCAAC
 CTCGCGGCCAACCTGACGCACCTGGGCATCGGTGGCGCCGCCAGGGAATGAGCACACCTGGCTCCTCTC
 CACAGCACCGCCAGCTGGCGTCAAGCCCTGTCCCTGAGCACAGAGGCAAGGCGTCAAGGACGATCGCC
 CGCCCTGTCCCGCTGTCAACCATCACTCAGGCTGTAGCCATGGACGCCCTGTCTCTGGAGCAGCAGCTG
 CCTACGCCTTCTTACCAGGGCGGCTCCAGCAGCCACCGCCGAGCCCGCCAGCCCGCCGCTGCTGCTC
 CACCCCGCTCCAGCAGCCACCACCCCGCCACCCACAGGCGCCCGTCCGCTGCCCTGGTGGCC
 CCTGTTGCCAGCGCCAGCCTGACTCGTGGGCCACAGCCGCCCGCTTGCAGTACCGGTACCGTCCCTCT
 TCCCCAGTCCCCCAGAGAACCCTGGCCAGCCATCGATGGGATCGACATCGCTCGCGCCGGCTC
 TGCAGCAGTACCGCACTAGCGCCGGTCCCGGCCAACAGTCTCCACCTCGCCAGTCTCCAATCAAGG
 CTTCTCCCGAGGAGCTCCCGCAACACTTCCACCCTGGCAGCGTGTGGGGACGCGTACTATGAG
 CAGCAGATGGCGGCCAGGAGGCAATGCTCTGTCCACCAGCTGGAGCAGTTCAACATGATGGAGAACG
 CCATCAGTCCAGCAGCCTGTACAGCCCGGCTCCACTCACTACTCGCAGGCGCCATGATGGGCT
 CACGGGCAGCCAGGAGCCTGCCGACTCGCAGCAACTGGGATACGCCAGCCACAGTGGCATCCCCAAC
 ATCATCTCACAGTGACAGGAGTCCCCCCCCAGCCTCTCTAAAGAACTGACCAGTCTCTGGCCGGGG
 TCGGCGAGCTCAGCTTCCACTCCGACAGCCAGTTCCCTTGACGAACTCAAGATCGACCCCTGACCT
 CGACGGACTGCACATGCTCAACGACCCGACATGGTTCTGGCCGACCCAGCCACCAGGACACTTCCGG
 ATGGACCGCCTG

AG**CGGACCG**ACGCGTACGCGGCCGCTCGAG – GFP Tag – GTTTAA

Protein Sequence:

>RG206974 representing NM_015321
 Red=Cloning site Green=Tags(s)

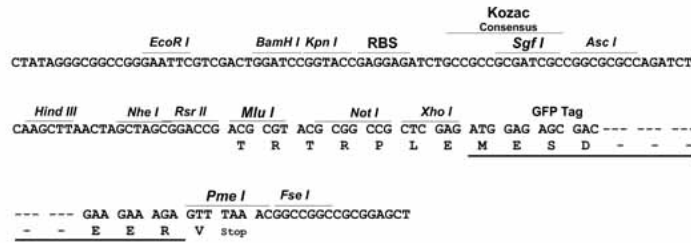
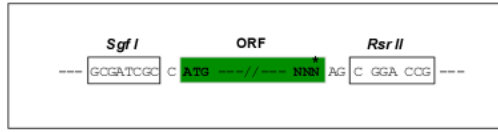
MATSNPRKFSEKIALHNQKQAEETAFAEEVMKDLSLTRAARLQLQKSQYLQLGPSRQYYGGSLPNVNO
 IGSMTDLPFQTPFQSSGLDTSRTTRHHGLVDRVYRERGRGSPHRRPLSVDKHGRQADSCPYGTMYS
 PADTSWRRNTNSDLSALHQSTMTPTQPESSSGSQDVHQKRVLLLTVPGMEETTSEADKNLSKQAWDTKKTG
 SRPKSCEVPGINIFPSADQENTTALIPATHNTGGSLPDLTNIHFPSPLPTPLDPEEPTFPALSSSSSTGN
 LAANLTHLIGGAGQGMSTPGSSPQHRPAGVSPLSLSTEARRQASPALSPLSPITQAVAMDALSLEQQL
 PYAFFTQAGSQPPPPQPPPPPPASQPPPPPPQAPVRLPPGGPLLPSASLTRGPQPPPLAVTPVSS
 LPQSPPENPGQPSMGIDIASAPALQQYRTSAGSPANQSPTSPVSNQGFSPGSSPQHTSTLGSVFGDAYYE
 QQMAARQANALSHQLEQFNMMENAISSSSLYSPGSLNYSQAAMMGLTGSHGSLPDSQQLGYASHSGIPN
 IILTVTGESPPSLSKELTSSLAGVGDVFSDFSQFPLDELKIDPLTLDGLHMLNDPDMVLADPATEDFTF
 MDRL

SGP**TRRRLE** – GFP Tag – V

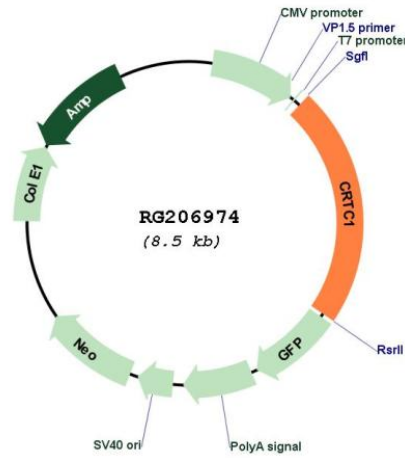
Restriction Sites: SgfI-RsrII

Cloning Scheme:

Cloning sites used for ORF Shuttling:



Plasmid Map:



ACCN: NM_015321

ORF Size: 1902 bp

OTI Disclaimer:	The molecular sequence of this clone aligns with the gene accession number as a point of reference only. However, individual transcript sequences of the same gene can differ through naturally occurring variations (e.g. polymorphisms), each with its own valid existence. This clone is substantially in agreement with the reference, but a complete review of all prevailing variants is recommended prior to use. More info
OTI Annotation:	This clone was engineered to express the complete ORF with an expression tag. Expression varies depending on the nature of the gene.
Components:	The ORF clone is ion-exchange column purified and shipped in a 2D barcoded Matrix tube containing 10ug of transfection-ready, dried plasmid DNA (reconstitute with 100 ul of water).
Reconstitution Method:	<ol style="list-style-type: none">1. Centrifuge at 5,000xg for 5min.2. Carefully open the tube and add 100ul of sterile water to dissolve the DNA.3. Close the tube and incubate for 10 minutes at room temperature.4. Briefly vortex the tube and then do a quick spin (less than 5000xg) to concentrate the liquid at the bottom.5. Store the suspended plasmid at -20°C. The DNA is stable for at least one year from date of shipping when stored at -20°C.
RefSeq:	NM_015321.1 , NP_056136.1
RefSeq Size:	2505 bp
RefSeq ORF:	1905 bp
Locus ID:	23373
UniProt ID:	Q6UUV9
Cytogenetics:	19p13.11
Protein Families:	Transcription Factors
Gene Summary:	Transcriptional coactivator for CREB1 which activates transcription through both consensus and variant cAMP response element (CRE) sites. Acts as a coactivator, in the SIK/TORC signaling pathway, being active when dephosphorylated and acts independently of CREB1 'Ser-133' phosphorylation. Enhances the interaction of CREB1 with TAF4. Regulates the expression of specific CREB-activated genes such as the steroidogenic gene, StAR. Potent coactivator of PGC1alpha and inducer of mitochondrial biogenesis in muscle cells. In the hippocampus, involved in late-phase long-term potentiation (L-LTP) maintenance at the Schaffer collateral-CA1 synapses. May be required for dendritic growth of developing cortical neurons (By similarity). In concert with SIK1, regulates the light-induced entrainment of the circadian clock. In response to light stimulus, coactivates the CREB-mediated transcription of PER1 which plays an important role in the photic entrainment of the circadian clock. [UniProtKB/Swiss-Prot Function]