

Product datasheet for **RG206968**

PCDH17 (NM_001040429) Human Tagged ORF Clone

Product data:

Product Type:	Expression Plasmids
Product Name:	PCDH17 (NM_001040429) Human Tagged ORF Clone
Tag:	TurboGFP
Symbol:	PCDH17
Synonyms:	PCDH68; PCH68
Mammalian Cell Selection:	Neomycin
Vector:	pCMV6-AC-GFP (PS100010)
E. coli Selection:	Ampicillin (100 ug/mL)
ORF Nucleotide Sequence:	>RG206968 representing NM_001040429 Red=Cloning site Blue=ORF Green=Tags(s)

TTTTGTAATACGACTCACTATAGGGCGGCCGGAATTCGTCGACTGGATCCGGTACCGAGGAGATCTGCC
GCC**CGATCGCC**

ATGTACCTTTCCATCTGTTGCTGCTTTCTCTATGGGCCCTGCCCTCACTCTCAAGAACCTCAACTACT
CCGTGCCGAGGAGCAAGGGGCCGACGGTATCGGGAACATCGGCAGGGATGCTCGACTGCAGCCTGG
GCTTCCGCTGCAGAGCGCGCGGAGGGCGCAGCAAGTCGGGTAGCTACCGGTGCTGGAGAATCC
GCACCGCACTGCTGGACGTGGACGACAGCAGCGGGCTCCTCTACACCAAGCAGCGCATCGACCGGAGT
CCCTGTGCCGCCAATGCCAAGTGCCAGCTGTCCCTCGAGGTGTCGCCAACGACAAGGAGATCTGCAT
GATCAAGGTAGAGATCCAGGACATCAACGACAACGCGCCCTCCTTCTCCTCGGACCAGATCGAAATGGAC
ATCTCGGAGAACGCTGCTCCGGGCACCCGCTTCCCCTCACACGCGACATGACCCCGACCCGGCGAGA
ATGGGCTCCGCACCTACCTGCTCACGCGCAGCATCACGGCTCTTTGGACTGGACGTTAAGTCCCGCGG
CGACGGCACCAAGTTCCAGAACTGGTCATCCAGAAGGCTCTGGACCGGAGCAACAGAATCACCATACG
CTCGTGTGACTGCCCTGGACGGTGGCGAGCCTCACGTTCCGCCACCGTACAGATCAACGTGAAGTGA
TTGACTCCAACGACAACAGCCGGTCTTCGAGGCGCCATCCTACTTGGTGAAGTGCACCGGAGGAGTCC
GCTGGGTACAGTGGTATCGATCTGAACGCCACCGCAGCCGATGAAGTCCCAATGGTGAAGTGCCTAC
TCTTTACGAGCTACGTGCCTGACCGCTGCGGGAGCTTCTCCATCGACCCCAAGACCCGGCCTAATCC
GTGTGAAGGGCAATCTGGACTATGAGGAAAACGGGATGCTGGAGATTGAGGTGCAGGCCCGAGACCTGGG
GCCTAACCTATCCCAGCCCACTGCAAAGTCACGGTCAAGCTCATCGACCGCAACGACAATGCGCGCTCC
ATCGTTTTCTGCTCCGTGCGCCAGGGGGCGCTGAGCGAGGCCGCCCTCCCGCACCGTATCGCCCTGG
TGCGGGTCACTGACCGGACTCTGGCAAGAACGGACAGCTGCAGTGTGGGTCTAGCGGAGGAGGGAC
GGGCGGCGGGGGGCTGGGCGGGCCCGGGGTTCCGTCCTTCAAGCTTGAGGAGAATACGACAAC
TTCTACACGGTGGTACTGACCGCCGCTGGACCGGAGACACAAGACGAGTACAACGTGACCATCGTGG
CGCGGGACGGGGCTCTCTCCCTCAACTCCACCAAGTCGTTCCGATCAAGATTCTAGACGAGAACGA
CAACCCGCTCGTTACCAAAGGGCTCTACGTGCTTCAGGTGCACGAGAACAACATCCCGGAGAGTAC



[View online >](#)

CTGGGCTCTGTGCTCGCCCAGGATCCCCGACCTGGGCCAGAACGGCACCGTATCCTACTCTATCCTGCCCT
CGCACATCGGCGACGTGTCTATCTACACCTATGTGTCTGTGAATCCCACGAACGGGGCCATCTACGCCCT
GCGCTCCTTTAACTTCGAGCAGACCAAGGCTTTTGAGTTCAAGGTGCTTGCTAAGGACTCGGGGCGCCC
GCGCACTTGAGAGAACGCCACGGTGAGGGTGACAGTGTAGACGTGAATGACAACGCGCCAGTGATCG
TGCTCCCCACGCTGCAGAACGACCCGCGAGCTGCAGGTGCCGCGCAACGCTGGCTGGCTATCTGGT
GAGCACTGTGCGCGCCCTAGACAGCGACTTCGGCGAGAGCGGGCGTCTCACCTACGAGATCGTGGACGGC
AACGACGACCACCTGTTTGAGATCGACCCGTCCAGCGCGAGATCCGACGCTGCACCCTTCTGGGAGG
ACGTGACGCCCGTGGTGGAGCTGGTGGTGAAGGTGACCGACCACGCAAGCCTACCCTGTCCGAGTGCC
CAAGCTCATCATCCGCTCGGTGAGCGGATCCCTTCCCAGGGGGTACCACGGGTGAATGGCGAGCAGCAC
CACTGGGACATGTCGCTGCCCTCATCGTGACTCTGAGCACTATCTCCATCATCCTCCTAGCGGCCATGA
TCACCATCGCCGTCAGTGCAAGCGCGAGAACAAGGAGATCCGCACTTACAACGCGCATCGCCGAGTA
CAGCCACCCGAGCTGGGTGGGGCAAGGGCAAGAAGAAGATCAACAAAAATGATATCATGCTGGT
CAGAGCGAAGTGGAGGAGAGGAACGCCATGAACGTCATGAACGTGGTGAAGCAGCCCTCCCTGGCCACT
CCCCATGTACTTCGACTACCAGACCCGCTGCCCTCAGCTCGCCCCGGTGGAGGTGATGATCTCAA
ACCGGCCCTCAACAACCTGACTGTCCCTCAGGGGCACGCGGGCTGCCACACCAGCTTACCAGGACAAGGG
ACTAATGCAAGCGAGACCCTGCCACTCGGATGTCCATAATTGACAGACAATTTTCCCAGAGCCCA
ATTACATGGGCAGCAGGCAGCAGTTTGTCAAAGTAGCTCCACGTTTAAAGACCCAGAAAAGGCCAGCCT
GAGAGACAGTGGGCACGGGGACAGTGATCAGGCTGACAGTGACCAAGACACTAACAAAGGCTCCTGCTGT
GACATGCTGTTAGGGAGGCACTCAAGATGAAAACACTTCAACTAAAAGCCAACCACTTGAACAAGAAC
CAGAAGAGTGTGTTAATTGCACAGATGAATGCCGAGTGTGGTCACTTCTGACAGGTGCTGGATGCCACA
GTTCCCTGCAGCCAATCAGGCTGAAAATGCAGATTACCGCACAATCTCTTTGTACCTACAGTTGAAGCT
AATGTTGAGACTGAGACTTACGAACTGTGAATCCCACTGGGAAAAAGACTTTTTGTACATTTGAAAAAG
ACAAGCGAGAGCACACTATTCTCATTGCCAACGTTAAACCTTATTTAAAAGCCAAACGTGCCCTGAGCCC
TCTCCTCCAAGAGGTCCCCTCAGCATCAAGCAGCCCAACCAAGGCGTGCATCGAGCCTTGACCTCAACA
AAAGGCTCCCTGGATGGCTGTGAAGCAAAACCAGGAGCCCTGGCTGAAGCAAGCAGTCAGTACTTGCCCA
CTGACAGTCAATATCTGTACCTAGTAAGCAACCAAGAGACCCTCCCTTCATGGCTTCCGATCAGATGGC
AAGGGTCTTTGAGATGTGCATTCCAGAGCCAGCCGGATTCCAGTGAGATGGGTGCTGTTCTTGAGCAG
CTTGACCACCCCAACAGGGATCTGGGCAGAGAGTCTGTGGATGCAGAGGAAGTTGTGAGAGAAATTGATA
AGCTTTTGAAGACTGCCGGGAAACGACCCTGTGGCTGTGAGAAAG

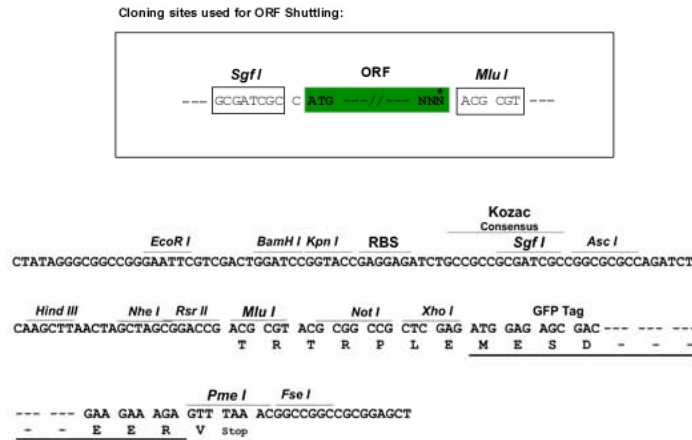
ACGCGTACGCGGCCGCTCGAG - GFP Tag - GTTTAA

Protein Sequence: >RG206968 representing NM_001040429
 Red=Cloning site Green=Tags(s)

MYLSICCCFLLWAPALTLKLNLYSVPEEQGAGTVIGNIGRDARLQGLPPAERGGGGRSKSGSYRVLENS
 APHLLDVDADSGLLYTKQRIDRESLCRHNAKQQLSLEVFANDKEICMIKVEIQDINDNAPSFSSDQIEMD
 ISENAAPGTRFPLTSAHDPDAGENGLRITYLLTRDDHGLFGLDVKSRGDGTFPELVIQKALDREQQNHHT
 LVLTAIDGGEPPRSATVQINVKVIDSNDNSPVFEAPSYLVELPENAPLGTVVIDLNATDADEGPNGEVLY
 SFSSYVDRVRELFSIDPKTGLIRVKGNDYEENGMLEIDVQARDLGPNPIPACHCKVTVKLIDRNDNAPS
 IGFVSVRQGALSEAAPPGTVIALVRVTRDRSGKNGQLQCRVLGGGGTGGGGGLGGPGGSVPFKLEENYDN
 FYTVVTRPLDRETQDEYNVTIVARDGGSPLNSTKSFAIKILDENDNPPRFTKGLYVLQVHENNIPGEY
 LGSVLAQDPDLGQNGTVSYSILPSHIGDVSITYYVSVNPTNGAIYALRSFNFEQTKAFEFKVLAKDSGAP
 AHLESNATVRVTVLDVNDNAPVIVLPTLQNDTAEQVPRNAGLGYLVSTVRALDSDFGESGRLTYEIVDG
 NDDHLFEIDPSSGEIRTLHPFWEDVTPVVELVVKVTDHGKPTLSAVAKLIIRSVSGSLPEGVPRVNGEQH
 HWDMSLPLIVTLSTISIIILLAAMITIAVKCKRENKEIRTYNCRIAEYSHPLGGGKGGKKKINKNDIMLV
 QSEVEERNAMNMNVVSSPSLATSPMYFDYQTRLPLSSPRSEVMYLKPASNNLTVPQGHAGCHTSFTGQG
 TNASET PATRMSIIQTDNFAEPNYMGSRQQFVQSSSTFKDPERASLRDSGHGSDQADSDQDTNKGSCC
 DMSVREALKMKTTSTKSQPLEQEPEECVNCTDECRVLGHSRDCWMPQFPANQAENADYRTNLFVPTVEA
 NVETETETVNP TGKKTFC TFGKDKREHTILIANVKPYLKAKRALSPLLQEVPSASSSPTKACIEPCTST
 KGLSDGCEAKPGALAEASSQYLPTDSQYLSPSKQPRDPPFMSDQMARVFADVHSRASRDSSEMGAVLEQ
 LDHPNRDLGRESVDAEEVVREIDKLLQDCRGNPVAVRK

TRTRPLE - GFP Tag - V

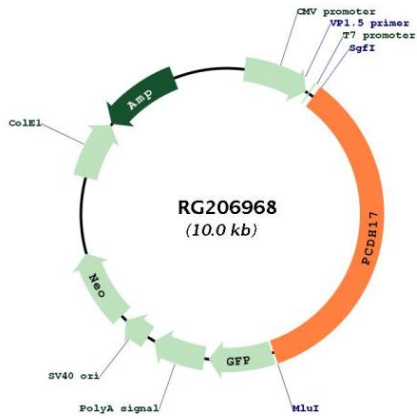
Restriction Sites: SgfI-MluI
 Cloning Scheme:



ACCN: NM_001040429
 ORF Size: 3477 bp

OTI Disclaimer:	The molecular sequence of this clone aligns with the gene accession number as a point of reference only. However, individual transcript sequences of the same gene can differ through naturally occurring variations (e.g. polymorphisms), each with its own valid existence. This clone is substantially in agreement with the reference, but a complete review of all prevailing variants is recommended prior to use. More info
OTI Annotation:	This clone was engineered to express the complete ORF with an expression tag. Expression varies depending on the nature of the gene.
Components:	The ORF clone is ion-exchange column purified and shipped in a 2D barcoded Matrix tube containing 10ug of transfection-ready, dried plasmid DNA (reconstitute with 100 ul of water).
Reconstitution Method:	<ol style="list-style-type: none"> 1. Centrifuge at 5,000xg for 5min. 2. Carefully open the tube and add 100ul of sterile water to dissolve the DNA. 3. Close the tube and incubate for 10 minutes at room temperature. 4. Briefly vortex the tube and then do a quick spin (less than 5000xg) to concentrate the liquid at the bottom. 5. Store the suspended plasmid at -20°C. The DNA is stable for at least one year from date of shipping when stored at -20°C.
RefSeq:	NM_001040429.3
RefSeq Size:	8009 bp
RefSeq ORF:	3480 bp
Locus ID:	27253
UniProt ID:	O14917
Cytogenetics:	13q21.1
Protein Families:	Druggable Genome
Gene Summary:	This gene belongs to the protocadherin gene family, a subfamily of the cadherin superfamily. The encoded protein contains six extracellular cadherin domains, a transmembrane domain, and a cytoplasmic tail differing from those of the classical cadherins. The encoded protein may play a role in the establishment and function of specific cell-cell connections in the brain. [provided by RefSeq, Jul 2008]

Product images:



Circular map for RG206968