

Product datasheet for **RG206967**

LGALS12 (NM_033101) Human Tagged ORF Clone

Product data:

Product Type:	Expression Plasmids
Product Name:	LGALS12 (NM_033101) Human Tagged ORF Clone
Tag:	TurboGFP
Symbol:	LGALS12
Synonyms:	GAL12; GRIP1
Mammalian Cell Selection:	Neomycin
Vector:	pCMV6-AC-GFP (PS100010)
E. coli Selection:	Ampicillin (100 ug/mL)
ORF Nucleotide Sequence:	>RG206967 representing NM_033101 Red=Cloning site Blue=ORF Green=Tags(s)

TTTTGTAATACGACTCACTATAGGGCGGCCGGAATTCGTCGACTGGATCCGGTACCGAGGAGATCTGCC
GCC**CGATCGCC**

ATGAGTCAGCCCAGTGGGGCAGGGCTCCTGGAACGAGGATCTACAGTTGGAGTTGCCCCACTGTCATGT
CACCTGGAGAAAACTGGACCAATTCTGACAGCTTCATTCTGCAACCACCAGTCTCCACCCGGTGGT
TCCTTATGTCACGACGATTTTGGAGGCCTGCATGCAGGCAAGATGGTCATGCTGCAAGGAGTGGTCCCT
CTAGATGCACACAGGTTTCAGGTGGACTCCAGTGTGGCTGCAGCCTGTGTCCCCGCCAGATATCGCT
TCCACTTCAACCCTCGTTCCATACCACCAAGCCCATGTCATCTGCAACACCCTGCATGGTGGACGCTG
GCAAAGGGAGGCCCGGTGGCCCCACCTGGCCCTGCGAAGAGGCTCCAGCTTCCATCCTCTTTCTCTTC
GGGAATGAGGAAGTGAAGGTGAGTGTGAATGGACAGCACTTTCTCCACTCCGGTACCGGCTCCCACTGT
CTCATGTGGACACGCTGGGTATATTTGGTGAATCCTGGTAGAGGCTGTTGGATTCTGAACATCAATCC
ATTTGTGGAGGGCAGCAGAGAGTACCCAGCTGGACATCCTTTCTGCTGATGAGCCCCAGGCTGGAGGTG
CCCTGCTCACATGCTCTTCCCCAGGGTCTCTCGCTGGGCAGGTGCATCATAGTACGGGGACTGGTCTTGC
AAGAGCCGAAGCATTTTACTGTGAGCCTGAGGGACCAGGCTGCCATGCTCCTGTGACACTCAGGGCCTC
TTTCGCAGACAGAACTCTGGCCTGGATCTCCCCTGGGGCAGAAAGAACTGATCTCAGCCCCCTTCCCT
TTTTACCCCAGAGATTCTTTGAGGTGCTGCTCCTGTTCCAGGAGGGAGGCTGAAGCTGGCGCTCAATG
GGCAGGGCTGGGGCCACCAGCATGAACCAGCAGGCCCTGGAGCAGCTGCGGGAGCTCCGGATCAGTGG
AAGTGTCAGCTCTACTGTGTCCACTCC

ACGCGTACGCGGCCGCTCGAG - GFP Tag - GTTTAA



[View online »](#)

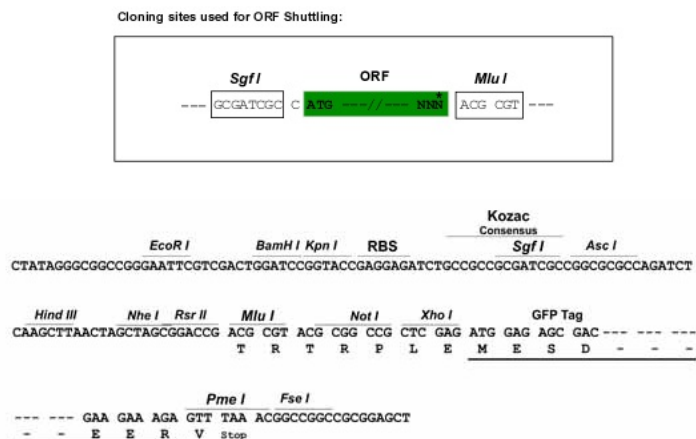
Protein Sequence: >RG206967 representing NM_033101
Red=Cloning site Green=Tags(s)

MSQPSSGRAPGTRIYSWSCPTVMSPGKLDPIPDSFILQPPVFHPVVPYVTTIFGGLHAGKMVMLQGVVP
 LDAHRFQVDFQCGCSLCPRPDIAFHFNPRFHHTTKPHVICNTLHGGRWQREARWPHLALRRGSSFLILFLF
 GNEEVKYSVNGQHFLHFRYRLPLSHVDTLGI FG DILVEAVGFLNINPFVEGSREYPAGHPFLLMSRPLEV
 PCSHALPQGLSPGQVIIVRGLVLQEPKHFTVSLRDQAAHAPVTLRASFA DR TLAWISRWGQKKLISAPFL
 FYPQRF FEV LLLFQEGGLK LALNGQGLGATSMNQQALEQLREL R ISG SVQLYCVHS

TRTRPLE - GFP Tag - V

Restriction Sites: SgfI-MluI

Cloning Scheme:



ACCN: NM_033101

ORF Size: 1008 bp

OTI Disclaimer: The molecular sequence of this clone aligns with the gene accession number as a point of reference only. However, individual transcript sequences of the same gene can differ through naturally occurring variations (e.g. polymorphisms), each with its own valid existence. This clone is substantially in agreement with the reference, but a complete review of all prevailing variants is recommended prior to use. [More info](#)

OTI Annotation: This clone was engineered to express the complete ORF with an expression tag. Expression varies depending on the nature of the gene.

Components: The ORF clone is ion-exchange column purified and shipped in a 2D barcoded Matrix tube containing 10ug of transfection-ready, dried plasmid DNA (reconstitute with 100 ul of water).

Reconstitution Method:

1. Centrifuge at 5,000xg for 5min.
2. Carefully open the tube and add 100ul of sterile water to dissolve the DNA.
3. Close the tube and incubate for 10 minutes at room temperature.
4. Briefly vortex the tube and then do a quick spin (less than 5000xg) to concentrate the liquid at the bottom.
5. Store the suspended plasmid at -20°C. The DNA is stable for at least one year from date of shipping when stored at -20°C.

RefSeq: [NM_033101.3](#)

RefSeq Size: 1696 bp

RefSeq ORF: 945 bp

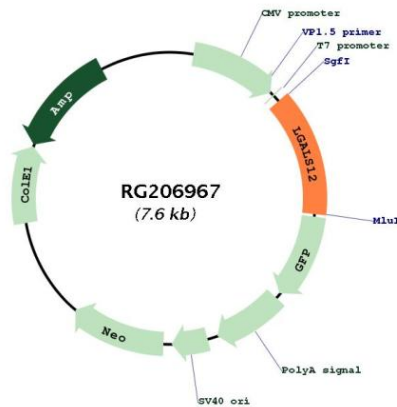
Locus ID: 85329

UniProt ID: [Q96DT0](#)

Cytogenetics: 11q12.3

Gene Summary: This gene encodes a member of the galectin superfamily, a group of beta-galactoside-binding proteins with conserved carbohydrate recognition domains. The related mouse protein is a primary regulator of the early stages of adipose tissue development. Alternatively spliced transcript variants encoding different isoforms have been described. [provided by RefSeq, May 2010]

Product images:



Circular map for RG206967