

Product datasheet for **RG206933**

Rb (RB1) (NM_000321) Human Tagged ORF Clone

Product data:

Product Type:	Expression Plasmids
Product Name:	Rb (RB1) (NM_000321) Human Tagged ORF Clone
Tag:	TurboGFP
Symbol:	Rb
Synonyms:	OSRC; p105-Rb; p110-RB1; pp110; PPP1R130; pRb; RB
Mammalian Cell Selection:	Neomycin
Vector:	pCMV6-AC-GFP (PS100010)
E. coli Selection:	Ampicillin (100 ug/mL)



[View online »](#)

ORF Nucleotide Sequence:

>RG206933 representing NM_000321
 Red=Cloning site Blue=ORF Green=Tags(s)

TTTTGTAATACGACTCACTATAGGGCGGCCGGGAATTCGTCGACTGGATCCGGTACCGAGGAGATCTGCC
 GCC**CGGATCGCC**

ATGCCGCCAAAACCCCGAAAAACGGCCGCCACCGCCGCCGCTGCCGCCGGAAACCCCGGCACCGC
 CGCCGCCGCCCTCCTGAGGAGACCCAGAGCAGGACAGCGGCCGGAGGACCTGCCTCTCGTCAGGCT
 TGAGTTTGAAGAAACAGAAGAACCTGATTTACTGCATTATGTCAGAAATTAAGATACCAGATCATGTC
 AGAGAGAGAGCTTGGTTAACTTGGGAGAAAGTTTCATCTGTGGATGGAGTATTGGGAGGTTATATCAAA
 AGAAAAAGGAAGTGTGGGAATCTGTATCTTTATTGCAGCAGTTGACCTAGATGAGATGTCGTTCACTTT
 TACTGAGCTACAGAAAAACATAGAAATCAGTGTCCATAAATCTTTAACTTACTAAAAGAAATGATACC
 AGTACCAAAGTTGATAATGCTATGTCAAGACTGTTGAAGAAGTATGATGATTGTTGCACTCTTCAGCA
 AATTGGAAAGGACATGTGAACCTATATATTTGACACAACCCAGCAGTTCCGATATCTACTGAAATAAATTC
 TGCATTGGTGCTAAAAGTTTCTGGATCACATTTTTATTAGCTAAAGGGGAAGTATTACAAATGGAAGAT
 GATCTGGTGATTTCAATTCAGTTAATGCTATGTGCTTACTGACTATTTTATAAATCTCACCTCCCATGT
 TGCTCAAAGAACCATATAAAACAGCTGTTATACCCATTAAATGGTTCACCTCGAACACCCAGGCGAGGTC
 GAACAGGAGTGCACGGATAGCAAAACAACCTAGAAAATGATACAAGAATTATTGAAGTTCTCTGTAAGAA
 CATGAATGTAATATAGATGAGGTGAAAAATGTTTATTTCAAAAATTTTATACCTTTTATGAATCTCTTG
 GACTTGTAACTCTAATGGACTTCCAGAGGTTGAAAATCTTTCTAAACGATACGAAGAAATTTATCTTAA
 AAATAAAGATCTAGATGCAAGATTATTTTGGATCATGATAAACTCTTCAGACTGATTCATAGACAGT
 TTTGAAACACAGAGAACCACGAAAAAGTAACCTTGATGAAGAGGTGAATGTAATTCCTCCACACACTC
 CAGTTAGGACTGTTATGAACACTATCCAACAATTAATGATGATTTTAAATTCAGCAAGTGCATCAACCTTC
 AGAAAACTGATTTCTATTTTAAACAACCTGCACAGTGAATCCAAAAGAAAGTATACTGAAAAGAGTGAAG
 GATATAGGATACATCTTTAAAGAGAAATTTGCTAAAGCTGTGGGACAGGTTGTGTGCAAAATGGATCAC
 AGCGATACAAACTGGAGTTCGCTTGTATTACCGAGTAATGGAATCCATGCTTAAATCAGAAGAAGAACG
 ATTATCCATTCAAAAATTTAGCAAACCTTCTGAATGACAACATTTTTCATATGCTTTATTGGCGTGCCT
 CTTGAGGTTGTAATGGCCACATATAGCAGAAGTACATCTCAGAATCTTGATTCTGGAACAGATTTGTCTT
 TCCCATGGATTCTGAATGTGCTTAATTTAAAAGCCTTTGATTTTTACAAAGTGATCGAAAGTTTTATCAA
 AGCAGAAGGCAACTTGACAAGAGAAATGATAAAACATTTAGAACGATGTGAACATCGAATCATGGAATCC
 CTTGCATGGCTCTCAGATTCACCTTTATTTGATCTTATTAACAATCAAAGGACCGAGAAGGACCAACTG
 ATCACCTTGAATCTGCTTCTCTTAATCTTCTCTCCAGAATAATCACACTGCAGCAGATATGTATCT
 TTCTCCTGTAAGATCTCAAAGAAAAAAGTTCAACTACGCGTGTAAATTTCTACTGCAAAATGCAGAGACA
 CAAGCAACCTCAGCCTTCCAGACCCAGAAGCCATTGAAATCTACCTCTCTTTCACTGTTTTATAAAAAAG
 TGTATCGGCTAGCCTATCTCCGGCTAAATACACTTTGTGAACGCCTTCTGTCTGAGCACCAGAATTAGA
 ACATATCATCTGGACCCTTTCCAGCACACCCTGCAGAATGAGTATGAACTCATGAGAGACAGGCATTTG
 GACCAAATATGATGTGTCCATGTATGGCATAATGCAAAGTGAAGAATATAGACCTTAAATTCAAAATCA
 TTGTAACAGCATAACAAGGATCTTCTCATGCTGTTGAGGAGACATTCAAACGTGTTTTGATCAAAGAAGA
 GGAGTATGATTTCTATTATAGTATTCTATAACTCGGCTTCATGCAGAGACTGAAAACAAATTTTTGTCAG
 TATGCTTCCACCAGGCCCTACCTTGTACCAATACCTCACATTCTCGAAGCCCTTACAAGTTTCTTA
 GTTACCCTTACGGATTCTGGAGGGAACATCTATATTTACCCCTGAAGAGTCCATATAAAATTTGAGA
 AGGTCTGCCAACCAACAAAAATGACTCCAAGATCAAGAATCTTAGTATCAATGGTGAATCATTCGGG
 ACTTCTGAGAAGTTCAGAAAAATAATCAGATGGTATGTAACAGCGACCGTGTGCTCAAAAAGAGTGCTG
 AAGGAAGCAACCCTCTAAACCACTGAAAAACTACGCTTTGATATTGAAGGATCAGATGAAGCAGATGG
 AAGTAAACATCTCCAGGAGAGTCAAATTTGAGCAGAACTGGCAGAAATGACTTCTACTCGAACACGA
 ATGCAAAAAGCAGAAAATGAATGATAGCATGGATACCTCAAACAAGGAAGAGAAA

AGCGGACCGACGCGTACGCGGCCGCTCGAG – GFP Tag – GTTTAA

Protein Sequence: >RG206933 representing NM_000321
 Red=Cloning site Green=Tags(s)

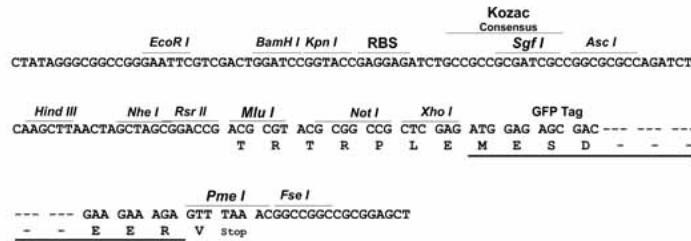
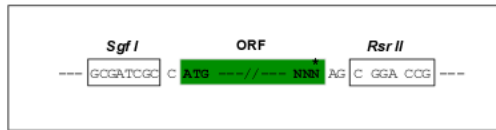
MPPKTPRKTAATAAAAAAEPAPPPPPPEEDPEQDSGPEDLPLVRLEFEETEEDFTALCQKLIKIPDHV
 RERAWLTWEKVSSVDGVLGGYIQKKELWGCIFIAAVDLDEMSFTTELQKNIEISVHKFFNLLKEIDT
 STKVDNAMSRLLKKYDVLFAFLSKLERTCELIYLTQPSSSISTEINSALVLKVSWITFLLAKGEVLQMED
 DLVISFQLMLCVLDYFIKLSPPMLLKPEYKTAVIPINGSRPTPRRGQNRSARIAKQLENDTRIEVLCKE
 HECNIDEVKNVYFKNFIPFMNSLGLVTSNGLPEVENLSKRYEEIYLKKNKDLARLFLDHDKTLQDTSIDS
 FETQRTPRKSNLDEEVNVIHPHTPVRTVMNTIQQLMMILNSASDQPSENLISYFNNCTVNPKESILKRVK
 DIGYIFKEKFAKAVGQGCVEIGSQRYKLGVRLYYRVMESMLKSEEERLSIQNFSKLLNDNIFHMSLLACA
 LEVVMATYSRSTSQLNDSGTDLSFPWILNVLNLKAFDFYKVIIESFIKAEGNLTREMIKHLERCEHRIMES
 LAWLSDSPLFDLIKQSKDREGPTDHLESACPLNLPLQNNHTAADMYLSPVRSPPKKKSTTRVNSTANAET
 QATSAFQTQKPLKSTSLFYKVVYRLAYLRNLTCERLLSEHPELEHIWTLFQHTLQNEYELMRDRHL
 DQIMMCSMYGICKVKNIDLKFKIIVTAYKDLPHAVQETFKRVLIKEEYDSIIVFYNSVFMQRKLTNIIQ
 YASTRPPTLSPIPHIPRSPYKFPSSPLRIPGGNIYISPLKSPYKISEGLPTPTKMTPRSRILVSIIGSFSG
 TSEKFQKINQMVCSNDRVLKRSAEGSNPPKPLKLRFDIEGSDEADGSKHLPGESKFKQKLAEMTSTRTR
 MQKQKMNDSDMTSNKEEK

SGPTRRRLE - GFP Tag - V

Restriction Sites: SgfI-RsrII

Cloning Scheme:

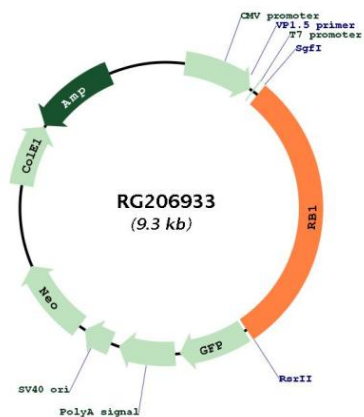
Cloning sites used for ORF Shuttling:



ACCN: NM_000321

ORF Size:	2784 bp
OTI Disclaimer:	The molecular sequence of this clone aligns with the gene accession number as a point of reference only. However, individual transcript sequences of the same gene can differ through naturally occurring variations (e.g. polymorphisms), each with its own valid existence. This clone is substantially in agreement with the reference, but a complete review of all prevailing variants is recommended prior to use. More info
OTI Annotation:	This clone was engineered to express the complete ORF with an expression tag. Expression varies depending on the nature of the gene.
Components:	The ORF clone is ion-exchange column purified and shipped in a 2D barcoded Matrix tube containing 10ug of transfection-ready, dried plasmid DNA (reconstitute with 100 ul of water).
Reconstitution Method:	<ol style="list-style-type: none">1. Centrifuge at 5,000xg for 5min.2. Carefully open the tube and add 100ul of sterile water to dissolve the DNA.3. Close the tube and incubate for 10 minutes at room temperature.4. Briefly vortex the tube and then do a quick spin (less than 5000xg) to concentrate the liquid at the bottom.5. Store the suspended plasmid at -20°C. The DNA is stable for at least one year from date of shipping when stored at -20°C.
RefSeq:	NM_000321.3
RefSeq Size:	4772 bp
RefSeq ORF:	2787 bp
Locus ID:	5925
UniProt ID:	P06400
Cytogenetics:	13q14.2
Domains:	RB_B, RB_A, CYCLIN
Protein Families:	Druggable Genome, Transcription Factors
Protein Pathways:	Bladder cancer, Cell cycle, Chronic myeloid leukemia, Glioma, Melanoma, Non-small cell lung cancer, Pancreatic cancer, Pathways in cancer, Prostate cancer, Small cell lung cancer
Gene Summary:	The protein encoded by this gene is a negative regulator of the cell cycle and was the first tumor suppressor gene found. The encoded protein also stabilizes constitutive heterochromatin to maintain the overall chromatin structure. The active, hypophosphorylated form of the protein binds transcription factor E2F1. Defects in this gene are a cause of childhood cancer retinoblastoma (RB), bladder cancer, and osteogenic sarcoma. [provided by RefSeq, Jul 2008]

Product images:



Circular map for RG206933