

Product datasheet for **RG206903**

CNOT1 (NM_206999) Human Tagged ORF Clone

Product data:

Product Type: Expression Plasmids
Product Name: CNOT1 (NM_206999) Human Tagged ORF Clone
Tag: TurboGFP
Symbol: CNOT1
Synonyms: AD-005; CDC39; HPE12; NOT1; NOT1H
Mammalian Cell Selection: Neomycin
Vector: pCMV6-AC-GFP (PS100010)
E. coli Selection: Ampicillin (100 ug/mL)
ORF Nucleotide Sequence: >RG206903 representing NM_206999
Red=Cloning site Blue=ORF Green=Tags(s)

TTTTGTAATACGACTCACTATAGGGCGGCCGGAATTCGTCGACTGGATCCGGTACCGAGGAGATCTGCC
GCC**CGATCGCC**

ATGAATCTTGACTCGCTCTCGCTGGCCTTGCTCAAATCAGCTACCTGGTGGACAATTTAACCAAGAAAA
ATTACCGAGCCAGCCAGCAGGAAATACAGCATATTGTGAATCGGCACGGTCTGAGGCAGACAGGCATTT
ATTACGCTGCCTATTTTCGCATGTGGATTTCACTGGCGATGGTAAAAGCAGTGGCAAAGATTTCCATCAG
ACTCAGTTTCTGATTCAAGAGTGTGCGTTGCTGATTACAAAGCCAAATTTATCTCGACGCTGTCCTATG
CCATTGATAATCCATTGCACTATCAGAAGAGTTTAAAGCCTGCACCCACTTATTTGCCAGCTGAGTAA
AGTGCTCAAATTAAGCAAAGTACAAGAGGTAATTTTGGCCTTGCCTGTTGAATCTTCCAGCTCAGAT
CTTAGAGGTTTCGCTGCCAGTTTATCAAACAGAAGCTTCCAGATCTTCTGCGTTCTTACATTGACGCAG
ACGTCACTGGAATCAAGAAGGTGGCTTCCAAGATATAGCAATAGAGGTCTACACCTCCTCCTCCCA
TCTCCTTTTGGGCAGAAGGGAGCCTTTGGAGTTGGACAAGAACAGATAGACGCTTTTCTTAAGACGCTG
CGCAGAGATTTTCCCAAGAAGCCTGTCCCGTGGTGTGCGCACCCTTTTATACCTGAAAAACGGGACA
TTCTAATGGACAGGATCCTGCCTGATCCGGAGGGTAGCTAAAACCATGATGGAGAGCTTTTGGCTGA
TTTCATGCAAGAAGTAGGCTATGGCTTTTGTGCAAGTATTGAAGAATGTCGCAATATAATCGTGCAGTTT
GGTGTTCGGGAGGTCACAGCTGCCAGGTTGCAAGGGTTTTGGGAATGATGGCTCGAATCATTCAAGGAT
TAACAGATGGCATTCCATTACAGAGTATTTCTGCTCCGGCAGTGGGATCTGGAGTATGGGAAAGATAA
AAGTGATGGAGCACAGGCACACACATGGAATGTAGAAGTCTTGATTGACGTTCTTAAAGAACTGAATCCA
AGTTTGAATTTCAAGGAAGTAACTTATGAACTGGACCATCCTGGATTTCAAATTCGTGACAGTAAAGGAC
TTCATAATGTGGTTTATGGCATTCAAGAGGGTTTTGGGTATGGAAGTGTCCAGTAGACCTCATATATAG
ACCTTGAAACATGCTGAAGGCCAGCTCTCCTTCAATCAACATCCCTTATAAATCCAGAGATCTTCTGT
TTTGCTGACTATCCCTGTACTACTGTTGCCACTGATATTCTGAAAGCACCACCAGAGGATGACAATCGAG
AAATTGCCACATGGAAGAGCTTGGATTTGATTGAATCTCTGCTGAGGCTTGCAGAGGTTGGCAGTATGA
GCAAGTCAAACAGCTCTCAGCTTCCCTATCAAACACTGTCCAGACATGCTGGTATTGGCCTTACTACAA



[View online >](#)

ATTAACACCTCTTGGCATACCTTGCGCCATGAACTTATCTCCACTCTGATGCCAATTTCTTGGAAACC
 ATCCTAACTCAGCTATTATTTGCACTATGCATGGCATGGGCAGGGACAGTCTCCCTCAATTCGCCAACT
 TATCATGCATGCAATGGCAGAATGGTACATGAGAGGGGAGCAGTATGATCAGGCCAAATGTCTCGAATA
 CTTGATGTGGCCAGGACTTGAAGGCCTTGTCAATGCTGCTAAATGGTACTCCATTTGCCTTTGTTATTG
 ACCTTGCTGCACTTGCTTACGTCGTGAATACCTCAAACCTTGATAAGTGGCTCACAGATAAAATTCGAGA
 GCATGGGGAGCCTTTTATCCAGGCGTGTATGACTTTTTAAAGAGACGGTGTCTCTATTTTGGCGGA
 GTTGCCCAAGCTTGTGCAGGGAGTGTTCAGGAGCTATCAGAACTATCCTCACCATGGTAGCCAATTG
 CAGTAATGTTATGAATAAGGCCAGACAACCACCACCTGGAGTTATGCCAAAAGGACGTCCTCCTAGTGCT
 AGCAGCTTAGATGCCATTTCTCCTGTTGAGATTGACCCTCTTGCTGGAATGACATCTCTTAGTATAGGTG
 GTTCAGCTGCCCCTCACACCCAGAGTATGCAGGGTTTTCTCAAATTTGGGTTCTGCATTAGTACCCC
 TCAGTACCAGCAAAAGCATTTCACCCCTTTCAACCCCAATCAGACCACTGCATTAGTGGTATTGGA
 GGACTTTCATCACAGCTCCAGTAGGTGGTCTTGGCACAGGCAGCCTGACTGGTATAGGAACTGGTGCTC
 TTGGACTCCCTGCAGTGAATAACGACCCTTTGTACAGAGGAACTGGGCACCTCTGGACTGAATCAGCC
 TACATTCCAGCAGAGTAAAGTGAACCTTCGGACTTGTCTCAGGTGTGGCCAGAGGCAAAACCAGCACTTT
 AGTAAAGAGATAGATGATGAAGCAACAGCTATTTCCAGCGAATATATAATCATCCACCACATCCAACCA
 TGCTCTGTTGATGAGGTATTAGAAATGCTGCAGAGATTTAAAGACTCTACTATAAAGAGGGAAACGAGAAGT
 ATTTAACTGTATGCTAAGGAACTTGTGTTGAAGAATATCGTTTTTTCCCCAGTATCCTGATAAAGAGTTA
 CATATAACAGCCTGCCTATTTGGTGGTATAATTGAGAAAGGACTGGTCACTTACATGGCACTAGGTCTGG
 CTCTACGATATGTTCTTGAAGCCTTACGCAAGCCTTTGGATCCAAAATGTATTATTTCCGGATTGCTGC
 ACTAGATAGATTTAAAAACAGATTGAAGGACTATCCCAAGTATTGTCAGCATTGGCTTCTATCAGTCAC
 TTTATGCAATTTCCACATCATTTACAGGAGTATATTGAGTATGGACAGCAGTCTAGAGACTCCTCTGTGA
 AAATGCAAGGCTCTATCACACCCCTGGAAGTATTGCCTGGCTCAGGCCAGGCTCAGGCCAGGCTTCC
 AGCAAAAGCTCCTCTTGCTGGTCAAGTTAGCACTATGGTAACCACTCAACAACCTACCAGTGTGTGCTAAA
 ACGGTTACGGTACCAGGCCAACTGGAGTCAGCTTTAAGAAAGATGTGCCACCTTCTATTAATACTACAA
 ATATAGATACGTTGCTTGTGGCCACAGTCAAACCTGAGAGAATTGTGGAGCCCCAGAAAATATCCAGGA
 GAAAATTGCTTTTATTTCAATAATCTCTCACAGTCAAATATGACACAAAAGGTTGAAGAGCTAAAGGAA
 ACGGTGAAAGAAGAAATTTATGCCTTGGGTTTACAGTATCTGGTATGAAGAGAGTCAGTATTGAGCCAA
 ACTTTTCATAGCCTGTATTCAAACCTCTTGACACGCTGAAGAATCCTGAATTTAACAAGATGTTTCTGAA
 TGAGACCTACAGAACATTAAAGTGTCTCTGACCTCTGATAAAGCTGCAGCCAATTTCTCAGATCGTTCT
 TTGCTGAAGAACTTGGGACATTGGCTAGGAATGATCACATTAGCTAAAAACAACCCATCTTACACACTG
 ACTTGGATGTGAAATCATTGCTGCTAGAGGCTTATGTTAAAGGACAACAAGAATTGCTCTATGTAGTGCC
 CTTTGTGGCCAAAGTCTTAGAATCTAGCATTCTGAGTGTGGTTTTTAGGCCACCAAAACCCTTGGACAATG
 GCAATTATGAATGTATTAGCTGAGCTACATCAGGAGCATGACTTAAAGTTAAACTTGAAGTTGAAATCG
 AGGTTCTCTGCAAGAACCTTGCATTAGACATCAATGAGCTAAAACCTGGAACCTCCTAAAGGATAAAGA
 TCGCCTGAAGAATTTAGATGAGCAACTCTCTGCTCCAAAGAAAGATGTCAAGCAGCCAGAAGAATCCCT
 CCCATCACAAACCACAACAACTTCTACTACACCAGCTACCAACACCACTTGTACAGCCACGGTTCACCAC
 AGCCACAGTACAGCTACCACGACATCAATGTCTATTCCTTGGGGCTTGGCACCACACATTACTCTGAA
 TCCAACAATTCCTTGTTCAGGCCCATCCACAGTTGAAGCAGTGTGTGCGTCAGGCAATGAACGGGCT
 GTCCAGGAGCTGGTCCATCCTGTGGTGGATCGATCAATTAAGATTGCCATGACTACTTGTGAGCAATAG
 TCAGGAAGGATTTTGCCTGGATTTCGGAGGAATCTCGAATGCGAATAGCAGCTCATCACATGATGCGTAA
 CTTGACAGCTGGAATGGCTATGATTACATGCAGGGAACCTTTGCTCATGAGCATATCTACCAACTTAAAA
 AACAGTTTTGCCTCAGCCCTTCTGTGAAGTTGGCTATTTCTTGGTATAGGTACAAAACGTATTACTGCT
 TGTCTGAATAATTTTTTTCTTTGTCTATATATGGCACTGGGCGTTACCAGTATTCTTAATAATCACCA
 TATTTGTTTGTCTTCCATCATTTTAGATTGAATTCTGTGAGGCAAGCATCATGTCTGTGTGTTTT
 TTTTTTTTCTGTATATTCTCAACACGATGTT

ACGCGTACGCGGCCGCTCGAG – GFP Tag – GTTTAA

Protein Sequence: >RG206903 representing NM_206999
 Red=Cloning site Green=Tags(s)

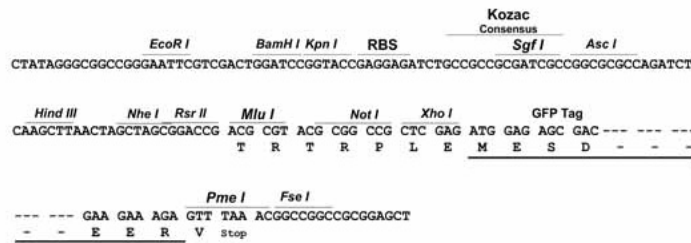
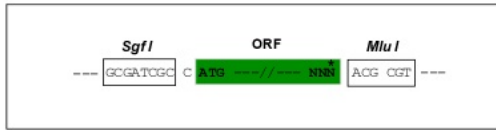
MNLDLSLALSQISYLVNLTKKNYRASQQEIQHIVNRHGPEADRHLRCLFSHVDFSGDGKSSGKDFHQ
 TQFLIQECALLITKPNFISTLSYAIDNPLHYQKSLKPAPHLFAQLSKVLKLSKVQEVIFGLALLNSSSSD
 LRGFAAQFIKQKLPDLLRSYIDADVSGNQEGGFQDIAIEVLHLLLSHLLFGQKGFVGVQEQIDAFKLT
 RRDFPQERCVPVLAPELLYPEKRDIIMDRILPDSGGVAKTMMESSLADFMQEVGYGFCASIEECRNIIVQF
 GVREVTAAQVARVLGMMARTHSLTDGIPLQSIAPGSGIWSDGKSDGAQAHTWNVEVLIDVLKELNP
 SLNFKEVTYELDHPGFQIRDSKGLHNVVYGIQRGLGMEVFPVDLIYRPWKHAEGQLSFIQHSLINPEIFC
 FADYPCHTVATDILKAPPEDNREIATWKSLLDIESLLRLAEVQYEQVKQLFSFPIKHCPDMLVLALLQ
 INTSWHTLRHELISTLMPIFLGNHPNSAIIHYAWHGQSQSPSIRQLIMHAMAEWYMRGEYDQAKLSRI
 LDVAQDLKALSMLLNGTPFAFVIDLAALASREYLKLDKWLTDKIREHGEPFIQACMTFLKRRCP SILGG
 LAPEKDQPKSAQLPPETLATMLACLQACAGSVSQELSETILTMVANCNSVMNKARQPPPGVMPKGRPPSA
 SSLDAISPQVIDPLAGMTSLSIGGSAAPHTQSMQGFPPNLGSAFSTPQSPAKAFPPLSTPNQTTAFSGIG
 GLSSQLPVGGLGTGSLTGIGTGALGLPAVNNDPFVQRKLGTSGLNQPTFQQSKMKPSDL SQVWPEANQHF
 SKEIDDEANSYFQRIYNHPPHTMSVDEMLELQRFKDSIKREREVFNCLRNLFEEYRFPQYDPKEL
 HITACLFGGIIIEKGLVTYMALGLALRYVLEALRPFPGSKMYFFGIAALDRFKNRLKDPYQYQCQLASISH
 FMQFPHLLQEYIEYGQSRDPPVKMQGSIITPGSIALAQAQAQVPAKAPLAGQVSTMTVTSTTTTVAK
 TVTVTRPTGVSFKKDVPPSINTTNTIDTLLVATDQTERIVEPPENIQEKIAFIFNNLSQSNMTQKVEELKE
 TVKEEFMPWVSQYLMKRVSIENPFHSLYSNFLDTLKNPEFNKMVLNETYRNIKVLLTSDKAAANFSDRS
 LLKNLGHWLGMITLAKNKPILHTDL DVKSLLLEAYVKQQEQLLYVVPFVAKVLESSIRSVVFRPPNPWTM
 AIMNVLAELHQEHDLKLNLFKFEIEVLCNLAALDINELKPGNLLKDKDRLKLNDEQLSAPKKDVKQPEELP
 PITTTTTSTPATNTTCTATVPPQPQYSYHDINVYSLAGLAPHITLNPITPLFQAHPQLKQCVRQAIERA
 VQELVHPVVDRSIIAMTTCEQIVRKDFALDSEESRMRIAAHHMMRNLTAGMAMITCREPLLSISITNLK
 NSFASALRVSWLFPWYRYKTYCYLSVIIFFVYIWHWALPLILNNHHICLMSSIIILDCNSVRQSIMSVCF
 FFFLLYSQHDV

TRTRPLE - GFP Tag - V

Restriction Sites: SgfI-MluI

Cloning Scheme:

Cloning sites used for ORF Shutting:



ACCN: NM_206999

ORF Size: 4653 bp

OTI Disclaimer: Due to the inherent nature of this plasmid, standard methods to replicate additional amounts of DNA in E. coli are highly likely to result in mutations and/or rearrangements. Therefore, OriGene does not guarantee the capability to replicate this plasmid DNA. Additional amounts of DNA can be purchased from OriGene with batch-specific, full-sequence verification at a reduced cost. Please contact our customer care team at custsupport@origene.com or by calling 301.340.3188 option 3 for pricing and delivery.

The molecular sequence of this clone aligns with the gene accession number as a point of reference only. However, individual transcript sequences of the same gene can differ through naturally occurring variations (e.g. polymorphisms), each with its own valid existence. This clone is substantially in agreement with the reference, but a complete review of all prevailing variants is recommended prior to use. [More info](#)

OTI Annotation: This clone was engineered to express the complete ORF with an expression tag. Expression varies depending on the nature of the gene.

Components: The ORF clone is ion-exchange column purified and shipped in a 2D barcoded Matrix tube containing 10ug of transfection-ready, dried plasmid DNA (reconstitute with 100 ul of water).

Reconstitution Method:

1. Centrifuge at 5,000xg for 5min.
2. Carefully open the tube and add 100ul of sterile water to dissolve the DNA.
3. Close the tube and incubate for 10 minutes at room temperature.
4. Briefly vortex the tube and then do a quick spin (less than 5000xg) to concentrate the liquid at the bottom.
5. Store the suspended plasmid at -20°C. The DNA is stable for at least one year from date of shipping when stored at -20°C.

RefSeq: [NM_206999.3](#)

RefSeq Size: 5019 bp

RefSeq ORF: 4656 bp

Locus ID: 23019

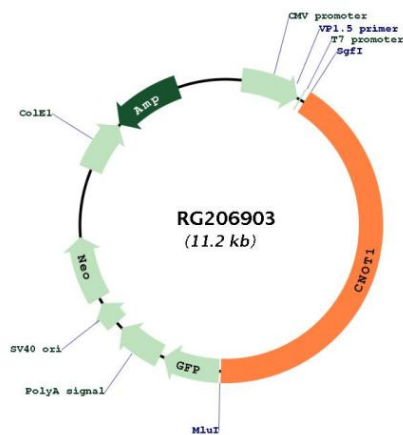
UniProt ID: [A5YKK6](#)

Cytogenetics: 16q21

Protein Pathways: RNA degradation

Gene Summary:

Scaffolding component of the CCR4-NOT complex which is one of the major cellular mRNA deadenylases and is linked to various cellular processes including bulk mRNA degradation, miRNA-mediated repression, translational repression during translational initiation and general transcription regulation. Additional complex functions may be a consequence of its influence on mRNA expression. Its scaffolding function implies its interaction with the catalytic complex module and diverse RNA-binding proteins mediating the complex recruitment to selected mRNA 3' UTRs. Involved in degradation of AU-rich element (ARE)-containing mRNAs probably via association with ZFP36. Mediates the recruitment of the CCR4-NOT complex to miRNA targets and to the RISC complex via association with TNRC6A, TNRC6B or TNRC6C. Acts as a transcriptional repressor. Represses the ligand-dependent transcriptional activation by nuclear receptors. Involved in the maintenance of embryonic stem (ES) cell identity.[UniProtKB/Swiss-Prot Function]

Product images:


Circular map for RG206903