

Product datasheet for **RG206894**

GLIPR1L2 (NM_152436) Human Tagged ORF Clone

Product data:

Product Type: Expression Plasmids
Product Name: GLIPR1L2 (NM_152436) Human Tagged ORF Clone
Tag: TurboGFP
Symbol: GLIPR1L2
Mammalian Cell Selection: Neomycin
Vector: pCMV6-AC-GFP (PS100010)
E. coli Selection: Ampicillin (100 ug/mL)
ORF Nucleotide Sequence: >RG206894 representing NM_152436
 Red=Cloning site Blue=ORF Green=Tags(s)

TTTTGTAATACGACTCACTATAGGGCGGCCGGAATTCGTCGACTGGATCCGGTACCGAGGAGATCTGCC
 GCC**CGATCGCC**

ATGGAGGCCGCAAGGCCCTTCGCCCGGGAGTGGAGGGCCAGTCCCTACCCCTGGCAGTAGGGGGCGTTT
 TGAAGCTGCGGCTCTGTGAGCTGTGGCTACTGCTACTGGGTTCTAGTTGAACGCCAGATTTTTGCCAGA
 CGAGGAGGACGTAGACTTTATCAACGAGTACGTGAACCTCCACAATGAGCTGCGGGGCGACGTATTCCC
 CGAGGGCTAACTTGCCTTCATGACTTGGGATGTAGCTTTATCACGGACTGTAGACATGGGGAAAAA
 AATGTTTGTACGCATAATATTTATTTACAAGATGTACAAATGGTCCATCCTAAATTTTATGGTATTGG
 TGAATAATGTGGGTGCGCCCTGAAAATGAATTTACTGCAAGTATTGCTATCAGAAGTTGGCATGCAGAG
 AAGAAAATGTACAATTTTGAATAATGGCAGTTGCTCTGGAGACTGTTCTAATTATATTTCAGCTTGTGGG
 ACCACTCTTACAAAGTTGGTTGTGCTGTTACTCCATGTTCAAAAATGGACATATTATACATGCAGCAAT
 TTTTATATGCAACTATGCGCCAGGAGGAACACTGACGAGAAGACCTTATGAACCAGGAATATTTGTACT
 CGATGTGGCAGACGTGACAAATGCACAGATTTTCTATGCAGTAAGATAAAGAAAAAAACATGAAAAAAA
 TGCATAATGGATTGGACAAGAAAAATAAGCGATTGAACACTAGTTTTTTATGGTCATGT

ACGCGTACGCGGCCGCTCGAG - GFP Tag - GTTTAA

Protein Sequence: >RG206894 representing NM_152436
 Red=Cloning site Green=Tags(s)

MEAAPFAREWRAQSLPLAVGGVLLKRLCELWLLLLGSSLNARFLPDEEDVDFINEYVNLHNELRGDVIP
 RGSNLRFMWDVALSRTARAWGKKCLFTHNIYLQDVQMVHPKFGIGENMWVGPENEFTASIAIRSWHAE
 KKMYNFENGSCSGDCSNYIQLVWDHSYKVGCAVTPCSKIGHIIHAAIFICNYAPGGTLTRRPYEPGIFCT
 RCGRRDKCTDFLCSKIKKINMKMHNLGDKKNKRLNTSFLWSC

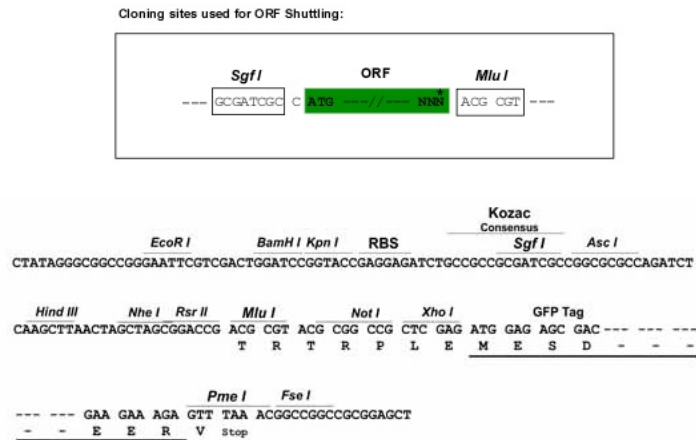
TRTRPLE - GFP Tag - V



[View online »](#)

Restriction Sites: SgfI-MluI

Cloning Scheme:



ACCN: NM_152436

ORF Size: 759 bp

OTI Disclaimer: The molecular sequence of this clone aligns with the gene accession number as a point of reference only. However, individual transcript sequences of the same gene can differ through naturally occurring variations (e.g. polymorphisms), each with its own valid existence. This clone is substantially in agreement with the reference, but a complete review of all prevailing variants is recommended prior to use. [More info](#)

OTI Annotation: This clone was engineered to express the complete ORF with an expression tag. Expression varies depending on the nature of the gene.

Components: The ORF clone is ion-exchange column purified and shipped in a 2D barcoded Matrix tube containing 10ug of transfection-ready, dried plasmid DNA (reconstitute with 100 ul of water).

Reconstitution Method:

1. Centrifuge at 5,000xg for 5min.
2. Carefully open the tube and add 100ul of sterile water to dissolve the DNA.
3. Close the tube and incubate for 10 minutes at room temperature.
4. Briefly vortex the tube and then do a quick spin (less than 5000xg) to concentrate the liquid at the bottom.
5. Store the suspended plasmid at -20°C. The DNA is stable for at least one year from date of shipping when stored at -20°C.

Note: Plasmids are not sterile. For experiments where strict sterility is required, filtration with 0.22um filter is required.

RefSeq: [NM_152436.2](#), [NP_689649.1](#)

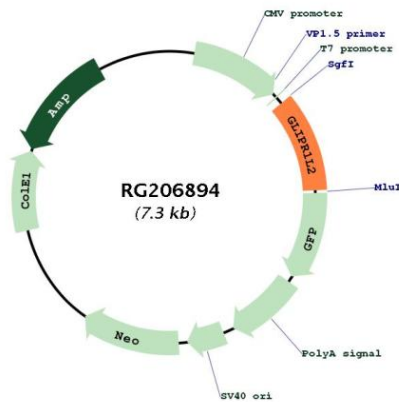
RefSeq Size: 1745 bp

RefSeq ORF: 762 bp

Locus ID: 144321
 UniProt ID: [Q4G1C9](#)
 Cytogenetics: 12q21.2

Gene Summary: This gene encodes a member of the cysteine-rich secretory protein, antigen 5, and pathogenesis-related 1 superfamily. Members of this family have roles in a variety of processes, including cancer and immune defense. This gene is located in a cluster with two related genes on chromosome 12. Alternative splicing results in multiple transcript variants. [provided by RefSeq, Jul 2012]

Product images:



Circular map for RG206894