

Product datasheet for **RG206861**

Gelsolin (GSN) (NM_198252) Human Tagged ORF Clone

Product data:

Product Type:	Expression Plasmids
Product Name:	Gelsolin (GSN) (NM_198252) Human Tagged ORF Clone
Tag:	TurboGFP
Symbol:	GSN
Synonyms:	ADF; AGEL
Mammalian Cell Selection:	Neomycin
Vector:	pCMV6-AC-GFP (PS100010)
E. coli Selection:	Ampicillin (100 ug/mL)



[View online »](#)

ORF Nucleotide
Sequence:

>RG206861 representing NM_198252
 Red=Cloning site Blue=ORF Green=Tags(s)

TTTTGTAATACGACTCACTATAGGGCGGCCGGAATTCGTCGACTGGATCCGGTACCGAGGAGATCTGCC
 GCC**CGGATCGCC**

ATGGCTCCGACCGCCCCGCGCCCGCTGCTTTGCGCGTGTCCCTGGCGCTGTGCGCGTGTGCTGTC
 CCGTCCGCGCGGCCACTGCGTCGCGGGGGCGTCCCAGGCGGGGCGCCCCAGGGCGGGTGCCCGAGGC
 GCGGCCAACAGCATGGTGGTGAACACCCGAGTTCCTCAAGGCAGGGAAGGAGCTGGCTGCAGATC
 TGGCGTGTGGAGAAGTTCGATCTGGTGCCTGCCACCAACCTTTATGGAGACTTCTCACGGGCGACG
 CCTACGTCATCTGAAGACAGTGCAGCTGAGGAACGAAATCTGCAGTATGACCTCCACTACTGGCTGGG
 CAATGAGTGCAGCCAGGATGAGAGCGGGGCGGCCCATCTTTACCGTGCAGCTGGATGACTACCTGAAC
 GGCCGGGCGTGCAGCACCGTGAAGTCCAGGGCTTCGAGTCGGCCACCTTCTAGGCTACTTCAAGTCTG
 GCCTGAAGTACAAGAAAGGAGGTGTGGCATCAGGATCAAGCACGTGGTACCCAACGAGGTGGTGGTGA
 GAGACTTTCAGGTCAAAGGGCGCGTGTGGTCCGTGCCACCGAGGTACCTGTGTCCTGGGAGAGCTTC
 AACAAATGGCGACTGCTTCATCCTGGACCTGGGCAACAACATCCACCAGTGGTGTGGTTCCAACAGCAATC
 GGTATGAAAGACTGAAGGCCACACAGGTGTCCAAGGGCATCCGGGACAACGAGCGGAGTGGCCGGGCCCCG
 AGTGCACGTGTCTGAGGAGGGCACTGAGCCGAGGCGATGCTCCAGGTGCTGGGCCCAAGCCGGCTCTG
 CCTGCAGGTACCGAGGACACCGCAAGGAGGATGCGGCCAACCGCAAGCTGGCCAAGCTCTACAAGTCT
 CCAATGGTGCAGGGACCATGTCCGTCTCCCTCGTGGTGTGAGAACCCCTTCGCCAGGGGGCCCTGAA
 GTCAGAGGACTGCTTCATCCTGGACCACGGCAAAGATGGGAAAATCTTTGTCTGGAAAGGCAAGCAGGCA
 AACACGGAGGAGGAAGGCTGCCCTCAAACAGCCTCTGACTTCATACCAAGATGGACTACCCCAAGC
 AGACTCAGGTCTCGTCTTCTGAGGGCGGTGAGACCCCACTGTTCAAGCAGTCTTCAAGAATCTTCAAG
 GGACCCAGACCAGACAGATGGCCTGGGCTTGTCTACCTTTCCAGCCATATCGCCAACGTGGAGCGGGTG
 CCCTTCGACGCCGCCACCTGCACACCTCCACTGCCATGGCCGCCAGCAGCGCATGGATGACGATGGCA
 CAGGCCAGAAACAGATCTGGAGAATCGAAGGTTCCAACAAGGTGCCCGTGGACCTGCCACATATGGACA
 GTTCTATGGAGGCGACAGCTACATCATTCTGTACAACCTACCGCCATGGTGGCCGCCAGGGGCGAGATAATC
 TATAACTGGCAGGGTGCCAGTCTACCCAGGATGAGGTCGCTGCATCTGCCATCTGACTGCTCAGCTGG
 ATGAGGAGCTGGGAGGTACCCCTGTCCAGAGCCGTGTGGTCCAAGGCAAGGAGCCCGCCACCTCATGAG
 CCTGTTTGGTGGGAAGCCATGATCATCTACAAGGGCGGCACCTCCCGAGGGCGGGCAGACAGCCCT
 GCCAGCACCCGCCTTCCAGGTCCGCGCCAACAGCGCTGGAGCCACCCGGGCTGTTGAGGTATTGCCTA
 AGGCTGGTGCAGTGAACCTCAACGATGCCTTTGTTCTGAAAACCCCTCAGCCGCCTACCTGTGGGTGGG
 TACAGGAGCCAGCGAGGAGAGAGACGGGGGCCAGGAGCTGCTCAGGGTGTGCGGGGCCAACCTGTG
 CAGGTGGCAGAAGGCAGCGAGCCAGATGGCTTCTGGGAGGCCCTGGGCGGGAAGGCTGCCTACCGCACAT
 CCCACGGCTGAAGGACAAGAAGATGGATGCCATCCTCCTCGCCTTTTGCCTGCTCCAACAAGATTGG
 ACGTTTTGTGATCGAAGAGGTTCTGGTGGTGCATGCAGGAAGACCTGGCAACGGATGACGTCATGCTT
 CTGGACACCTGGGACCAGGTCTTTGTCTGGGTTGAAAGGATTCTCAAGAAGAAGAAAAGACAGAAGCCT
 TGACTTCTGCTAAGCGGTACATCGAGACGGACCCAGCCAATCGGGATCGGCGGACGCCATCACCCGTGGT
 GAAGCAAGGCTTTGAGCCTCCCTCTTTGTGGGCTGGTTCCTTGGCTGGGATGATGATTACTGGTCTGTG
 GACCCCTTGGACAGGGCCATGGCTGAGCTGGCTGCC

ACGCGTACGCGGCCGCTCGAG - GFP Tag - GTTTAA

Protein Sequence: >RG206861 representing NM_198252
 Red=Cloning site Green=Tags(s)

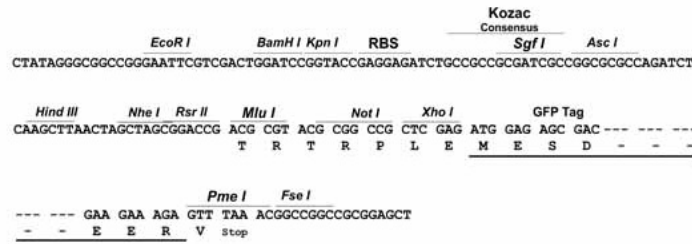
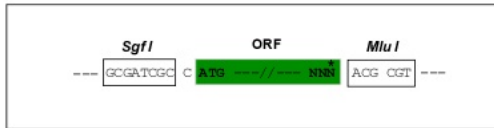
MAPHRPAPALLCALSLALCALSLPVRAATASRGASQAGAPQGRVPEARPNSMVVEHPEFLKAGKEPGLQI
 WRVEKFDLVPVPTNLVYDFFFTGDAYVILKTVQLRNGNLQYDLHYWLGNESQDESGAAAIFTVQLDDYLN
 GRAVQHREVQGFESATFLGYFKSGLKYKKGVA SGFKHVVPNEVVVQRLFQVKGRRVVRATEVPSWESF
 NNGDCFILD LGNNIHQWCGSNSNRYERLKATQVSKGIRDNERSGRARVHVSEEGTEPEAMLQVLGPKPAL
 PAGTEDTAKEDAANRKLAKLYKVSNGAGTMSVSLVADENPFAQGALKSEDCFILDHGKDGKIFVWKGKQA
 NTEERKAALKTASDFITKMDYPKQTQVSVLPEGGETPLFKQFFKNWRDPDQTDGLGLSYLSSHIANVERV
 PFDAATLHTSTAMAAQHGMDDDDGTGQKQIWRIEGSNKVPVDPATYQGQFYGGDSYIILYNYRHGGRQGQII
 YNWQGAQSTQDEVAASAILTAQLDEELGGTPVQSRVVQKKEPAHLSLFGGKPMI IYKGGTSREGGQTAP
 ASTRLFQVRANSAGATRAVELPKAGALNSNDAFVLKTPSAAYLWVG TGASEAEKTAQELLRVLRAQPV
 QVAEGSEPDGFWEALGGKAA YRTSPRLKDKKMDAHPRLFACSNKIGRFVIEEVPGELMQEDLATDDVML
 LDTWDQVFVWVGKDSQEEKTEALTSAKRYIETDPANRDRRTPITVVKQGFEPSPFVGWFLGWDDDYWSV
 DPLDRAMAELAA

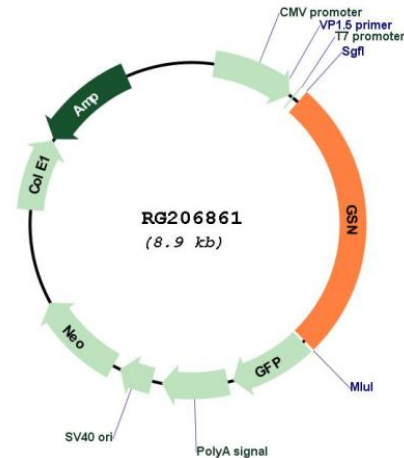
TRTRPLE - GFP Tag - V

Restriction Sites: SgfI-MluI

Cloning Scheme:

Cloning sites used for ORF Shuttling:



Plasmid Map:


ACCN: NM_198252

ORF Size: 2349 bp

OTI Disclaimer: Due to the inherent nature of this plasmid, standard methods to replicate additional amounts of DNA in *E. coli* are highly likely to result in mutations and/or rearrangements. Therefore, OriGene does not guarantee the capability to replicate this plasmid DNA. Additional amounts of DNA can be purchased from OriGene with batch-specific, full-sequence verification at a reduced cost. Please contact our customer care team at custsupport@origene.com or by calling 301.340.3188 option 3 for pricing and delivery.

The molecular sequence of this clone aligns with the gene accession number as a point of reference only. However, individual transcript sequences of the same gene can differ through naturally occurring variations (e.g. polymorphisms), each with its own valid existence. This clone is substantially in agreement with the reference, but a complete review of all prevailing variants is recommended prior to use. [More info](#)

OTI Annotation: This clone was engineered to express the complete ORF with an expression tag. Expression varies depending on the nature of the gene.

Components: The ORF clone is ion-exchange column purified and shipped in a 2D barcoded Matrix tube containing 10ug of transfection-ready, dried plasmid DNA (reconstitute with 100 ul of water).

Reconstitution Method:

1. Centrifuge at 5,000xg for 5min.
2. Carefully open the tube and add 100ul of sterile water to dissolve the DNA.
3. Close the tube and incubate for 10 minutes at room temperature.
4. Briefly vortex the tube and then do a quick spin (less than 5000xg) to concentrate the liquid at the bottom.
5. Store the suspended plasmid at -20°C. The DNA is stable for at least one year from date of shipping when stored at -20°C.

RefSeq:	NM_198252.2 , NP_937895.1
RefSeq Size:	2685 bp
RefSeq ORF:	2196 bp
Locus ID:	2934
UniProt ID:	P06396
Cytogenetics:	9q33.2
Protein Families:	Druggable Genome, Secreted Protein
Protein Pathways:	Fc gamma R-mediated phagocytosis, Regulation of actin cytoskeleton
Gene Summary:	The protein encoded by this gene binds to the "plus" ends of actin monomers and filaments to prevent monomer exchange. The encoded calcium-regulated protein functions in both assembly and disassembly of actin filaments. Defects in this gene are a cause of familial amyloidosis Finnish type (FAF). Multiple transcript variants encoding several different isoforms have been found for this gene. [provided by RefSeq, Jul 2008]