

Product datasheet for **RG206847**

PAK4 (NM_001014831) Human Tagged ORF Clone

Product data:

Product Type:	Expression Plasmids
Product Name:	PAK4 (NM_001014831) Human Tagged ORF Clone
Tag:	TurboGFP
Symbol:	PAK4
Mammalian Cell Selection:	Neomycin
Vector:	pCMV6-AC-GFP (PS100010)
E. coli Selection:	Ampicillin (100 ug/mL)



[View online »](#)

ORF Nucleotide Sequence:

>RG206847 representing NM_001014831
 Red=Cloning site Blue=ORF Green=Tags(s)

TTTTGTAATACGACTCACTATAGGGCGGCCGGAATTCGTCGACTGGATCCGGTACCGAGGAGATCTGCC
 GCC**CGCATCGCC**

ATGTTTGGGAAGAGGAAGAAGCGGGTGGAGATCTCCGCGCGTCCAACCTCGAGCACCGCTGCACACGG
 GCTTCGACCAGCACGAGCAGAAGTTCACGGGGCTGCCCCGCCAGTGGCAGAGCCTGATCGAGGAGTCGGC
 TCGCCGGCCCAAGCCCTCGTCGACCCCGCTGCATCACCTCCATCCAGCCCGGGGCCCAAGACCATC
 GTGCGGGGCAGCAAAGGTGCAAAGATGGGGCCCTCACGCTGCTGCTGGACGAGTTTGAACATGTCGG
 TGACACGCTCCAACCTCCCTGCGGAGAGACAGCCCGCCCGCCCGCCCGTCCCGCCAGGAAATGGGAT
 GCCAGAGGAGCCGGCCACCACGGCCAGAGGGGGCCAGGGAAGGCAGGCAGCCGAGGCGGTTCCGCCGT
 CACAGCGAGGCGGGTGGCGGCAGTGGTACAGGCGACGGCGGGGCCAGAGAAGAGGCCAAAGTCTTCCA
 GGGAGGGCTCAGGGGTCCTCCAGGAGTCTCCCGGACAAACGCCCTCTCCGGCCTGATGTCGGCAC
 CCCCCAGCTGCTGGTCTGGCCAGTGGGCGAAACTGGCAGCTGGCCGGCCCTTTAACACCTACCGAGG
 GCTGACACGGACCACCATCCCGGGTGCACAGGGGGAGCCTCATGACGTGGCCCTAACCGGCCATCAG
 CGGGGGCCTGGCCATCCCCAGTCT
 CAGCCCTGGAGTCTGGGACCCACGCCTCAGAGCCAGCTGGCCCTCCAGCCTGCACCCCGCCGCC
 CCTGCTGTTCTGGGCCCCCTGGCCCCGCTCACCACAGCGGGAGCCACAGCGAGTATCCATGAGCAGT
 TCCGGGCTGCCCTGCAGCTGGTGGTGGACCCAGGCGACCCCGCTCTACCTGGACAACCTCATCAAGAT
 TGGCGAGGGTCCACGGGCATCGTGTGCATCGCCACCGTGGCAGCTCGGGCAAGCTGGTGGCCGTCAAG
 AAGATGGACCTGCGCAAGCAGCAGAGGCGGAGCTGCTTCAACGAGGTGGTAAATCATGAGGGACTACC
 AGCAGGAGAATGTGGTGGAGATGTACAACAGTACCTGGTGGGGGACGAGCTCTGGGTGGTCAAGATT
 CCTGGAAGGAGGCCCTCACCAGACATCGTCACCCACACCAGGATGAACGAGGAGCAGATCGCGGCCGTG
 TGCCCTGCAGTGTGCAGGCCCTGTCGGTGTCCACGCCAGGGCGTCATCCACCGGACATCAAGAGCG
 ACTCGATCTGCTGACCCATGATGGCAGGGTGAAGCTGTCAGACTTTGGTTCTGCGCCAGGTGAGCAA
 GGAAGTGCCTCGAAGGAAGTCGCTGGTGGCAGCCCTACTGGATGGCCCAGAGCTCATCTCCGCCTT
 CCCTACGGCCAGAGGTAGACATCTGGTCGCTGGGGATAATGGTATTGAGATGGTGGACGGAGAGCCCC
 CCTACTTCAACGAGCCACCCCTCAAAGCCATGAAGATGATTCGGGACAACCTGCCACCCGACTGAAGAA
 CCTGCACAAGGTGTCGCATCCCTGAAGGGCTTCTGGACCGCTGCTGGTGGCAGACCTGCCAGCGG
 GCCACGGCAGCCGAGCTGCTGAAGCACCATTCTGGCCAAGGCAGGGCCGCTGCCAGCATCGTCCCC
 TCATGCGCCAGAACCGCACCAAGA

ACGCGTACGCGGCCGCTCGAG - GFP Tag - GTTTAA

Protein Sequence:

>RG206847 representing NM_001014831
 Red=Cloning site Green=Tags(s)

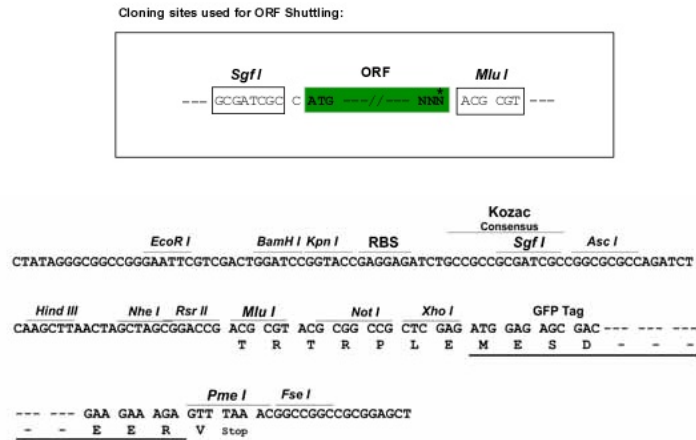
MFGKRKRVEISAPSNFEHRVHTGFDQHEQKFTGLPRWQSLIEESARRPKPLVDPACITSIQPGAPKTI
 VRGSKGAKDGALTLLLDEFENMSVTRSNLRRDSPPPPARARQENGMPEEPATTARGGPGKAGSRGRFAG
 HSEAGGGSGDRRRAGPEKRPKSSREGSGGPQESSRDKRPLSGPDVGTQPAGLASGAKLAAGRPFNTYPR
 ADTDHPSRGAQGEPHDVAPNGPSAGGLAIPQSSSSSRPPTRRARGAPSPGVLGPHASEPQLAPPACTPAA
 PAVPGPPGPRSPQREPQRVSHEQFRAALQLVVDPGDPRS YLDFNFKIGEGSTGIVCIATVRSSGKLVAVK
 KMDLRKQQRRELLFNEVVIMRDYQHENVEMYSYLVDLWVMEFLEGGALTDIVTHTRMNEEQIAAV
 CLAVLQALSVLHAQGVHRDIKSDSILLTHDGRVKLSDFGFCQAQVSKEVPRRKS LVTPTPYWMAPELISRL
 PYGPEVDIWSLGIMVIEMVDGEPPYFNPEPLKAMKMIRDNLPPRLKNLHKVSPSLKGFDRLLVRDPAQR
 ATAAELLKHPFLAKAGPPASIVPLMRQRTR

TRTRPLE - GFP Tag - V

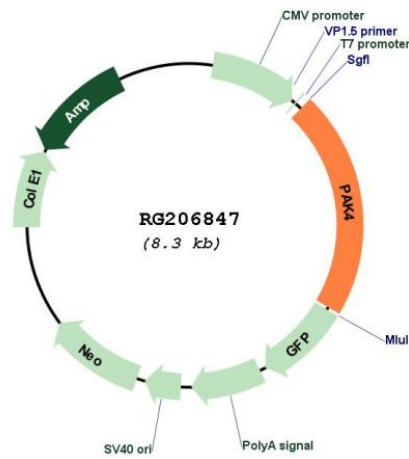
Restriction Sites:

Sgfl-MluI

Cloning Scheme:



Plasmid Map:



ACCN:

NM_001014831

ORF Size:	1773 bp
OTI Disclaimer:	The molecular sequence of this clone aligns with the gene accession number as a point of reference only. However, individual transcript sequences of the same gene can differ through naturally occurring variations (e.g. polymorphisms), each with its own valid existence. This clone is substantially in agreement with the reference, but a complete review of all prevailing variants is recommended prior to use. More info
OTI Annotation:	This clone was engineered to express the complete ORF with an expression tag. Expression varies depending on the nature of the gene.
Components:	The ORF clone is ion-exchange column purified and shipped in a 2D barcoded Matrix tube containing 10ug of transfection-ready, dried plasmid DNA (reconstitute with 100 ul of water).
Reconstitution Method:	<ol style="list-style-type: none">1. Centrifuge at 5,000xg for 5min.2. Carefully open the tube and add 100ul of sterile water to dissolve the DNA.3. Close the tube and incubate for 10 minutes at room temperature.4. Briefly vortex the tube and then do a quick spin (less than 5000xg) to concentrate the liquid at the bottom.5. Store the suspended plasmid at -20°C. The DNA is stable for at least one year from date of shipping when stored at -20°C.
RefSeq:	NM_001014831.3
RefSeq Size:	3064 bp
RefSeq ORF:	1776 bp
Locus ID:	10298
UniProt ID:	O96013
Cytogenetics:	19q13.2
Protein Families:	Druggable Genome, Protein Kinase
Protein Pathways:	Axon guidance, ErbB signaling pathway, Focal adhesion, Regulation of actin cytoskeleton, Renal cell carcinoma, T cell receptor signaling pathway
Gene Summary:	PAK proteins, a family of serine/threonine p21-activating kinases, include PAK1, PAK2, PAK3 and PAK4. PAK proteins are critical effectors that link Rho GTPases to cytoskeleton reorganization and nuclear signaling. They serve as targets for the small GTP binding proteins Cdc42 and Rac and have been implicated in a wide range of biological activities. PAK4 interacts specifically with the GTP-bound form of Cdc42Hs and weakly activates the JNK family of MAP kinases. PAK4 is a mediator of filopodia formation and may play a role in the reorganization of the actin cytoskeleton. Multiple alternatively spliced transcript variants encoding distinct isoforms have been found for this gene. [provided by RefSeq, Jul 2008]