

Product datasheet for **RG206842**

UTP18 (NM_016001) Human Tagged ORF Clone

Product data:

Product Type:	Expression Plasmids
Product Name:	UTP18 (NM_016001) Human Tagged ORF Clone
Tag:	TurboGFP
Symbol:	UTP18
Synonyms:	CGI-48; WDR50
Mammalian Cell Selection:	Neomycin
Vector:	pCMV6-AC-GFP (PS100010)
E. coli Selection:	Ampicillin (100 ug/mL)



[View online »](#)

ORF Nucleotide Sequence:

>RG206842 representing NM_016001
 Red=Cloning site Blue=ORF Green=Tags(s)

TTTTGTAATACGACTCACTATAGGGCGGCCGGAATTCGTCGACTGGATCCGGTACCGAGGAGATCTGCC
 GCC**CGCATCGCC**

ATGCCCGGAGCGGAGGAGACGAATGAACTGGACCGGAGAACCGGAGCGAAGCCGAAGCGGAAGCCCC
 GAATGAGCGCGGACTGGAAAGCCGGAGCGGGCCAGGCGGGCCTCCCAAAGCCTGCCCTTCATCCCA
 GCGGAAACCGCCGGCCCGGCGGAGCGCGCGGCGCTGCGATTGCAAGTCGCGGCGCGGAGGAAGAGAGA
 CGGCTCCGGCAGCGAACCCTGAGGCTGGAGGAGGACAAACCGGCCGTGGAGCGGTGCTTGGAGGAGC
 TGGTCTTCGGCGACGTCGAGAACGACGAGGACGCGTTGCTGCGGCGTCTGCGAGGCCGAGGGTTCAAGA
 ACATGAAGACTCGGGTACTCAGAAGTGGAGAATGAAGCAAAAGGTAATTTCCACCTCAAAGAAGCCA
 GTTTGGTGGATGAAGAAGATGAAGATGAGGAAATGGTTGACATGATGAACAATCGGTTTCGGAAGGATA
 TGATGAAAAATGCTAGTAAAGTAACTTTCGAAAGACAACCTTAAAAAGAGACTTAAAGAAGAATCCA
 ACATGCCATGGGAGGAGTACCTGCCTGGCAGAGACTACTAAGCGGAAAACATCTTCAGATGATGAAGT
 GAAGAGGATGAAGATGATTTGTTGCAAAGGACTGGGAATTCATATCCACATCAACTTCTCTTCCAAGG
 GCATCTTGAAGATGAAGAACTGCCAGCATGCGAATGCTGAACGTCCTACTGTTGCTCGGATCTCATCTGT
 GCAGTTCCATCCCGGTGCACAGATTGTGATGGTTGCTGGATTAGATAATGCTGTACTACTATTTCAAGTT
 GATGGGAAAACAAATCCTAAAATTCAGAGCATCTATTTGGAAAGGTTTCCAATCTTAAAGCTTGTTTTA
 GTGCTAATGGGGAAGAAGTTTTAGCCACGAGTACCCACAGCAAGGTTCTTTATGTCTATGACATGCTGGC
 TGGAAAGTTAATTCCTGTGCATCAAGTGAAGGTTTGAAGAGAAGATAGTGAGGAGCTTGAAGTCTCC
 CCAGATGGTCTTCTTGCTCATAAATGGCATTGCTGGATATTTGCATTTGCTAGCAATGAAGACAAAAG
 AACTGATTTGAAGCATGAAAATTAATGGAAGGTTGACGATCCACATTCTTTCAGATGAAGAAGT
 ATACGCCCTTTCGGGGATGGAGAAGTTTATGTTGGGATGTGAACCAAGGAAGTGCCTAACAGATTT
 GTTGATGAAGGCAGTTTATATGGATTAAGCATTGCCACATCTAGGAATGGACAGTATGTTGCTTGTTGTT
 CTAATTGTGGAGTGGTAAATATATAACAATCAAGATTCTTGTCTCCAAGAAAACAAACCCAAAGCCAATAAA
 AGCTATAATGAACCTGGTTACAGGTGTTACTTCTCTGACCTCAATCCTACTACAGAAATCTTGGCAATT
 GCTTCAGAAAAAATGAAAGAAGCAGTCAAGATTGGTTTCTCTTCTCTGTACAGATTTTCAAACCTTCC
 CAGTCATAAAAATAAGAATATTTCTCATGTTCCATACCATGGATTTTCTCCGAGAAGTGGATACTTGC
 CTTGGGGAATGAAAAGGCAAGGCCCTGATGTATAGTTGCACCATTACTCAGACTTC

AGCGGACCGACGCGTACGCGGCCGCTCGAG - GFP Tag - GTTTAA

Protein Sequence:

>RG206842 representing NM_016001
 Red=Cloning site Green=Tags(s)

MPPERERRMKLDRRTGAKPKRKPGRPDWKAGAGPGPPQKPAPSSQRKPPARPSAAAAAIAVAAEEER
 RLRQRNRLLEEDKPAVERCLEELVFGDVENDEALLRRLRGPRVQEHEDSGDSEVENEAKGNFPPQKPP
 VVWDEEDEDEEMVDMNRFKDMKNASESKLSKDNLKKRLKEEFQHAMGGVPAWAETTKRKTSSDDES
 EEDEDLLQRTGNFISTSTSLPRGILKMKNCQHANAERPTVARISSVQFHPGAQIVMAGLDNAVSLFQV
 DGKTNPKIQSIYLERFPIFKACFSANGEEVLATSTHVKLVVYDMLAGKLIQVHVQVRLKEKIVRSFEVS
 PDGSFLLINGIAGYLHLLAMKTKELIGSMKINGRVAASTFSSDSKKVYASSGDGEVYVWDVNSRKLNR
 VDEGSLYGLSIATSRNGQYVACGSNCGVNIYNQDSCLQETNPKPIKAIMNLVTGVTSLTFNPTTEILAI
 ASEKMKAVRLVHLPSCVFSNFPVIKKNISHVHTMDFSPRSGYFALGNEKGKALMYRLHHYSDF

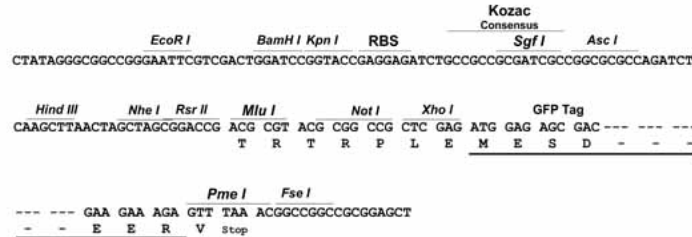
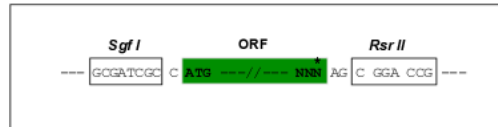
SGPTRRRLE - GFP Tag - V

Restriction Sites:

Sgfl-RsrII

Cloning Scheme:

Cloning sites used for ORF Shuttling:


ACCN: NM_016001

ORF Size: 1668 bp

OTI Disclaimer: The molecular sequence of this clone aligns with the gene accession number as a point of reference only. However, individual transcript sequences of the same gene can differ through naturally occurring variations (e.g. polymorphisms), each with its own valid existence. This clone is substantially in agreement with the reference, but a complete review of all prevailing variants is recommended prior to use. [More info](#)

OTI Annotation: This clone was engineered to express the complete ORF with an expression tag. Expression varies depending on the nature of the gene.

Components: The ORF clone is ion-exchange column purified and shipped in a 2D barcoded Matrix tube containing 10ug of transfection-ready, dried plasmid DNA (reconstitute with 100 ul of water).

Reconstitution Method:

1. Centrifuge at 5,000xg for 5min.
2. Carefully open the tube and add 100ul of sterile water to dissolve the DNA.
3. Close the tube and incubate for 10 minutes at room temperature.
4. Briefly vortex the tube and then do a quick spin (less than 5000xg) to concentrate the liquid at the bottom.
5. Store the suspended plasmid at -20°C. The DNA is stable for at least one year from date of shipping when stored at -20°C.

RefSeq: [NM_016001.2](#), [NP_057085.2](#)
RefSeq Size: 1893 bp

RefSeq ORF: 1671 bp

Locus ID: 51096

UniProt ID: [Q9Y5J1](#)

Cytogenetics: 17q21.33
 Domains: WD40
 Gene Summary: Involved in nucleolar processing of pre-18S ribosomal RNA.[UniProtKB/Swiss-Prot Function]

Product images:



Circular map for RG206842