

## Product datasheet for **RG206834**

### **RAB20 (NM\_017817) Human Tagged ORF Clone**

#### Product data:

Product Type:	Expression Plasmids
Product Name:	RAB20 (NM_017817) Human Tagged ORF Clone
Tag:	TurboGFP
Symbol:	RAB20
Mammalian Cell Selection:	Neomycin
Vector:	pCMV6-AC-GFP (PS100010)
E. coli Selection:	Ampicillin (100 ug/mL)
ORF Nucleotide Sequence:	>RG206834 representing NM_017817 Red=Cloning site Blue=ORF Green=Tags(s)

TTTTGTAATACGACTCACTATAGGGCGGCCGGAATTCGTCGACTGGATCCGGTACCGAGGAGATCTGCC  
GCC**CGATCGCC**

ATGAGGAAGCCCGACAGCAAGATCGTGCTCCTGGGGACATGAACGTGGGAAGACGTGCTGCTGCAGC  
GGTATATGGAGCGGCGCTTCCCGACACGGTCAGCACGGTGGCGGGCGCCTTCTACCTGAAGCAGTGGCG  
CTCCTACAACATCTCCATCTGGGACACCGCAGGGCGGGAGCAGTCCACGGCCTGGGCTCCATGTACTGC  
CGGGGGCGGCCCATCATCTCACCTATGATGTGAATCACCGCAGAGCCTGGTGGAGCTGGAGGACC  
GGTTCTGGGCTGACAGACACAGCCAGCAAGACTGCCTTTCGCCATCGTGGGAACAAGAGTGGACCT  
CACTGAGGAGGGGCGCTTGGCGGCCAGGAGAAGGAAGAGTGCAGTCCCAATATGGACGCTGGGGACCGT  
GTCTCCCAAGGGCACCTAAGCAGGTGCAGCTGGAGGATGCGGTGGCCCTTTATAAAAAGATCCTCAAGT  
ACAAGATGCTGGATGAGCAGGATGTGCCGGCGCTGAGCAAATGTGCTTTGAGACCAGCGCAAGACCGG  
CTACAATGTGGACCTCTGTTTGAGACCCTCTTTGACCTGGTGGTCCAATGATCTTACAGCAGAGAGCT  
GAGAGGCCGTACACACAGTGGATATATCCAGTCATAAGCCACCAAGAGGACCAGATCTGGGTGTTGTG  
CC

**ACGCGT**ACGCGGCCGCTCGAG - GFP Tag - GTTTAA

Protein Sequence:	>RG206834 representing NM_017817 Red=Cloning site Green=Tags(s)
-------------------	--

MRKPDSKIVLLGDMNVGKTSLLQRYMERRFPDVTSTVGGAFYLKQWRSYNISIWDTAGREQFHGLGSMYC  
RGAIIILTYDVNHRQSLVELEDRFLGLTDTASKDCLFAIVGNKVDLTEEGALAGQEKEECPNMDAGDR  
VSPRAPKQVQLEDAVALYKILKYLKMLDEQDVPAAEQMCFETSAKTGYNVDLLFETLFDLVVPMILQORA  
ERPSHTVDISSHKPPKTRSGCCA

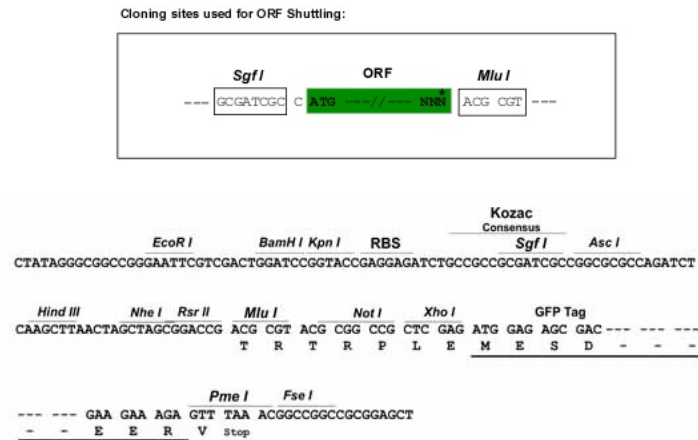
**TRTRPLE** - GFP Tag - V



[View online »](#)

**Restriction Sites:** SgfI-MluI

**Cloning Scheme:**



**ACCN:** NM\_017817

**ORF Size:** 702 bp

**OTI Disclaimer:** The molecular sequence of this clone aligns with the gene accession number as a point of reference only. However, individual transcript sequences of the same gene can differ through naturally occurring variations (e.g. polymorphisms), each with its own valid existence. This clone is substantially in agreement with the reference, but a complete review of all prevailing variants is recommended prior to use. [More info](#)

**OTI Annotation:** This clone was engineered to express the complete ORF with an expression tag. Expression varies depending on the nature of the gene.

**Components:** The ORF clone is ion-exchange column purified and shipped in a 2D barcoded Matrix tube containing 10ug of transfection-ready, dried plasmid DNA (reconstitute with 100 ul of water).

- Reconstitution Method:**
1. Centrifuge at 5,000xg for 5min.
  2. Carefully open the tube and add 100ul of sterile water to dissolve the DNA.
  3. Close the tube and incubate for 10 minutes at room temperature.
  4. Briefly vortex the tube and then do a quick spin (less than 5000xg) to concentrate the liquid at the bottom.
  5. Store the suspended plasmid at -20°C. The DNA is stable for at least one year from date of shipping when stored at -20°C.

**RefSeq:** [NM\\_017817.1](#), [NP\\_060287.1](#)

**RefSeq Size:** 1530 bp

**RefSeq ORF:** 705 bp

**Locus ID:** 55647

**UniProt ID:** [Q9NX57](#)

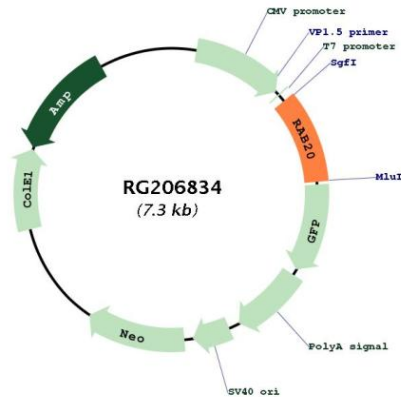
**Cytogenetics:** 13q34

**Domains:** ras, RAS, RHO, RAB

**Protein Families:** Druggable Genome

**Gene Summary:** Plays a role in apical endocytosis/recycling. Plays a role in the maturation and acidification of phagosomes that engulf pathogens, such as S.aureus and M.tuberculosis. Plays a role in the fusion of phagosomes with lysosomes.[UniProtKB/Swiss-Prot Function]

**Product images:**



Circular map for RG206834