

## Product datasheet for **RG206752**

### PRR18 (NM\_175922) Human Tagged ORF Clone

#### Product data:

Product Type: Expression Plasmids  
 Product Name: PRR18 (NM\_175922) Human Tagged ORF Clone  
 Tag: TurboGFP  
 Symbol: PRR18  
 Mammalian Cell Selection: Neomycin  
 Vector: pCMV6-AC-GFP (PS100010)  
 E. coli Selection: Ampicillin (100 ug/mL)  
 ORF Nucleotide Sequence: >RG206752 representing NM\_175922  
 Red=Cloning site Blue=ORF Green=Tags(s)

TTTTGTAATACGACTCACTATAGGGCGGCCGGGAATTCGTCGACTGGATCCGGTACCGAGGAGATCTGCC  
 GCC**CGATCGCC**

ATGCCCTTCCCGCCATGCCGCCGCCGCCGCCGCCGCCCGGGGGCCCAAGCCGCGCGCCAGTTACCC  
 GGAGGCCCTGCGCCGCGGGGACAAGAAGAAGAGGCCCCACAGCGGCCCGAGGGCTCCTCTCCAGCTC  
 CTGGCCCTCCGCCACGCTCAAGAGGCCGCCGCCGCCGCCGCCGCCCGGCTGGACAGGACGACGCCGCC  
 GCCCTCCGGGCGTCTCCCCCAGGCTTGCCAGCCGCGCGGGGCCAGCCACGTGCGCCCCGCC  
 GGCCGGCAGGCTCCGGCCACAGCCAGCGAGGACCACCTATGCGCGACCTCGGCGGGACGGGGACCAC  
 CGCCGCGGGCACCTCCTCGGGGCGGGGCTTGTCCAGACTCCGCTGCGGCTTCTGCCTGAATCTCACC  
 CCCGAGGCCGTCTGGTCATCCAGAAGCGTCATCTGGAGAAGCAGCTGCTGGCGGGCCCGCAGGCCCT  
 TCCCTCACCTCGGCCGAACCCAGGCGCTACTCGCCCGTGTCTCCGGCTAGGGCCGCGGGCCCGCG  
 GAGGGGCGGCCCGCCAGCGACCCGACGACCCCGCCCGCGGCGAGGGCCGCGCGCCTCCGCC  
 GGCGCCAGCTGCTGCACGGCGCTGCAGTTCCCCAGCTCAGCCCGGGCCCGGGCCCTGCGGCCGA  
 TGCTCAAGGTGCTGCTCAACGAGCGGCACAGGTACGACGACGTGGAGTACGAGGAGGAGCCAGAGGC  
 GGTGGACGAGGGCTGTCGCAAGTGCACGGAGTGGTGCAGCGCGTGGAGTCCGCGGCTGCCCGCGG  
 GGCCGGGGGGGCCCTGGACTACGGCGCACCTGAGCACGCTG

ACGCGTACGCGGCCGCTCGAG - GFP Tag - GTTTAA



[View online »](#)

**Protein Sequence:** >RG206752 representing NM\_175922  
 Red=Cloning site Green=Tags(s)

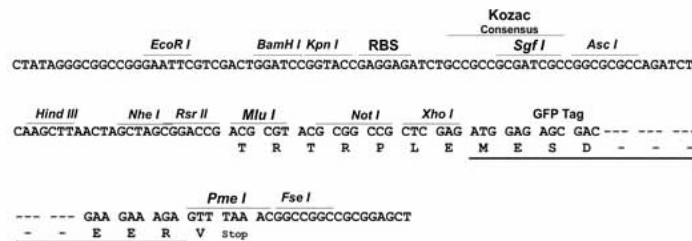
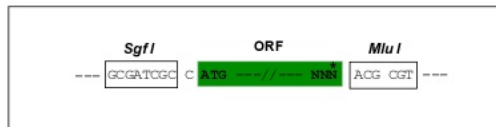
MPFPPMPPPPAPAPGAQAARQLPRRCAAGDKKRPPQRPEGLSSSWPSATLKRPPARRGPGLDRTQPP  
 APPGVSPQALPSRARAPATCAPPRPAGSGHSPARTTYAATSAGTGTTAAGTSSGAGPCPDSAARFCLNLT  
 PEAVLVIQKRHLEKQLLARPRRPFSPSAEPRRLAPCLPARAAGPRRGGPASDPDAPPTAGQGRRAPPP  
 GAQLLHGGLQVPQLSPRPGALRPMLKVSLNLERHRYDDVEYEEPEAVDEGLVRKCTEWLRGVESAAAAAR  
 GRAGALDSRRHLSTL

TRTRPLE - GFP Tag - V

**Restriction Sites:** SgfI-MluI

**Cloning Scheme:**

Cloning sites used for ORF Shutting:



**ACCN:** NM\_175922

**ORF Size:** 885 bp

**OTI Disclaimer:** The molecular sequence of this clone aligns with the gene accession number as a point of reference only. However, individual transcript sequences of the same gene can differ through naturally occurring variations (e.g. polymorphisms), each with its own valid existence. This clone is substantially in agreement with the reference, but a complete review of all prevailing variants is recommended prior to use. [More info](#)

**OTI Annotation:** This clone was engineered to express the complete ORF with an expression tag. Expression varies depending on the nature of the gene.

**Components:** The ORF clone is ion-exchange column purified and shipped in a 2D barcoded Matrix tube containing 10ug of transfection-ready, dried plasmid DNA (reconstitute with 100 ul of water).

**Reconstitution Method:**

1. Centrifuge at 5,000xg for 5min.
2. Carefully open the tube and add 100ul of sterile water to dissolve the DNA.
3. Close the tube and incubate for 10 minutes at room temperature.
4. Briefly vortex the tube and then do a quick spin (less than 5000xg) to concentrate the liquid at the bottom.
5. Store the suspended plasmid at -20°C. The DNA is stable for at least one year from date of shipping when stored at -20°C.

**RefSeq:** [NM\\_175922.4](#)

**RefSeq Size:** 2704 bp

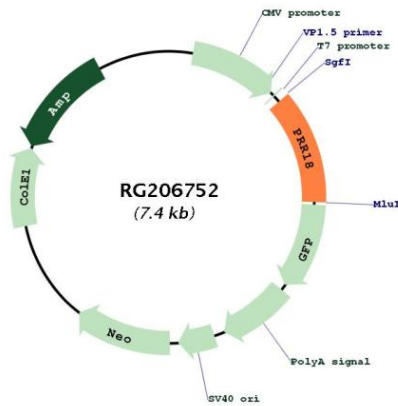
**RefSeq ORF:** 888 bp

**Locus ID:** 285800

**UniProt ID:** [Q8N4B5](#)

**Cytogenetics:** 6q27

**Product images:**



Circular map for RG206752