

## Product datasheet for **RG206735**

### IGSF11 (NM\_152538) Human Tagged ORF Clone

#### Product data:

Product Type:	Expression Plasmids
Product Name:	IGSF11 (NM_152538) Human Tagged ORF Clone
Tag:	TurboGFP
Symbol:	IGSF11
Synonyms:	BT-IgSF; CT119; CXADRL1; Igsf13; VSIG3
Mammalian Cell Selection:	Neomycin
Vector:	pCMV6-AC-GFP (PS100010)
E. coli Selection:	Ampicillin (100 ug/mL)
ORF Nucleotide Sequence:	>RG206735 representing NM_152538 Red=Cloning site Blue=ORF Green=Tags(s)

TTTTGTAATACGACTCACTATAGGGCGCCGGGAATTCGTCGACTGGATCCGGTACCGAGGAGATCTGCC  
GCC**CGATCGCC**

ATGTCTCTGGTGGAACTTTTGCTCTGGTGGAACTGCTTTTCTAGAACTGGTGTTCAGCATCCCTGGAAG  
TGTCAGAGAGCCCTGGGAGTATCCAGGTGGCCCGGGTTCAGACAGCAGTCTGCCCTGCACTTTCACTAC  
CAGCGTGCCTCATTAACTCAATGTCATTTGGATGGTCACTCCTCTCCAATGCCAACCAACCTGAA  
CAGGTCATCCTGTATCAGGGTGGACAGATGTTTGGTGGCCCCGGTCCACGGTAGGGTAGGATTTA  
CAGGCACCATGCCAGCTACCAATGTCTCTATCTTCAATAAACACTCAGTTATCAGACTGGCACCTA  
CCAGTGCCTGGTCAACAACCTTCCAGACATAGGGGCGAGGAACATTGGGGTCAACGGTCTCACAGTGTA  
GTTCCCCCTTCTGCCCCACTGCCAAATCCAAGGATCCCAGGATATTGGCAGCGATGTCATCCTGCTCT  
GTAGCTCAGAGGAAGGCATTCTCGACCACTTACCTTTGGGAGAAGTTAGACAATACCCTCAAACCTACC  
TCCAACAGCTACTCAGGACCAGTCCAGGGAACAGTCACCATCCGGAACATCAGTGCCCTGTCTTCAGGT  
TTGTACCAGTGCCTGGCTTCTAATGCTATTGGAACCAGCACCTGTCTTCTGGATCCTCAGGTTATTTAC  
CCCAGCCAGGAACATTGGACTAATAGCTGGAGCCATTGGCACTGGTGCAGTTATATCATTTTTTGCAT  
TGCACTAATTTTAGGGCATTCTTTACTGGAGAAGCAAAAATAAAGAGGAGGAAGAAGAAGAAATTCCT  
AATGAAATAAGAGAGGATGATCTTCCACCAAGTGTCTTCTGCCAAAGCATTTCACACTGAGATTTCTC  
CCTCGGACAACAACACTAACCTCTTCCAATGCCTACAACAGTCGATACTGGAGCAACAATCCAAAAGT  
TCATAGAAAACACAGAGTCAGTCAGCCACTTCAGTGACTTGGGCCAATCTTTCTTTTCACTCAGGCAAT  
GCCAACATACCATCCATTTATGCTAATGGGACCCATCTGGTCCCGGGTCAACATAAGACTCTGGTAGTGA  
CAGCCAACAGAGGGTCATCACCACAGGTGATGTCCAGGAGCAATGGCTCAGTCAGTAGGAAGCCTCGGCC  
TCCACACTCATTCTACACATCAGCCACGCAACACTGGAACGAATTGGTGCAGTACCTGTCATGGTA  
CCAGCCCAGAGTCGGGCCGGTCTTGTA

**ACCGTACGGCCGCTCGAG** - GFP Tag - GTTTAA



[View online »](#)

**Protein Sequence:** >RG206735 representing NM\_152538  
Red=Cloning site Green=Tags(s)

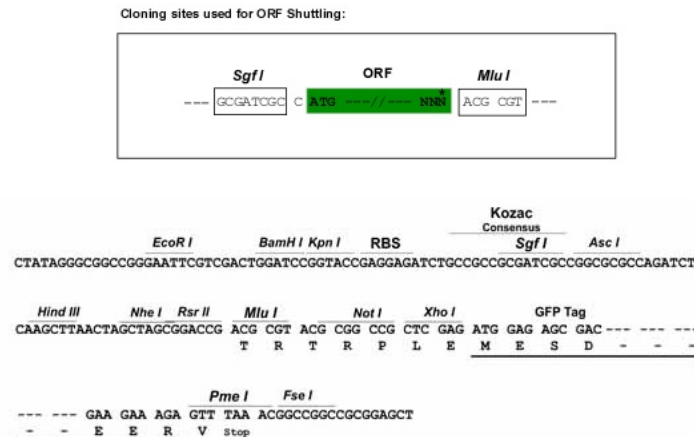
```
MSLVELLWVWVNCFSRTGVAASLEVSESPGSIQVARGQTAVLPCTFTTSAALINLNVIMVTPLSNANQPE
QVILYQGGQMFDPGRFHFGRVGFGTMPATNVSIFINNTQLSDTGTQCLVNNLPDGGRNIGVTGLTVL
VPPSAPHCQIQGSDIGSDVILLCSSEEGIPRPTYLWEKLDNTLKLPTATQDQVQGTVTIRNISALSSG
LYQCVASNAIGTSTCLLDLQVISPQPRNIGLIAGAIGTGAVIIIFCIALILGAFFYWRSKNKEEEEEIIP
NEIREDDLPPKCSSAKAFHTEISSDNNTLTSSNAYNSRYWSNPKVHRNTESVSHFSDLGQSFHSGN
ANIPSIYANGTHLVPGQHKTLVVTANRGSSPQVMSRSNGSVSRKPRPPHSTYSYIISHATLERIGAVPVMV
PAQSRAGSLV
```

TRTRPLE - GFP Tag - V

**Restriction Sites:**

SgfI-MluI

**Cloning Scheme:**



**ACCN:** NM\_152538

**ORF Size:** 1290 bp

**OTI Disclaimer:** The molecular sequence of this clone aligns with the gene accession number as a point of reference only. However, individual transcript sequences of the same gene can differ through naturally occurring variations (e.g. polymorphisms), each with its own valid existence. This clone is substantially in agreement with the reference, but a complete review of all prevailing variants is recommended prior to use. [More info](#)

**OTI Annotation:** This clone was engineered to express the complete ORF with an expression tag. Expression varies depending on the nature of the gene.

**Components:** The ORF clone is ion-exchange column purified and shipped in a 2D barcoded Matrix tube containing 10ug of transfection-ready, dried plasmid DNA (reconstitute with 100 ul of water).

**Reconstitution Method:**

1. Centrifuge at 5,000xg for 5min.
2. Carefully open the tube and add 100ul of sterile water to dissolve the DNA.
3. Close the tube and incubate for 10 minutes at room temperature.
4. Briefly vortex the tube and then do a quick spin (less than 5000xg) to concentrate the liquid at the bottom.
5. Store the suspended plasmid at -20°C. The DNA is stable for at least one year from date of shipping when stored at -20°C.

**RefSeq:** [NM\\_152538.1](#)

**RefSeq Size:** 3577 bp

**RefSeq ORF:** 1293 bp

**Locus ID:** 152404

**UniProt ID:** [Q5DX21](#)

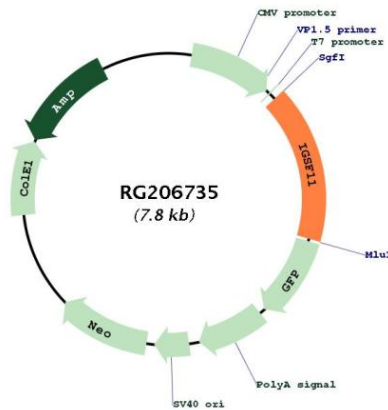
**Cytogenetics:** 3q13.32

**Domains:** ig, IGv, IGc2, IG

**Protein Families:** Transmembrane

**Gene Summary:** IGSF11 is an immunoglobulin (Ig) superfamily member that is preferentially expressed in brain and testis. It shares significant homology with coxsackievirus and adenovirus receptor (CXADR; MIM 602621) and endothelial cell-selective adhesion molecule (ESAM).[supplied by OMIM, Apr 2005]

**Product images:**



Circular map for RG206735