

## Product datasheet for **RG206734**

### TSGA13 (NM\_052933) Human Tagged ORF Clone

#### Product data:

Product Type:	Expression Plasmids
Product Name:	TSGA13 (NM_052933) Human Tagged ORF Clone
Tag:	TurboGFP
Symbol:	TSGA13
Mammalian Cell Selection:	Neomycin
Vector:	pCMV6-AC-GFP (PS100010)
E. coli Selection:	Ampicillin (100 ug/mL)
ORF Nucleotide Sequence:	>RG206734 representing NM_052933 Red=Cloning site Blue=ORF Green=Tags(s)

TTTTGTAATACGACTCACTATAGGGCGGCCGGAATTCGTCGACTGGATCCGGTACCGAGGAGATCTGCC  
GCC**CGATCGCC**

ATGAGCCAAAAGAGACAAACCAAGTTTCAAATGGCAAATCAAAGACTTCAGAAAATAGCTCAGCTAAAC  
GTGAGAAAGGAATGGTTGTCAATAGCAAAGAGATTTCTGATGCAGTCGGGCAATCAAATTTGTTCTAGA  
GAACCTTCGGCATTACACAGTCCATCCAAATTTGGCCAGTACTATAAGCCTTTGAAGGCCACTGCCCTG  
CAGAAATTCCTGGCTCAAACAGGAAAAACACCAGCTTCATGTTAAAAGTAACACAGTATGACCAGGATA  
AGACGTTACTGATTATGACCAACAACCCACCTCCCTGCTCAATCACCCAGCAAGACAAGGAGAGTGCAT  
AAAATATTTTTCCAAGGAGTTACTGCTCAAGGTCATGGAAAGTCATCATCAGCACAAACCCACTGAGAAC  
CTCTGGCTGCCCGCATGCCTCAGAAAAAAAAGTTAAGATCTAAGCTGAAACCAATCTTCCCTTTGATAC  
TGTCGGATGATCCACATCCAAGCGAGAACAATGGTTTAGGTTTTCCACTGACAATGATTTCAAGAGCGA  
AGGGAAGTATTCAAAGTCTACGCTTTGAGGACACAGAAGAAAATGTACCCTCAGCTCACCTTTGCTCCA  
GTCCATGAGAGAGATATGAGGAAAGATGCTTCCAAGAAGTCAGCGAGTAAAAGGCCAATTTCAAAGTGA  
TTCGGGAACCACTGACTCGCATCGCTCTTGAAGACATGCCACCAGAACCAGCCCGGGGAGAGCGC  
CTTCCGCAACGGGAGGGCCCCGAGTGGATTATCAAAAAGCCACGGTCATCGGG

**ACGCGT**ACGCGGCCGCTCGAG - GFP Tag - GTTTAA



[View online »](#)

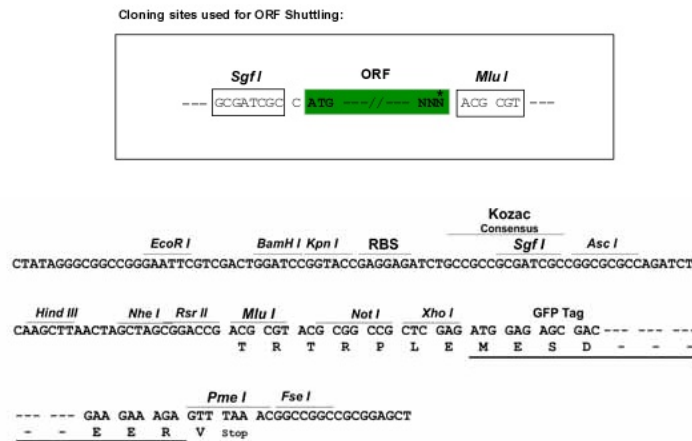
**Protein Sequence:** >RG206734 representing NM\_052933  
 Red=Cloning site Green=Tags(s)

MSQKRQTKFQNGKSKTSENSAKREKGMVNSKEISDAVGQSKFVLENLRHYTVHPNLAQYYKPLKATAL  
 QKFLAQNRKNTSFMLKVTQYDQDKTLLIMTNPPPCSITQQDKESASKYFSKELLLKVMESHQHHPKTEN  
 LWLPRMPQKKLRSKLPKIFPLILSDDPTSKREQWFRFSTDNDFKSEKYSKVYALRTQKKMYPQLTFAP  
 VHERDMRKDASKKSASERPIKSVIREPLTLASLLEDMPTRTAPGESAFRNGRAPQWIIKKATVIG

TRTRPLE - GFP Tag - V

**Restriction Sites:** SgfI-MluI

**Cloning Scheme:**



**ACCN:** NM\_052933

**ORF Size:** 825 bp

**OTI Disclaimer:** The molecular sequence of this clone aligns with the gene accession number as a point of reference only. However, individual transcript sequences of the same gene can differ through naturally occurring variations (e.g. polymorphisms), each with its own valid existence. This clone is substantially in agreement with the reference, but a complete review of all prevailing variants is recommended prior to use. [More info](#)

**OTI Annotation:** This clone was engineered to express the complete ORF with an expression tag. Expression varies depending on the nature of the gene.

**Components:** The ORF clone is ion-exchange column purified and shipped in a 2D barcoded Matrix tube containing 10ug of transfection-ready, dried plasmid DNA (reconstitute with 100 ul of water).

**Reconstitution Method:**

1. Centrifuge at 5,000xg for 5min.
2. Carefully open the tube and add 100ul of sterile water to dissolve the DNA.
3. Close the tube and incubate for 10 minutes at room temperature.
4. Briefly vortex the tube and then do a quick spin (less than 5000xg) to concentrate the liquid at the bottom.
5. Store the suspended plasmid at -20°C. The DNA is stable for at least one year from date of shipping when stored at -20°C.

**Note:** Plasmids are not sterile. For experiments where strict sterility is required, filtration with 0.22um filter is required.

**RefSeq:** [NM\\_052933.4](#)

**RefSeq Size:** 1700 bp

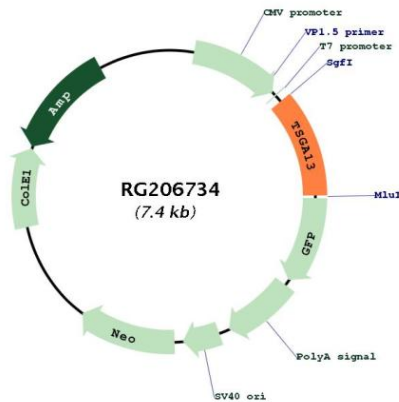
**RefSeq ORF:** 828 bp

**Locus ID:** 114960

**UniProt ID:** [Q96PP4](#)

**Cytogenetics:** 7q32.2

**Product images:**



Circular map for RG206734