

Product datasheet for **RG206725**

DMRTC2 (NM_001040283) Human Tagged ORF Clone

Product data:

Product Type:	Expression Plasmids
Product Name:	DMRTC2 (NM_001040283) Human Tagged ORF Clone
Tag:	TurboGFP
Symbol:	DMRTC2
Mammalian Cell Selection:	Neomycin
Vector:	pCMV6-AC-GFP (PS100010)
E. coli Selection:	Ampicillin (100 ug/mL)
ORF Nucleotide Sequence:	>RG206725 representing NM_001040283 Red=Cloning site Blue=ORF Green=Tags(s)

TTTTGTAATACGACTCACTATAGGGCGGCCGGAATTCGTCGACTGGATCCGGTACCGAGGAGATCTGCCGCC**CGATCGCC**

ATGGAACCCAGTGACATGCCTGCTGGCTACCACTGCCCTTAGACTCTGCCCCCTGGGATGAGACCAGAGACCCCCAGAGCACAGAGCTGATCCCCAGGAGAGCCATCAGCCGCTCTCCAACCTGCGCCCCCTGCCGCAACCATGGTGTACCCGCCATCTCAAGGGCCACAAGCGCCTCTGCCTCTCCAGGCTTGCAGTGTACAAAAAGCTAAGAAGCACCTGATGAGGAGAGGGGAAGCCTCTCCAAAGCTCCCAACCACTTCAGAAAGGGAACCACTCAGCCACAGGTCCCCTCTGGAAAGGAGAACATAGCACCCAGCCTCAGACCCCATGGGGCAGTCTGCTGGCACCGACACCCCGGGAAGAACTCCTGTGGGCTCTGCTGCTCAGCCATCCCCGGAAGCCTCGCCCTTGTCTGGACTCCGGTGCCTCCTGGCCCTTGGGTCCCTGGACTGGCTGCCTCCAGGCTTCTCATGCCACCACAGTGGTGTGCCGCTGCTGTACCAAGAACCTGCTGTCTCTGCCTCCCTTCCCTGGCTTTGACCTGGCACCTCCCTCCAGCTGCCACTCATGGGCCCTTACCACCTGCCAGGATCTACCCGACTACTGACAGCTCCTTTCTGGAGAGCCCCAAGGGCCCCCTAGCCAGCCCCGCACACTCAACTCTGATACTCCAGCCCTGTGGCACCCAGACCCTTTCAGCTACAGCCACAGGCCCTGGAGCCTCGTGCCTGGCCCGGACATCTGGCCCTCAGAGTGGCAGCTGCAGCAAGAGGCAGCTGAAGCCCTCGTGGGGCTGAAAGATTCATCCCAGGCTCCTCGTGTGACCCCTTCTGTGCCCCCAACCCTGCCTGGATCTCCCTGTTACCCCTGTGGCCACCAGCTCCTGTGGAGGAAGAGGATTCAGCCTGTTGGCCCTGTCTTCGACCCAGCCAGCCCTCTGTTGCTCTGCATATTGGCCGCTGGGGTCCATCTCCCTCCTGAGC

ACGCGTACGCGGCCGCTCGAG - GFP Tag - GTTTAA



[View online »](#)

Protein Sequence: >RG206725 representing NM_001040283
 Red=Cloning site Green=Tags(s)

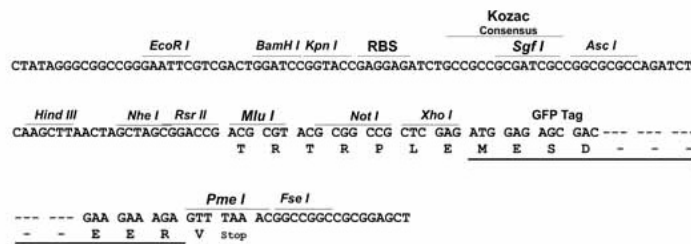
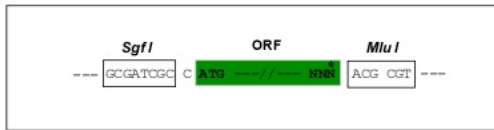
MEPSDMPAGYHCPLDSAPWDETRDPQSTELIPRRAISRSPTCARCRNHGVT AHLKGHKRLCLFQACECHK
 CVLILERRRVMAAQVALRRQEAQLKKHLMRRGEASPKAPNHFRKGTTPQVPSGKENIAPQPQTPHGAV
 LLAPTTPGKNSCGPLLLSHPPEASPLSWTPVPPGPWVPGHWLPPGF SMPPPVVCRLLYQEPVSLPPFPG
 FDPGTSLSLQLPTHGPFITTCPGSHPLVLTAPLSGEPQGPSPRTHSTLILQPCGTPDPLQLQPQASGASCLA
 RTSGPSEWQLQEAEEALVGLKDSSQAPRVTPSVPPNPAWISLLHPCGPPAPAGGRGFQVPGPCLRPSPA
 PSVALHIGRLGSISLLS

TRTRPLE - GFP Tag - V

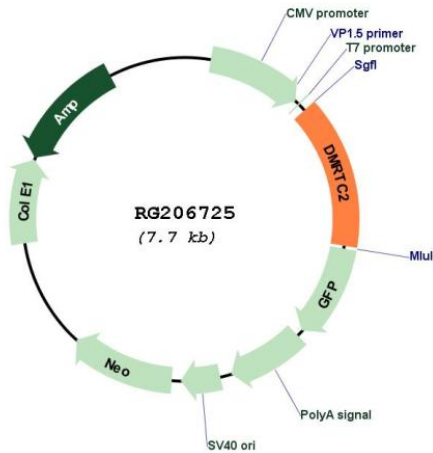
Restriction Sites: SgfI-MluI

Cloning Scheme:

Cloning sites used for ORF Shuttling:



Plasmid Map:



ACCN: NM_001040283

ORF Size:	1101 bp
OTI Disclaimer:	The molecular sequence of this clone aligns with the gene accession number as a point of reference only. However, individual transcript sequences of the same gene can differ through naturally occurring variations (e.g. polymorphisms), each with its own valid existence. This clone is substantially in agreement with the reference, but a complete review of all prevailing variants is recommended prior to use. More info
OTI Annotation:	This clone was engineered to express the complete ORF with an expression tag. Expression varies depending on the nature of the gene.
Components:	The ORF clone is ion-exchange column purified and shipped in a 2D barcoded Matrix tube containing 10ug of transfection-ready, dried plasmid DNA (reconstitute with 100 ul of water).
Reconstitution Method:	<ol style="list-style-type: none">1. Centrifuge at 5,000xg for 5min.2. Carefully open the tube and add 100ul of sterile water to dissolve the DNA.3. Close the tube and incubate for 10 minutes at room temperature.4. Briefly vortex the tube and then do a quick spin (less than 5000xg) to concentrate the liquid at the bottom.5. Store the suspended plasmid at -20°C. The DNA is stable for at least one year from date of shipping when stored at -20°C.
RefSeq:	NM_001040283.3
RefSeq Size:	1821 bp
RefSeq ORF:	1104 bp
Locus ID:	63946
UniProt ID:	Q8IXT2
Cytogenetics:	19q13.2
Protein Families:	Transcription Factors
Gene Summary:	May be involved in sexual development.[UniProtKB/Swiss-Prot Function]