

## Product datasheet for **RG206713**

### **NPTX2 (NM\_002523) Human Tagged ORF Clone**

#### Product data:

Product Type:	Expression Plasmids
Product Name:	NPTX2 (NM_002523) Human Tagged ORF Clone
Tag:	TurboGFP
Symbol:	NPTX2
Synonyms:	NARP; NP-II; NP2
Mammalian Cell Selection:	Neomycin
Vector:	pCMV6-AC-GFP (PS100010)
E. coli Selection:	Ampicillin (100 ug/mL)
ORF Nucleotide Sequence:	>RG206713 representing NM_002523 Red=Cloning site Blue=ORF Green=Tags(s)

TTTTGTAATACGACTCACTATAGGGCGCCGGGAATTCGTCGACTGGATCCGGTACCGAGGAGATCTGCC  
GCC**CGATCGCC**

ATGCTGGCGTGTGGCCGCCAGCGTGGCGCTCGCCGTGGCCGCTGGGGCCAGGACAGCCGGCGCCCG  
GTAGCCGCTTCGTGTGCACGGCACTGCCCCAGAGGCGGTGCACGCCGGTGCCTGCCCCGATGCC  
CATGCAGGGCGCGCAGAGTCCCAGGAGGAGCTGAGGGCCGGTGTGCAGCTGCGCGAGACCGTC  
GTGCAGCAGAAGGAGACGCTGGCGCGCAGCGCAGGCCATCCGCGAGCTCACGGCAAGCTAGCGCGT  
GCGAGGGGCTGGCGGGCGCAAGGCGCGCGGGGGCCACGGCAAGGACACTATGGCGACCTGCC  
GCGGGACCCCGGCCACGTCGTGGAGCAGCTCAGCCGCTCGCTGCAGACCCCAAGGACCGCTGGAGAGC  
CTCGAGCACCAGCTCAGAGCAAACGTGTCCAATGCTGGGCTGCCCGCGACTTCCGCGAGGTGCTCCAGC  
AGCGGCTGGGGGAGCTGGAGAGGACGCTTCTGCGCAAGGTGGCAGAGCTGGAGGACGAGAAGTCCCTGCT  
GCACAATGAGACCTCGGCTCACCGGCAGAAGACCAGAGCACCCTGAACGCGTGTGCAGAGGGTCAAC  
GAGCTGGAGCGAGGCAATAGCGCCTTTAAGTACCAGATGCGTTCAAGGTGTCCTCCACTCCGCACAA  
ACTACCTATACGGCAAGATCAAGAAGACGCTGCCTGAGCTGTACGCTTCAACATCTGCCTGTGGCTGCG  
GTCCAGCGCTCACCAGGCATTGGCACCCCTTCTCCTATGCGGTGCCAGGGCAGGCCAACGAGATCGTG  
CTGATCGAGTGGGGCAACAACCCATCGAGCTGCTCATCAAGACAAGGTTGCGAGCTGCCCTGTTTG  
TCAGTGACGGCAAGTGGCACCACATCTGTGTACCTGGACGACAGGGATGGCATGTGGGAGGCATTCCA  
GGACGGAGAGAAGCTGGGCACTGGGAGAACCTGGCCCCCTGGCACCCCAAGCCCGGGGCGTGTG  
ATCCTTGACAAGAGCAGGACACCGTGGGGGTAGGTTTGTGCTGCACTCAGGCATTTGTGGGGAGCTCA  
GCCAGTTCAACATATGGGACCGCTCCTTCGCGCACAAAGAAATTGTCAACATCGCCAAGTCTCCACAAA  
CATGCCGGCAACATCATCCCGTGGGTGGACAATAACGTCGATGTGTTCCGAGGGGCTCCAAGTGGCC  
GTGGAGACGTGTGAGGAGCGTCTCCTTGACTTG

**ACGCGT**ACGCGGCCGCTCGAG - GFP Tag - GTTTAA



[View online >](#)

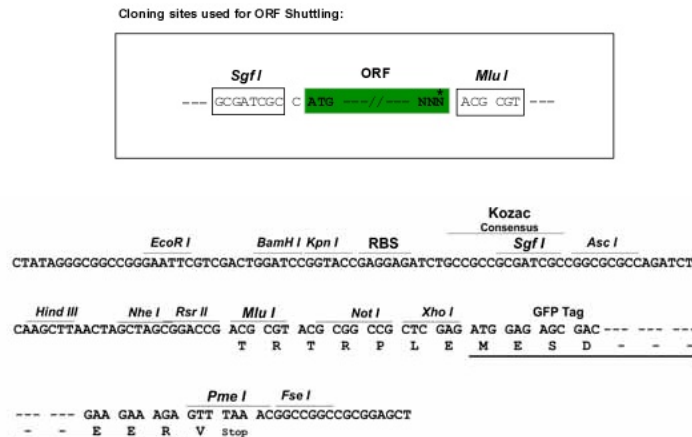
**Protein Sequence:** >RG206713 representing NM\_002523  
 Red=Cloning site Green=Tags(s)

MLALLAASVALAVAAGAQDSPAPGSRFVCTALPPEAVHAGCLPAMPMQGGAQSPEEELRAAVLQLRETV  
 VQKQETLGAQREAIREL TGKLARCEGLAGGKARGAGATGKDTMGDLPRDPGHVVEQLSRSLQTLKDRLES  
 LEHQLRANVSNAGLPDGFREVLLQQLGELERQLLRKVAELEDKSLLNHNETSAHRQKTESTLNALLQRVT  
 ELERGNSAFKSPDAFKVSLPLRTNYLYGKIKKTLPELYAFTICLWLRSSASPGIGTPFSYAVPGQANEIV  
 LIEWGNPIELLINDKVAQLPLFVSDGKWHHICVTWTTTRDGMWEAFQDGEKLGTEGENLAPWHPKPGGVL  
 ILGQEQDVTGGFRDATQAFVGGELSQFNIWDRVLAQEIVNIANCSTNMPGNIIPVVDNNVDVFGGASKWP  
 VETCEERLLDL

TRTRPLE - GFP Tag - V

**Restriction Sites:** SgfI-MluI

**Cloning Scheme:**



**ACCN:** NM\_002523

**ORF Size:** 1293 bp

**OTI Disclaimer:** The molecular sequence of this clone aligns with the gene accession number as a point of reference only. However, individual transcript sequences of the same gene can differ through naturally occurring variations (e.g. polymorphisms), each with its own valid existence. This clone is substantially in agreement with the reference, but a complete review of all prevailing variants is recommended prior to use. [More info](#)

**OTI Annotation:** This clone was engineered to express the complete ORF with an expression tag. Expression varies depending on the nature of the gene.

**Components:** The ORF clone is ion-exchange column purified and shipped in a 2D barcoded Matrix tube containing 10ug of transfection-ready, dried plasmid DNA (reconstitute with 100 ul of water).

**Reconstitution Method:**

1. Centrifuge at 5,000xg for 5min.
2. Carefully open the tube and add 100ul of sterile water to dissolve the DNA.
3. Close the tube and incubate for 10 minutes at room temperature.
4. Briefly vortex the tube and then do a quick spin (less than 5000xg) to concentrate the liquid at the bottom.
5. Store the suspended plasmid at -20°C. The DNA is stable for at least one year from date of shipping when stored at -20°C.

**RefSeq:** [NM\\_002523.3](#)

**RefSeq Size:** 2746 bp

**RefSeq ORF:** 1296 bp

**Locus ID:** 4885

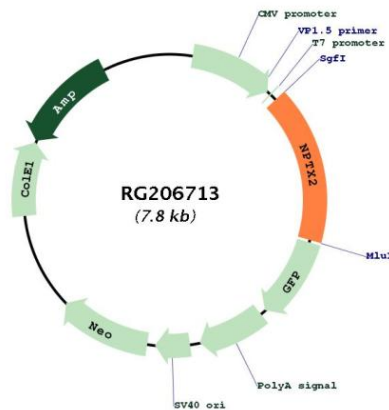
**UniProt ID:** [P47972](#)

**Cytogenetics:** 7q22.1

**Protein Families:** Secreted Protein

**Gene Summary:** This gene encodes a member of the family of neuronal petraxins, synaptic proteins that are related to C-reactive protein. This protein is involved in excitatory synapse formation. It also plays a role in clustering of alpha-amino-3-hydroxy-5-methyl-4-isoxazolepropionic acid (AMPA)-type glutamate receptors at established synapses, resulting in non-apoptotic cell death of dopaminergic nerve cells. Up-regulation of this gene in Parkinson disease (PD) tissues suggests that the protein may be involved in the pathology of PD. [provided by RefSeq, Feb 2009]

### Product images:



Circular map for RG206713