

## Product datasheet for **RG206702**

### **RNF36 (TRIM69) (NM\_080745) Human Tagged ORF Clone**

#### Product data:

Product Type:	Expression Plasmids
Product Name:	RNF36 (TRIM69) (NM_080745) Human Tagged ORF Clone
Tag:	TurboGFP
Symbol:	TRIM69
Synonyms:	HSD-34; HSD34; RNF36; Trif
Mammalian Cell Selection:	Neomycin
Vector:	pCMV6-AC-GFP (PS100010)
E. coli Selection:	Ampicillin (100 ug/mL)
ORF Nucleotide Sequence:	>RG206702 representing NM_080745 Red=Cloning site Blue=ORF Green=Tags(s)

TTTTGTAATACGACTCACTATAGGGCGGCCGGAATTCGTCGACTGGATCCGGTACCGAGGAGATCTGCC  
GCC**CGATCGCC**

ATGGAGGAGGAGCTTGCCATCCAACAGGGTCAACTGGAGACAACCTGAAGGAGCTTCAGACCCTGAGGA  
ACATGCAGAAGGAAGCTATTGCTGCTCACAAGGAAAACAAGCTACATCTGCAGCAACATGTGTCCATGGA  
GTTTCTAAAGCTGCATCAGTTCCTGCACAGCAAAGAAAAGGACATTTAACTGAGCTCCGGGAAGAGGGG  
AAAGCCTTGAATGAGGAGATGGAGTTGAATCTGAGCCAGCTTCAGGAGCAATGTCTTTAGCCAAGGATA  
TGTTGGTGAGCATTAGGCAAAGACGGAACAACAGAACTCCTTCGACTTTCTCAAAGACATCACAACCTCT  
CTTACATAGCTTGAGCAAGGAATGAAGGTGCTGGCAACCGAGAGCTTATTTCCAGAAAGCTGAACCTG  
GGCCAGTACAAAGGTCTATCCAGTACATGGTATGGAGGAAATGCAGGACACTCTTGCCAGGCCTGT  
CTCCACTAACTCTGGACCCTAAAACAGCTCACCAAACTGGTGTCTCCAAAAGCCAAACAGCGTCTG  
GCATGGTGACATTAAGAAGATAATGCCTGATGATCCTGAGAGTTTGACTCAAGTGTGGCTGACTGGGC  
TCAAGAGGCTTCACCTCTGGAAGTGGTACTGGGAAGTAGAAGTAGCAAAGAAGACAAAATGGACAGTTG  
GAGTTGTCAGAGAATCCATCATTGGAAGGCGAGCTGTCTCTAACTCCTGAGCAAGGATTCTGGCTTTT  
AAGACTAAGGAACCAAATGATCTAAAGGCTCTGGATTTGCCTTCTTTTCAGTCTGACACTGACTAACAAC  
CTCGCAAAGGTGGCATATACCTGGATTATGAAGGAGGACAGTTGTCCTTCTACAATGCTAAAACCATGA  
CTCACATTTACACCTTCAGTAACACTTTTATGGAGAACTTTATCCCTACTTCTGCCCTGCCTTAATGA  
TGTTGGAGAGAATAAAGAACCATTGCACATCTTACATCCACAG

**ACGCGT**ACGCGGCCGCTCGAG - GFP Tag - GTTTAA



[View online »](#)

**Protein Sequence:** >RG206702 representing NM\_080745  
 Red=Cloning site Green=Tags(s)

MEEELAIQQGQLETTLLKELQTLRNMQKEAIAAHKENKHLHQHVSMEFLKHLHQLHSKEKDILTELREEG  
 KALNEEMELNLSQLQEQLLAKDMLVSIQAKTEQQNSFDLKDITLLHSLEQGMKVLATRELISRKLN  
 GQYKGP IQYMWREMQD TLCPGLSPLT LDPKTAHPNLVLSKSQTSVWHGDIKKIMPDDPERFDSSVAVLG  
 SRGFTSGKWYWEVEVAKKTKWTVGVVRESIIRKGSCLPTPEQGFLLRLRNQTDLKDLDLPSFLTLTNN  
 LDKVGIYLDYEGGQLSFYNAKTMTHIYTFSTNTFMEKLYPYFCPLNDGGENKEPLHLHPQ

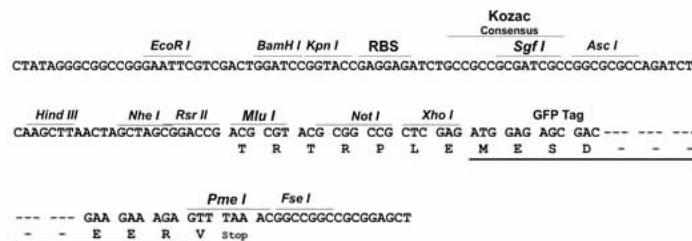
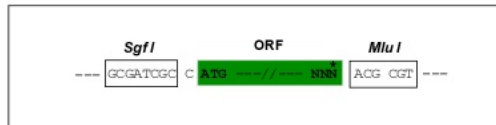
TRTRPLE - GFP Tag - V

**Restriction Sites:**

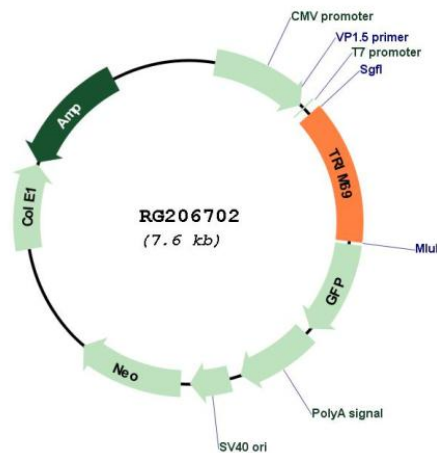
Sgfl-MluI

**Cloning Scheme:**

Cloning sites used for ORF Shuttling:



**Plasmid Map:**



**ACCN:** NM\_080745

**ORF Size:** 1023 bp

<b>OTI Disclaimer:</b>	The molecular sequence of this clone aligns with the gene accession number as a point of reference only. However, individual transcript sequences of the same gene can differ through naturally occurring variations (e.g. polymorphisms), each with its own valid existence. This clone is substantially in agreement with the reference, but a complete review of all prevailing variants is recommended prior to use. <a href="#">More info</a>
<b>OTI Annotation:</b>	This clone was engineered to express the complete ORF with an expression tag. Expression varies depending on the nature of the gene.
<b>Components:</b>	The ORF clone is ion-exchange column purified and shipped in a 2D barcoded Matrix tube containing 10ug of transfection-ready, dried plasmid DNA (reconstitute with 100 ul of water).
<b>Reconstitution Method:</b>	<ol style="list-style-type: none"><li>1. Centrifuge at 5,000xg for 5min.</li><li>2. Carefully open the tube and add 100ul of sterile water to dissolve the DNA.</li><li>3. Close the tube and incubate for 10 minutes at room temperature.</li><li>4. Briefly vortex the tube and then do a quick spin (less than 5000xg) to concentrate the liquid at the bottom.</li><li>5. Store the suspended plasmid at -20°C. The DNA is stable for at least one year from date of shipping when stored at -20°C.</li></ol>
<b>RefSeq:</b>	<a href="#">NM_080745.5</a>
<b>RefSeq Size:</b>	1434 bp
<b>RefSeq ORF:</b>	1026 bp
<b>Locus ID:</b>	140691
<b>UniProt ID:</b>	<a href="#">Q86WT6</a>
<b>Cytogenetics:</b>	15q21.1
<b>Domains:</b>	SPRY, PRY
<b>Protein Families:</b>	Druggable Genome
<b>Gene Summary:</b>	This gene encodes a member of the RING-B-box-coiled-coil (RBCC) family and encodes a protein with an N-terminal RING finger motif, a PRY domain and a C-terminal SPRY domain. The mouse ortholog of this gene is specifically expressed in germ cells at the round spermatid stages during spermatogenesis and, when overexpressed, induces apoptosis. Alternatively spliced transcript variants encoding distinct isoforms have been described. [provided by RefSeq, Jul 2008]