

## Product datasheet for **RG206682**

### STOML3 (NM\_145286) Human Tagged ORF Clone

#### Product data:

Product Type:	Expression Plasmids
Product Name:	STOML3 (NM_145286) Human Tagged ORF Clone
Tag:	TurboGFP
Symbol:	STOML3
Synonyms:	Epb7.2l; SRO
Mammalian Cell Selection:	Neomycin
Vector:	pCMV6-AC-GFP (PS100010)
E. coli Selection:	Ampicillin (100 ug/mL)
ORF Nucleotide Sequence:	>RG206682 representing NM_145286 Red=Cloning site Blue=ORF Green=Tags(s)

TTTTGTAATACGACTCACTATAGGGCGGCCGGAATTCGTCGACTGGATCCGGTACCGAGGAGATCTGCC  
GCC**CGCATCGCC**

ATGGATTCTAGGGTGTCTTCACCTGAGAAGCAAGATAAAGAGAATTCGTGGGTGTCAACAATAAACGGC  
TTGGTGTATGTGGCTGGATCCTGTTTTCCCTCTCTTTCTGTTGGTGATCATTACCTTCCCCATCTCCAT  
ATGGATGTGCTTGAAGATCATTAAAGGAGTGAACGTGCTGTTGTATTCCGTCTGGGACGCATCCAAGCT  
GACAAAGCCAAGGGGCCAGGTTTGATCCTGGTCTGCCATGCATAGATGTGTTTGTCAAAGTTGACCTCC  
GAACAGTTACTTGCAACATTCCTCCACAAGAGATCCTCACCAGAGACTCCGTAACACTACTCAGGTAGATGG  
AGTTGTCTATTACAGAATCTATAGTGTCTCAGCAGTGGCTAATGTCAACGATGTCCATCAAGCAACA  
TTTCTGTCTGGCTCAAACCACTCTGAGAAATGTCTTAGGGACACAGACCTTGTCCCAGATCTTAGCTGGAC  
GAGAAGAGATCGCCCATAGCATCCAGACTTTACTTGATGATGCCACCGAACTGTGGGGGATCCGGGTGGC  
CCGAGTGGAAATCAAAGATGTTCCGATTCCCGTGCAGTTGCAGAGATCCATGGCAGCCGAGGCTGAGGCC  
ACCCGGGAAGCGAGAGCCAAGGTCCTTGCAGCTGAAGGAGAAATGAATGCTTCCAATCCCTGAAGTCAG  
CCTCCATGGTGTGGCTGAGTCTCCATAGCTCTCCAGCTGCGCTACCTGCAGACCTTGAGCACGGTAGC  
CACCGAGAAGAATTCTACGATTGTTTTCTCTGCCCATGAATATACTAGAGGGCATTGGTGGCGTCAGC  
TATGATAACCAACAAGAAGCTTCAAATAAAGCC

**ACGCGT**ACGCGGCCGCTCGAG - GFP Tag - GTTTAA



[View online »](#)

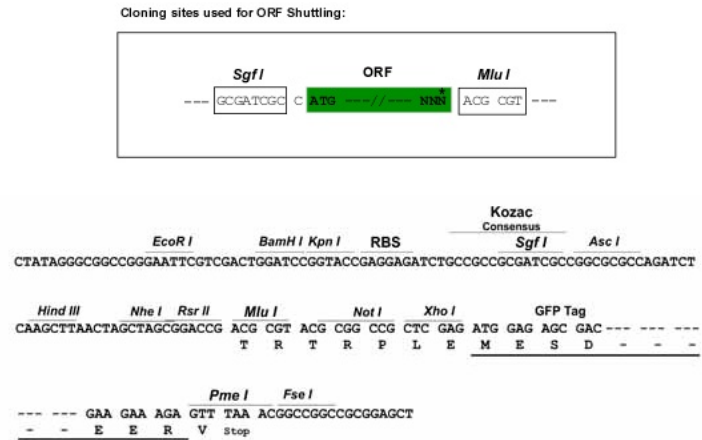
**Protein Sequence:** >RG206682 representing NM\_145286  
Red=Cloning site Green=Tags(s)

MDSRVSSPEKQDKENFVGVNNKRLGVCWILFSLSFLLVIITFPISIWMLKIIKEYERAVVFRLGRIQA  
 DKAKGPGILVLPCIDVFKVDLRTVTCNIPPQEILTRDSVTTQVDGVVYYRIYSAVSANVNDVHQAT  
 FLLAQTTLRNVLGTQTLSQLAGREEIAHSIQTLDDATELWGIRVARVEIKDVRIPVQLQRSMAAEAEA  
 TREARAKVLAAGEMNASKSLKSASMLVAESPIALQLRYLQTLSTVATEKNSTIVFPLPMNILEGIGGVS  
 YDNHKKLPNKA

TRTRPLE - GFP Tag - V

**Restriction Sites:** SgfI-MluI

**Cloning Scheme:**



**ACCN:** NM\_145286

**ORF Size:** 873 bp

**OTI Disclaimer:** The molecular sequence of this clone aligns with the gene accession number as a point of reference only. However, individual transcript sequences of the same gene can differ through naturally occurring variations (e.g. polymorphisms), each with its own valid existence. This clone is substantially in agreement with the reference, but a complete review of all prevailing variants is recommended prior to use. [More info](#)

**OTI Annotation:** This clone was engineered to express the complete ORF with an expression tag. Expression varies depending on the nature of the gene.

**Components:** The ORF clone is ion-exchange column purified and shipped in a 2D barcoded Matrix tube containing 10ug of transfection-ready, dried plasmid DNA (reconstitute with 100 ul of water).

**Reconstitution Method:**

1. Centrifuge at 5,000xg for 5min.
2. Carefully open the tube and add 100ul of sterile water to dissolve the DNA.
3. Close the tube and incubate for 10 minutes at room temperature.
4. Briefly vortex the tube and then do a quick spin (less than 5000xg) to concentrate the liquid at the bottom.
5. Store the suspended plasmid at -20°C. The DNA is stable for at least one year from date of shipping when stored at -20°C.

**RefSeq:** [NM\\_145286.3](#)

**RefSeq Size:** 1954 bp

**RefSeq ORF:** 876 bp

**Locus ID:** 161003

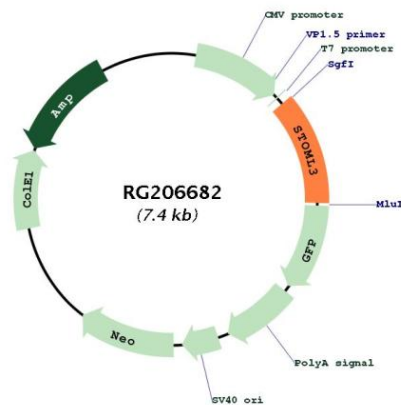
**UniProt ID:** [Q8TAV4](#)

**Cytogenetics:** 13q13.3

**Protein Families:** Transmembrane

**Gene Summary:** Required for the function of many mechanoreceptors. Modulate mechanotransduction channels and acid-sensing ion channels (ASIC) proteins. Potentiates PIEZO1 and PIEZO2 function by increasing their sensitivity to mechanical stimulations.[UniProtKB/Swiss-Prot Function]

### Product images:



Circular map for RG206682