

## Product datasheet for **RG206661**

### WDR49 (NM\_178824) Human Tagged ORF Clone

#### Product data:

Product Type:	Expression Plasmids
Product Name:	WDR49 (NM_178824) Human Tagged ORF Clone
Tag:	TurboGFP
Symbol:	WDR49
Synonyms:	FLJ33620
Mammalian Cell Selection:	Neomycin
Vector:	pCMV6-AC-GFP (PS100010)
E. coli Selection:	Ampicillin (100 ug/mL)



[View online »](#)

ORF Nucleotide  
Sequence:

>RG206661 representing NM\_178824  
Red=Cloning site Blue=ORF Green=Tags(s)

TTTTGTAATACGACTCACTATAGGGCGGCCGGAATTCGTCGACTGGATCCGGTACCGAGGAGATCTGCC  
GCC**CGCATCGCC**

ATGGCTTGGAGAGAGAAATCAAAAAAGCGTCTTAATATGACATCCTTCAACATTGCCAGGGCATTATG  
CTTTTGATTACTCTCGGCTCAATTTAATTGCAACTGCTGGCATTAAACAATAAAGTTTGCCTTTGGAA  
TCCTATGTTGTCTCTAAACCAGTGGGTGTCTTTGGGGCCACTCAGCCAGTGAATAGCCGTCCAATTC  
TTTGTGGAAGAAAAACAACCTTTTCAGCTTCTCCAAGGATAAAGTTTTGAGACTCTGGGATATTCAACACC  
AGCTGTCCATCCAGAGGATAGCTTGTCTTTCCCAAAAGTCAGGACTTCAGATGTCTCTCCACTTTGA  
TGAAGCCCATGGACGACTTTTCATCTCGTTAATAACCAGCTAGCATTGTTGGCAATGAAAAGTGAAGCC  
AGCAAGAGGGTGAAGCCATGAGAAAGCAGTCACTTGTGTTCTTACAATTCTATCTTGAAGCAGGTAA  
TCAGCTCTGATACAGGGTCTACTGTTTCTTCTGGATGATAGACTGGGCAGAAAATCAACAGTTTAC  
TGTTGCCACGGCAACGCAGAAAATCAGCACTATGGCCCTTGATGCAAATGAGACTCGGCTTTTGACTGGC  
AGCACAGATGGGACTGTAAGATATGGGACTTCAATGGATATTGTCACCATACACTAAATGTTGGGCAAG  
ATGGAGCTGTGGATATTTCAAAAATCCTCATTCTTAAGAAGAAAATACTGGTTACAGGCTGGGAGAGGGC  
TATTACTGTGTTTCGACCCAAAACCTTCAATCAATTTTTTCATCCAGCCTGAAAGATGAAAGGAGGTATA  
CAGCACCATGATGACATCTTGTGTGCTCGCTTTTTACCTCCAAAACCTTGTACGGGGAGTTATGATG  
GAGAAATTGTTCTATGGAACAATAGCACAGAGAATGCTCACCATGTTCTTACCCTGATTACCAGAGGTT  
GCTAAAGTCAAAATAGATACAAAACCTCAAAAACCTTCTCAGTGTGGGAGAAGCCAACCTCCCACCCC  
ATGGCAGACCATTCTACCACGGGAGTCCGCAACTTTGAGATTGACTGAGGGCAAAAATGCTGTTATGA  
GACTTTGCTTTCTTAAAGCAAGAAAAAACACTGCAGTGACAGGAGGAGCTAACCTGGTATCATGTGGAGG  
ATCTGGTTATGTCAGATTTTGGGATATATAAGAAGCAACTTCTGGCTGAATTTTTGGCTCATAGTGGA  
GTTGGATCGATTATTATGTCTACTGATAAGATGAATCGATACCTTACCACAGGAGATCTTGTGGATGGT  
TGAAAATCTGGAATATAGAGGAGTACTGTCTTAACTCCAGTAAGAACAATAACCAAGGCCCAACTCT  
GATAAGATCATTCCAACCTCATGAGGACCGAATAAGTTCCTTAGAGATGTGTGAGCCAGGTGGTCAGTTA  
CTGATTATCTCCTCTGCAGACTGCAGTATTTGTGACTGGTGTCTGCAATGCTCCTGTTTGGATCT  
TTGGTCAGGCAAAGCACTGGCATATTGAAAACCTGCTTTTCTTCTAAAAGAGATACTAATTTAGTGGA  
AAGTGAGATTCAAAGGAAATTTCTTTATTTTCTAAGGAGGAATCTTGTAGACCCAACAGAACATTCT  
CTACTTAATAAGAAAAACAAGATGACTCAACATACAATGTCAGACCATCAGAAGATATAAATTTAGATA  
TAAAATATAAGGAAAGAAGTACCTGCATGAAAGAAACACAAAACCTTATTATGGTGAAGTTATAAAAA  
ATCATTAGTACATTTAGGTCATTAACATTGGAGCCCTGGAAGAGCTGCCTGAAGTGAATAAACCTGCT  
TTCTTCTAGACCCTGAGAAACTTTAGGAAAGAACCAGAGGAAGAGCGTCCCCAAATCTGGAGGCC  
CGTCACTTTTTAAACCTTTGAAAGCTGTATTTGATGAGAAAACTGTTTCCAAGGAAATCTGCATCA  
TGAACGAAAAGCCAAGCAATTATGCCAAGAAAAAAGTTGTGAAGTGAAGAAAAATAAGAAG

**ACGCGT**ACGCGGCCGCTCGAG - GFP Tag - GTTTAA

Protein Sequence: >RG206661 representing NM\_178824  
 Red=Cloning site Green=Tags(s)

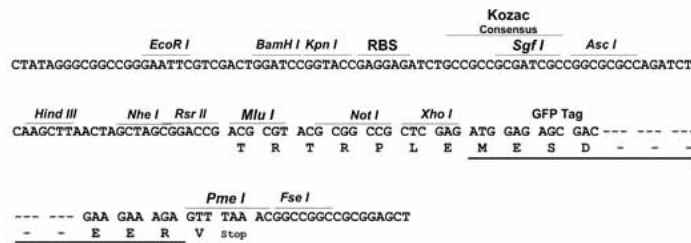
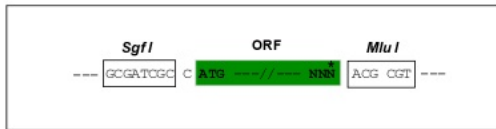
MAWREKSKKRLNMTSFNIAQGIHAFDYHSRLNLIATAGINNKVCLWNPYVVS KPVGVLWGHASVIAVQF  
 FVERKQLFSFSKDKVLRRLWDIQHQLSIQRIACSFPKSQDFRCLFHFDEAHGRLFISFNQLALLAMKSEA  
 SKRVKSHEKAVTCVLYNSILKQVSSDGTSTVFWMIDTGQKIKQFTGCHGNAEISTMALDANETRLLTG  
 STDGTVKIWDFNQYCHHTLVNQGQDGAVDISQILILKKKILVTGWERAITVFRPQNFNQFFIQPEEWKGGI  
 QHDDILCAAFLPPQTLVTGSDGEIVLWNNSTENAHHVLHPDYQRLLKSKLDTKPQKLLSAGRSQPSPH  
 MADHSTTGVRNFEIDTEGKNAVMLRCLFKARKNTAVTGGANLVSCGGSGYVRFWDIYKKQLLAEFLAHSG  
 VGSII MSTDKMNRYLTTGDLDGWLKIWNIEEYCLNSSKNKITKAPTLIRSFQPHEDRISSELMCEPGQL  
 LISSSADCSICVTGVCNAPVWIFGQAKHWHIENCLFLPKRDTNLVESEIQKEISLFSKEESCLDPTESH  
 LLNKKNKDDSTYNVRPSEDINLDIKYKERSTCMKETQKPYGGEVKKSFSTFRSLNIGALEELPEVNKPA  
 FLLDPEKYFRKEPEEERQILEAPSLFKTLKAVFDEKNLFPKEILHHERKAKQLCQEKSCVEVKKKK

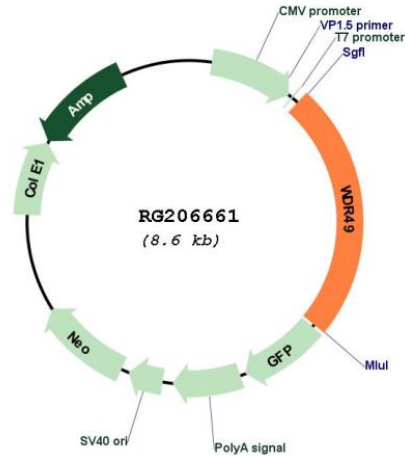
TRTRPLE - GFP Tag - V

Restriction Sites: SgfI-MluI

Cloning Scheme:

Cloning sites used for ORF Shuttling:



**Plasmid Map:**


**ACCN:** NM\_178824

**ORF Size:** 2091 bp

**OTI Disclaimer:** The molecular sequence of this clone aligns with the gene accession number as a point of reference only. However, individual transcript sequences of the same gene can differ through naturally occurring variations (e.g. polymorphisms), each with its own valid existence. This clone is substantially in agreement with the reference, but a complete review of all prevailing variants is recommended prior to use. [More info](#)

**OTI Annotation:** This clone was engineered to express the complete ORF with an expression tag. Expression varies depending on the nature of the gene.

**Components:** The ORF clone is ion-exchange column purified and shipped in a 2D barcoded Matrix tube containing 10ug of transfection-ready, dried plasmid DNA (reconstitute with 100 ul of water).

**Reconstitution Method:**

1. Centrifuge at 5,000xg for 5min.
2. Carefully open the tube and add 100ul of sterile water to dissolve the DNA.
3. Close the tube and incubate for 10 minutes at room temperature.
4. Briefly vortex the tube and then do a quick spin (less than 5000xg) to concentrate the liquid at the bottom.
5. Store the suspended plasmid at -20°C. The DNA is stable for at least one year from date of shipping when stored at -20°C.

**RefSeq:** [NM\\_178824.3](#), [NP\\_849146.1](#)

**RefSeq Size:** 2672 bp

RefSeq ORF: 2094 bp

Locus ID: 151790

UniProt ID: [Q8IV35](#)

Cytogenetics: 3q26.1

**Gene Summary:** This gene encodes a member of the WD repeat protein family with nine WD repeats. WD repeats are minimally conserved regions of approximately 40 amino acids typically bracketed by gly-his and trp-asp (GH-WD), which may facilitate formation of heterotrimeric or multiprotein complexes. Members of this family are involved in a variety of cellular processes, including cell cycle progression, signal transduction, apoptosis, and gene regulation. Alternative splicing results in multiple transcript variants. [provided by RefSeq, Feb 2017]