

## Product datasheet for **RG206629**

### Interleukin 34 (IL34) (NM\_152456) Human Tagged ORF Clone

#### Product data:

Product Type:	Expression Plasmids
Product Name:	Interleukin 34 (IL34) (NM_152456) Human Tagged ORF Clone
Tag:	TurboGFP
Symbol:	Interleukin 34
Synonyms:	C16orf77; IL-34
Mammalian Cell Selection:	Neomycin
Vector:	pCMV6-AC-GFP (PS100010)
E. coli Selection:	Ampicillin (100 ug/mL)
ORF Nucleotide Sequence:	>RG206629 representing NM_152456 Red=Cloning site Blue=ORF Green=Tags(s)

TTTTGTAATACGACTCACTATAGGGCGGCCGGAATTCGTCGACTGGATCCGGTACCGAGGAGATCTGCC  
GCC**CGATCGCC**

ATGCCCGGGCTTCACCTGGCTGCGCTATCTTGGGATCTTCTTGGCGTGGCCTGGGGAATGAGCCTT  
TGGAGATGTGGCCCTTGACGCAGAATGAGGAGTGCAGTGTACCGGTTTTCTGCGGGACAAGCTGCAGTA  
CAGGAGCCGACTTCAGTACATGAAACACTACTTCCCCATCAACTACAAGATCAGTGTGCCTTACGAGGGG  
GTGTTCAGAATCGCCAACGTACCAGGCTGCAGAGGGCCAGGTGAGCGAGCGGGAGCTGCGGTATCTGT  
GGTCTTGGTGAACCTCAGTGCCTGAGTCCGGTGCAGGACGTGCTGCTCGAGGGCCACCCATCCTGGAA  
GTACCTGCAGGAGGTGCAGACGCTGCTGCTGAATGTCCAGCAGGGCCTCACGGATGTGGAGGTGAGCCCC  
AAGGTGGAATCCGTGTTGTCCCTCTTGAATGCCCCAGGGCCAAACCTGAAGCTGGTGCAGGGCCAAAGCCC  
TGCTGGACAACCTGCTTCCGGGTGATGGAGCTGCTGACTGCTCCTGCTGTAAACAAGCTCCGTCCTAAA  
CTGGCAGGACTGTGAGGTGCCAAGTCTCAGTCTTGCAGCCCAGAGCCCTCATTGCAGTATGCGGCCACC  
CAGCTGTACCCTCCGCCCGTGGTCCCCAGCTCCCCGCTCACTCCACGGGCTCGGTGAGGCCGGTCA  
GGGCACAGGGCGAGGGCCTTTGCC

**ACGCGT**ACGCGGCCGCTCGAG - GFP Tag - GTTTAA



[View online »](#)

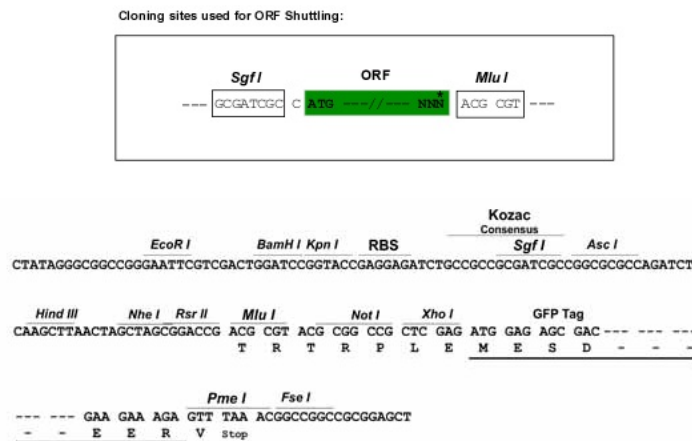
**Protein Sequence:** >RG206629 representing NM\_152456  
 Red=Cloning site Green=Tags(s)

MPRGFTWLRYLGI FLGVALGNEPLEM WPLTQNEECTVTGFLRDKLQYRSRLQYMKHYFPIN YKISVPYEG  
 VFRIANVTRLQRAQV SERELRYLWVLSL SATESVQDVLLEGHPSWKYLQEVQ TLLLLNVQQGLT DVEVSP  
 KVESVL SLLNAPGNLKLVRPKALLDNCFRVMELLYCSCCKQSSVLNWQDCEVSPSQSCSPEPSLQYAAT  
 QLYPPPPWSPSSPPHSTG SVRPVRAQGEGLLP

TRTRPLE - GFP Tag - V

**Restriction Sites:** SgfI-MluI

**Cloning Scheme:**



**ACCN:** NM\_152456

**ORF Size:** 726 bp

**OTI Disclaimer:** The molecular sequence of this clone aligns with the gene accession number as a point of reference only. However, individual transcript sequences of the same gene can differ through naturally occurring variations (e.g. polymorphisms), each with its own valid existence. This clone is substantially in agreement with the reference, but a complete review of all prevailing variants is recommended prior to use. [More info](#)

**OTI Annotation:** This clone was engineered to express the complete ORF with an expression tag. Expression varies depending on the nature of the gene.

**Components:** The ORF clone is ion-exchange column purified and shipped in a 2D barcoded Matrix tube containing 10ug of transfection-ready, dried plasmid DNA (reconstitute with 100 ul of water).

**Reconstitution Method:**

1. Centrifuge at 5,000xg for 5min.
2. Carefully open the tube and add 100ul of sterile water to dissolve the DNA.
3. Close the tube and incubate for 10 minutes at room temperature.
4. Briefly vortex the tube and then do a quick spin (less than 5000xg) to concentrate the liquid at the bottom.
5. Store the suspended plasmid at -20°C. The DNA is stable for at least one year from date of shipping when stored at -20°C.

**RefSeq:** [NM\\_152456.1](#), [NP\\_689669.1](#)

**RefSeq Size:** 1652 bp

**RefSeq ORF:** 729 bp

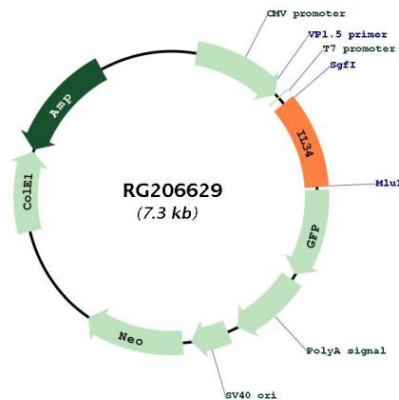
**Locus ID:** 146433

**UniProt ID:** [Q6ZMJ4](#)

**Cytogenetics:** 16q22.1

**Gene Summary:** Interleukin-34 is a cytokine that promotes the differentiation and viability of monocytes and macrophages through the colony-stimulating factor-1 receptor (CSF1R; MIM 164770) (Lin et al., 2008 [PubMed 18467591]).[supplied by OMIM, May 2008]

**Product images:**



Circular map for RG206629