

Product datasheet for **RG206602**

Endothelin 2 (EDN2) (NM_001956) Human Tagged ORF Clone

Product data:

Product Type: Expression Plasmids
Product Name: Endothelin 2 (EDN2) (NM_001956) Human Tagged ORF Clone
Tag: TurboGFP
Symbol: Endothelin 2
Synonyms: ET-2; ET2; PPET2
Mammalian Cell Selection: Neomycin
Vector: pCMV6-AC-GFP (PS100010)
E. coli Selection: Ampicillin (100 ug/mL)
ORF Nucleotide Sequence: >RG206602 representing NM_001956
 Red=Cloning site Blue=ORF Green=Tags(s)

TTTTGTAATACGACTCACTATAGGGCGCCGGGAATTCGTCGACTGGATCCGGTACCGAGGAGATCTGCC
 GCC**CGATCGCC**

ATGGTCTCCGTGCCTACCACCTGGTGCTCCGTTGCGCTAGCCCTGCTCGTGGCCCTGCATGAAGGGAAGG
 GCCAGGCTGTGCCACCCTGGAGCAGCCAGCGTCTCATCTCATGCCAAGGCACCCACCTTCGGCTTCG
 CCGTTGCTCCTGCAGCTCCTGGCTCGACAAGGAGTGCCTACTTCTGCCACTTGGACATCATCTGGGTG
 AACACTCTGAACAGACAGCTCCTTACGGCCTGGGAAACCGCCAAGACGCCGGCGCCGCTCCCTGCCAA
 GGCCTGTGTCAGTCTCCAGTCCAGGACCCCGCCTGTGCCACCTTCTGCCTTGAAGGCCCTGGACTGA
 AGCCGGGGCAGTCCCAAGCCGGAAGTCCCTGCAGACGTGTTCCAGACTGGCAAGACAGGGGCCACTACA
 GGAGAGCTTCTCAAAGGCTGAGGGACATTTCCACAGTCAAGAGCCTCTTTGCCAAGCGACAACAGGAGG
 CCATGCGGGAGCCTCGGTCCACACATTCCAGGTGGAGGAAGAGA

ACGCGTACGCGGCCGCTCGAG - GFP Tag - GTTTAA

Protein Sequence: >RG206602 representing NM_001956
 Red=Cloning site Green=Tags(s)

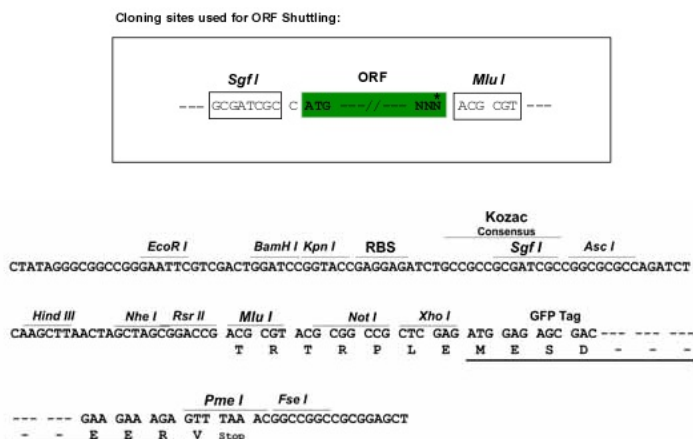
MVSVPTTWCSVALALLVALHEGKGQAAATLEQPASSSHAQGTHLRLRRCSSSWLDKECVYFCHLDIIWV
 NTPEQTAPYGLGNPPRRRRRSLPRRCQCSSARDPACATFCLRRPWTEAGAVPSRKRSPADVFQTKGTGATT
 GELLQLRLDSTVKSLFAKRQEQEAMREPRSTHSRWRKR

TRTRPLE - GFP Tag - V

Restriction Sites: Sgfl-MluI



[View online »](#)

Cloning Scheme:


ACCN: NM_001956

ORF Size: 534 bp

OTI Disclaimer: The molecular sequence of this clone aligns with the gene accession number as a point of reference only. However, individual transcript sequences of the same gene can differ through naturally occurring variations (e.g. polymorphisms), each with its own valid existence. This clone is substantially in agreement with the reference, but a complete review of all prevailing variants is recommended prior to use. [More info](#)

OTI Annotation: This clone was engineered to express the complete ORF with an expression tag. Expression varies depending on the nature of the gene.

Components: The ORF clone is ion-exchange column purified and shipped in a 2D barcoded Matrix tube containing 10ug of transfection-ready, dried plasmid DNA (reconstitute with 100 ul of water).

Reconstitution Method:

1. Centrifuge at 5,000xg for 5min.
2. Carefully open the tube and add 100ul of sterile water to dissolve the DNA.
3. Close the tube and incubate for 10 minutes at room temperature.
4. Briefly vortex the tube and then do a quick spin (less than 5000xg) to concentrate the liquid at the bottom.
5. Store the suspended plasmid at -20°C. The DNA is stable for at least one year from date of shipping when stored at -20°C.

RefSeq: [NM_001956.5](#)

RefSeq Size: 1296 bp

RefSeq ORF: 537 bp

Locus ID: 1907

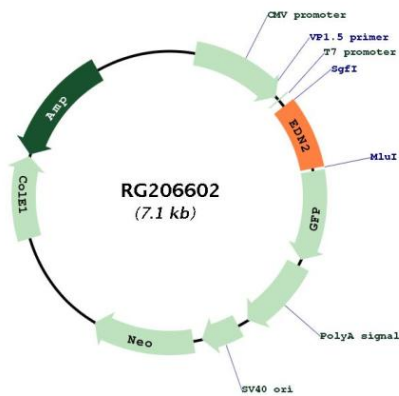
UniProt ID: [P20800](#)

Cytogenetics: 1p34.2

Protein Families: Druggable Genome, Secreted Protein

Gene Summary: This gene encodes a member of the endothelin protein family of secretory vasoconstrictive peptides. The preproprotein is processed to a short mature form which functions as a ligand for the endothelin receptors that initiate intracellular signaling events. This gene product is involved in a wide range of biological processes, such as hypertension and ovulation. Altered expression of this gene is implicated in tumorigenesis. Alternative splicing results in multiple transcript variants. [provided by RefSeq, Oct 2014]

Product images:



Circular map for RG206602