

Product datasheet for **RG206597**

CD42a (GP9) (NM_000174) Human Tagged ORF Clone

Product data:

Product Type: Expression Plasmids
Product Name: CD42a (GP9) (NM_000174) Human Tagged ORF Clone
Tag: TurboGFP
Symbol: CD42a
Synonyms: CD42a; GPIX
Mammalian Cell Selection: Neomycin
Vector: pCMV6-AC-GFP (PS100010)
E. coli Selection: Ampicillin (100 ug/mL)
ORF Nucleotide Sequence: >RG206597 representing NM_000174
 Red=Cloning site Blue=ORF Green=Tags(s)

TTTTGTAATACGACTCACTATAGGGCGCCGGGAATTCGTCGACTGGATCCGGTACCGAGGAGATCTGCC
 GCC**CGATCGCC**

ATGCTGCCTGGGGAGCCCTGTTCTGCTCTGGGCCACAGCAGAGGCCACCAAGGACTGCCCCAGCCCAT
 GTACCTGCCGCGCCCTGGAAACCATGGGGCTGTGGGTGGACTGCAGGGGCCACGGACTCACGGCCCTGCC
 TGCCCTGCCGGCCCGCACCCGCCACCTTCTGCTGGCCAACAACAGCCTTCAGTCCGTGCCCGGGAGCC
 TTTGACCACCTGCCCCAGCTGCAGACCCTCGATGTGACGCAGAACCCTGGCACTGTGACTGCAGCCTCA
 CCTATCTGCGCCTCTGGCTGGAGACCGCACGCCCGAGGCCCTGTGCAGGTCCGCTGTGCCAGCCCCAG
 CCTCGCTGCCCATGGCCCGCTGGCCCGCTGACAGGCTACCAGCTGGGCAGCTGTGGCTGGCAGCTGCAG
 GCGTCCTGGGTGCGCCCGGGGTCTTGTGGGACGTGGCGCTGGTACCCTGGCCGCGCTGGCCCTGGCT
 TTCTGGCTGGCCTGCTGTGTGCCACCACAGAGGCCCTGGAT

ACGCGTACGCGGCCGCTCGAG - GFP Tag - GTTTAA

Protein Sequence: >RG206597 representing NM_000174
 Red=Cloning site Green=Tags(s)

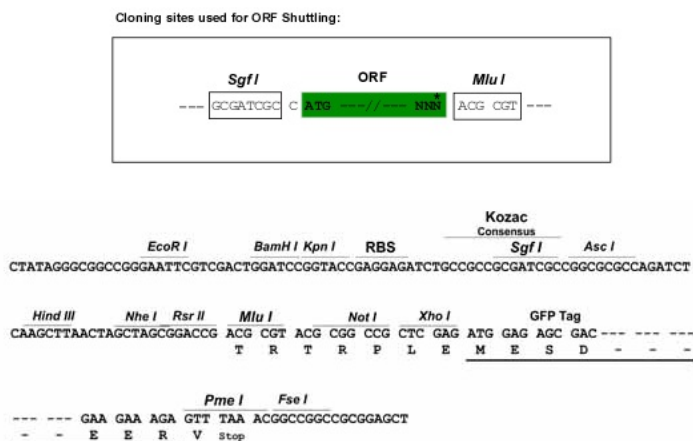
MPAWGALFLLWATAEATKDCPSPCTCRALETMGLWVDCRGLTALPALPARTRHLLLANNLSQSVPPGA
 FDHLPQLQTLQNPWHDCSLTYLRLWLEDRTPEALLQVRCASPSLAAHGPLGRLTGYQLGSCGWQLQ
 ASWVRPGVLWDVALVTVAALGLALLAGLLCATTEALD

TRTRPLE - GFP Tag - V

Restriction Sites: SgfI-MluI



[View online >](#)

Cloning Scheme:


ACCN: NM_000174

ORF Size: 531 bp

OTI Disclaimer: The molecular sequence of this clone aligns with the gene accession number as a point of reference only. However, individual transcript sequences of the same gene can differ through naturally occurring variations (e.g. polymorphisms), each with its own valid existence. This clone is substantially in agreement with the reference, but a complete review of all prevailing variants is recommended prior to use. [More info](#)

OTI Annotation: This clone was engineered to express the complete ORF with an expression tag. Expression varies depending on the nature of the gene.

Components: The ORF clone is ion-exchange column purified and shipped in a 2D barcoded Matrix tube containing 10ug of transfection-ready, dried plasmid DNA (reconstitute with 100 ul of water).

Reconstitution Method:

1. Centrifuge at 5,000xg for 5min.
2. Carefully open the tube and add 100ul of sterile water to dissolve the DNA.
3. Close the tube and incubate for 10 minutes at room temperature.
4. Briefly vortex the tube and then do a quick spin (less than 5000xg) to concentrate the liquid at the bottom.
5. Store the suspended plasmid at -20°C. The DNA is stable for at least one year from date of shipping when stored at -20°C.

RefSeq: [NM_000174.2](#), [NP_000165.1](#)

RefSeq Size: 900 bp

RefSeq ORF: 534 bp

Locus ID: 2815

UniProt ID: [P14770](#)

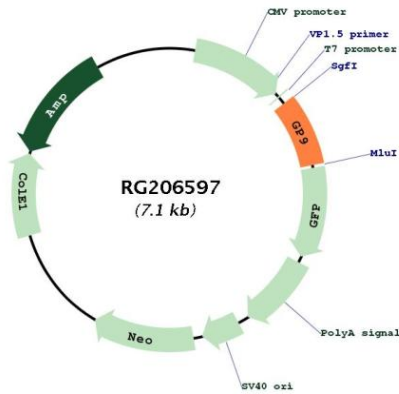
Cytogenetics: 3q21.3

Protein Families: Druggable Genome, Transmembrane

Protein Pathways: ECM-receptor interaction, Hematopoietic cell lineage

Gene Summary: This gene encodes a small membrane glycoprotein found on the surface of human platelets. It forms a 1-to-1 noncovalent complex with glycoprotein Ib, a platelet surface membrane glycoprotein complex that functions as a receptor for von Willebrand factor. The complete receptor complex includes noncovalent association of the alpha and beta subunits with the protein encoded by this gene and platelet glycoprotein V. Defects in this gene are a cause of Bernard-Soulier syndrome, also known as giant platelet disease. These patients have unusually large platelets and have a clinical bleeding tendency. [provided by RefSeq, Oct 2008]

Product images:



Circular map for RG206597