

Product datasheet for **RG206580**

SCNN1B (NM_000336) Human Tagged ORF Clone

Product data:

Product Type:	Expression Plasmids
Product Name:	SCNN1B (NM_000336) Human Tagged ORF Clone
Tag:	TurboGFP
Symbol:	SCNN1B
Synonyms:	BESC1; ENaCb; ENaCbeta; LIDLS1; SCNEB
Mammalian Cell Selection:	Neomycin
Vector:	pCMV6-AC-GFP (PS100010)
E. coli Selection:	Ampicillin (100 ug/mL)



[View online »](#)

ORF Nucleotide Sequence:

>RG206580 representing NM_000336
 Red=Cloning site Blue=ORF Green=Tags(s)

TTTTGTAATACGACTCACTATAGGGCGGCCGGAATTCGTCGACTGGATCCGGTACCGAGGAGATCTGCC
 GCC**CGGATCGCC**

ATGCACGTGAAGAAGTACCTGCTGAAGGGCCTGCATCGGCTGCAGAAGGGCCCCGGCTACACGTACAAGG
 AGCTGCTGGTGTGGTACTGCGACAACACCAACACCACGCCCCAAGCGCACCATCTGTGAGGGGCCAA
 GAAGAAAGCCATGTGGTTCCTGCTCACCCTGCTCTTCGCCGCCCTCGTCTGCTGGCAGTGGGCATCTTC
 ATCAGGACCTACTTGAGCTGGGAGGTGACAGCTCTCCCTCTCCGTAGGCTTCAAGACCATGGACTTCCCTG
 CCGTCACCATCTGCAATGCTAGCCCCTCAAGTATTCCAAAATCAAGCATTTGCTGAAGGACCTGGATGA
 GCTGATGGAAGTGTCTGGAGAGAATCCTGGCTCCTGAGCTAAGCCATGCCAATGCCACCAGGAACCTG
 AACTTCTCCATCTGGAACCACACCCCCTGGTCTTATTGATGAACGGAACCCCCACCACCCCATGGTCC
 TTGATCTCTTTGGAGACAACCACAATGGCTTAAACAAGCAGCTCAGCATCAGAAAAGATCTGTAATGCCCA
 CGGGTGCAAAATGGCCATGAGACTATGTAGCCTCAACAGGACCCAGTGTACCTTCGGAACTTCACCAGT
 GCTACCCAGGCATTGACAGAGTGGTACATCCTGCAGGCCACCAACATCTTTGCACAGGTGCCACAGCAGG
 AGCTAGTAGAGATGAGCTACCCCGGCGAGCAGATGATCCTGGCCTGCCTATTCGGAGCTGAGCCCTGCAA
 CTACCGAACTTCACGTCCATCTTACCCCTCACTATGGCAACTGTTACATCTTCAACTGGGGCATGACA
 GAGAAGGCACTTCCTTCGGCCAACCCTGGAAGTGAATTCGGCCTGAAGTTGATCCTGGACATAGGCCAGG
 AAGACTACGTCCCCTTCCTTGCCTCCACGGCCGGGGTCAAGGCTGATGCTTACAGAGCAGAGGTCATACCC
 CTTTCATCAGAGATGAGGGCATCTACGCCATGTCGGGGACAGAGACGTCCATCGGGTACTCGTGGACAAG
 CTTCAGCGCATGGGGAGCCCTACAGCCCGTGCACCGTGAATGGTCTGAGGTCCCGTCCAAAACCTTCT
 ACAGTACTACAACACGACCTACTCCATCCAGGCTGTCTTCGCTCCTGCTTCCAAGACCACATGATCCG
 TAACTGCAACTGTGGCCACTACCTGTACCCACTGCCCGTGGGGAGAAATACTGCAACAACCGGGACTTC
 CCAGACTGGGCCATTGCTACTCAGATCTACAGATGAGCGTGGCCAGAGAGAGACCTGCATTGGCATGT
 GCAAGGAGTCTGCAATGACACCCAGTACAAGATGACCATCTCCATGGCTGACTGGCCTTCTGAGGCCTC
 CGAGGACTGGATTTTCCACGTCTTGTCTCAGGAGCGGGACCAAAGCACCATAATCACCCCTGAGCAGGAAG
 GGAATTGTCAAGCTCAACATCTACTTCCAAGAATTTAACTATCGCACCATTGAAGAATCAGCAGCCAATA
 ACATCGTCTGGCTGCTCTCGAATCTGGGTGGCCAGTTGGCTTCTGGATGGGGGCTCTGTGCTGTGCCT
 CATCGAGTTTGGGAGATCATCATCGACTTTGTGTGGATCACCATCATCAAGCTGGTGGCCTTGGCCAAG
 AGCCTACGGCAGCGGGCAGCCCAAGCCAGCTACGCTGGCCACC GCCCACCGTGGCCGAGCTGGTGGAGG
 CCCACACCAACTTTGGCTTCCAGCTGACACGGCCCCCGCAGCCCAACTGGGCCCTACCCAGTGA
 GCAGGCCCTGCCATCCAGGCACCCCGCCCCCAACTATGACTCCCTGGCTCTGCAGCCGCTGGACGCT
 ATCGAGTCTGACAGTGGGGTGTGCCATC

ACGCGTACGCGGCCGCTCGAG – GFP Tag – GTTTAA

Protein Sequence:

>RG206580 representing NM_000336
 Red=Cloning site Green=Tags(s)

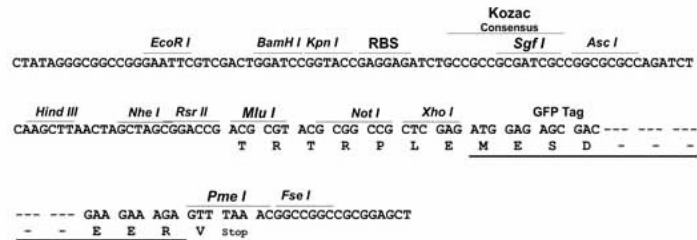
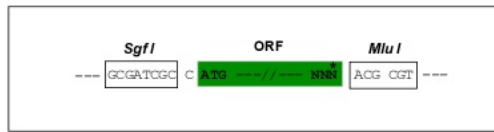
MHVKKYLLKGLHRLQKPGYTYKELLVWYCDNTNTHGPKRTICEGPKKKAMWFL TLLFAALVCWQWGIF
 IRTYLSWEVSVLSVGFKTMDFPVAVTICNASPFKYSKIKHLKDLDELMEAVLERILAPELSHANATRNL
 NFSIWNHTPLVLIDERNPHHPVLDLFGDNHNL TSSSASEKICNAHGCKMAMRLCSLNRTQCTFRNFTS
 ATQALTEWYILQATNIFAQVPQQLVEMSYPGEQMILACLFGAEP CNYRNFTSIFYPHYGNCYIFNWGMT
 EKALPSANPGTEFGLKILDIGQEDYVPFLASTAGVRLMLHEQRSYPFIRDEGIYAMSGTETSIGVLVDK
 LQRMGEPYSPCTVNGSEVPVQNFYSDYNTTYSIQACLRSFQDHMIRNCGHYLYPLPRGEKYCNRRDF
 PDWAHCYSDLQMSVAQRETCIGMCKESCNDTQYKMTIS MADWPSEASEDWIFHVL SQERDQSTNITLSRK
 GIVKLNIFYQEFNYRTIEESAANNIVWLLSNLGGQFGFWMGGSVLCLEFGEI IIDFVWITIIKLVALAK
 SLRQRRQAQSYAGPPPTVAELVEAHTNFGFQPDTPRSPNTGPYPSEQALPIPGTPPPNYDSLRLQPLDV
 IESDSEGDAI

TRTRPLE – GFP Tag – V

Restriction Sites: SgfI-MluI

Cloning Scheme:

Cloning sites used for ORF Shutting:



ACCN: NM_000336

ORF Size: 1920 bp

OTI Disclaimer: The molecular sequence of this clone aligns with the gene accession number as a point of reference only. However, individual transcript sequences of the same gene can differ through naturally occurring variations (e.g. polymorphisms), each with its own valid existence. This clone is substantially in agreement with the reference, but a complete review of all prevailing variants is recommended prior to use. [More info](#)

OTI Annotation: This clone was engineered to express the complete ORF with an expression tag. Expression varies depending on the nature of the gene.

Components: The ORF clone is ion-exchange column purified and shipped in a 2D barcoded Matrix tube containing 10ug of transfection-ready, dried plasmid DNA (reconstitute with 100 ul of water).

Reconstitution Method:

1. Centrifuge at 5,000xg for 5min.
2. Carefully open the tube and add 100ul of sterile water to dissolve the DNA.
3. Close the tube and incubate for 10 minutes at room temperature.
4. Briefly vortex the tube and then do a quick spin (less than 5000xg) to concentrate the liquid at the bottom.
5. Store the suspended plasmid at -20°C. The DNA is stable for at least one year from date of shipping when stored at -20°C.

RefSeq: [NM_000336.1](#), [NP_000327.1](#)

RefSeq Size: 2564 bp

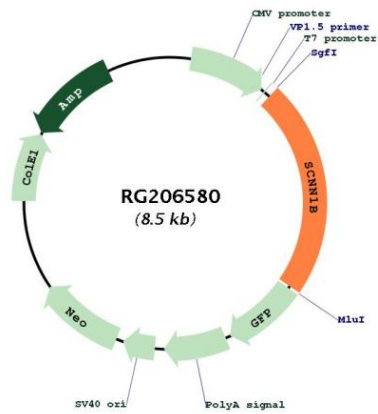
RefSeq ORF: 1923 bp

Locus ID: 6338

UniProt ID: [P51168](#)

Cytogenetics: 16p12.2
Domains: ASC
Protein Families: Druggable Genome, Ion Channels: Other, Transmembrane
Protein Pathways: Taste transduction
Gene Summary: Nonvoltage-gated, amiloride-sensitive, sodium channels control fluid and electrolyte transport across epithelia in many organs. These channels are heteromeric complexes consisting of 3 subunits: alpha, beta, and gamma. This gene encodes the beta subunit, and mutations in this gene have been associated with pseudohypoaldosteronism type 1 (PHA1), and Liddle syndrome. [provided by RefSeq, Apr 2009]

Product images:



Circular map for RG206580