

Product datasheet for **RG206565**

ARSB (NM_198709) Human Tagged ORF Clone

Product data:

Product Type:	Expression Plasmids
Product Name:	ARSB (NM_198709) Human Tagged ORF Clone
Tag:	TurboGFP
Symbol:	ARSB
Synonyms:	ASB; G4S; MPS6
Mammalian Cell Selection:	Neomycin
Vector:	pCMV6-AC-GFP (PS100010)
E. coli Selection:	Ampicillin (100 ug/mL)
ORF Nucleotide Sequence:	>RG206565 representing NM_198709 Red=Cloning site Blue=ORF Green=Tags(s)

TTTTGTAATACGACTCACTATAGGGCGGCCGGAATTCGTCGACTGGATCCGGTACCGAGGAGATCTGCC
GCC**CGATCGCC**

ATGGGTCCGCGGGCGGGCGAGCTTGCCCCGAGGCCCGGACCTCGGCGGCTGCTCCTCCCCGTCGTCC
TCCCGTCTGCTGCTGCTGTTGTTGGCGCCGGGGCTCGGGCGCCGGGGCCAGCCGGCCGCCACCT
GGTCTTCTTGGTGGCAGACGACCTAGGCTGGAACGACGTCGGCTTCCACGGCTCCCGCATCCGCACGCCG
CACCTGGACGCGCTGGCGCCGGGGTCTCCTGGACAACACTACACGCAGCCGCTGTGCACGCCGT
CGCGGAGCCAGTCTCACTGGCCGCTACCAGATCCGTACAGTTTACAGCACCATAAATCTGGCCCTG
TCAGCCCAGTGTGTTCTCTGGATGAAAACTCTGCCCCAGCTCCTAAAAGAAGCAGGTTATACTACC
CATATGGTCGGAAAATGGCACCTGGGAATGTACCGAAAAGTGCCTTCCAACCCGCCGAGGATTTGATA
CCTACTTTGGATATCTCCTGGGTAGTGAAGATTATTATCCCATGAACGCTGTACATTAATTGACGCTCT
GAATGTACACGATGTGCTCTTGATTTTCGAGATGGCGAAGAAGTTGCAACAGGATATAAAAAATGATAT
TCAACAAACATATTCACCAAAAGGGCTATAGCCCTCATAACTAACCATCCACCAGAGAAGCCTCTGTTTC
TCTACCTTGCTCTCCAGTCTGTGCATGAGCCCCCAGGTCCTGAGGAATACTGAAGCCATATGACTT
TATCCAAGACAAGAACAGGCATCACTATGCAGGAATGGTGTCCCTTATGGATGAAGCAGTAGGAAATGTC
ACTGCAGCTTTAAAAGCAGTGGGCTCTGGAACAACCGGTGTTTCATCTTTCTACAGATAACGGAGGGC
AGACTTTGGCAGGGGTAACTGCCCCCTCGAGGAAGAAAATGGAGCCTGTGGGAAGGAGCCGTCGG
AGGGGTGGGCTTTGTGGCAAGCCCTTGTGAAGCAGAAGGGCGTGAAGAACCAGGAGCTCATCCACATC
TCTGACTGGTGCACACTCGTGAAGCTGGCCAGGGACACACCAATGGCACAAGCCTCTGGATGGCT
TCGACGTGTGAAAACCATCAGTGAAGGAAGCCCATCCCCAGAATTGAGCTGCTGCATAATATTGACCC
GAACTTCGTGGACTCTTACCCTACTGGCTGAGTGTGCTGCTGTTG

ACGCGTACGCGGCCGCTCGAG - GFP Tag - GTTTAA



[View online >](#)

Protein Sequence: >RG206565 representing NM_198709
 Red=Cloning site Green=Tags(s)

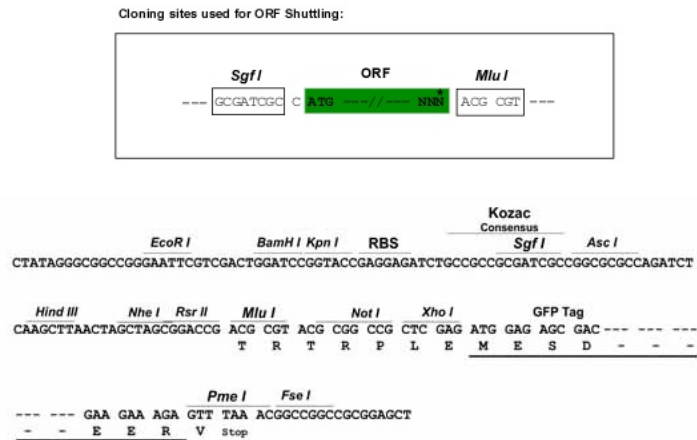
MGPRGAASLPRGPGPRRLLLPVVLPLLLLLLAPPGSGAGASRPHLVFLADDLGWNDVGFHGSRI RTP
 HLDALAAGGVLLDNYTQPLCTPSRSQLLTGRYQIRTGLQHQIIWPCQPSVPLDEKLLPQLLKEAGYTT
 HMGKWHLGMRYKECLPTRRGFDTYFGYLLGSEDIYSHERCTLIDALNVTRCALDFRDGEEVATGYKNMY
 STNIFTKRAIALITNHPPEKPLFLYLALQSVHEPLQVPEEYLKPYDFIQDKNRHHYAGMVSLMDEAVGNV
 TAALKSSGLWNNTVYFIFSTDNGGQTLAGNNWPLRGRKWSLWEGVVRGVGFVASPLLKQKGYKNRELIHI
 SDWLPVLVKLARGHTNGTKPLDGFVDVWKTISEGSPSPRIELLHNIDPNFVDSPPYWECSLLL

TRTRPLE - GFP Tag - V

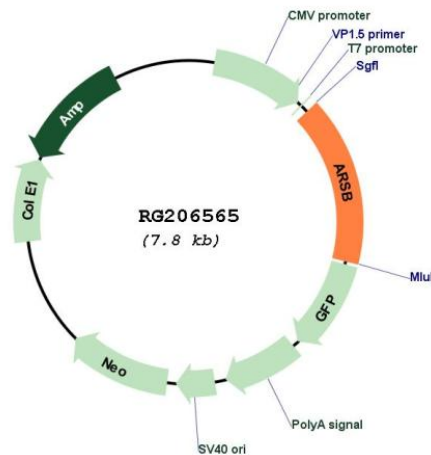
Restriction Sites:

SgfI-MluI

Cloning Scheme:



Plasmid Map:



ACCN:

NM_198709

ORF Size:	1239 bp
OTI Disclaimer:	The molecular sequence of this clone aligns with the gene accession number as a point of reference only. However, individual transcript sequences of the same gene can differ through naturally occurring variations (e.g. polymorphisms), each with its own valid existence. This clone is substantially in agreement with the reference, but a complete review of all prevailing variants is recommended prior to use. More info
OTI Annotation:	This clone was engineered to express the complete ORF with an expression tag. Expression varies depending on the nature of the gene.
Components:	The ORF clone is ion-exchange column purified and shipped in a 2D barcoded Matrix tube containing 10ug of transfection-ready, dried plasmid DNA (reconstitute with 100 ul of water).
Reconstitution Method:	<ol style="list-style-type: none">1. Centrifuge at 5,000xg for 5min.2. Carefully open the tube and add 100ul of sterile water to dissolve the DNA.3. Close the tube and incubate for 10 minutes at room temperature.4. Briefly vortex the tube and then do a quick spin (less than 5000xg) to concentrate the liquid at the bottom.5. Store the suspended plasmid at -20°C. The DNA is stable for at least one year from date of shipping when stored at -20°C.
RefSeq:	NM_198709.3
RefSeq Size:	1983 bp
RefSeq ORF:	1242 bp
Locus ID:	411
UniProt ID:	P15848
Cytogenetics:	5q14.1
Protein Families:	Druggable Genome
Protein Pathways:	Glycosaminoglycan degradation, Lysosome, Metabolic pathways
Gene Summary:	Arylsulfatase B encoded by this gene belongs to the sulfatase family. The arylsulfatase B homodimer hydrolyzes sulfate groups of N-Acetyl-D-galactosamine, chondriotin sulfate, and dermatan sulfate. The protein is targeted to the lysozyme. Mucopolysaccharidosis type VI is an autosomal recessive lysosomal storage disorder resulting from a deficiency of arylsulfatase B. Two alternatively spliced transcript variants encoding distinct isoforms have been found for this gene. [provided by RefSeq, Dec 2016]