

## Product datasheet for **RG206562**

### CD247 (NM\_000734) Human Tagged ORF Clone

#### Product data:

**Product Type:** Expression Plasmids  
**Product Name:** CD247 (NM\_000734) Human Tagged ORF Clone  
**Tag:** TurboGFP  
**Symbol:** CD247  
**Synonyms:** CD3-ZETA; CD3H; CD3Q; CD3Z; IMD25; T3Z; TCRZ  
**Mammalian Cell Selection:** Neomycin  
**Vector:** pCMV6-AC-GFP (PS100010)  
**E. coli Selection:** Ampicillin (100 ug/mL)  
**ORF Nucleotide Sequence:** >RG206562 representing NM\_000734  
 Red=Cloning site Blue=ORF Green=Tags(s)

TTTTGTAATACGACTCACTATAGGGCGGCCGGAATTCGTCGACTGGATCCGGTACCGAGGAGATCTGCC  
 GCC**CGATCGCC**

ATGAAGTGAAGGCGCTTTTCACCGGCCATCCTGCAGGCACAGTTGCCGATTACAGAGGCACAGAGCT  
 TTGGCCTGCTGGATCCCAAACCTGCTACCTGCTGGATGGAATCCTCTTCATCTATGGTGCATTCTCAC  
 TGCCTTGTTCCTGAGAGTGAAGTTCAGCAGGAGCGCAGACGCCCGCGTACCAGCAGGGCCAGAACCAG  
 CTCTATAACGAGCTCAATCTAGGACGAAGAGAGGAGTACGATGTTTTGGACAAGAGACGTGGCCGGGACC  
 CTGAGATGGGGGAAAGCCGAGAGAAGGAAGAACCCTCAGGAAGCCTGTACAATGAATGCAGAAAGA  
 TAAGATGGCGGAGGCCTACAGTGAGATTGGGATGAAAGGCGAGCGCCGGAGGGGCAAGGGGCACGATGGC  
 CTTTACCAGGTCTCAGTACAGCCACCAAGGACACCTACGACGCCCTTACATGCAGGCCCTGCCCCCTC  
 GC

**ACGCGT**ACGCGGCCGCTCGAG - GFP Tag - GTTTAA

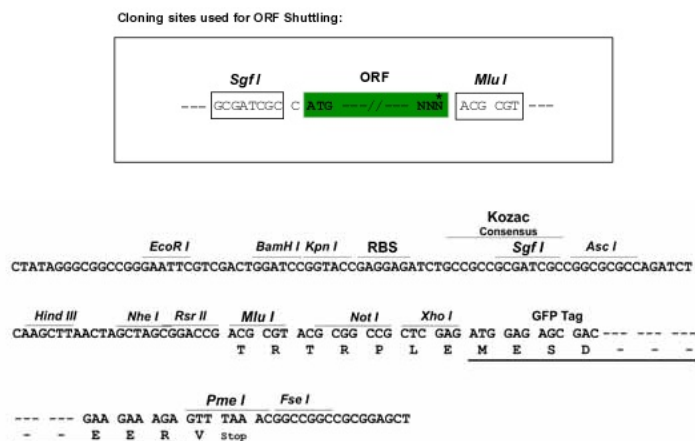
**Protein Sequence:** >RG206562 representing NM\_000734  
 Red=Cloning site Green=Tags(s)  
 MKWKALFTAAILQAQLPITEAQSFLLDPKLCYLLDGILFIYGVILTALFLRVKFSRSADAPAYQQGQNQ  
 LYNELNLGRREEYDVLDKRRGRDPEMGGKQRRKNPQEGLYNELQKDKMAEAYSEIGMKGERRRGKGHG  
 LYQGLSTATKDTYDALHMQLPPR

**TRTRPLE** - GFP Tag - V

**Restriction Sites:** SgfI-MluI



[View online >](#)

**Cloning Scheme:**


**ACCN:** NM\_000734

**ORF Size:** 492 bp

**OTI Disclaimer:** The molecular sequence of this clone aligns with the gene accession number as a point of reference only. However, individual transcript sequences of the same gene can differ through naturally occurring variations (e.g. polymorphisms), each with its own valid existence. This clone is substantially in agreement with the reference, but a complete review of all prevailing variants is recommended prior to use. [More info](#)

**OTI Annotation:** This clone was engineered to express the complete ORF with an expression tag. Expression varies depending on the nature of the gene.

**Components:** The ORF clone is ion-exchange column purified and shipped in a 2D barcoded Matrix tube containing 10ug of transfection-ready, dried plasmid DNA (reconstitute with 100 ul of water).

**Reconstitution Method:**

1. Centrifuge at 5,000xg for 5min.
2. Carefully open the tube and add 100ul of sterile water to dissolve the DNA.
3. Close the tube and incubate for 10 minutes at room temperature.
4. Briefly vortex the tube and then do a quick spin (less than 5000xg) to concentrate the liquid at the bottom.
5. Store the suspended plasmid at -20°C. The DNA is stable for at least one year from date of shipping when stored at -20°C.

**RefSeq:** [NM\\_000734.2](#), [NP\\_000725.1](#)

**RefSeq Size:** 1674 bp

**RefSeq ORF:** 492 bp

**Locus ID:** 919

**UniProt ID:** [P20963](#)

**Cytogenetics:** 1q24.2

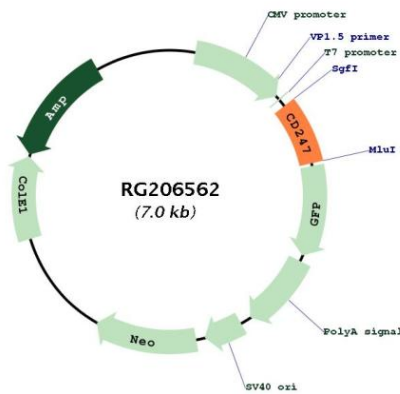
**Domains:** ITAM

**Protein Families:** Druggable Genome, Transmembrane

**Protein Pathways:** Natural killer cell mediated cytotoxicity, T cell receptor signaling pathway

**Gene Summary:** The protein encoded by this gene is T-cell receptor zeta, which together with T-cell receptor alpha/beta and gamma/delta heterodimers, and with CD3-gamma, -delta and -epsilon, forms the T-cell receptor-CD3 complex. The zeta chain plays an important role in coupling antigen recognition to several intracellular signal-transduction pathways. Low expression of the antigen results in impaired immune response. Two alternatively spliced transcript variants encoding distinct isoforms have been found for this gene. [provided by RefSeq, Jul 2008]

**Product images:**



Circular map for RG206562