

Product datasheet for **RG206537**

NSP3 (SH2D3C) (NM_005489) Human Tagged ORF Clone

Product data:

Product Type:	Expression Plasmids
Product Name:	NSP3 (SH2D3C) (NM_005489) Human Tagged ORF Clone
Tag:	TurboGFP
Symbol:	NSP3
Synonyms:	CHAT; NSP3; PRO34088; SHEP1
Mammalian Cell Selection:	Neomycin
Vector:	pCMV6-AC-GFP (PS100010)
E. coli Selection:	Ampicillin (100 ug/mL)



[View online »](#)

**ORF Nucleotide
Sequence:**

>RG206537 representing NM_005489
 Red=Cloning site Blue=ORF Green=Tags(s)

TTTTGTAATACGACTCACTATAGGGCGGCCGGAATTCGTCGACTGGATCCGGTACCGAGGAGATCTGCC
 GCC**CGGATCGCC**

ATGACTGTGTGGGCCGAAGGTGCCCGCGCTGGGGTCCCAGGGGCTGCTGGAGAGCCAGAGGCTGGCA
 GCGACTATGTGAAGTTCTCCAAGGAGAAGTACATCCTGGACTCATCGCCAGAGAACTCCACAAGGAATT
 GGAGGAGGAGCTCAAACCTCAGCAGCAGGATCTCCGCAGCCATGCCTGGTACCATGGCCGCATCCCCGA
 GAGGTCTCGGAGACCTTGGTACAACGCAACGGCGACTTCCTCATCCGGGACTCACTCACCAGCCTGGGCG
 ACTATGTGCTCACGTGCCGCTGGCGCAACCAGGCCTTGCACTTCAAGATCAACAAGGTGGTGGTGAAGGC
 AGGCGAGAGCTACACACACATCCAGTACCTGTTTGAGCAGGAGAGCTTTGACCACGTGCCCGCCCTCGTG
 CGTATCATGTGGGCAGCCGCAAGGCTGTGTGAGCAGAGTGGTCCATCATCTACTGCCCGTGAACC
 GCACCTTCCCACTGCGCTACCTCGAGGCCAGCTATGGCCTGGGACAGGGGAGTAGCAAGCCTGCTAGCCC
 CGTCAGCCCTCAGGCCCAAGGGCAGCCACATGAAGCGGCGCAGCGTCACCATGACCGATGGGCTCACT
 GCTGACAAGGTACCCCGCAGCGATGGCTGCCCCACCAGTACGTGCTGCCCGCCCTCGGGACTCCATCC
 GCAGCTGTGCCCTCAGCATGGACCAGATCCCAGACCTGCACTCACCCATGTGCGCCATCTCCGAGAGCCC
 TAGCTCCCCTGCCTACAGCACTGTAACCCGTGTCCATGCCGCCCTGCAGCCCCTTCTGCCACAGCATTG
 CCTGCCTCCCCTGTGCGCCGCCGTTCCAGTGAGCCCCAGCTGTGTCCCGAAGTGCCCCAAAGACCCATG
 GGGAGTCAGACAAGGGCCCCACACCAGCCCCTCCACACCCTTGGCAAGGCCTCCCCGTACCATCACT
 CAGCAGCTACAGTGACCCGGACTCTGGCCACTACTGCCAGCTCCAGCCTCCCGTGCCTGGCAGCCGAGAG
 TGGGCAGCGACTGAGACCTCCAGCCAGCAGGCCAGGAGCTATGGGAGAGGCTAAAGGAACTGTGAGAAA
 ATGGGGCCCCTGAAGGGGACTGGGGCAAGACCTTCACAGTCCCCATCGTGGAAAGTCACTTCTTCTCAA
 CCCGGCCACCTTCCAGTCACTACTGATCCCCAGGGATAACCGGCCACTGGAGGTGGGCCTTCTGCGCAAG
 GTC AAGGAGCTGTGGCAGAAGTGGATGCCCGGACGCTGGCCCGCATGTACCAAGGTGGACTGCCTGG
 TTGCTAGGATACTGGGCGTTACCAAGGAGATGCAGACCCTAATGGGAGTCCGCTGGGGCATGGAAGTGT
 CACCCTCCCCATGGCCGGCAGCTACGCCTAGACCTGCTGGAAAGGTTCCACACCATGTCCATCATGCTG
 GCCGTGGACATCCTGGGCTGCACCGCTCTGCGGAGGAGCGGGCAGCGCTGCTGCACAAGACCATTGAGC
 TGGCGGCCGAGCTGCGGGGACTATGGGCAACATGTTGAGCTTCGCGCGGTCATGGGTGCCCTGGACAT
 GGCTCAGATTTCTCGGCTGGAGCAGACATGGGTGACCCTGCGGCAGCGACACACAGAGGGTCCATCCTG
 TACGAGAAGAAGCTCAAGCCTTTCTCAAGAGCCTCAACGAGGGCAAAGAAGGCCCGCCGCTGAGCAACA
 CCACGTTTCTCATGTGCTGCCCTCATACCCTGCTGGAGTGTGACTCGGCCCCACCAGAGGGCCCTGA
 GCCTGGGGCAGCACGGAGCACGGCGTGGAGGTGGTGGTGGCTCACCTGGAGGCCGCCGCACAGTGGCA
 CACCACGGAGGCCTGTACCACACCAATGCTGAAGTCAAGTGCAGGGGTTCCAGGCCCGCCGGAGCTCC
 TGGAGGTGTTGAGCAGGAGTCCAGATGCGCCTTCTCTGGGCGAGTCAAGGTGCCAGCAGCAGCCAGGC
 CCGGCGCTATGAGAAGTTCGACAAGTCTCACTGCCCTGTCCCAAGCTGGAACCTGTGCTCCGCTCC
 AGCGAGCTG

ACGCGTACGCGGCCGCTCGAG - GFP Tag - GTTTAA

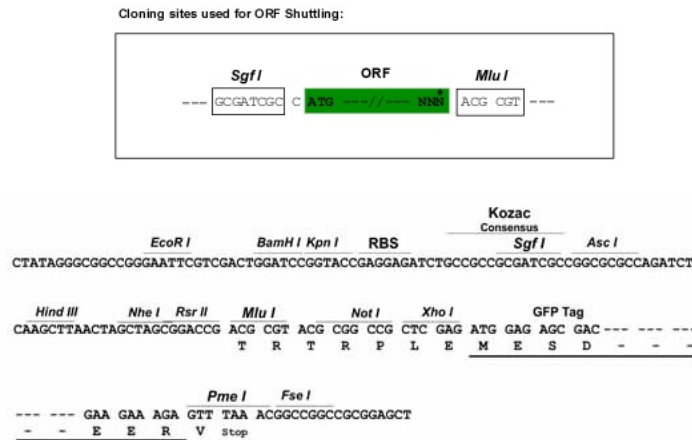
Protein Sequence: >RG206537 representing NM_005489
 Red=Cloning site Green=Tags(s)

```
MTAVGRRCPALGSRGAAGEPEAGSDYVKFSKEKYILDSSPEKLHKELEEELKLSSTDLRSHAWYHGRIPR
EVSETLVQRNGDFLIRDSLTSLDGYVLTCRWRNQALHFKINKVVVKAGESYTHIQYLFEQESFDHVPALV
RYHVGSRKAVSEQSGAIIYCPVNRTPFLRYLEASYGLGQGSSKPA SPVSPSGPKGSHMKRRSVTMDGLT
ADKVTRSDGCPTSTSLPRPRDSIRSCALSMQDIPDLHSPMSPISESPSSPAYSTVTRVHAAPAAPSATAL
PASPVARRSSEPLCPGSAPKTHGESDKGPHTSPSHTLGKASPSLSYSDPDSGHYCQLQPPVGRSRE
WAATETSSQARSYGERLKELENGAPEGDWGTFTVPIVEVTSFNPATFQSLLIPRDNRPLEVGLLRK
VKELLAEDVARTLARHVTKVDCLVARILGVTKEMQTLMGVVRWGMELLTLPHGRQLRLDLLERFHTMSIML
AVDILGCTGSAEERAALLHKTIQLAAELRGTMGNMFSAAVMGALDMAQISRLEQTWVTLRQRHTEGAIL
YEKLLKPFLLKSLNEGKEGPPLSNTTFPHVPLPLITLLECD SAPPEGPEPWGSTEHGVEVLAHLEAARTVA
HHGGLYHTNAEVKLQGFQARPELLEVFSTEFQMRLWWSQGASSQARRYEKFDKVLTA LSHKLEPAVRS
SEL
```

TRTRPLE - GFP Tag - V

Restriction Sites: SgfI-MluI

Cloning Scheme:



ACCN: NM_005489

ORF Size: 2109 bp

OTI Disclaimer: The molecular sequence of this clone aligns with the gene accession number as a point of reference only. However, individual transcript sequences of the same gene can differ through naturally occurring variations (e.g. polymorphisms), each with its own valid existence. This clone is substantially in agreement with the reference, but a complete review of all prevailing variants is recommended prior to use. [More info](#)

OTI Annotation: This clone was engineered to express the complete ORF with an expression tag. Expression varies depending on the nature of the gene.

Components: The ORF clone is ion-exchange column purified and shipped in a 2D barcoded Matrix tube containing 10ug of transfection-ready, dried plasmid DNA (reconstitute with 100 ul of water).

Reconstitution Method:

1. Centrifuge at 5,000xg for 5min.
2. Carefully open the tube and add 100ul of sterile water to dissolve the DNA.
3. Close the tube and incubate for 10 minutes at room temperature.
4. Briefly vortex the tube and then do a quick spin (less than 5000xg) to concentrate the liquid at the bottom.
5. Store the suspended plasmid at -20°C. The DNA is stable for at least one year from date of shipping when stored at -20°C.

RefSeq: [NM_005489.1](#), [NP_005480.1](#)

RefSeq Size: 2164 bp

RefSeq ORF: 2112 bp

Locus ID: 10044

UniProt ID: [Q8N5H7](#)

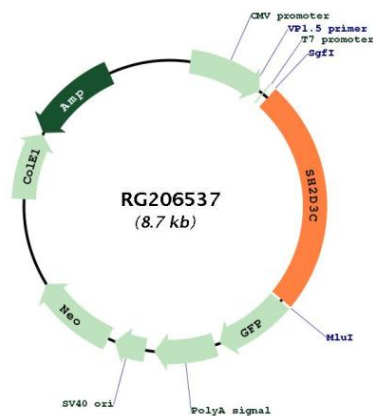
Cytogenetics: 9q34.11

Domains: SH2, RasGEF

Protein Families: Druggable Genome

Gene Summary: This gene encodes an adaptor protein and member of a cytoplasmic protein family involved in cell migration. The encoded protein contains a putative Src homology 2 (SH2) domain and guanine nucleotide exchange factor-like domain which allows this signaling protein to form a complex with scaffolding protein Crk-associated substrate. Multiple transcript variants encoding different isoforms have been found for this gene. [provided by RefSeq, Nov 2011]

Product images:



Circular map for RG206537