

Product datasheet for **RG206523**

Macrophage Inflammatory Protein 3 beta (CCL19) (NM_006274) Human Tagged ORF Clone

Product data:

Product Type: Expression Plasmids
Product Name: Macrophage Inflammatory Protein 3 beta (CCL19) (NM_006274) Human Tagged ORF Clone
Tag: TurboGFP
Symbol: Macrophage Inflammatory Protein 3 beta
Synonyms: CKb11; ELC; MIP-3b; MIP3B; SCYA19
Mammalian Cell Selection: Neomycin
Vector: pCMV6-AC-GFP (PS100010)
E. coli Selection: Ampicillin (100 ug/mL)
ORF Nucleotide Sequence: >RG206523 representing NM_006274
Red=Cloning site Blue=ORF Green=Tags(s)

TTTGTAAATACGACTCACTATAGGGCGGCCGGAATTCGTCGACTGGATCCGGTACCGAGGAGATCTGCC
GCC**CGATCGCC**

ATGGCCCTGCTACTGGCCCTCAGCCTGCTGGTTCTCTGGACTTCCCCAGCCCCAACTCTGAGTGGCACCA
ATGATGCTGAAGACTGCTGCCTGTCTGTGACCCAGAAACCCATCCCTGGGTACATCGTGAGGAACCTCCA
CTACCTTCTCATCAAGGATGGTGCAGGGTGCCTGCTGTAGTGTTCACCACACTAGGGGGCCGCCAGCTC
TGTGCACCCCGAGACCAGCCCTGGGTAGAACGCATCATCCAGAGACTGCAGAGGACCTCAGCCAAGATGA
AGCGCCGCAGCAGT

ACGCGTACGCGGCCGCTCGAG - GFP Tag - GTTTAA

Protein Sequence: >RG206523 representing NM_006274
Red=Cloning site Green=Tags(s)

MALLLALSLLVLWTSPAPTLSGTNDACCLSVTQKPIPGYIVRNFHYLLIKDGCRVPAVFTTLRGRQL
CAPPDQPWVERIIQRLQRTSAKMKRRSS

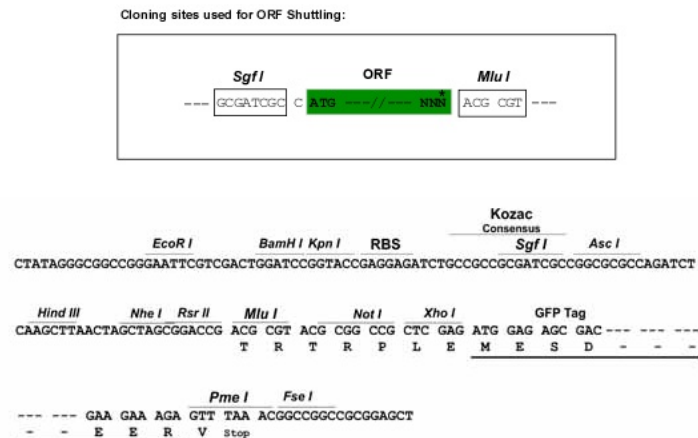
TRTRPLE - GFP Tag - V

Restriction Sites: SgfI-MluI



[View online »](#)

Cloning Scheme:



ACCN: NM_006274

ORF Size: 294 bp

OTI Disclaimer: The molecular sequence of this clone aligns with the gene accession number as a point of reference only. However, individual transcript sequences of the same gene can differ through naturally occurring variations (e.g. polymorphisms), each with its own valid existence. This clone is substantially in agreement with the reference, but a complete review of all prevailing variants is recommended prior to use. [More info](#)

OTI Annotation: This clone was engineered to express the complete ORF with an expression tag. Expression varies depending on the nature of the gene.

Components: The ORF clone is ion-exchange column purified and shipped in a 2D barcoded Matrix tube containing 10ug of transfection-ready, dried plasmid DNA (reconstitute with 100 ul of water).

Reconstitution Method: 1. Centrifuge at 5,000xg for 5min.
2. Carefully open the tube and add 100ul of sterile water to dissolve the DNA.
3. Close the tube and incubate for 10 minutes at room temperature.
4. Briefly vortex the tube and then do a quick spin (less than 5000xg) to concentrate the liquid at the bottom.
5. Store the suspended plasmid at -20°C. The DNA is stable for at least one year from date of shipping when stored at -20°C.

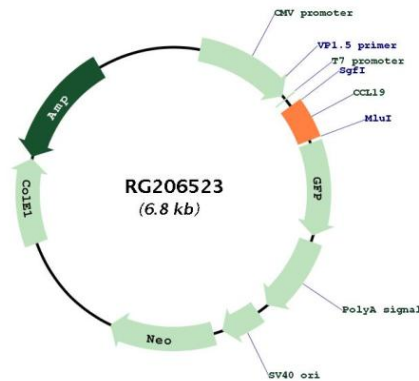
RefSeq: [NM_006274.3](#)

RefSeq Size: 684 bp

RefSeq ORF: 297 bp

Locus ID:	6363
UniProt ID:	Q99731
Cytogenetics:	9p13.3
Protein Families:	Druggable Genome, Secreted Protein
Protein Pathways:	Chemokine signaling pathway, Cytokine-cytokine receptor interaction
Gene Summary:	This antimicrobial gene is one of several CC cytokine genes clustered on the p-arm of chromosome 9. Cytokines are a family of secreted proteins involved in immunoregulatory and inflammatory processes. The CC cytokines are proteins characterized by two adjacent cysteines. The cytokine encoded by this gene may play a role in normal lymphocyte recirculation and homing. It also plays an important role in trafficking of T cells in thymus, and in T cell and B cell migration to secondary lymphoid organs. It specifically binds to chemokine receptor CCR7. [provided by RefSeq, Sep 2014]

Product images:



Circular map for RG206523