

## Product datasheet for **RG206483**

### **ZNFN1A2 (IKZF2) (NM\_001079526) Human Tagged ORF Clone**

#### **Product data:**

Product Type:	Expression Plasmids
Product Name:	ZNFN1A2 (IKZF2) (NM_001079526) Human Tagged ORF Clone
Tag:	TurboGFP
Symbol:	ZNFN1A2
Synonyms:	ANF1A2; HELIOS; ZNF1A2; ZNFN1A2
Mammalian Cell Selection:	Neomycin
Vector:	pCMV6-AC-GFP (PS100010)
E. coli Selection:	Ampicillin (100 ug/mL)



[View online »](#)

**ORF Nucleotide Sequence:**

>RG206483 representing NM\_001079526  
 Red=Cloning site Blue=ORF Green=Tags(s)

TTTTGTAATACGACTCACTATAGGGCGGCCGGAATTCGTCGACTGGATCCGGTACCGAGGAGATCTGCC  
 GCC**CGGATCGCC**

ATGGAACAGAGGCTATTGATGGCTATATAACGTGTGACAATGAGCTTTCACCCGAAAGGGAGCACTCCA  
 ATATGGCAATTGACCTCACCTCAAGCACACCCAATGGACAGCATGCCTCACCAAGTCACATGACAAGCAC  
 AAATTCAGTAAAGCTAGAAATGCAGAGTATGAAGAGTGTGACAGGAAACCCCTGAGCCGTGAAGATGAG  
 ATCAGGGGCCATGATGAGGGTAGCAGCCTAGAAGAACCCCTAATTGAGAGCAGCGAGGTGGCTGACAACA  
 GGAAAGTCCAGGAGCTTCAAGGCGAGGGAGGAATCCGGCTTCCGAATGGTGAACGCCCTTCCACTGTAA  
 CCAGTGTGGAGCTTCTTTACTCAGAAGGGCAACCTTCTGAGACACATAAAGTTACTCTGGAGAGAAG  
 CCGTTCAAATGTCCTTTCTGTAGCTACGCCTGTAGAAGAAGGGACGCCCTCACAGGACACCTCAGGACCC  
 ATCTGTGGGTAAACCTCACAAGTGCAACTACTGTGGACGAAGCTACAAGCAGCGCAGTTCCTGGAGGA  
 GCACAAGGAACGCTGCCACAATCTCCAGAATGTCAGCATGGAGGCTGCTGGGAGGTCATGAGTCAC  
 CATGTACCTCCTATGGAAGATTGTAAGGAACAAGAGCCTATTATGGACAACAATATTTCTCTGGTGCCTT  
 TTGAGAGACCTGCTGTCATAGAGAAGCTCACGGGAATATGGGAAAACGTAAAAGCTCCACTCCACAAAA  
 GTTTGTGGGGGAAAAGCTCATGCGATTACAGCTACCCAGATATTCCTTTGATATGAACTTAACATATGAG  
 AAGGAGGCTGAGCTGATGAGTCTCATATGATGGACCAAGCCATCAACAATGCAATCACCTACCTTGGAG  
 CTGAGGCCCTTACCCTCTGATGACAGCACCCGCCAAGCACAATCGCTGAAGTGGCCCCAGTTATAAGCTC  
 AGCTTATTCTCAGGTCTATCATCAAATAGGATAGAAAGACCCATTAGCAGGGAAACTGCTGATAGTCAT  
 GAAAACAACATGGATGGCCCCATCTCTCATCAGACCAAGAGTCGACCCAGGAAAGAGAGGCCCTCTC  
 CCAGCAATAGCTGCCTGGATTCCACTGACTCAGAAAGCAGCCATGATGACCACCAGTCTACCAAGGCTC  
 CCCTGCCTTAAATCCCAAGAGGAAACAAAGCCAGCTTACATGAAGGAGGATGTCAAAGCTTTGGATACT  
 ACCAAGGCTCCTAAGGGCTCTCTGAAGGACATCTACAAGTCTTCAATGGAGAAGGAGAACAGATTAGGG  
 CCTTCAAGTGTGAGCACTGCCGAGTCTTTTCTAGACCATGTCATGTACACCATTACATGGGTTGCCA  
 TGGCTACCGGGACCCACTGGAATGCAACATCTGTGGCTACAGAAGCCAGGACCGTTATGAGTTTTATCA  
 CACATTGTTGAGGGGAGCACACATTCCAC

**ACGCGTACGCGGCCGCTCGAG** – GFP Tag – GTTTAA

**Protein Sequence:**

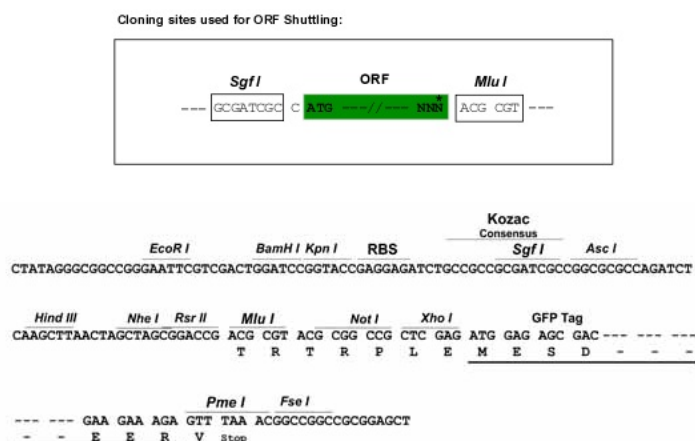
>RG206483 representing NM\_001079526  
 Red=Cloning site Green=Tags(s)

METEAIDGYITCDNELSPEREHSNMAIDLTSSTPNGQHASPSHMTSTNSVKLEMQSDEECDRKPLSREDE  
 IRGHDEGSSLEEPLIESSEVADNRKVQELQEGGIRLPNGERPFCNQCASFTQKGNLLRHIKLSGEEK  
 PFKCPCFSYACRRRDALTGHLRTHSVGKPHKCNKGRSYQRSSLEEHKERCHNYLQNVSMEEAAGQVMSH  
 HVPPMEDCKEQEPIMDNNISLVPFERPAVIEKLTGNMGRKSSSTPQKFGVEKLMRFSYDPDIHFDMLTYE  
 KEAELMQSHMMDQAINNAITYLGAELHPLMQHPPSTIAEVAPVISSAYSQVYHPNRIERPI SRETADSH  
 ENNMDGPI SLIRPKSRPQEREASPSNSCLDSTDSESSHDDHQSYQGHPALNPKRKQSPAYMKEDVKALDT  
 TKAPKGSCLKDIYKVFNGEGEQIRAFKCEHCRVLFLDHVMYTIHMGCHGYRDPLECNICGYRSQDRYEFSS  
 HIVRGEHTFH

**TRTRPLE** – GFP Tag – V

**Restriction Sites:**

Sgfl-MluI

**Cloning Scheme:**


**ACCN:** NM\_001079526

**ORF Size:** 1500 bp

**OTI Disclaimer:** Due to the inherent nature of this plasmid, standard methods to replicate additional amounts of DNA in E. coli are highly likely to result in mutations and/or rearrangements. Therefore, OriGene does not guarantee the capability to replicate this plasmid DNA. Additional amounts of DNA can be purchased from OriGene with batch-specific, full-sequence verification at a reduced cost. Please contact our customer care team at [custsupport@origene.com](mailto:custsupport@origene.com) or by calling 301.340.3188 option 3 for pricing and delivery.

The molecular sequence of this clone aligns with the gene accession number as a point of reference only. However, individual transcript sequences of the same gene can differ through naturally occurring variations (e.g. polymorphisms), each with its own valid existence. This clone is substantially in agreement with the reference, but a complete review of all prevailing variants is recommended prior to use. [More info](#)

**OTI Annotation:** This clone was engineered to express the complete ORF with an expression tag. Expression varies depending on the nature of the gene.

**Components:** The ORF clone is ion-exchange column purified and shipped in a 2D barcoded Matrix tube containing 10ug of transfection-ready, dried plasmid DNA (reconstitute with 100 ul of water).

**Reconstitution Method:**

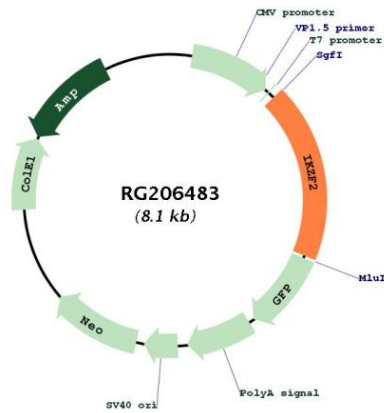
1. Centrifuge at 5,000xg for 5min.
2. Carefully open the tube and add 100ul of sterile water to dissolve the DNA.
3. Close the tube and incubate for 10 minutes at room temperature.
4. Briefly vortex the tube and then do a quick spin (less than 5000xg) to concentrate the liquid at the bottom.
5. Store the suspended plasmid at -20°C. The DNA is stable for at least one year from date of shipping when stored at -20°C.

**RefSeq:** [NM\\_001079526.2](#)

RefSeq Size: 9512 bp  
 RefSeq ORF: 1503 bp  
 Locus ID: 22807  
 UniProt ID: [Q9UKS7](#)  
 Cytogenetics: 2q34

**Gene Summary:** This gene encodes a member of the Ikaros family of zinc-finger proteins. Three members of this protein family (Ikaros, Aiolos and Helios) are hematopoietic-specific transcription factors involved in the regulation of lymphocyte development. This protein forms homo- or heterodimers with other Ikaros family members, and is thought to function predominantly in early hematopoietic development. Multiple transcript variants encoding different isoforms have been found for this gene, but the biological validity of some variants has not been determined. [provided by RefSeq, Jul 2008]

**Product images:**



Circular map for RG206483