

Product datasheet for **RG206480**

PKD2L1 (NM_016112) Human Tagged ORF Clone

Product data:

Product Type:	Expression Plasmids
Product Name:	PKD2L1 (NM_016112) Human Tagged ORF Clone
Tag:	TurboGFP
Symbol:	PKD2L1
Synonyms:	PCL; PKD2L; PKDL; TRPP3
Mammalian Cell Selection:	Neomycin
Vector:	pCMV6-AC-GFP (PS100010)
E. coli Selection:	Ampicillin (100 ug/mL)



[View online »](#)

**ORF Nucleotide
Sequence:**

>RG206480 representing NM_016112
 Red=Cloning site Blue=ORF Green=Tags(s)

TTTTGTAATACGACTCACTATAGGGCGGCCGGAATTCGTCGACTGGATCCGGTACCGAGGAGATCTGCC
 GCC**CGGATCGCC**

ATGAATGCTGTGGGAAGTCTGAGGGCAGGAGCTGCAAAGCTGGGAGTGGAGCTGGGACAACCCCG
 CCTACAGTGGTCCCCCTTCCCCACAGGACGCTGAGAGTCTGCACCATCTCCAGCACGGGGCCTCCA
 GCCCAACCCAAGAAGCCTGAAGATGAACCCAGGAGACGGCATACAGGACCCAGGTGTCCAGCTGCTGC
 CTCCATATCTGTCAAGGCATCAGAGGACTTTGGGGAACAACCCTGACTGAGAACACAGCTGAGAACCGGG
 AACTTTATATCAAGACCACCCTGAGGGAGCTGTTGGTATATATTGTTCCTGGTGGACATCTGTCTACT
 GACCTATGGAATGACAAGCTCCAGTCTTATTACTACACCAAAGTGATGTCTGAGCTCTTCTTACATACT
 CCATCAGACACTGGAGTCTCTTTCAGGCCATCAGCAGCATGGCGGACTTCTGGGATTTTGGCCAGGGCC
 CACTACTGGACAGTTTGTATTGGACCAATGGTACAACAACCAGAGCCTGGGCCATGGCTCCCCTCCTT
 CATCTACTATGAGAACATGCTGTGGGGTTCCGAGGCTGCGGCAGCTAAAGGTCGCAATGACTCCTGT
 GTGGTGCATGAAGACTTCCGGGAGGACATTCTGAGCTGCTATGATGTCTACTCTCCAGACAAAGAAGAAC
 AACTCCCCTTTGGGCCCTTCAATGGCACAGCGTGGACATACCACTCGCAGGATGAGTTGGGGGGCTTCTC
 CCACTGGGGCAGGCTCACAAGCTACAGCGGAGGTGGCTACTACCTGGACCTTCCAGGATCCCAGACGGGT
 AGTGCAGAGGCTCTCCGGGCCCTTCCAGGAGGGCTGTGGCTGGACAGGGGCACTCGAGTGGTGTTCATCG
 ACTTCTCAGTCTACAATGCCAATATCAATCTTTTCTGTCTGAGGCTGGTGGTGGAGTTTCCAGCTAC
 AGGAGGTGCCATCCCCTGGCAAATCCGCACAGTCAAGCTGATCCGCTATGTCAGCAACTGGGACTTC
 TTTATCGTTGGCTGTGAGGTCACTTCTGCGTCTTCATCTTCTACTATGTGGTGGAAAGAGATCCTGGAGC
 TCCACATTCACCGGCTTCGCTACCTCAGCAGCATCTGGAACATACTGGACCTGGTGGTCACTTTGCTCTC
 CATTGTGGCTGTGGGCTTCCACATATCCGAACCTCGAGGTGAATCGGCTCATGGGGAAGCTCCTGCAG
 CAGCCAAACACGTATGCAGACTTTGAGTTCCTCGCCTTCTGGCAGACACAGTACAACAACATGAATGCTG
 TCAACCTCTTCTCGCCTGGATCAAGATATTCAAGTACATCAGCTTCAACAAAACCATGACCCAGCTCTC
 CTCCACGCTGGCCCGCTGTGCCAAGGACATCCTGGGCTTCGCGCTCATGTTCTTCATTGTTTTCTCGCC
 TATGCCAACTCGGCTACCTGCTTTTGGGACCAAGTGGAAAACCTTAGCACTTTCATCAAGTGCATTT
 TCACTCAGTTCGGATAATCCTCGGGGACTTTGACTACAATGCTATCGACAATGCCAACCGCATCCTGGG
 CCCTGCCTACTTTGTACCTATGTCTTCTCGTCTTCTCGTCTCCTGAACATGTTCTCGCCATCATC
 AATGACACATATTCAGAGGTCAAGGAGGAGCTGGCTGGACAGAAGGATGAGCTGCAACTTCTGACCTCC
 TGAACAGGGCTACAACAAGACCCTACTAAGACTGCGTCTGAGGAAGGAGAGGGTTTCGGATGTGCAGAA
 GGTCTGCAGGTTGGGAGCAGGAGATCCAGTTTGAGGATTTACCAACACCTTAAGGGAACCTGGGACAC
 GCAGAGCATGAAATCACTGAGCTCACGGCCACCTTACCAGTTTGACAGAGATGGGAATCGTATTCTGG
 ATGAGAAGGAACAGGAAAAATGCGACAGGACCTGGAGGAAGAGAGGGTGGCCCTCAACACTGAGATTGA
 GAAACTAGGCCGATCTATTGTGAGCAGCCACAAGGCAATCGGGTCCAGAGGCTGCCAGAGCAGGAGGC
 TGGGTTTCAGGAGAAGAATTCTACATGCTCACAAGGAGAGTTCTGCAGCTGGAGACTGTCTGGAAGGAG
 TAGTGTCCAGATTGATGCTGTAGGCTCAAAGCTGAAAATGCTGGAGAGGAAGGGGTGGCTGGCTCCCTC
 CCCAGGCGTGAAGGAACAAGCTATTTGGAAGCACCCGACCCAGCCAGCTGTGACCCAGACCCCTGG
 GGAGTCCAGGGTGGGCAGGAGAGTGAGGTTCCCTATAAAAGAGAAGGAAGCCTTAGAGGAGAGGAGAC
 TCTCCCGTGGTGAAGTTCACGTTGCAGAGGAGT

ACGCGTACGCGGCCGCTCGAG - GFP Tag - GTTTAA

Protein Sequence: >RG206480 representing NM_016112
 Red=Cloning site Green=Tags(s)

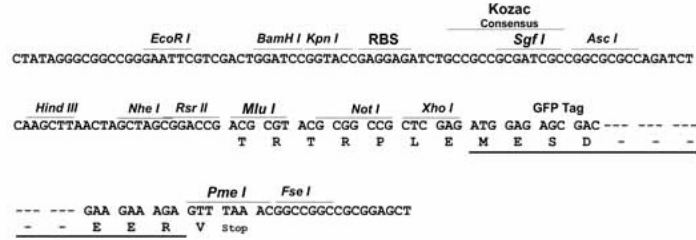
MNAVGSPEGQELQKLGSGAWDNPAISGPPSPHGTLRVCTISSTGPLQPQPKPEDEPQETAYRTQVSSCC
 LHICQGIRGLWGTTLTENTAENRELYIKTTLRELLVYIVFLVDICLLTYGMTSSSAYYYTKVMSEFLHT
 PSDTGVSFQAISSMADFWDFAQGPLLDLSLYWTKWYNNQSLGHGSHSFIYYENMLLGVPRLRQLKVRNDSC
 VVHEDFREDILSCYDVYSPDKEEQLPFGPFNGTAWTYHSQDELGGF SHWGRLTSYSGGGYYLDLPGSRQG
 SAEALRALQEGWLDRGTRVVFIDFSVYNANINLFCVLRLLVVEFPATGGAI PSWQIRTVKLI RYVSNWDF
 FIVGCEVIFCVFIFYVVEEILELHIHRLRYLSSIWNILDVILL SIVAVGFHIFRTLEV NRMGKLLQ
 QPNTYADFEFLAFWQTQYNNMNAVNLFFAWIKIFKYISFNKTMTQLSSTLARCAKDILGFVMMFFIVFFA
 YAQLGYLLFGTQVENFSTFIKCI FTQFRIILGDFDYNAIDNANRILGPAYFVTYVFFVFFVLLNMFLAII
 NDTYSEVKEELAGQKDELQLSDLLKQGYNKTLRLRLRKERVSDVQKVLQGGEQEIQFEDFTNTLRELGH
 AEHEITELTATFTKFD RDGNRILDEKEQEKMRQDLEEERVALNTEIEKLGRSIVSSPQGKSGPEAARAGG
 WVS GEEFYMLTRRVLQLETVLEGVVSQIDAVGSKLKMLERKGLWAPSPGVKEQAIWKHPQPAPAVTPDPW
 GVQGGQSESEVPYKREEEALEERLSRGEIPTLQRS

TRTRPLE - GFP Tag - V

Restriction Sites: Sgfl-MluI

Cloning Scheme:

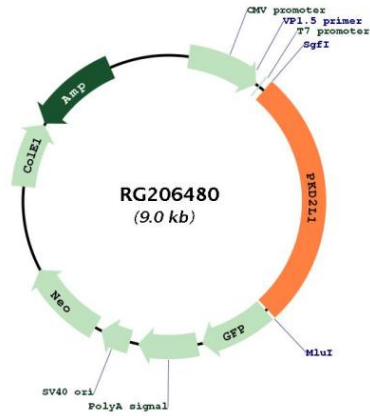
Cloning sites used for ORF Shutting:



ACCN: NM_016112
ORF Size: 2415 bp

OTI Disclaimer:	<p>Due to the inherent nature of this plasmid, standard methods to replicate additional amounts of DNA in E. coli are highly likely to result in mutations and/or rearrangements. Therefore, OriGene does not guarantee the capability to replicate this plasmid DNA. Additional amounts of DNA can be purchased from OriGene with batch-specific, full-sequence verification at a reduced cost. Please contact our customer care team at custsupport@origene.com or by calling 301.340.3188 option 3 for pricing and delivery.</p> <p>The molecular sequence of this clone aligns with the gene accession number as a point of reference only. However, individual transcript sequences of the same gene can differ through naturally occurring variations (e.g. polymorphisms), each with its own valid existence. This clone is substantially in agreement with the reference, but a complete review of all prevailing variants is recommended prior to use. More info</p>
OTI Annotation:	<p>This clone was engineered to express the complete ORF with an expression tag. Expression varies depending on the nature of the gene.</p>
Components:	<p>The ORF clone is ion-exchange column purified and shipped in a 2D barcoded Matrix tube containing 10ug of transfection-ready, dried plasmid DNA (reconstitute with 100 ul of water).</p>
Reconstitution Method:	<ol style="list-style-type: none">1. Centrifuge at 5,000xg for 5min.2. Carefully open the tube and add 100ul of sterile water to dissolve the DNA.3. Close the tube and incubate for 10 minutes at room temperature.4. Briefly vortex the tube and then do a quick spin (less than 5000xg) to concentrate the liquid at the bottom.5. Store the suspended plasmid at -20°C. The DNA is stable for at least one year from date of shipping when stored at -20°C.
RefSeq:	NM_016112.3
RefSeq Size:	3060 bp
RefSeq ORF:	2418 bp
Locus ID:	9033
UniProt ID:	Q9P0L9
Cytogenetics:	10q24.31
Protein Families:	Druggable Genome, Ion Channels: Transient receptor potential, Transmembrane
Gene Summary:	<p>This gene encodes a member of the polycystin protein family. The encoded protein contains multiple transmembrane domains, and cytoplasmic N- and C-termini. The protein may be an integral membrane protein involved in cell-cell/matrix interactions. This protein functions as a calcium-regulated nonselective cation channel. Two transcript variants encoding different isoforms have been found for this gene. [provided by RefSeq, Dec 2011]</p>

Product images:



Circular map for RG206480