

Product datasheet for **RG206428**

CPNE7 (NM_153636) Human Tagged ORF Clone

Product data:

Product Type:	Expression Plasmids
Product Name:	CPNE7 (NM_153636) Human Tagged ORF Clone
Tag:	TurboGFP
Symbol:	CPNE7
Mammalian Cell Selection:	Neomycin
Vector:	pCMV6-AC-GFP (PS100010)
E. coli Selection:	Ampicillin (100 ug/mL)



[View online »](#)

ORF Nucleotide Sequence:

>RG206428 representing NM_153636
 Red=Cloning site Blue=ORF Green=Tags(s)

TTTTGTAATACGACTCACTATAGGGCGGCCGGAATTCGTCGACTGGATCCGGTACCGAGGAGATCTGCC
 GCC**GCGATCGCC**

ATGAGCGCGGGCTCGGAGCGGGGCGGGCAACCCCGGGGTTTGCCTCGCCCTGCGCCTCGAAGG
 TGGAGCTGCGGCTCAGCTGCCGGCACCTGCTGGACCGCGACCCGCTCACCAAGTCCGACCCAGCGTGGC
 GTTGCTGCAGCAGGCGCAGGGCCAGTGGGTGCAGGTGGGAGGAGTGGTCCGGAGCAGCCTGCAT
 CCCGTGTTCTCCAAGGTCTTACGGTGGACTACTTTCGAGGAGGTGCAGAGGCTGCGCTTTGAGGTGT
 ACGACACGCATGGGCCAGCGGCTTTCAGCTGTCAGGAGGACGATTTCTGGGGGGCATGGAGTGCACCT
 GGGGCAGATTGTGGCCAGAAGAAGGTGACCCGCCGCTGCTGCTCAAGTTTGGCAGGAACGCTGGCAAG
 TCCACCATCACGGTATCGCCGAGGACATCTCGGGGAACAACGGTACGTGGAGCTCTCCTCCGGGCCA
 GGAAGCTGGACGACAAGGACCTTTCAGCAAGTCCGACCCCTTCTGGAGCTCTACAGGGTCAACGACGA
 CCAGGGCTTGCAGCTGGTGTACAGGACGGAGGTGTAAGAACAACCTGAACCCGGTGTGGGAGGCCTTC
 AAAGTCTCTGAGTTCCCTCTGACGCTGCGAGGAGACAAGGCCTCTAAAGTGCCTGGTCTGGGATTACG
 ACTCTCGAGGAAAGCAGACTTCATCGGAGAATTCTCTACCACCTTCGAGGAGATGCAGAAGGCCTTTGA
 GGAGGGCAGGCCAGTGGGACTGTGTGAACCCAAATACAAGCAGAAGAGACGCAGTTATAAGAACTCA
 GGAGTGGTTCGCTGGCTGACCTCAAGTCCACAGGGTGTACTCCTTCTGGACTATATCATGGGCGGCT
 GCCAGATCCACTTCACCGTGGCCATTGACTTCACCGCCTCCAATGGAGACCCGCGGAACAGCTGCTCCCT
 GCACTACATCAACCCCTACCAGCCGAACGAGTACCTGAAGGCACTGGTGTCCGTGGGCGAGATCTGCCAG
 GACTATGACAGTGACAAGAGGTTTTCCGCTTTGGGTTTGGAGCCCGGATCCCTCCCAAGTATGAGGTGT
 CCCATGACTTTGCCATCAATTTCAACCTGAGGACGATGAGTGTGAAGGCATCCAGGGCGTGGTGGAGGC
 CTACCAGAACTGCCTGCCAGGGTCCAGCTCTACGGCCCCACCAACGTGGCGCCCATCATCTCAAGGTG
 GCACGCGTGGCGGCGCCGAGGAGACACCGGAAAGCCTCTCAATACTACATCCTGCTGATCCTGACGG
 ACGGCGTGGTACCGACATGGCCGACACACGGGAGGCCATTGTGCGTGCCTCACGCCTGCCCATGTCCAT
 CATCATCGTGGGCGTGGGCAACGCCGACTTCACCGACATGCAGGTCTGGACGGCGACGACGGCGTCTCG
 CGCTCCCCACGGGCTGAGCCCGCTCCGGGACATCGTACAGTTCGTGCCCTTCCGGGAGCTCAAGAACG
 CATCCCCTGCGGCGTGGCCAAGTGCCTGCTGGCCGAGGTCCCGAAGCAGGTGGTGGAGTACTACAGCCA
 CAGAGGCTGCCCCGAGAAGCCTGGGCGTCCCTGCCGGAGAGGCCAGCCAGGCTGCACACCG

AG**CGGACCG**ACGCGTACGCGGCCGCTCGAG - GFP Tag - GTTTAA

Protein Sequence:

>RG206428 representing NM_153636
 Red=Cloning site Green=Tags(s)

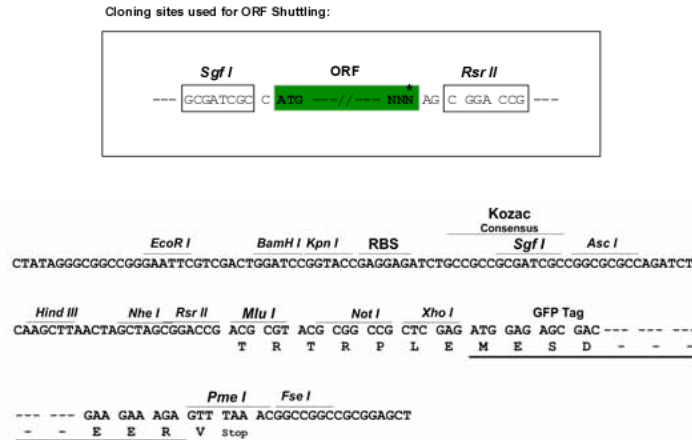
MSAGSERGAAATPGGLPAPCASKVELRLSCRHLLDRDPLTKSDPSVALLQQAQQQWVQVGRTEVVRSSLH
 PVFSKVFVTDYDFEEVQRLRFVYDTHGSPSGFSCQEDDFLGGMECTLGQIQAQKQVTRPLLLKFRNAGK
 STITVIAEDISGNNGYVELSFRARKLDDKDLFSKSDPFLELYRVNDDQGLQLVYRTEVVKNNLNPNVWEAF
 KVSLSLCSCEETRPLKCLVWDYDSRGKHDFIGEFSTTFEEMQKAFEEGQAQWDCVNPYKQKRRSYKNS
 GVVVLADLKFHRVYSFLDYIMGGCQIHFTVAIDFTASNGDPRNCSLHYINPYQPNEYLKALVSVGEICQ
 DYDSDKRFSALGFGARIPPKYEVSHDFAINFNPEDECEGIQGVVEAYQNCLPRVQLYGPNTVAPIISKV
 ARVAAAEESTGKASQYYILLILDGVVTDMDTREAIVRASRLPMSIIIVGVGNADFTDMQVLDGDDGVL
 RSPRGPALRDIQVFPFRELKNASPAALAKCVLAEVPKQVVEYYSHRGLPPRSLGVPAGEASPGCTP

SGP**TRRRLE** - GFP Tag - V

Restriction Sites:

Sgfl-RsrII

Cloning Scheme:



ACCN: NM_153636

ORF Size: 1674 bp

OTI Disclaimer: The molecular sequence of this clone aligns with the gene accession number as a point of reference only. However, individual transcript sequences of the same gene can differ through naturally occurring variations (e.g. polymorphisms), each with its own valid existence. This clone is substantially in agreement with the reference, but a complete review of all prevailing variants is recommended prior to use. [More info](#)

OTI Annotation: This clone was engineered to express the complete ORF with an expression tag. Expression varies depending on the nature of the gene.

Components: The ORF clone is ion-exchange column purified and shipped in a 2D barcoded Matrix tube containing 10ug of transfection-ready, dried plasmid DNA (reconstitute with 100 ul of water).

Reconstitution Method:

1. Centrifuge at 5,000xg for 5min.
2. Carefully open the tube and add 100ul of sterile water to dissolve the DNA.
3. Close the tube and incubate for 10 minutes at room temperature.
4. Briefly vortex the tube and then do a quick spin (less than 5000xg) to concentrate the liquid at the bottom.
5. Store the suspended plasmid at -20°C. The DNA is stable for at least one year from date of shipping when stored at -20°C.

RefSeq: [NM_153636.1](#), [NP_705900.1](#)

RefSeq Size: 2470 bp

RefSeq ORF: 1677 bp

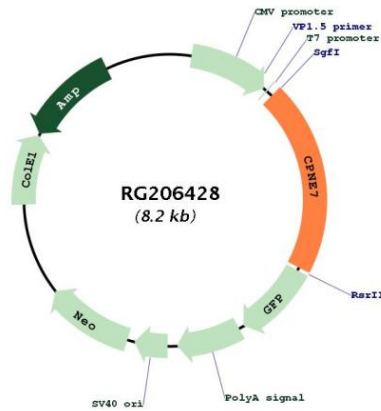
Locus ID: 27132

UniProt ID: [Q9UBL6](#)

Cytogenetics: 16q24.3

Gene Summary: This gene encodes a member of the copine family, which is composed of calcium-dependent membrane-binding proteins. The gene product contains two N-terminal C2 domains and one von Willebrand factor A domain. The encoded protein may be involved in membrane trafficking. Two alternatively spliced transcript variants encoding different isoforms have been found for this gene. [provided by RefSeq, Nov 2008]

Product images:



Circular map for RG206428