

## Product datasheet for **RG206418**

### RERGL (NM\_024730) Human Tagged ORF Clone

#### Product data:

Product Type: Expression Plasmids  
Product Name: RERGL (NM\_024730) Human Tagged ORF Clone  
Tag: TurboGFP  
Symbol: RERGL  
Mammalian Cell Selection: Neomycin  
Vector: pCMV6-AC-GFP (PS100010)  
E. coli Selection: Ampicillin (100 ug/mL)  
ORF Nucleotide Sequence: >RG206418 representing NM\_024730  
Red=Cloning site Blue=ORF Green=Tags(s)

TTTTGTAATACGACTCACTATAGGGCGGCCGGAATTCGTCGACTGGATCCGGTACCGAGGAGATCTGCC  
GCC**CGATCGCC**

ATGTCAAACCTTCTGCATCTCAAATATAATGAGAAATCTGTTTCTGTTACAAAAGCCCTTACAGTGAGGT  
TTCTTACTAAGCGATTCATTGGAGAATATGCTTCTAATTTGAATCTATCTATAAGAAGCACTTGTGTTT  
GGAAAGGAAACAATAAATCTAGAAATATGACCCTTGTCTCAAACACAGAAAGCAAAATTCCTCCCTC  
ACAAGTGAGCTTCACTGGGCAGATGGGTTTGTATTGTGTATGACATCAGTGATAGGTCTTCATTTGCTT  
TTGCAAAAAGCGCTGATCTACAGAATCCGGGAGCCACAACTAGTCATTGTAAAAGAGCTGTGGAATCAGC  
AGTGTTTTTGGTTGGCAACAAACGAGATCTTTGTATGTGCGAGAGGTTGGCTGGGAAAGAAGGGCAAAAG  
CTGGCACTGGAACCGATGCCAATTCTGTGAACTGTCTGCAGCAGAGCAGTCTCTGGAGGTGGAATGA  
TGTTTATCAGAATTATCAAGGACATCCTGATAAACTTCAAACCTCAAAGAAAAGAGACGTCCAGTGGATC  
TAAATCAATGGCCAAATGATCAATAATGTATTTGAAAGAGAAGGAAATCTGTT

**ACGCGT**ACGCGGCCGCTCGAG - GFP Tag - GTTTAA

Protein Sequence: >RG206418 representing NM\_024730  
Red=Cloning site Green=Tags(s)

MSNFLHLKYNEKSVSVTKALTVRFLTKRFIGEYASNFESIYKKHLCLERKQLNLEIYDPCSQTQKAKFSL  
TSELHWADGFVIVYDISDRSSFAFAKALIYRIREPQTSCHKRAVESAVFLVGNKRDLCHVREVGWEEGQK  
LALENRCQFCELSAAEQSLEVEMMFIRI IKDILINFKLKEKRRPSGSKSMAKLINNVFGKRRKSV

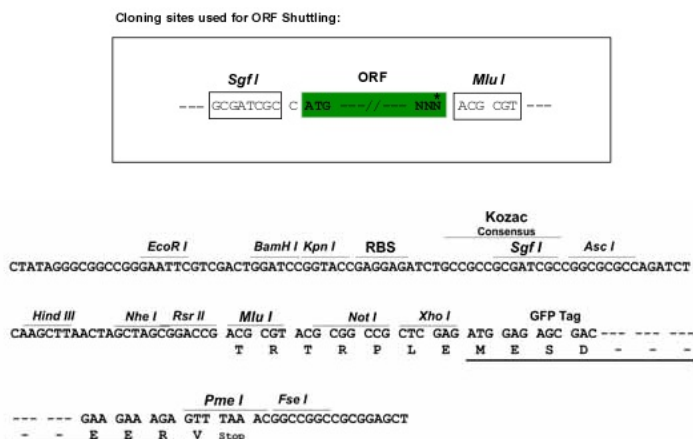
**TRTRPLE** - GFP Tag - V

Restriction Sites: SgfI-MluI



[View online »](#)

## Cloning Scheme:



ACCN: NM\_024730

ORF Size: 615 bp

OTI Disclaimer: The molecular sequence of this clone aligns with the gene accession number as a point of reference only. However, individual transcript sequences of the same gene can differ through naturally occurring variations (e.g. polymorphisms), each with its own valid existence. This clone is substantially in agreement with the reference, but a complete review of all prevailing variants is recommended prior to use. [More info](#)

OTI Annotation: This clone was engineered to express the complete ORF with an expression tag. Expression varies depending on the nature of the gene.

Components: The ORF clone is ion-exchange column purified and shipped in a 2D barcoded Matrix tube containing 10ug of transfection-ready, dried plasmid DNA (reconstitute with 100 ul of water).

Reconstitution Method:

1. Centrifuge at 5,000xg for 5min.
2. Carefully open the tube and add 100ul of sterile water to dissolve the DNA.
3. Close the tube and incubate for 10 minutes at room temperature.
4. Briefly vortex the tube and then do a quick spin (less than 5000xg) to concentrate the liquid at the bottom.
5. Store the suspended plasmid at -20°C. The DNA is stable for at least one year from date of shipping when stored at -20°C.

Note: Plasmids are not sterile. For experiments where strict sterility is required, filtration with 0.22um filter is required.

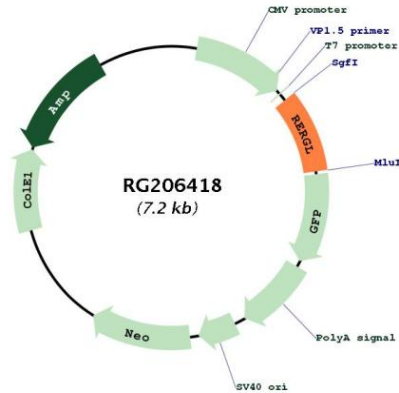
RefSeq: [NM\\_024730.3](#)

RefSeq Size: 1182 bp

RefSeq ORF: 618 bp

Locus ID: 79785  
 UniProt ID: [Q9H628](#)  
 Cytogenetics: 12p12.3  
 Gene Summary: Binds GDP/GTP and may possess intrinsic GTPase activity.[UniProtKB/Swiss-Prot Function]

**Product images:**



Circular map for RG206418