

Product datasheet for **RG206413**

ZNF671 (NM_024833) Human Tagged ORF Clone

Product data:

Product Type:	Expression Plasmids
Product Name:	ZNF671 (NM_024833) Human Tagged ORF Clone
Tag:	TurboGFP
Symbol:	ZNF671
Mammalian Cell Selection:	Neomycin
Vector:	pCMV6-AC-GFP (PS100010)
E. coli Selection:	Ampicillin (100 ug/mL)



[View online »](#)

ORF Nucleotide Sequence:

>RG206413 representing NM_024833
 Red=Cloning site Blue=ORF Green=Tags(s)

TTTTGTAATACGACTCACTATAGGGCGGCCGGAATTCGTCGACTGGATCCGGTACCGAGGAGATCTGCC
 GCC**CGGATCGCC**

ATGTTGTCCCCAGTGTCCCAGACGCGTCTGATGCTCTGCAGGGACGGAAGTGCCTGCGTCCCCGATCGA
 GAGCCTGCCGCTCCCGCAGCTGTCCGCGCCACGGTCTATGGCGGAGCTAACGGACTCCGCGCGGGG
 CTGTGTGGTCTTTGAGGATGTGTTGTATACTTCTCTCGGAAGAATGGGAGCTTCTTGATGATGCTCAG
 AGACTTTTGTACCATGATGTGATGCTGGAGAAGTTGCACTTTTACCTCACTGGGAATTGCATTTTCCA
 GATCACGTGCAGTCATGAACTAGAGCGAGGAGAAGAGCCCTGGGTGATGACCAGGTGGATATGACTTC
 AGCCACAGAAAGAGAGGCCAGAGGGGACTTAGACCTGGTTGTTGGCATGGAGTGGAGGATGAAGAGGTA
 TCTTCTGAGCAGAGCATTGTTGAGCAGGAGTGTGAGGTCAGGACTCTCATGGCAGAGCTGGAGTCTC
 ACCCATGTGACATATGTGGCCCAATATTGAAAGATACCTTACACCTGGCTAAATACCATGGGGGAAAAGC
 CAGGCAGAAACCATACTGTGTGGGCATGTGGAAGCAATTCTGGTTCAGTACAGACTTTGACCAGCAC
 CAGAACCAGCCCAATGGAGGGAAACTTTCCCAAGGAAGGAGGGCAGAGACTCTGTGAAAAGCTGCAGAG
 TCCATGTGCCAGAGAAGACCCTCACATGTGGAAAGGTAGGAGAGACTTTTCAGCCACATCTGGCCTTCT
 TCAGCATCAGGCCTCTCTCAGCAGCATGAAGCCCCACAAGAGCACTAAGCTTGTGAGTGGCTTTCTCATG
 GGACAGAGGATCACAGGTGTGGTGAATGTGGGAAAGCCTTACCCGCAAAGACACACTTGTCTGGCAGC
 AGAGAATCCACACTGGAGAAAGGCCTTATGAGTGAACGAATGTGGGAAATTTCTCAGCCAAAGCTATGA
 CCTTTTAAACACCAGACAGTTTACACTGGAGAAAGGCCATACGAGTGCAGCGAATGTGGGAAATTTCTT
 AGACAAATCTCCGGCCTGATTGAGCACAGGCGAGTTCACACGGGTGAAAGACTCTATCAGTGTGGCAAT
 GTGGGAAATTTTTAGCAGTAAGTCTAATCTCATTTCACACCAGGAAGTTCACACAGGAGCCAGGCTTA
 TGTATGCAGCGAATGTGGGAAAGAGTTCAGTCGGAACACACACTTGTCTGCACCAACGAACACTCACAT
 GGAGAAAGGCCTTATGAGTGCAGTGAATGTGGGAAAGCCTTTAGCCAAAGCTCCACCTTATGTACT
 GGAGAATTCACAGCAGTATTATGAGTGTAGCAGATGTGGTAAAGCTTTTCTCAGCTGCATCTCCAAACTCAT
 TCAGCACCAGAAAGTTCCTCTGGAGAAAAGCCTTATGAGTGCAGCAAGTGCAGGAAAGCCTTCACTCAA
 AGACCCAACTCATCAGGCACTGGAAAGTCCACACTGGGAAAGGCCTTATGTGTGATGAGTGCAGGGA
 GAGAATTCATCCGAAACAGACACTTGTCTGCACCAGAGGTTTATGCTGGAGAAAAGCTTAAAGAGTGT
 AGCAAATGTGGGGAAAGCTTAGGCCAATGCCCTGACTTACTATATGGTGGGGAAC

AG**CGGACCG**ACGCGTACGCGGCCGCTCGAG - GFP Tag - GTTTAA

Protein Sequence:

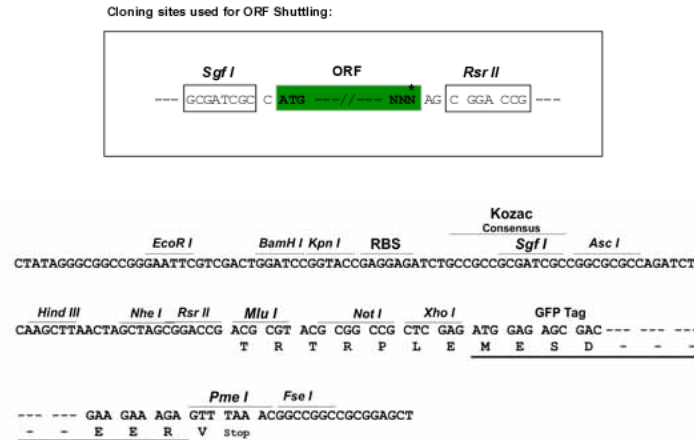
>RG206413 representing NM_024833
 Red=Cloning site Green=Tags(s)

MLSPVSRDASDALQGRKCLRPRSRRLPLPAAVRAHGPMaelTDSARGCVVFEDVFVYFSREEWELDDAQ
 RLLYHDVMLENFALLASLGIAFSRRAVMKLERGEEPWVYDQVDMTSATEREAQRGLRPGCWGVEDEEV
 SSEQSIFVAGVSEVRTLMAELESHPCDICGPILKDTLHLAKYHGKARQKPYLCGACGKQFWFSTDFDQH
 QNQPNNGKLFPRKEGRDSVKSCRHVHPEKTLTCGKGRDFSATSGLLQHQLSSMKPHKSTKLVSGLFM
 GQRYHRCGECGKAFTRKDTLARHQRIHTGERPYECNECGKFFSQSYDLFKHQTVHTGERPYECSECGKFF
 RQISGLIEHRRVHTGERLYQCGKCGKFFSSKSNLIRHQEVHTGARPYVCSECGKEFSRKHTLVLHQRTHT
 GERPYECSECGKAFSSSHLNVHWHRIHSSDYECRCGKAFSCISKLIQHVKVHSGEKPYECSKCGKAFQTQ
 RPNLIRHWKVHTGERPYVCSEGREFIRKQTLVLHQRVHAGEKLSVANVGESLRPMPLTYMVG

SGP**TRRRLE** - GFP Tag - V

Restriction Sites:

Sgfl-RsrII

Cloning Scheme:


ACCN: NM_024833

ORF Size: 1668 bp

OTI Disclaimer: The molecular sequence of this clone aligns with the gene accession number as a point of reference only. However, individual transcript sequences of the same gene can differ through naturally occurring variations (e.g. polymorphisms), each with its own valid existence. This clone is substantially in agreement with the reference, but a complete review of all prevailing variants is recommended prior to use. [More info](#)

OTI Annotation: This clone was engineered to express the complete ORF with an expression tag. Expression varies depending on the nature of the gene.

Components: The ORF clone is ion-exchange column purified and shipped in a 2D barcoded Matrix tube containing 10ug of transfection-ready, dried plasmid DNA (reconstitute with 100 ul of water).

Reconstitution Method:

1. Centrifuge at 5,000xg for 5min.
2. Carefully open the tube and add 100ul of sterile water to dissolve the DNA.
3. Close the tube and incubate for 10 minutes at room temperature.
4. Briefly vortex the tube and then do a quick spin (less than 5000xg) to concentrate the liquid at the bottom.
5. Store the suspended plasmid at -20°C. The DNA is stable for at least one year from date of shipping when stored at -20°C.

RefSeq: [NM_024833.1](#), [NP_079109.1](#)

RefSeq Size: 2439 bp

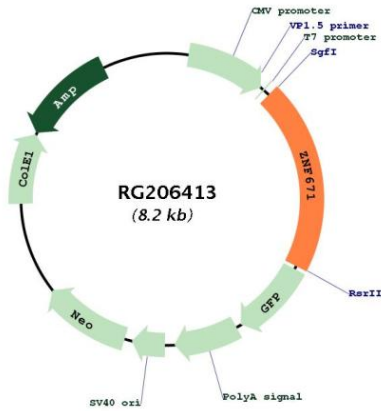
RefSeq ORF: 1605 bp

Locus ID: 79891

UniProt ID: [Q8TAW3](#)

Cytogenetics: 19q13.43
Domains: KRAB, zf-C2H2
Protein Families: Transcription Factors
Gene Summary: May be involved in transcriptional regulation.[UniProtKB/Swiss-Prot Function]

Product images:



Circular map for RG206413