

Product datasheet for **RG206407**

GMEB2 (NM_012384) Human Tagged ORF Clone

Product data:

Product Type:	Expression Plasmids
Product Name:	GMEB2 (NM_012384) Human Tagged ORF Clone
Tag:	TurboGFP
Symbol:	GMEB2
Synonyms:	GMEB-2; P79PIF; PIF79
Mammalian Cell Selection:	Neomycin
Vector:	pCMV6-AC-GFP (PS100010)
E. coli Selection:	Ampicillin (100 ug/mL)



[View online »](#)

ORF Nucleotide Sequence:

>RG206407 representing NM_012384
 Red=Cloning site Blue=ORF Green=Tags(s)

TTTTGTAATACGACTCACTATAGGGCGGCCGGAATTCGTCGACTGGATCCGGTACCGAGGAGATCTGCC
 GCC**CGGATCGCC**

ATGGCGACTCCCACGTGAGTGTGCACATGGAGGAGTGGTGGTTGTGACAACTCCGGACACTGCAGTGG
 ACGGCAGTGGTGTGGAGGGGTGAAGACCGTGTGGTGCAGACCAACTTGGCCCCACGGGGGCGACCT
 GACGGAAGATAACATGGAGACAGAAAATGCAGCGCGGCAGCTGCCGCGCCTTACAGCCTCCTCCAG
 CTAAGGAAGCCGTGTTAGTGAAGATGGCTGAAGAGGGGAGAACCTGGAAGCTGAGATTGTGTACCCCA
 TCACCTGTGGAGACAGCAGACCAACCTCATCTGGAGGAAGTTTGTGTGCCCGCATCAATGTAAATG
 TGTTCACTACGACGAGCATGTAATCAGCCCAAAGGAATTTGTGCACCTGGCCGGGAAGTCCACCCTGAAG
 GACTGGAAGAGAGCCATCCGCATGAACGGCATCATGCTCAGGAAGATCATGGACTCCGGGAACTGGACT
 TCTACCAGCAGACAAGGTCTGCTCCAACACCTGCCGAGCACAAGATTGACCTCTCAGGAGCCCGTGT
 GTCCTGAGCAGCCCACGTCCGCGAGTACATCCCCTCAGCCCGCCGAGCCGACGTGAATGGGTCT
 CCTTGCACCATACCATAGAGACCTGTGAAGACCTGGCGACTGGACCGCGCCATTGGAGATGACACAT
 TTACCTTCTGGCGGGGCTGAAGGACGCCGGCCTGCTGGACGAGGTATCCAGGAGTCCACCAGGAGCT
 GGTGGAGACCATGAGAGGCTGCAGCAGCGGTCCAGGACCTCCCCTGCAGTTCGAGATGCTGTACTT
 CTCAACAACATCGTGCAGAACTTCGGCATGCTGGACCTGGTGAAGAAGGTGCTGGCCAGCCACAAGTGCC
 AGATGGACCGCTCGCGGGAGCAGTACGCCCGGGACCTGGCAGCCCTGGAGCAGCAGTGTGATGAGCATCG
 TCGCCGAGCCAAGGAGCTGAAGCACAAGTCCCAGCACCTCAGCAACGTGCTCATGACGCTGACGCCGGTC
 TCCCTGCCACCGCCTGTGAAGCGGCCCGGCTTGACGTGCCACATCAGGACCGCCGCCATGGCCTGCC
 AGGTGCTCACCCAGTCTGCCAGCTGGCGCTTGCCCGGGCGTCCCGCCAGCTCAGCAGCCCGCCGCTGCC
 CCTTGGTAAAGTGGTGTCCACCCTGCCCTCCACGTCTGGGCAAGGGTTCCTTTCAGGCGCCCGCCG
 AGCTCCCCGGCCTCCCCGCTGCTCGGGGATACACAGTCTTGGCCTTTCGGCTCCACCTACCCAGCA
 CAGTGGAGATCCACCCGGACGCTCCAGCCTCACGGTCTGAGCAGGCCGCCGTGCAGGACGGTAGCAC
 GGTGTTCAAGGTGGTCCAGCCGCTGCAGCTGCTCACGTTGCCTGGCCTGGGCCCCACCCTGCAGAACGTG
 GCCCAGGCTCGCTGGCTCCAGCACAATTGTGACAGTGCCCGCAGGGGCTGCCCGGGCTGAGGAGC
 ACACGGCCACCATTGAGTGGCTGCCATGGCAGAGGACCACGAGCGGAAG

AG**CGGACCG**ACGCGTACGCGGCCGCTCGAG – GFP Tag – GTTAA

Protein Sequence:

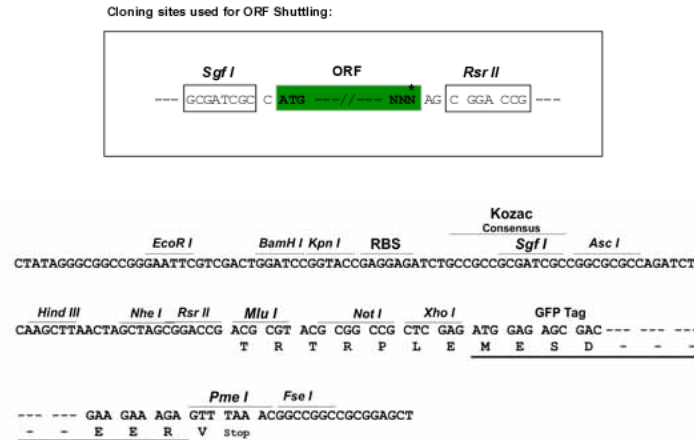
>RG206407 representing NM_012384
 Red=Cloning site Green=Tags(s)

MATPDVSVHMEEVVVVVTPDTAVDGSVGEVKTIVLVTNLAHPGGDLTEDNMETENAAAAAAFTASSQ
 LKEAVLVKMAEEGENLEAEIVYPITCGDSRANLIWRKFVCPGINVKCVQYDEHVISPKFVHLAGKSTLK
 DWKRAIRMNGIMLRKIMDSGELDFYQHDKVCNTRCRSTKIDLSGARVSLSSPTSAEYIPLTPAAADVNGS
 PATITITCEDPGDWTAAGDDFTFWRGLKDAGLLDEVIQEFHQELVETMRGLQQRVQDPPPLQLRDAVL
 LNNIVQNFGLDLVKKVLASHKQMDRSREQYARDLAALQCCDEHRRRAKELKHKSQLSNVMTLTPV
 SLPPPVKRPRLARATSGPAAMASQVLTQSAQLALGPGVPVPQLTSVPLGKVVSTLPSTVLGKGSQAPPA
 SSPASPLLGGYTVLASSGSTYPSTVEIHPDASSLTVLSTAAVQDGSVFKVVSPLQLLTLPLGPTLQNV
 AQASPGSSTIVTPAGAAPGPEEHTATIEVAAMAEDHERK

SGP**TRRRLE** – GFP Tag – V

Restriction Sites:

Sgfl-RsrII

Cloning Scheme:


ACCN: NM_012384

ORF Size: 1590 bp

OTI Disclaimer: The molecular sequence of this clone aligns with the gene accession number as a point of reference only. However, individual transcript sequences of the same gene can differ through naturally occurring variations (e.g. polymorphisms), each with its own valid existence. This clone is substantially in agreement with the reference, but a complete review of all prevailing variants is recommended prior to use. [More info](#)

OTI Annotation: This clone was engineered to express the complete ORF with an expression tag. Expression varies depending on the nature of the gene.

Components: The ORF clone is ion-exchange column purified and shipped in a 2D barcoded Matrix tube containing 10ug of transfection-ready, dried plasmid DNA (reconstitute with 100 ul of water).

Reconstitution Method:

1. Centrifuge at 5,000xg for 5min.
2. Carefully open the tube and add 100ul of sterile water to dissolve the DNA.
3. Close the tube and incubate for 10 minutes at room temperature.
4. Briefly vortex the tube and then do a quick spin (less than 5000xg) to concentrate the liquid at the bottom.
5. Store the suspended plasmid at -20°C. The DNA is stable for at least one year from date of shipping when stored at -20°C.

Note: Plasmids are not sterile. For experiments where strict sterility is required, filtration with 0.22um filter is required.

RefSeq: [NM_012384.2](#), [NP_036516.1](#)

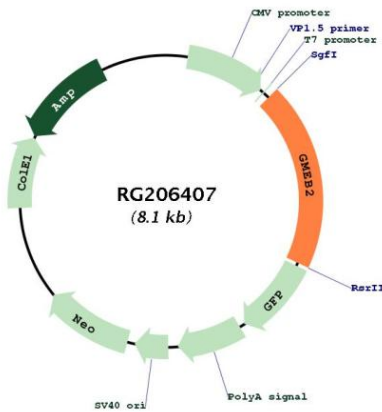
RefSeq Size: 4559 bp

RefSeq ORF: 1593 bp

Locus ID: 26205

UniProt ID: [Q9UKD1](#)
Cytogenetics: 20q13.33
Domains: SAND
Protein Families: Druggable Genome, Transcription Factors
Gene Summary: This gene is a member of KDWK gene family. The product of this gene associates with GMEB1 protein, and the complex is essential for parvovirus DNA replication. Study of rat homolog implicates the role of this gene in modulation of transactivation by the glucocorticoid receptor bound to glucocorticoid response elements. This gene appears to use multiple polyadenylation sites. [provided by RefSeq, Jul 2008]

Product images:



Circular map for RG206407