

## Product datasheet for **RG206384**

### SPPL2A (NM\_032802) Human Tagged ORF Clone

#### Product data:

Product Type:	Expression Plasmids
Product Name:	SPPL2A (NM_032802) Human Tagged ORF Clone
Tag:	TurboGFP
Symbol:	SPPL2A
Synonyms:	IMP3; PSL2
Mammalian Cell Selection:	Neomycin
Vector:	pCMV6-AC-GFP (PS100010)
E. coli Selection:	Ampicillin (100 ug/mL)



[View online »](#)

**ORF Nucleotide Sequence:**

>RG206384 representing NM\_032802  
 Red=Cloning site Blue=ORF Green=Tags(s)

TTTTGTAATACGACTCACTATAGGGCGGCCGGGAATTCGTCGACTGGATCCGGTACCGAGGAGATCTGCC  
 GCC**CGGATCGCC**

ATGGGGCCGACGCGGCGGCTGTCCCTGCCGGGCGCCCTACTCTGGGGCTTCCTGCTCCAGCTGACAG  
 CCGCTCAGGAAGCAATCTTGCATGCGTCTGAAAATGGCACAACCAAGGACTACTGCATGCTTTATAACCC  
 TTATTGGACAGCTCTTCCAAGTACCCTAGAAAATGCAACTTCCATTAGTTTGATGAATCTGACTTCCACA  
 CCACTATGCAACCTTTCTGATATTCCTCCTGTTGGCATAAAGAGCAAAGCAGTTGTGTTCCATGGGGAA  
 GCTGCCATTTTCTGAAAAAGCCAGAATTGCACAGAAAGGAGGTGCTGAAGCAATGTTAGTTGTCAATAA  
 CAGTGTCTATTTCTCCCTCAGGTAACAGATCTGAATTCCTGATGTGAAAATACTGATTGCATTTATA  
 AGCTACAAAGACTTTAGAGATATGAACCAGACTTAGGAGATAACATTACTGTGAAAATGTATTCTCCAT  
 CGTGGCCTAACTTTGATTATACTATGGTGGTATTTTTGTAATTGCGGTGTTCACTGTGGCATTAGTGG  
 ATACTGGAGTGGACTAGTTGAATTGAAAACCTTGAAGCAGTGACAAGTGAAGATAGAGAAATGAGGAAA  
 AAGAAGGAAGAATATTTAACTTTTAGTCCCTTACAGTTGAATATTTGTGGTCACTCGTGTGTTATGA  
 TGGTCTTACTTTATTTCTTACAAATGGTTGGTTTATGTTATGATAGCAATTTCTGCATAGCATCAGC  
 AATGAGTCTGTACAAGTCTTGTCTGACTAATTCATAAGATACCATATGGACAATGCACGATTGCATGT  
 CGTGGCAAAAACATGGAAGTGAGACTTATTTTTCTCTGGACTGTGCATAGCAGTAGCTGTTGTTGGG  
 CTGTGTTTCGAAATGAAGACAGGTGGGCTTGGATTTACAGGATATCTTGGGGATTGCTTTCTGTCTGAA  
 TTTAATTAACACTGAAGTTGCCCACTTCAAGTCATGTGTGATACTTCTAGGCCTTCTCTCTCTAT  
 GATGATTTTTGTTTTCATAACACCATTCAATCACAAGAATGGTGAGAGTATCATGGTTGAACCTCGCAG  
 CTGGACCTTTTGGAAATAATGAAAAGTTGCCAGTAGTCATCAGAGTACCAAACTGATCTATTTTTCAGT  
 AATGAGTGTGTGCTCATGCCTGTTCAATATTGGGTTTTGGAGACATTATTGTACCAGGCTGTTGATT  
 GCATACTGTAGAAGATTTGATGTTGAGACTGGTCTTCTTACATATACTATGTTTCGTCTACAGTTGCC  
 ATGCTATTGGCATGATACTTACATTTGTTGTTCTGGTGTGATGAAAAGGGGCAACCTGCTCTCTCTA  
 TTTAGTACCTTGCACTTATTACTGCCTCAGTTGTTGCCTGGAGACGTAAGGAAATGAAAAGTTCTGG  
 AAAGGTAACAGCTATCAGATGATGGACCATTGGATTGTGCAACAATGAAGAAAACCTGTGATATCTG  
 GTGAACAGATTGTCCAGCAA

**ACGCGTACGCGGCCGCTCGAG** - GFP Tag - GTTTAA

**Protein Sequence:**

>RG206384 representing NM\_032802  
 Red=Cloning site Green=Tags(s)

MGPQRRRLSPAGAALLWGFLLQLTAAQEAILHASGNGTTKDYCMLYNPYWTALPSTLENATSI SLMNLTST  
 PLCNLSDIPVGIKSKAVVVPWGSCHFLEKARIAQKGGAEAMLVNNNSVLFPPSGNRSEFPDVKILIAFI  
 SYKDFRDMNQTLGDNITVKMYSWPNFDTMVVIFVIAVFTVALGGYWSGLVELENLKAVTTEDREMRK  
 KKEEYLTFSPLTVVIFVVICCVMMVLLYFFYKWL VYVMI AIFCIA SAMS LYNCL AAL I HKIPY GQCTIAC  
 RGKNMEVRLIFLSGLCIAVAVVWAVFRNEDRWAWILQDILGIAFCLNLIKTLKLPNFKSCVILLGLLLY  
 DVFFVFITPFITKNGESIMVELAAGPFGNNEKLPVIRVPKLIYFSVMSVCLMPVSILGFGDIIVPGLLI  
 AYCRRFVQGTGSSYIYVVSSTVAYAI GMILTFVVLVLMKKQPALLYLPCTLITASVVAWRKEMKFW  
 KGNSYQMMDHLCATNEENPVISGEQIVQQ

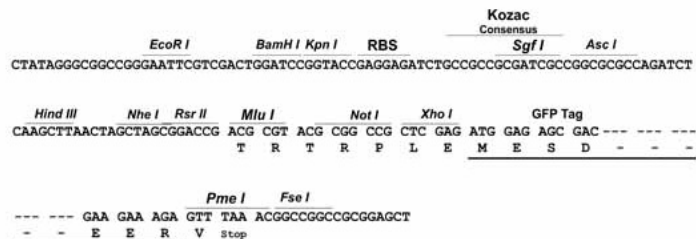
**TRTRPLE** - GFP Tag - V

**Restriction Sites:**

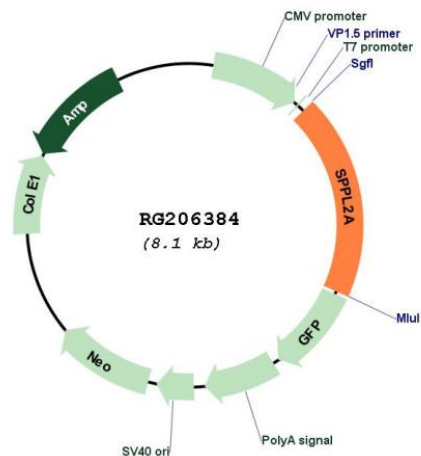
Sgfl-Mlul

Cloning Scheme:

Cloning sites used for ORF Shutting:



Plasmid Map:



<b>ACCN:</b>	NM_032802
<b>ORF Size:</b>	1560 bp
<b>OTI Disclaimer:</b>	The molecular sequence of this clone aligns with the gene accession number as a point of reference only. However, individual transcript sequences of the same gene can differ through naturally occurring variations (e.g. polymorphisms), each with its own valid existence. This clone is substantially in agreement with the reference, but a complete review of all prevailing variants is recommended prior to use. <a href="#">More info</a>
<b>OTI Annotation:</b>	This clone was engineered to express the complete ORF with an expression tag. Expression varies depending on the nature of the gene.
<b>Components:</b>	The ORF clone is ion-exchange column purified and shipped in a 2D barcoded Matrix tube containing 10ug of transfection-ready, dried plasmid DNA (reconstitute with 100 ul of water).
<b>Reconstitution Method:</b>	<ol style="list-style-type: none"><li>1. Centrifuge at 5,000xg for 5min.</li><li>2. Carefully open the tube and add 100ul of sterile water to dissolve the DNA.</li><li>3. Close the tube and incubate for 10 minutes at room temperature.</li><li>4. Briefly vortex the tube and then do a quick spin (less than 5000xg) to concentrate the liquid at the bottom.</li><li>5. Store the suspended plasmid at -20°C. The DNA is stable for at least one year from date of shipping when stored at -20°C.</li></ol>
<b>RefSeq:</b>	<a href="#">NM_032802.4</a>
<b>RefSeq Size:</b>	2010 bp
<b>RefSeq ORF:</b>	1563 bp
<b>Locus ID:</b>	84888
<b>UniProt ID:</b>	<a href="#">Q8TCT8</a>
<b>Cytogenetics:</b>	15q21.2
<b>Domains:</b>	PA, PSN, DUF435
<b>Protein Families:</b>	Protease, Transmembrane
<b>Gene Summary:</b>	This gene encodes a member of the GXGD family of aspartic proteases, which are transmembrane proteins with two conserved catalytic motifs localized within the membrane-spanning regions, as well as a member of the signal peptide peptidase-like protease (SPPL) family. This protein is expressed in all major adult human tissues and localizes to late endosomal compartments and lysosomal membranes. A pseudogene of this gene also lies on chromosome 15. [provided by RefSeq, Feb 2012]