

Product datasheet for **RG206383**

ZNF417 (NM_152475) Human Tagged ORF Clone

Product data:

Product Type:	Expression Plasmids
Product Name:	ZNF417 (NM_152475) Human Tagged ORF Clone
Tag:	TurboGFP
Symbol:	ZNF417
Mammalian Cell Selection:	Neomycin
Vector:	pCMV6-AC-GFP (PS100010)
E. coli Selection:	Ampicillin (100 ug/mL)



[View online »](#)

ORF Nucleotide Sequence:

>RG206383 ORF sequence, **codon optimized**.
Due to the complexity of NM_152475, the ORF clone is codon optimized for mammalian Expression.
The nucleotide sequence differs from the reference sequence, yet the amino acid sequence remains identical.

Red=Cloning site Blue=ORF Green=Tags(s)

TTTTGTAATACGACTCACTATAGGGCGGCCGGAATTCGTCGACTGGATCCGGTACCGAGGAGATCTGCC
 GCC**CGATCGCC**

ATGGCAGCCGCGGCCCAAGGAGGCCAACACAACAAGGAACAGTGACCTTTGAAGATGTGGCGGTGAATT
 TTTCTCAAGAGGAATGGTGCCTGCTCAGCGAAGCTCAACGGTGCCTCTATAGGGACGTATGCTTGAGAA
 TCTGGCTTTGATCAGCAGTTTGGGGTGTGGTGTGGCAGCAAGGACGAGGAGGCCCTTGAAGCAGCGG
 ATTTCAAGTTCAGCGAGAAAGTCAAGCCGACACCAAGGGCTGGGGTGAAGCCAAAGAAAGCGCACCCAT
 GCGAGATGTGGTCTGATACTGGAGGATGTGTTCCATTTTGTGACCACCAAGAGACACACCACAAGCA
 GAAACTGAATAGATCTGGGGCTTGCAGAAAGAATCTTGACGACACAGCATATCTTACCAACATCAGAAG
 CAACATATAGGAGAGAAGTTTTACCGCAAGTCCGTGCGGGAAGCTAGCTTCGTTAAGAAAAGGAAGTTGA
 GAGTGTACAGGAACCTTTGTTTTCCGGGAATTTGAAAGGACGTCCTCCCAAGCAGCGGACTCTGCCA
 GGAAGCCGCTGCAGTGGAGAAAACCGACTCTGAGACTATGCACGGACCTCCATTCAGGAAGGCAAGACC
 AATTACTCTTGCAGGAAAGCGGACCAAGGCCTTAGCACTAAGCATAGCGTTATCCCCACCAGAAACTGT
 TTACCAGGACGGATGTTACGTGTGTAGTATTGCGGCAAGTCTTTTTCTCGGTATGTCCTTCTCTAA
 CCACCAGAGAGATCACACTGCTAAGGGTCCTTAGACTGTGGCGAATGTGGCAAATCTTACAGTCGCAAG
 TCTAGTCTTATCCAGCACCGAGTGCATACAGGAAAGACAGCTTACCCATGTGAGGAGTGCAGCAAAA
 GTTTTTACAGAAAGGATCCTTGATCTCACATCAACGGGTTACACCGGGCAGCGCCCATACGAATGTAG
 GGAGTACGGCAAGTCTTCGCGCCAGAAAGGGAATCTCATACAGCATCAGCAGGGTCATACCGCGAGAGG
 GCATACCACTGTGGTGTGGTGTGGAAAGTCAATCAGGCAAAAGTTCTGCTTCATTAACCATCAGCGCGTCC
 ATACCGGTGAAAGACCGTACAAGTGCAGGGAATGTGGGAAGTCTTTGGACAGAAAGGTAACCTCGTGCA
 ACACCAGCGGGTACACCGGAGAGCGACCATACGAATGTAAGGAGTGCAGGTAAGAGTTTTAGATATAGA
 TCTCACCTTACCGAGCATCAGAGGCTGCATACAGGTGAGAGGCCATATAATTGCAGAGAGTGCAGCAAT
 TGTTTAACCGGAAGTACCACTTGTGTTGCACGAACGGGTACATACGGGTGAGCGCCCATATGCCTGTGA
 GGTTCGCGAAAGCTTTTCGGAACAAAATTGCGTGACCATCCACCAGAGGATACACACAGGAGAGAGG
 CCGTACGAGTGAATGAATGCGGCAAGTCAATTTCTGTCCTCTTCCGCTCTGCACGTCCATAAACGGGTGC
 ACAGTGGTCAGAAAGCCGTATAAATGCTCCGAGTGCAGGCAATCATTTGCTGAGTGTAGCTCTCTGATCAA
 GCACAGACGATTCACTGGGGAACGCCCTATGAGTGCCTAAATGTGGTAAGACATTTACAGCGGTCC
 TCAACACTTCTGCATCACCAGTCCAGCCACCGGAGAAAGGCGCTG

ACGCGTACGCGGCCGCTCGAG - GFP Tag - GTTTAA

Protein Sequence: >RG206383 representing NM_152475
 Red=Cloning site Green=Tags(s)

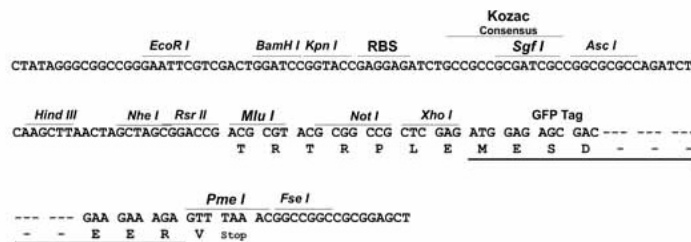
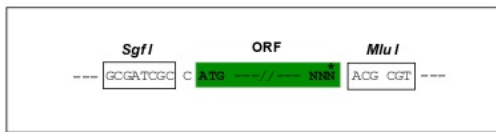
MAAAAPRRPTQQGTVTTFEDVAVNFSQEEWCLLSEAQRCLYRDVMLENLALISSLGWCWGSKDDEEAPCKQR
 ISVQRESQSRTPRAGVSPKKAHPCEMGLILEDVFHFADHQETHHKQKLNRSAGCGKNLDDTAYLHQHQK
 QHIGEFYRKSVREASFVKKRKLRSQEPFVREFGKDVLPSSGLCQEA-AAVEKTDSETMHGPPFQEGKT
 NYSCGKRTKAFSTKHSVIPHQKLFTRDGCYVCSDCGKSF SRYVSFSNHQRDHTAKGPYDCGECGKSYSRK
 SSLIQHQRVHTGKTAYPCEECEGKSF S QKGSLSHQRVHTGERPYECREYKSFSGQKGNLIQHQQGHTGER
 AYHCGECGKSF RQKFCFINHQRVHTGERPYKCGECGKSF GQKGNLVQHQRGHTGERPYECKECGKSF RYR
 SHLTEHQRLHTGERPYNCRECGKLFNRKYHLLVHERVHTGERPYACEVCGKLFGNKNCVTIHQRIHTGER
 PYECNECGKSF LSSALHVHKRVHSGQKPYKCECGKSF AECSLLIKHRR IHTGERPYECTKCGKTFQRS
 STLLHHQSSHRRKAL

TRTRPLE - GFP Tag - V

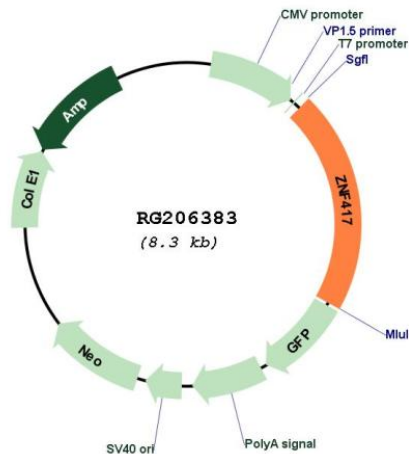
Restriction Sites: Sgfl-MluI

Cloning Scheme:

Cloning sites used for ORF Shutting:



Plasmid Map:



ACCN: NM_152475

ORF Size: 1725 bp

OTI Disclaimer: The molecular sequence of this clone aligns with the gene accession number as a point of reference only. However, individual transcript sequences of the same gene can differ through naturally occurring variations (e.g. polymorphisms), each with its own valid existence. This clone is substantially in agreement with the reference, but a complete review of all prevailing variants is recommended prior to use. [More info](#)

OTI Annotation: This clone was engineered to express the complete ORF with an expression tag. Expression varies depending on the nature of the gene.

Components: The ORF clone is ion-exchange column purified and shipped in a 2D barcoded Matrix tube containing 10ug of transfection-ready, dried plasmid DNA (reconstitute with 100 ul of water).

Reconstitution Method:

1. Centrifuge at 5,000xg for 5min.
2. Carefully open the tube and add 100ul of sterile water to dissolve the DNA.
3. Close the tube and incubate for 10 minutes at room temperature.
4. Briefly vortex the tube and then do a quick spin (less than 5000xg) to concentrate the liquid at the bottom.
5. Store the suspended plasmid at -20°C. The DNA is stable for at least one year from date of shipping when stored at -20°C.

RefSeq: [NM_152475.2](#), [NP_689688.2](#)
RefSeq Size: 4685 bp
RefSeq ORF: 1728 bp
Locus ID: 147687
UniProt ID: [Q8TAU3](#)
Cytogenetics: 19q13.43
Domains: KRAB, zf-C2H2
Protein Families: Transcription Factors
Gene Summary: May be involved in transcriptional regulation.[UniProtKB/Swiss-Prot Function]