

## Product datasheet for **RG206377**

### PDGF Receptor beta (PDGFRB) (NM\_002609) Human Tagged ORF Clone

#### Product data:

Product Type:	Expression Plasmids
Product Name:	PDGF Receptor beta (PDGFRB) (NM_002609) Human Tagged ORF Clone
Tag:	TurboGFP
Symbol:	PDGF Receptor beta
Synonyms:	CD140B; IBGC4; IMF1; JTK12; KOGS; PDGFR; PDGFR-1; PDGFR1; PENTT
Mammalian Cell Selection:	Neomycin
Vector:	pCMV6-AC-GFP (PS100010)
E. coli Selection:	Ampicillin (100 ug/mL)
ORF Nucleotide Sequence:	>RG206377 representing NM_002609 Red=Cloning site Blue=ORF Green=Tags(s)

TTTTGTAATACGACTCACTATAGGGCGGCCGGAATTCGTCGACTGGATCCGGTACCGAGGAGATCTGCCGCC**CGATCGCC**

ATGCGGCTCCGGGTGCGATGCCAGCTCTGGCCCTCAAAGGCGAGCTGCTGTTGCTGTCTCTCTCTGTTAC  
TTCTGGAACACAGATCTCTCAGGGCCTGGTCGTCACACCCCGGGGCCAGAGCTTGCTCAATGTCTC  
CAGCACCTTCGTTCTGACCTGCTCGGGTTCAGTCCGGTGGTGTGGGAACGGATGTCCAGGAGCCCCA  
CAGGAAATGGCCAAGGCCAGGATGGCACCTTCTCCAGCGTGCTCACACTGACCAACCTCACTGGGCTAG  
ACACGGGAGAATACTTTTGCACCACAATGACTCCCGTGGACTGGAGACCGATGAGCGGAAACGGCTCTA  
CATCTTTGTGCCAGATCCACCGTGGGCTTCTCCCTAATGATGCCGAGGAACTATTCATCTTTCTCAGG  
GAAATAACTGAGATCACCATTCATGCCGAGTAACAGACCCACAGCTGGTGGTGACTGCACGAGAAGA  
AAGGGGACGTTGCACTGCCTGTCCCTATGATACCAACGTGGCTTTTTGGTATCTTTGAGGACAGAAG  
CTACATCTGAAAACACCATTGGGGACAGGGAGGTGGATTCTGATGCCTACTATGTCTACAGACTCCAG  
GTGTCATCCATCAACGTCTCTGTGAACGCAGTGCAGACTGTGGTCCGCCAGGGTGAACATCACCTCA  
TGTGCATTGTGATCGGGAATGAGGTGGTCAACTTCGAGTGGACATACCCCGCAAAGAAAGTGGGCGGCT  
GGTGGAGCCGGTACTGACTTCTCTTTGGATATGCCTTACCACATCCGCTCCATCCTGCACATCCCCAGT  
GCCGATTAGAAGACTCGGGGACCTACACCTGCAATGTGACGGAGAGTGAATGACCATCAGGATGAAA  
AGGCCATCAACATCACCGTGGTTGAGAGCGGCTACGTGCCGCTCCTGGGAGAGGTGGGCACACTACAATT  
TGCTGAGCTGCATCGGAGCCGGACACTGCAGGTAGTGTTCGAGGCCTACCCACCGCCCACTGTCTGTGG  
TTCAAAGACAACCGCACCTGGGCGACTCCAGCGCTGGCGAAATCGCCCTGTCCACGCGCAACGTGTCGG  
AGACCCGGTATGTGTCAGAGCTGACACTGGTTCGCGTGAAGGTGGCAGAGGCTGGCCACTACACCATGCG  
GGCCTTCCATGAGGATGCTGAGGTCCAGCTCTCCTTCCAGCTACAGATCAATGTCCCTGTCCGAGTGCTG  
GAGCTAAGTGAGAGCCACCCTGACAGTGGGGAACAGACAGTCCGCTGTCGTGGCCGGGCATGCCCCAGC  
CGAACATCATCTGGTCTGCCTGCAGAGACTCAAAGGTGTCCAGTGAGCTGCCGCCACGCTGCTGGG  
GAACAGTTCGGAAGAGGAGCCAGCTGGAGACTAACGTGACGTACTGGGAGGAGGAGCAGGAGTTGAG



[View online >](#)

GTGGTGAGCACACTGCGTCTGCAGCACGTGGATCGGCCACTGTCCGTGCGCTGCACGCTGCGCAACGCTG  
 TGGGCCAGGACACGCAGGAGGTTCATCGTGGTGCCACACTCCTTGCCTTTAAGGTGGTGGTATCTCAGC  
 CATCTGGCCCTGGTGGTGTCTACCATCATCTCCCTTATCATCTCATATGCTTTGGCAGAAGAAGCCA  
 CGTTACGAGATCCGATGGAAGGTGATTGAGTCTGTGAGCTCTGACGGCCATGAGTACATCTACGTGGACC  
 CCATGCAGCTGCCATGACTCCACGTGGGAGCTGCCCGGGACCAGCTTGTGCTGGGACGCACCCTCGG  
 CTCTGGGGCCTTTGGGCAGGTGGTGGAGGCCACGGCTCATGGCCTGAGCCATTCTCAGGCCACGATGAAA  
 GTGGCCGTC AAGATGCTTAAATCCACAGCCCGCAGCAGTGAGAAGCAAGCCCTTATGTCGGAGCTGAAGA  
 TCATGAGTCACCTTGGGCCACCTGAACGTGGTCAACCTGTTGGGGCCCTGCACCAAAGGAGGCCAT  
 CTATATCATCACTGAGTACTGCCCTACGGAGACCTGGTGGACTACCTGCACCGCAACAAACACACCTTC  
 CTGCAGCACCCTCCGACAAGCGCCGCCAGCGCGGAGCTTACAGCAATGCTCTGCCGTTGGGC  
 TCCCCCTGCCAGCCATGTGCTTGGCCGGGAGAGCGACGGTGGCTACATGGACATGAGCAAGGACGA  
 GTGGTGGACTATGTGCCATGCTGGACATGAAAGGAGACGTCAAATATGCAGACATCGAGTCTCCAAC  
 TACATGGCCCTTACGATAACTACGTCCCTCTGCCCTGAGAGGACCTGCCGAGCAACTTGTATCAACG  
 AGTCTCCAGTGCTAAGCTACATGGACCTCGTGGGCTTACGCTACCAGGTGGCCAATGGCATGGAGTTTCT  
 GGCTCCAAGAAGTGCCTCCACAGAGACCTGGCGCTAGGAACGTGCTCATCTGTGAAGGAAGCTGGTC  
 AAGATCTGTGACTTTGGCCTGGCTCGAGACATCATGCGGGACTCGAATTACATCTCCAAAGGCAGACCT  
 TTTTGCCTTTAAAGTGGATGGCTCCGGAGAGCATCTTCAACAGCCTTACACCACCTGAGCGACGTGTG  
 GTCCTTGGGATCCTGCTCTGGGAGATCTTACCTTGGGTGGCACCCCTTACCCAGAGCTGCCATGAAC  
 GAGCAGTTCTACAATGCCATCAAACGGGTTACCCGATGGCCAGCCTGCCATGCCTCCGACGAGATCT  
 ATGAGATCATGCAGAAGTGTGGGAAGAGAAGTTTGGATTGGCCCCCTTCTCCAGCTGGTGTGCT  
 TCTCGAGAGACTGTTGGGCGAAGGTTACAAAAGAAGTACCAGCAGGTGGATGAGGAGTTTCTGAGGAGT  
 GACCACCAGCCATCCTTCGGTCCAGGCCCGCTTGCCTGGGTTCCATGGCCTCCGATCTCCCCTGGACA  
 CCAGCTCCGCTCTATACTGCCGTGCAGCCCAATGAGGGTGACAACGACTATATCATCCCCTCCCTGA  
 CCCAAAACCCGAGGTTGCTGACGAGGGCCCACTGGAGGGTTCCCCAGCCTAGCCAGCTCCACCCGTAAT  
 GAAGTCAACACCTCCTCAACATCTCTGTGACAGCCCCCTGGAGCCCCAGGACGAACCAGAGCCAGAGC  
 CCCAGCTTGTGACTCCAGGTGGAGCCGGAGCCAGAGCTGGAACAGTTGCCGGATTCGGGGTCCCTGCGCC  
 TCGGGCGGAAGCAGAGGATAGCTTCTG

ACGCGTACGCGGCCGCTCGAG - GFP Tag - GTTTAA

**Protein Sequence:**

>RG206377 representing NM\_002609  
 Red=Cloning site Green=Tags(s)

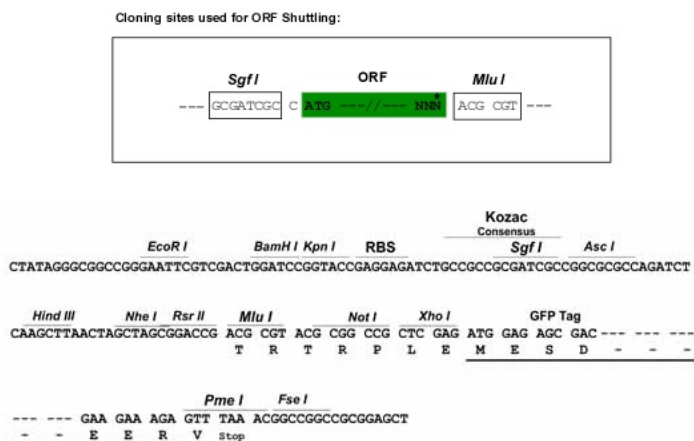
MRLPGAMPALALKGELLLL SLLLLLEPQISQGLVVTTPGPELVLNVSSTFVLTCSGSAPVWERMSEQEP  
 QEMAKAQDGT FSSVLTNL TGLDTGEYFCTHNSRGLTDERKRLYIFVPDPTVGFLPNDAEELIFL  
 EITEITIPCRVTD PQLVVTLEHKKGDVALPVPYDHQGRFFGIFEDRSYICKTTIGDREVDSDAYVYR  
 LQVSSINVSNAVQTVVRQGENITLMCIVIGNEVNFWEYTPRKESGRLVEPVDFLLDMPYHIRSILHIPS  
 AELEDSTYTCNVTE SVNDHQDEKAINITVVESGYVRLLEGEVGLQFAELHRSRTLQVVFAYPPPTVLW  
 FKDNRTLGDSSAGEIALSTRNVSETRYVSELTLVRVKVAEAGHYTMRAFHEDA EVQLSFQLQINVPVRV  
 LELSESHPD SGEQTVRCRGRGMPQNI IWSACRDLKRCPRELPPTLLGNSSEESQLETNVTYWEEQEF  
 EYVSTLRLQHVD RPLSVRCTLRNAVGQDTQEVIVPHSLPFKVVVISAIALVVLTIISLIIILIMLWQK  
 KPRYERIRWKVIESVSSDGHEIYVDPMQLPYDSTWELPRDQLVLRGTLGSGAFGQVVEATAHGLSHSQA  
 TMKVAVKMLKSTAR SSEQALMSELKIMSHLGPLN VVNLGACTKGGPIYIIITEYCRYGDLVDYLHRN  
 KHTFLQHHS DKRRPPSAELYSNALPVGLPLPSHVSLTGESDGGYMDMSKDESVDYVPM LDMKGDV  
 KYADIESSNYMAPYDNYVPSAPERTCRATLINE SPVLSYMDLVGFSYQVANGMEFLASKNCVHRDLA  
 AARNVLICEGKLVKICDFGLARDIMRDSNYISKGSTFLPLKWMAPESIFNSLYTTLSDVW SFGILLWEI  
 FTLGGTPYPELPMNEQFYNAIKRGYRMAQPAHASDEIYEIMQKWE EKFEIRPPFSQLVLLLERLLGEGY  
 KKKYQQVDEEF LRS DHPAILRSQARLPGFHGLRSPLDTSVLYTAVQPNEGDN DYIIPLPDPKPEVA  
 DEGLEGSPSLASSTLNEVNTSSTISCDSPLEPQDEPEPEPQLELQVEPEPELEQLPDSGCPAPRAEA  
 EDSFL

TRTRPLE - GFP Tag - V

**Restriction Sites:**

Sgfl-MluI

Cloning Scheme:



ACCN: NM\_002609

ORF Size: 3318 bp

OTI Disclaimer: Due to the inherent nature of this plasmid, standard methods to replicate additional amounts of DNA in E. coli are highly likely to result in mutations and/or rearrangements. Therefore, OriGene does not guarantee the capability to replicate this plasmid DNA. Additional amounts of DNA can be purchased from OriGene with batch-specific, full-sequence verification at a reduced cost. Please contact our customer care team at [custsupport@origene.com](mailto:custsupport@origene.com) or by calling 301.340.3188 option 3 for pricing and delivery.

The molecular sequence of this clone aligns with the gene accession number as a point of reference only. However, individual transcript sequences of the same gene can differ through naturally occurring variations (e.g. polymorphisms), each with its own valid existence. This clone is substantially in agreement with the reference, but a complete review of all prevailing variants is recommended prior to use. [More info](#)

OTI Annotation: This clone was engineered to express the complete ORF with an expression tag. Expression varies depending on the nature of the gene.

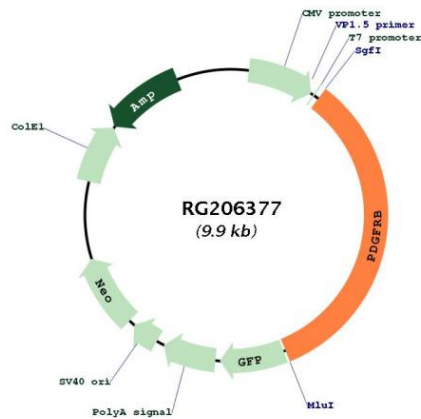
Components: The ORF clone is ion-exchange column purified and shipped in a 2D barcoded Matrix tube containing 10ug of transfection-ready, dried plasmid DNA (reconstitute with 100 ul of water).

Reconstitution Method:

1. Centrifuge at 5,000xg for 5min.
2. Carefully open the tube and add 100ul of sterile water to dissolve the DNA.
3. Close the tube and incubate for 10 minutes at room temperature.
4. Briefly vortex the tube and then do a quick spin (less than 5000xg) to concentrate the liquid at the bottom.
5. Store the suspended plasmid at -20°C. The DNA is stable for at least one year from date of shipping when stored at -20°C.

RefSeq:	<a href="#">NM_002609.3, NP_002600.1</a>
RefSeq Size:	5718 bp
RefSeq ORF:	3321 bp
Locus ID:	5159
UniProt ID:	<a href="#">P09619</a>
Cytogenetics:	5q32
Domains:	pkinase, TyrKc, S_TKc, ig, IGc2, IG
Protein Families:	Druggable Genome, ES Cell Differentiation/IPS, Protein Kinase, Transmembrane
Protein Pathways:	Calcium signaling pathway, Colorectal cancer, Cytokine-cytokine receptor interaction, Focal adhesion, Gap junction, Glioma, MAPK signaling pathway, Melanoma, Pathways in cancer, Prostate cancer, Regulation of actin cytoskeleton
Gene Summary:	The protein encoded by this gene is a cell surface tyrosine kinase receptor for members of the platelet-derived growth factor family. These growth factors are mitogens for cells of mesenchymal origin. The identity of the growth factor bound to a receptor monomer determines whether the functional receptor is a homodimer (PDGFB or PDGFD) or a heterodimer (PDGFA and PDGFB). This gene is essential for normal development of the cardiovascular system and aids in rearrangement of the actin cytoskeleton. This gene is flanked on chromosome 5 by the genes for granulocyte-macrophage colony-stimulating factor and macrophage-colony stimulating factor receptor; all three genes may be implicated in the 5-q syndrome. A translocation between chromosomes 5 and 12, that fuses this gene to that of the ETV6 gene, results in chronic myeloproliferative disorder with eosinophilia. [provided by RefSeq, Aug 2017]

### Product images:



Circular map for RG206377