

## Product datasheet for **RG206368**

### **RNF182 (NM\_152737) Human Tagged ORF Clone**

#### Product data:

**Product Type:** Expression Plasmids  
**Product Name:** RNF182 (NM\_152737) Human Tagged ORF Clone  
**Tag:** TurboGFP  
**Symbol:** RNF182  
**Mammalian Cell Selection:** Neomycin  
**Vector:** pCMV6-AC-GFP (PS100010)  
**E. coli Selection:** Ampicillin (100 ug/mL)  
**ORF Nucleotide Sequence:** >RG206368 representing NM\_152737  
Red=Cloning site Blue=ORF Green=Tags(s)

TTTTGTAATACGACTCACTATAGGGCGGCCGGAATTCGTCGACTGGATCCGGTACCGAGGAGATCTGCC  
GCC**CGATCGCC**

ATGGCCAGTCAACCTCCTGAAGACACTGCGGAGTCTCAGGCCTCTGATGAGCTGGAGTGCAAAATCTGTT  
ACAATCGATAACAATCTGAAACAGAGGAAACCCAAAGTCTGGAGTGTTCATAGGGTTTGCCAAATG  
CCTCTACAAGATCATAGACTTTGGGGACTCCCCACAAGGTGTCTTGTCTGTCTTTCTGCAGGTTTGAG  
ACGTGCCTGCCAGATGATGAAGTTAGTAGCCTGCCGATGACAACAACATCCTTGAAACTTGACTGTG  
GAGGCAAAGGGAAGAAGTGCCTGCCAGAGAACCCTACTGAGCTGCTCACCCCAAGAGGCTGGCCTC  
TCTGGTCACTCCTTCTCACAGTCTCCAACCTGCCTGGTACATAACCATCATGGAGGTGCAGAGAGAGAGC  
TCCCCGTCCCTGAGCTCCACTCCTGTGGTAGAATTTTATAGGCCTGCGAGTTTCGACTCTGTCACCACTG  
TGTACACAACCTGGACTGTGTGGAAGTGCACGTCCCTGCTGTTTCAGACATCCATCCGGGTGTTAGTGTG  
GTTGCTAGGTTTGTCTACTTCAGCTCCTTACCCTTAGGAATCTACTTACTGGTGTCTAAGAAAGTCACC  
CTTGGGGTCTCTTTGTCAGCCTGGTCCCTTCGAGCCTCGTTATTCTTATGGTGTATGGTTTTTGCCAGT  
GTGTTTGCATGAATTTCTAGACTGTATGGCACCTCCTTCT

**ACGCGTACGCGGCCGCTCGAG** - GFP Tag - GTTTAA

**Protein Sequence:** >RG206368 representing NM\_152737  
Red=Cloning site Green=Tags(s)

MASQPPEDTAESQASDELECKICYNRYNLKQRKPKVLECCHRVCAKLYKIIDFGDSPQGVIVCPFCRFE  
TCLPDDEVSSLPDDNNILVNLTCGGKGGKCLPENPTLLLLTPKRLASLVSPSHTSSNCLVITIMEVQRES  
SPSLSSTPVVEFYRPASFDVSTTVSHNWTVWNCTSLLFQTIRVWLLGLLYFSSLPLGIYLLVSKKVT  
LGVVVFVSLVPSLVILMVGFCQVCHEFLDCMAPPSS

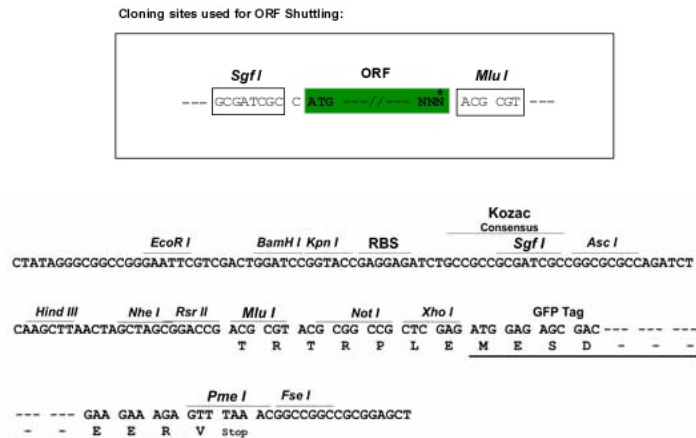
**TRTRPLE** - GFP Tag - V



[View online »](#)

**Restriction Sites:** SgfI-MluI

**Cloning Scheme:**



**ACCN:** NM\_152737

**ORF Size:** 741 bp

**OTI Disclaimer:** The molecular sequence of this clone aligns with the gene accession number as a point of reference only. However, individual transcript sequences of the same gene can differ through naturally occurring variations (e.g. polymorphisms), each with its own valid existence. This clone is substantially in agreement with the reference, but a complete review of all prevailing variants is recommended prior to use. [More info](#)

**OTI Annotation:** This clone was engineered to express the complete ORF with an expression tag. Expression varies depending on the nature of the gene.

**Components:** The ORF clone is ion-exchange column purified and shipped in a 2D barcoded Matrix tube containing 10ug of transfection-ready, dried plasmid DNA (reconstitute with 100 ul of water).

**Reconstitution Method:**

1. Centrifuge at 5,000xg for 5min.
2. Carefully open the tube and add 100ul of sterile water to dissolve the DNA.
3. Close the tube and incubate for 10 minutes at room temperature.
4. Briefly vortex the tube and then do a quick spin (less than 5000xg) to concentrate the liquid at the bottom.
5. Store the suspended plasmid at -20°C. The DNA is stable for at least one year from date of shipping when stored at -20°C.

**RefSeq:** [NM\\_152737.4](#)

**RefSeq Size:** 3322 bp

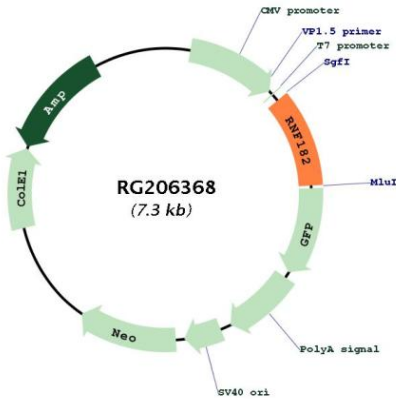
**RefSeq ORF:** 744 bp

**Locus ID:** 221687

**UniProt ID:** [Q8N6D2](#)

**Cytogenetics:** 6p23  
**Domains:** RING  
**Protein Families:** Druggable Genome, Transmembrane  
**Gene Summary:** E3 ubiquitin-protein ligase that mediates the ubiquitination of ATP6V0C and targets it to degradation via the ubiquitin-proteasome pathway.[UniProtKB/Swiss-Prot Function]

**Product images:**



Circular map for RG206368