

Product datasheet for **RG206351**

C11orf65 (NM_152587) Human Tagged ORF Clone

Product data:

Product Type:	Expression Plasmids
Product Name:	C11orf65 (NM_152587) Human Tagged ORF Clone
Tag:	TurboGFP
Symbol:	C11orf65
Synonyms:	MFI
Mammalian Cell Selection:	Neomycin
Vector:	pCMV6-AC-GFP (PS100010)
E. coli Selection:	Ampicillin (100 ug/mL)
ORF Nucleotide Sequence:	>RG206351 representing NM_152587 Red=Cloning site Blue=ORF Green=Tags(s)

TTTTGTAATACGACTCACTATAGGGCGGCCGGAATTCGTCGACTGGATCCGGTACCGAGGAGATCTGCC
GCC**CGATCGCC**

ATGCCTTGAAAGAGGAATCAGAATTTACAAAGCAGGATAAGGCTGCCAGAGTCATTAGCAGGCCTGGA
AAAGTTTCCTTAATGTCGCTATATTTCAACACTTTAAAAGTCTGATTGATTTAAGAAGACAAGGAGAACC
ACGTCAGATAGTAAATATATTAATCCCAAAGAGGCAGAGCTTCTAGATGCTGCTGCTGGCATTATGTG
CGATTAGATTAGGTGGAGTAAATTTCCACCTGATATATACTATAAGATTTTTACTCACAGACCTATTG
AAGATCTCTGTGCTAACAGCCCTAGAAATTATGCAAACTCCAGCAAAGCATACTCATAATAAAAA
TGATCATCTTCAGGAAGAGGATCATAGTGGCTGGTATCATCGTATAGAAAACAATGGCTGGAGGCCAGTT
TCTGATACATTTTGGCTATCTACTGATGGTATGGTGGTGGAAAGACAAAAAGGAAAGTGAATTCATTCT
CTAAACTGAAGAGAAGGCAAGATTTGAAAAAGAAAAGAACTTAGAAAAATAGAGTGGATGAGGCAAAAT
GTACTACTCAGGAAGTCTGGAGGCTAAGTCAACACATCATGAACTCTAGGACTAATTCACACTGCAACA
AAGGGCTGATTAGAGCTTTGAAGATGGGGGATAGATTCTGTGATGGAATGGGAAGTGGATGAAGTGC
TGAAGTGGACAAATACACTGAACTTTGATGAGTACATTGCCAGCTGGAAGGAAATGCTACAAGCAACTC
TTCGGCTAACTTCAAAGGATTCAGGTTTAAATCAAGCACAGAAAAACATATATAACTATGGAGGAGACATA
TCAAAGATGCAAATGGGAATACCAGATGATACTTACTATGAAAATGTTTATCAAGAACCAAATGTAAC
GATTAACGCCTGATTCTACTTATGGACTA

ACGCGTACGCGGCCGCTCGAG - GFP Tag - GTTTAA



[View online »](#)

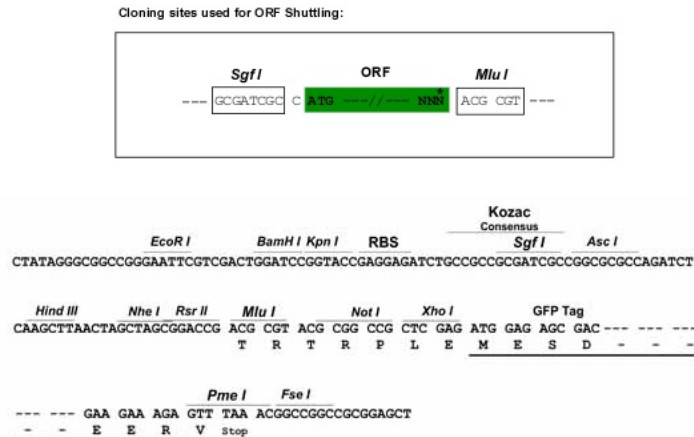
Protein Sequence: >RG206351 representing NM_152587
 Red=Cloning site Green=Tags(s)

```
MPWKEESEFTKQDKAARVIQQAWKSFLNVAIFQHFKSLIDLRRQGEPRQIVKYINPKEAELLDAAAGIHV
RFRLGGVKFPPDIYYKIFTHRPIDLCANSPRNYAKLPKHTSHNKNDHLQEEDHSGWYHRIENNGWRPV
SDTFWLSTDGMVVEDKKESEFHF SKLKRQDLEKKRKLKRIEWMRQMYYSGSLEAKSTHHTLGLIHTAT
KGLIRAFEDGGIDSVMWEVDEVLNWTNTLNFDEYIASWKEIATSNSSANFKGFRFNQAQKNIYNYGGDI
SKMQMGIPDDTYENVYQEPNVTRLTPDSTYGL
```

TRTRPLE - GFP Tag - V

Restriction Sites: SgfI-MluI

Cloning Scheme:



ACCN: NM_152587

ORF Size: 939 bp

OTI Disclaimer: The molecular sequence of this clone aligns with the gene accession number as a point of reference only. However, individual transcript sequences of the same gene can differ through naturally occurring variations (e.g. polymorphisms), each with its own valid existence. This clone is substantially in agreement with the reference, but a complete review of all prevailing variants is recommended prior to use. [More info](#)

OTI Annotation: This clone was engineered to express the complete ORF with an expression tag. Expression varies depending on the nature of the gene.

Components: The ORF clone is ion-exchange column purified and shipped in a 2D barcoded Matrix tube containing 10ug of transfection-ready, dried plasmid DNA (reconstitute with 100 ul of water).

Reconstitution Method:

1. Centrifuge at 5,000xg for 5min.
2. Carefully open the tube and add 100ul of sterile water to dissolve the DNA.
3. Close the tube and incubate for 10 minutes at room temperature.
4. Briefly vortex the tube and then do a quick spin (less than 5000xg) to concentrate the liquid at the bottom.
5. Store the suspended plasmid at -20°C. The DNA is stable for at least one year from date of shipping when stored at -20°C.

RefSeq: [NM_152587.5](#)

RefSeq Size: 1033 bp

RefSeq ORF: 942 bp

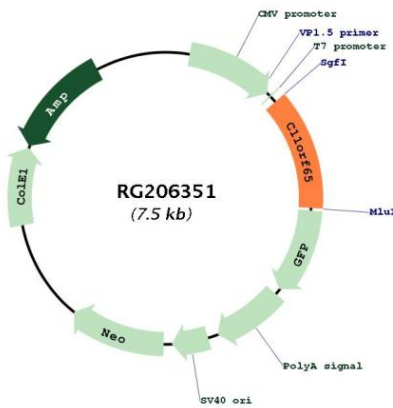
Locus ID: 160140

UniProt ID: [Q8NCR3](#)

Cytogenetics: 11q22.3

Gene Summary: Acts as an inhibitor of mitochondrial fission. Interacts with MFF and prevents DNM1L recruitment to mitochondria, promoting a more fused mitochondrial network. [UniProtKB/Swiss-Prot Function]

Product images:



Circular map for RG206351